

Crash Statistics for January 1, 2001 to December 31, 2005

Interstate 15/90 (I-15 Milepost 122.07 to 130.04, I-90 Milepost 227.46 to 230.31)

Interstate 115 (I-115 Milepost 0.00 to 1.37)

Table B1 - Interstate Mainline Crash Rates

	I-15/90*	I-115 *	Statewide Avg
All Vehicles			
Accidents per mile	39.1	13.9	N/A
All Vehicle Crash Rate	1.40	1.32	1.07 (1)
All Vehicle CR (2001)	1.91	N/A	1.03
All Vehicle CR (2002)	1.58	N/A	1.1
All Vehicle CR (2003)	1.41	N/A	1.15
All Vehicle CR (2004)	1.07	N/A	0.87
All Vehicle CR (2005)	1.36	N/A	N/A
All Vehicle Severity Index (2)	1.47	3.68	1.96 (1)
All Vehicle Severity Rate	2.06	4.85	2.08 (1)
Trucks			
Truck Crash Rate	0.93	N/A	N/A
Truck Severity Index (2)	1.42	N/A	N/A
Truck Severity Rate	1.32	N/A	N/A

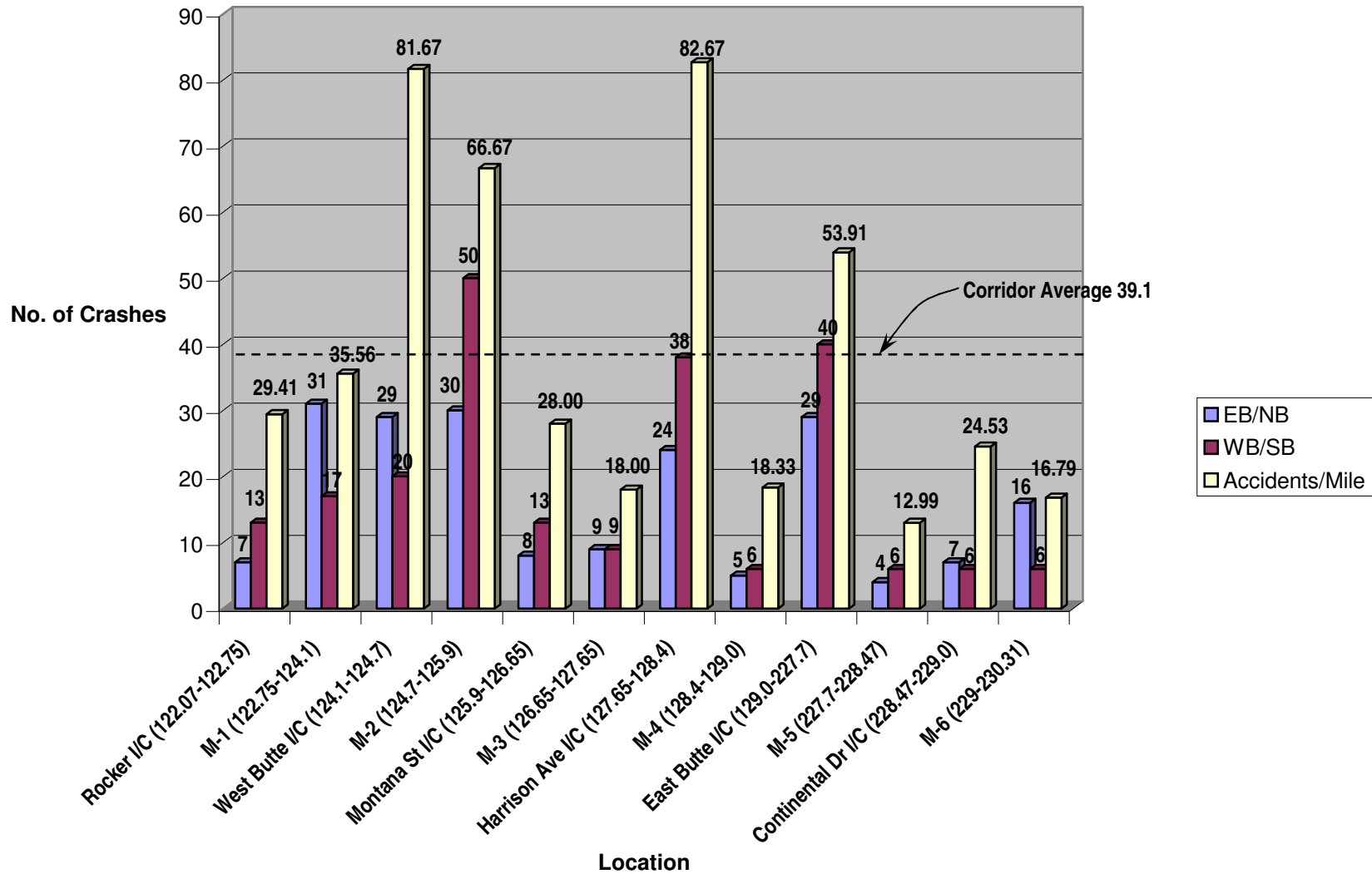
* Non Junction crashes only

Notes: (1) Rates are for 2000 to 2004. (2) Rating procedure for Severity Index assigns a value of 8 to fatalities and 3 to injuries

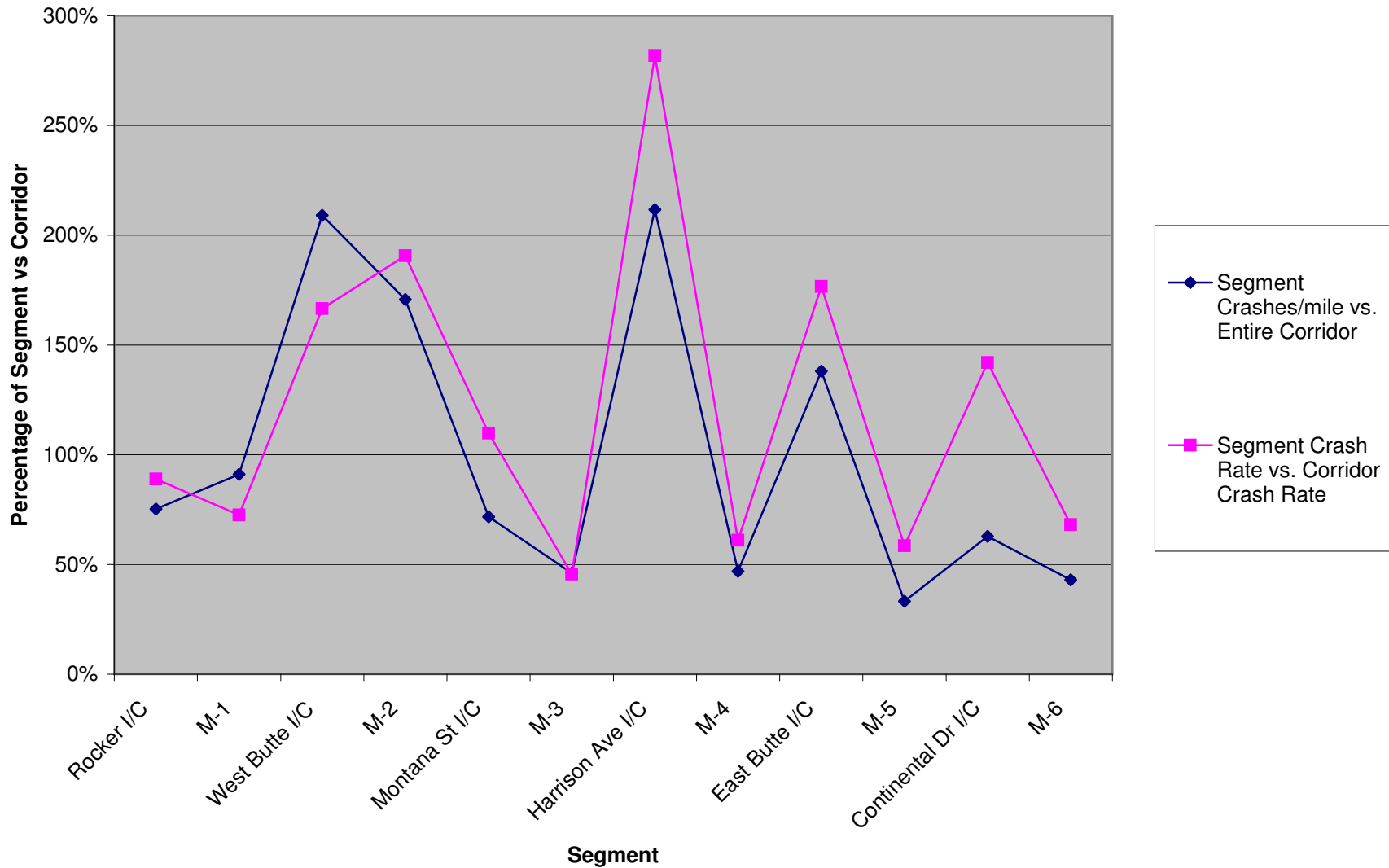
Table B2 - Interstate 15/90 Mainline by Segments

Segment	Crashes	Direction		Accidents/ Mile	Compared to Corridor avg (%)	Crash Rate	Compared to Corridor avg (%)	Length (miles)
		EB/NB	WB/SB					
Rocker I/C (122.07-122.75)	20	7	13	29.41	75%	1.25	89%	0.68
M-1 (122.75-124.1)	48	31	17	35.56	91%	1.02	73%	1.35
West Butte I/C (124.1-124.7)	49	29	20	81.67	209%	2.33	167%	0.60
M-2 (124.7-125.9)	80	30	50	66.67	171%	2.67	191%	1.20
Montana St I/C (125.9-126.65)	21	8	13	28.00	72%	1.54	110%	0.75
M-3 (126.65-127.65)	18	9	9	18.00	46%	0.64	46%	1.00
Harrison Ave I/C (127.65-128.4)	62	24	38	82.67	212%	3.95	282%	0.75
M-4 (128.4-129.0)	11	5	6	18.33	47%	0.86	61%	0.60
East Butte I/C (129.0-227.7)	69	29	40	53.91	138%	2.48	177%	1.28
M-5 (227.7-228.47)	10	4	6	12.99	33%	0.82	59%	0.77
Continental Dr I/C (228.47-229.0)	13	7	6	24.53	63%	1.99	142%	0.53
M-6 (229-230.31)	22	16	6	16.79	43%	0.96	68%	1.31

Graph B1 - I-90 Crash Location By Segment



Crash Analysis Comparisons



I-15/90 Mainline Segment Crash Statistics

Table B3 -Interstate 15/90 Mainline by Segments

Segment	Accidents	Injury Crashes	% of total Injury Crashes	Injury Crashes per mile
Rocker I/C (122.07-122.75)	20	9	7.8%	13.24
M-1 (122.75-124.1)	48	16	13.8%	11.85
West Butte I/C (124.1-124.7)	49	13	11.2%	21.67
M-2 (124.7-125.9)	80	18	15.5%	15.00
Montana St I/C (125.9-126.65)	21	11	9.5%	14.67
M-3 (126.65-127.65)	18	4	3.4%	4.00
Harrison Ave I/C (127.65-128.4)	62	23	19.8%	30.67
M-4 (128.4-129.0)	11	1	0.9%	1.67
East Butte I/C (129.0-227.7)	38	12	10.3%	17.14
M-5 (227.7-228.47)	10	1	0.9%	1.30
Continental Dr I/C (228.47-229.0)	13	3	2.6%	5.66
M-6 (229-230.31)	22	5	4.3%	3.82
Totals	392	116		

Table B3 (continued)

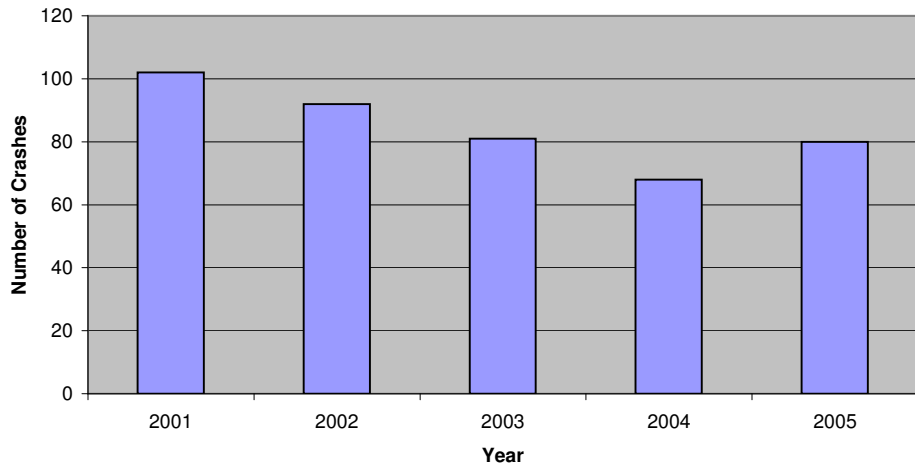
Segment	Day/Night		% of Night Crashes	Road Condition		% of Poor Road Condition Crashes
	Day	Night		Dry	Ice/Snow	
Rocker I/C (122.07-122.75)	13	7	35%	12	8	40%
M-1 (122.75-124.1)	22	26	54%	28	20	42%
West Butte I/C (124.1-124.7)	20	29	59%	17	32	65%
M-2 (124.7-125.9)	48	32	40%	15	64	80%
Montana St I/C (125.9-126.65)	14	7	33%	9	12	57%
M-3 (126.65-127.65)	13	5	28%	1	17	94%
Harrison Ave I/C (127.65-128.4)	48	14	23%	25	37	60%
M-4 (128.4-129.0)	7	4	36%	4	7	64%
East Butte I/C (129.0-227.7)	30	8	21%	13	25	66%
M-5 (227.7-228.47)	5	5	50%	6	4	40%
Continental Dr I/C (228.47-229.0)	6	7	54%	5	8	62%
M-6 (229-230.31)	9	13	59%	5	17	77%

Other Statistics:

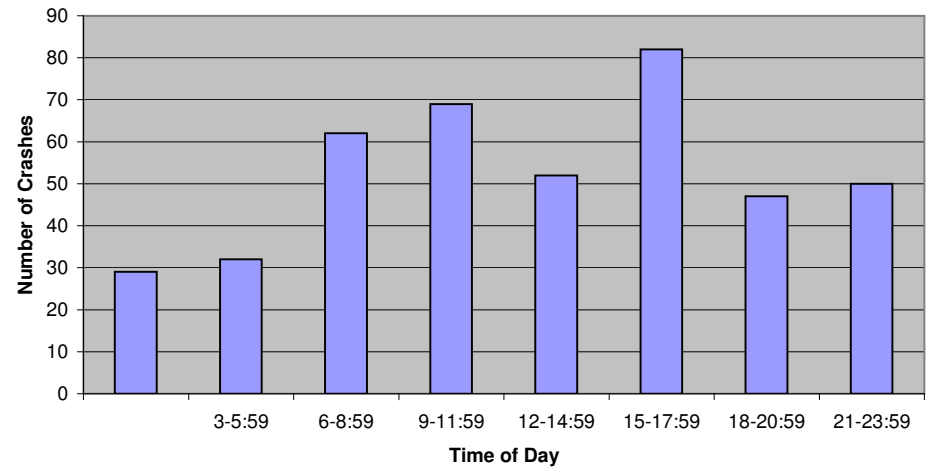
Segment M-2: 37% of crashes involve bridges

Segment East Butte: XX or 37% of crashes occurred on I-15 SB to I-90 EB loop ramp

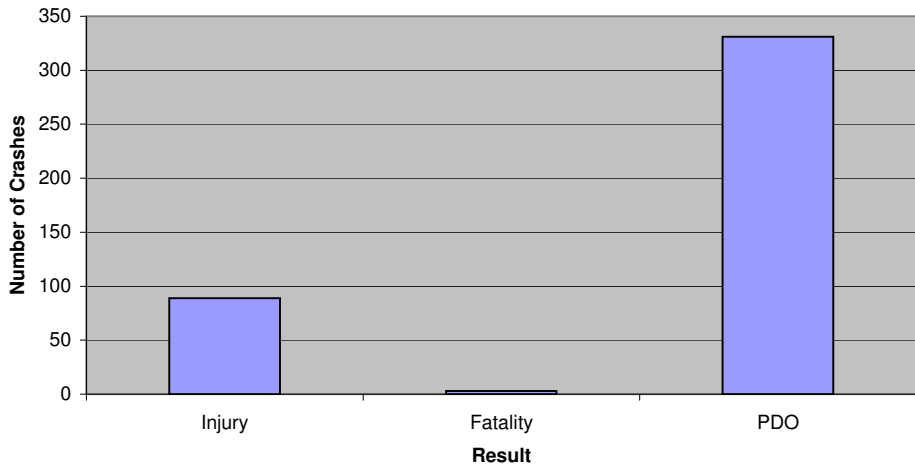
Crashes per Year



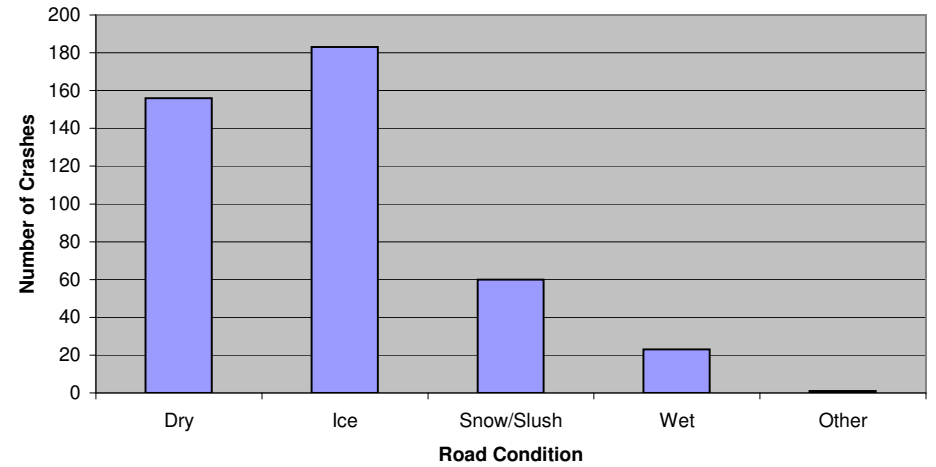
Time of Day



Crashes by Result



Road Condition



Crash Summaries for January 1, 2001 to December 31, 2005

Interstate 15/90 (I-15 Milepost 122.07 to 130.04, I-90 Milepost 227.46 to 230.31)

Interstate 115 (I-115 Milepost 0.00 to 1.37)

Table B4 -Total Accidents

Year	I-15/90		I-115	
	Number	Percentage	Number	Percentage
2001	102	0.24	4	0.21
2002	92	0.22	3	0.16
2003	81	0.19	3	0.16
2004	68	0.16	5	0.26
2005	80	0.19	4	0.21
Total	423		19	

Average = 84.6

3.8

Table B5 -Accident Types

Type	I-15/90		I-115	
	Number	Percentage	Number	Percentage
Injury	89	0.21	7	0.37
Fatality	3	0.01	1	0.05
PDO	331	0.78	11	0.58
Total	423		19	

Table B6 - Number of Vehicles

# of Vehicles	I-15/90		I-115	
	Number	Percentage	Number	Percentage
1	343	0.81	18	0.95
2	77	0.18	1	0.05
3 or 4	3	0.01	0	0.00
Total	423		19	

Table B7 - Direction of Travel

Direction	I-15/90		I-115	
	Number	Percentage	Number	Percentage
WB/SB	224	0.53	8	0.42
EB/NB	199	0.47	11	0.58
Total	423		19	

Table B8 - Time of Day

Time Range	I-15/90		I-115	
	Number	Percentage	Number	Percentage
	29	0.07	4	0.21
3-5:59	32	0.08	0	0.00
6-8:59	62	0.15	4	0.21
9-11:59	69	0.16	2	0.11
12-14:59	52	0.12	1	0.05
15-17:59	82	0.19	3	0.16
18-20:59	47	0.11	2	0.11
21-23:59	50	0.12	3	0.16
Total	423		19	

Table B9 -Days of the Week

Day	I-15/90		I-115	
	Number	Percentage	Number	Percentage
Sunday	63	0.15	4	0.21
Monday	64	0.15	4	0.21
Tuesday	38	0.09	1	0.05
Wednesday	58	0.14	2	0.11
Thursday	61	0.14	2	0.11
Friday	56	0.13	3	0.16
Saturday	83	0.20	3	0.16
Total	423		19	

Table B10 -Road Conditions

Condition	I-15/90		I-115	
	Number	Percentage	Number	Percentage
Dry	156	0.37	10	0.53
Ice	183	0.43	2	0.11
Snow/Slush	60	0.14	6	0.32
Wet	23	0.05	1	0.05
Other	1	0.00	0	0.00
Total	423		19	

Table B11 - Lighting Condition

Condition	I-15/90		I-115	
	Number	Percentage	Number	Percentage
Daylight	260	0.61	10	0.53
Dark not lit	119	0.28	8	0.42
Dark & lit	20	0.05	0	0.00
Dusk	14	0.03	0	0.00
Dawn	10	0.02	1	0.05
Total	423		19	

Table B12 - Driver Gender

Direction	I-15/90		I-115	
	Number	Percentage	Number	Percentage
Male	329	0.65	9	0.45
Female	163	0.32	11	0.55
Not Listed	13	0.03	0	0.00
Total	505		20	

Table B13 - Age of Driver

Age Range	I-15/90		I-115	
	Number	Percentage	Number	Percentage
18 & Under	43	0.09	4	0.20
19-25	112	0.22	4	0.20
26-30	49	0.10	2	0.10
31-35	28	0.06	2	0.10
36-40	40	0.08	2	0.10
41-45	38	0.08	1	0.05
46-50	40	0.08	1	0.05
51-55	36	0.07	1	0.05
56-60	38	0.08	2	0.10
61-65	29	0.06	1	0.05
66-70	12	0.02	0	0.00
over 70	26	0.05	0	0.00
Not Listed	14	0.03	0	0.00
Total	505		20	

Table B14 - Vehicle Type

Vehicle Type	I-15/90		I-115	
	Number	Percentage	Number	Percentage
Motorcycle	5	0.01	0	0.00
Passenger Car	443	0.88	20	1.00
Truck/Trailer	45	0.09	0	0.00
Other	12	0.02	0	0.00
Total	505		20	

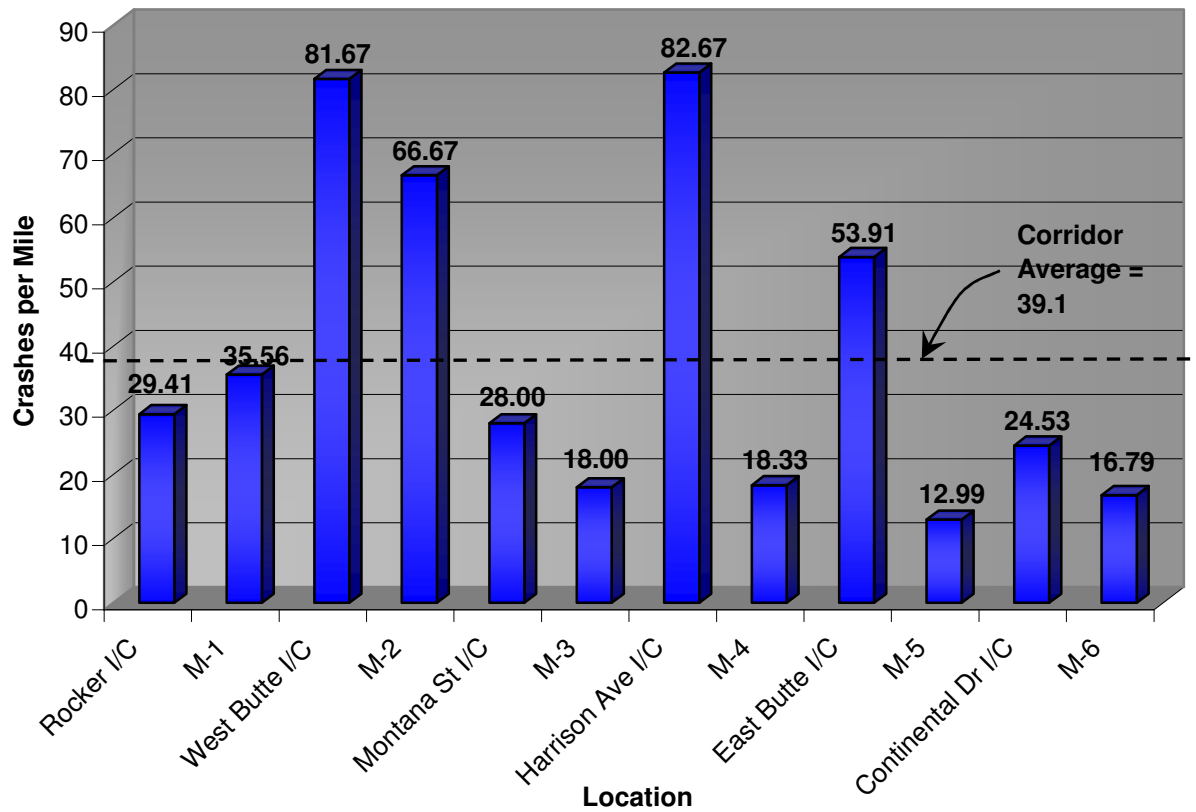
Table B15 - Junction Type

Vehicle Type	I-15/90		I-115	
	Number	Percentage	Number	Percentage
Non Junction	375	0.74	18	0.90
Interchange	13	0.03	0	0.00
Intersection Related	27	0.05	1	0.05
In Intersection	8	0.02	0	0.00
Total	423		19	

Table B16 - Contributing Factor

Factor	I-15/90		I-115	
	Number	Percentage	Number	Percentage
Alcohol	28	0.06	3	0.15
Careless Driving	30	0.06	2	0.10
Failed to Yield	6	0.01	0	0.00
Fell Asleep	13	0.03	0	0.00
Fog/Smoke/Smog	5	0.01	0	0.00
Followed too Closely	11	0.02	0	0.00
Improper Lane Change	8	0.02	0	0.00
Improper Passing	3	0.01	0	0.00
Icy	41	0.08	0	0.00
Inattentive Driving	31	0.06	4	0.20
Slushy	5	0.01	0	0.00
Rain/Snow	5	0.01	1	0.05
Blowing Sand/Soil	4	0.01	0	0.00
Too Fast For Conditions	187	0.37	6	0.30
Other (Vehicle)	6	0.01	0	0.00
Other (Driver)	8	0.02	2	0.10
Other	20	0.04	0	0.00
Not Listed	94	0.19	2	0.10
Total	505		20	

I-90 Crash Location By Segment



I-90 Crash Location By Segment

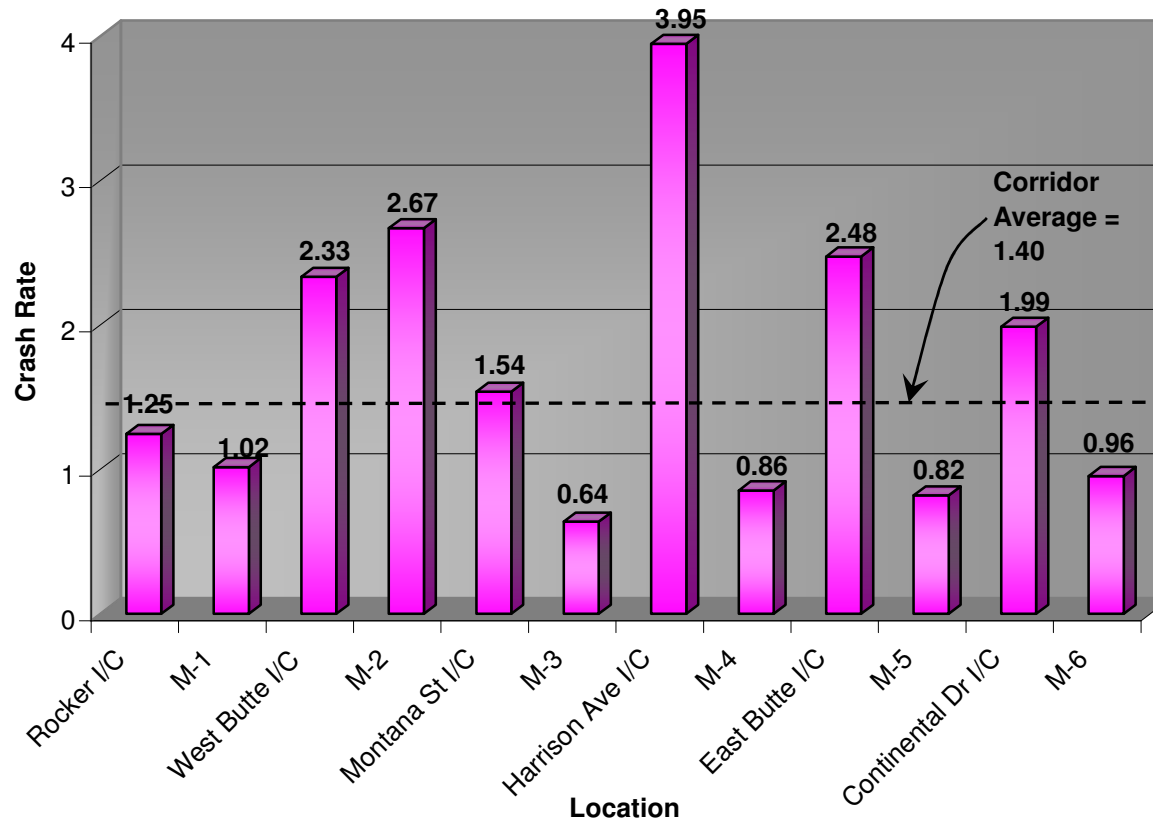


Table B20 - Intersection Crash Rates

Intersection	Crashes	Approach ADT	Crash Rate
		(Vehicles/day)	(million vehicles entering)
<i>Rocker Interchange</i>			
South Frontage Road	3	3895	0.53
Eastbound Ramps	6	4790	0.86
Westbound Ramps	6	5598	0.73
North Frontage Road	3	2391	0.86
<i>Montana Street Interchange</i>			
Rowe Road	13	14321	0.62
Eastbound Ramps (LaSalle)	14	17137	0.56
Westbound Ramps (DeSmet)	17	18369	0.63
<i>Harrison Avenue Interchange</i>			
Eastbound On/Off-Ramps/Sampson Ave	39	32675	0.82
Dewey Boulevard	58	37066	1.07
Eastbound Off-Ramp	9	17092	0.36
Westbound On/Off-Ramp	25	35402	0.48
Cornell Street	4	16270	0.17
Amherst Street	44	34077	0.88
<i>Continental Interchange</i>			
West Frontage Road (Continental Dr.)	4	4541	0.60
Westbound On/Off-Ramp	0	3117	0.00
Eastbound On/Off-Ramp	1	1976	0.35
East Frontage Road (Saddle Rock Dr.)	0	1226	0.00

Cross Road Intersection Crash Summaries

Table 21 - Rocker Interchange

South Frontage Road

Crash Type	Number	Percentage
Sideswipe - opposite direction	1	0.33
Sideswipe - same direction	0	0.00
Non Intersection	2	0.67
Total	3	1

Year	#
2001	1
2002	2
2003	0
2004	0
2005	0

Eastbound Ramps

Crash Type	Number	Percentage
Rear End	2	0.33
Right Angle	1	0.17
Sideswipe - same direction	1	0.17
Fixed Object	2	0.33
Total	6	1

Year	#
2001	2
2002	3
2003	1
2004	0
2005	0

Westbound Ramps

Crash Type	Number	Percentage
Rear End	2	0.33
Right Angle	1	0.17
Sideswipe - same direction	1	0.17
Fixed Object	2	0.33
Total	6	1

Year	#
2001	2
2002	1
2003	1
2004	0
2005	2

North Frontage Road

Crash Type	Number	Percentage
Fixed Object	1	0.33
Non Intersection	1	0.33
Other - Head on	1	0.33
Total	3	1

Year	#
2001	1
2002	1
2003	1
2004	0
2005	0

Table 22 - Montana Street Interchange**Rowe Road**

Crash Type	Number	Percentage
Rear End	6	0.46
Right Angle	5	0.38
Fixed Object	1	0.08
Other	1	0.08
Total	13	1

Year	#
2001	4
2002	3
2003	1
2004	3
2005	2

Eastbound Ramps

Crash Type	Number	Percentage
Rear End	1	0.07
Right Angle	8	0.57
Sideswipe - same direction	2	0.14
Fixed Object	1	0.07
Non Intersection	2	0.14
Total	14	1

Year	#
2001	0
2002	2
2003	7
2004	3
2005	2

Westbound Ramps

Crash Type	Number	Percentage
Rear End	5	0.29
Right Angle	8	0.47
Sideswipe - same direction	3	0.18
Non Intersection	1	0.06
Total	17	1

Year	#
2001	1
2002	3
2003	6
2004	4
2005	3

Table 23 - Harrison Street Interchange**Eastbound On Ramp/EB off-ramp (B)/Sampson**

Crash Type	Number	Percentage
Rear End	10	0.26
Right Angle	8	0.21
Sideswipe - same direction	21	0.54
Total	39	1

Year	#
2001	4
2002	8
2003	12
2004	3
2005	12

Dewey Blvd.

Crash Type	Number	Percentage
Rear End	19	0.33
Right Angle	25	0.43
Sideswipe - same direction	10	0.17
Fixed Object	3	0.05
Other - Pedestrian	1	0.02
Total	58	1

Year	#
2001	12
2002	9
2003	14
2004	9
2005	14

Eastbound Off Ramp (A)

Crash Type	Number	Percentage
Rear End	3	0.33
Right Angle	4	0.44
Sideswipe - same direction	2	0.22
Total	9	1

Year	#
2001	3
2002	2
2003	1
2004	0
2005	3

Wetbound On/Off Ramps

Crash Type	Number	Percentage
Rear End	17	0.68
Right Angle	1	0.04
Sideswipe - same direction	6	0.24
Fixed Object	1	0.04
Total	25	1

Year	#
2001	6
2002	4
2003	5
2004	5
2005	5

Cornell Street

Crash Type	Number	Percentage
Rear End	2	0.50
Sideswipe - same direction	2	0.50
Fixed Object	0	0.00
Total	4	1

Year	#
2001	1
2002	1
2003	0
2004	1
2005	1

Amherst Street

Crash Type	Number	Percentage
Rear End	28	0.64
Right Angle	11	0.25
Sideswipe - same direction	4	0.09
Fixed Object	1	0.02
Total	44	1

Year	#
2001	12
2002	8
2003	7
2004	9
2005	8

Table 24 - Continental Interchange

West Frontage Road

Crash Type	Number	Percentage
Rear End	1	0.25
Right Angle	2	0.50
Fixed Object	1	0.25
Total	4	1

Year	#
2001	1
2002	1
2003	0
2004	1
2005	1

Eastbound Ramps

Crash Type	Number	Percentage
Fixed Object	1	1.00
Total	1	1

Year	#
2001	0
2002	0
2003	1
2004	0
2005	0

Westbound Ramps

Crash Type	Number	Percentage
Total	0	

Year	#
2001	0
2002	0
2003	0
2004	0
2005	0

East Frontage Road

Crash Type	Number	Percentage
Total	0	

Year	#
2001	0
2002	0
2003	0
2004	0
2005	0