



Public Meeting

**Discuss the Butte Interstate Study
Wednesday, September 17, 2008**

**Open House: 5 - 7 p.m. Presentation: 5:30 p.m.
Lobby - Butte Civic Center
1314 Harrison Avenue, Butte**

The Montana Department of Transportation will discuss the I-15/I-90 and I-115 interstate systems and interchanges near and within the Butte urban limits. The purpose of the meeting is to review the study process and potential improvement options developed for the interstate system (I-15/I-90 and I-115) including the Rocker, W. Butte, Excelsior Ave., Montana St., Harrison Ave., E. Butte and Continental Dr. interchanges.

The meeting is open to the public and will be recorded. MDT attempts to provide accommodations for any known disability that may interfere with a person's participation in any department service, program or activity. For reasonable accommodations to participate in this meeting, please contact Paul Grant at (406) 444-9415 at least two days before the meeting. For the hearing impaired, the TTY number is (406) 444-7696 or (800) 335-7592, or Montana Relay at 711. Alternative accessible formats of this information will be provided upon request.

Comments may be submitted in writing at the meeting, by mail to Jeff Ebert, MDT, PO Box 3068, Butte, MT 59702-3068 or online at www.mdt.mt.gov/mdt/comment_form.shtml. Please indicate comments are for project CN 5098 and submit comments by October 17, 2008.

Lang, Corey E

From: Grant, Paul [pgrant@mt.gov]
Sent: Monday, September 08, 2008 9:19 AM
To: Butte - KXLF TV (E-mail); Butte Weekly; KAAR/KMBR/KXTL; KBOW/KOPR; KMSM; KTVM-TV; KXLF-TV; KXTL-KMBR-KAAR; Montana Standard
Cc: Ebert, Jeff; Olsen, Joe; Walsh, Joe; Lloyd, Miki; Lang, Corey E; Watt Levis, Charity; Grant, Paul; Butte Silver Bow County Commission; Road Supervisor
Subject: MDT Announces 2nd Public Meeting to Discuss Butte Interstate Traffic Study

September 8, 2008

FOR IMMEDIATE RELEASE

For more information:

Jeff Ebert, MDT Butte District Administrator, (406) 494-9600 Miki Lloyd, MDT Project Manager, (406) 444-9200 Corey Lang, PBS&J, (406) 599-1479 Paul Grant, Public Involvement Coordinator, (406) 444-9415

Public meeting to discuss Butte Interstate Traffic Study

Butte - The Montana Department of Transportation (MDT) is holding a public meeting to discuss the Butte Interstate Traffic Study on Wednesday, September 17, 2008. The open house meeting will be held at the Butte Civic Center, 1314 Harrison Avenue in Butte. Personnel from MDT and the project consultant team will be available to answer questions and take comments from 5:00 p.m. to 7:00 p.m., with a brief presentation at 5:30 p.m.

The purpose of this meeting is to review the study process and potential improvement options developed for the interstate system (I-15/I-90 and I-115) including the Rocker, West Butte, Excelsior Avenue, Montana Street, Harrison Avenue, East Butte and Continental Drive interchanges.

The goal of the Butte Interstate Traffic Study is to identify existing deficiencies and develop potential improvement options to address these deficiencies. The first phase of the project (identify existing deficiencies) was completed in 2007 and the second phase (develop potential improvement options) has reached a milestone with the completion of the draft Butte Interstate Traffic Study report. Currently there is no funding for any of the potential improvement options, but this study will develop a long-range planning document for the Butte Interstate system so future funding can be pursued.

Community participation is a very important part of the process, and the public is encouraged to attend. Opinion, comments and concerns may also be submitted in writing at the meeting, by mail to Jeff Ebert, District Administrator, at MDT's Butte district office at PO Box 3068, Butte, MT 59702-3068, or online at

www.mdt.mt.gov/mdt/comment_form.shtml

Please indicate comments are for project CN 5098 and submit them by October 17, 2008.

MDT attempts to provide accommodations for any known disability that may interfere with a person's participation in any service, program or activity of our department. If you require reasonable accommodations to participate in this meeting, please contact Paul Grant at (406) 444-9415 at least two days before the meeting. For the hearing impaired, the TTY number is (406) 444-7696 or 1-800-335-7592, or call Montana Relay at 711. Alternative accessible formats of this information will be provided upon request.

-----END-----

Project name: Butte Interstate Traffic Study Project ID: IM 0002(672) Control number 5098
Silver Bow County

Butte Interstate Traffic Study Overview

Presentation for:
Public Open House Meeting #2

September 17, 2008

Presentation Outline

- Overall Study Background & Goals
- Review Phase 2 Process
- Present Phase 2 Options

Project Background

- 2005 Butte-Silver Bow Transportation Plan Update
 - Committed Project CM4 – Butte Interstate Traffic Study
 - Recommended Committed Project RCM6 – Interstate Collaboration
- Additional projects with interstate access

Study Area



Project Goals

- Analyze existing conditions and identify deficiencies (Phase 1)
- Develop conceptual treatments, cost estimates and prioritize list of options (Phase 2)
- Provide a long-range planning document for the Butte Interstate system
- Identify funding requirements for potential options

Project Goals

- Implementation of any potential option is dependent on available funding
- Currently none of the potential options are programmed for implementation
- Minor add-on option elements will be considered in projects currently in development

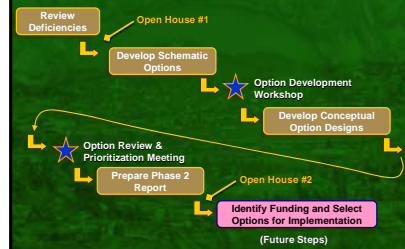
Benefits of Long Range Plan

- Provides guidance on prioritization of future improvements
- Used to review future development requests
- Potentially streamlines future project development
- Identifies future funding needs for corridor

Phase 2 Process

- Review Deficiencies (identified in Phase 1)
- Option Development Workshop
 - Determine All Reasonable Options that address a deficiency
 - Advance Options to Conceptual Design
- Option Review Meeting
 - Review Options for functional, operational & financial feasibility
 - Advance final options
- Prioritize Options
 - By timeframe
 - By priority
- Prepare Phase 2 Report
- Select Options for Implementation

Phase 2 Process



Types of Potential Improvement Options

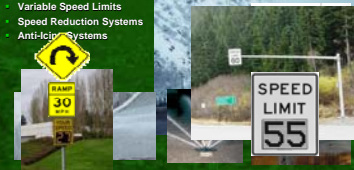
- Safety Options
 - Minor Improvements
 - Intelligent Transportation Systems (ITS)
- Full Reconstruction Options
 - Interchange Reconfigurations
 - Mainline Interstate Reconstruction

Non-Standard Options

- Intelligent Transportation Systems (ITS)
- Roundabouts
- Single Point Urban Interchange
- Variable Speed Limits
- Reclassification of I-115

Non-Standard Options

- Intelligent Transportation Systems (ITS)
 - Variable Message Signs
 - Variable Speed Limits
 - Speed Reduction Systems
 - Antilock Braking Systems



Non-Standard Options

Roundabouts

- Rocker Interchange
- Montana Street Interchange



Final Potential Options

- 31 Final Options
- 14 Corridor Wide and Minor Improvement Options
- 17 Full Reconstruction Options

Option Prioritization

- Potential Implementation Timeframe of Option
 - Near Term – 0 to 7 years (14 options)
 - Long Range – 7 to 20 years (15 options)
 - Ultimate – Beyond 20 years (2 options)
- Priority of Improvement
 - High – Address Safety Deficiency
 - Medium
 - Low – Corrects a Guideline Deficiency

Highest Priority Areas

- Highest Priority Areas for Improvement
 - West Butte EB off-ramp (left side)
 - Harrison Ave EB off-ramp & Dewey Blvd Spacing
 - Mainline Segment (West Butte to Montana St)
- Next Highest Priority Areas
 - EB Rocker on-ramp acceleration length
 - Harrison Avenue tight loop ramps
 - East Butte tight loop ramp
 - Montana Street access Issues

Next Steps

- Finalize Phase 2 Report – Fall 2008
- Identify funding for potential Options
- Implement potential Options based on available funding

Questions





WELCOME

to the

Butte Interstate
Traffic Study
Public Open House

*Wednesday, September 17, 2008 • 5:00 – 7:00 p.m.
A Brief Presentation will Begin at 5:30 p.m.*

PLEASE SIGN IN.

PROJECT GOAL AND OVERVIEW

PROJECT GOAL:

Provide a long-range planning document for the Butte Interstate system

- ◆ Analyze existing conditions and identify deficiencies (Phase 1)
- ◆ Develop conceptual treatments, cost estimates and prioritize list of options (Phase 2)

PROJECT STUDY ELEMENTS:

Phase 1 – Existing Conditions

- ◆ Safety Analysis
- ◆ Traffic Capacity & Operation Analysis
- ◆ Noise Study
- ◆ Geometric Features

Phase 2 – Develop Potential Projects

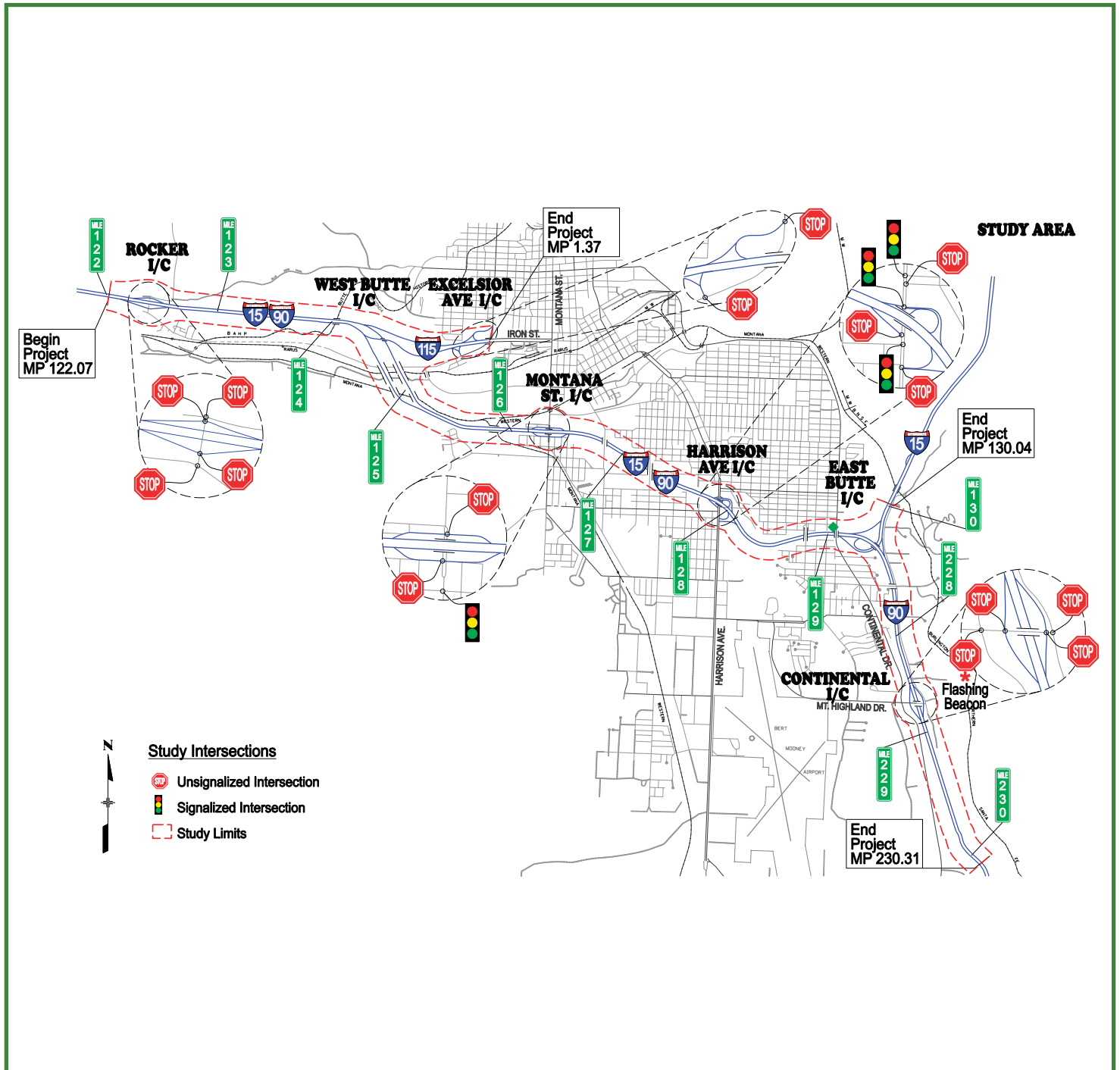
- ◆ Public involvement opportunities
- ◆ Develop list of safety/minor options
- ◆ Develop conceptual designs to address deficiencies identified in Phase 1
- ◆ Prepare cost estimates
- ◆ Prioritize options
- ◆ Prepare Phase 2 Report

FUTURE STEP:

- ◆ Identify funding and implement potential options

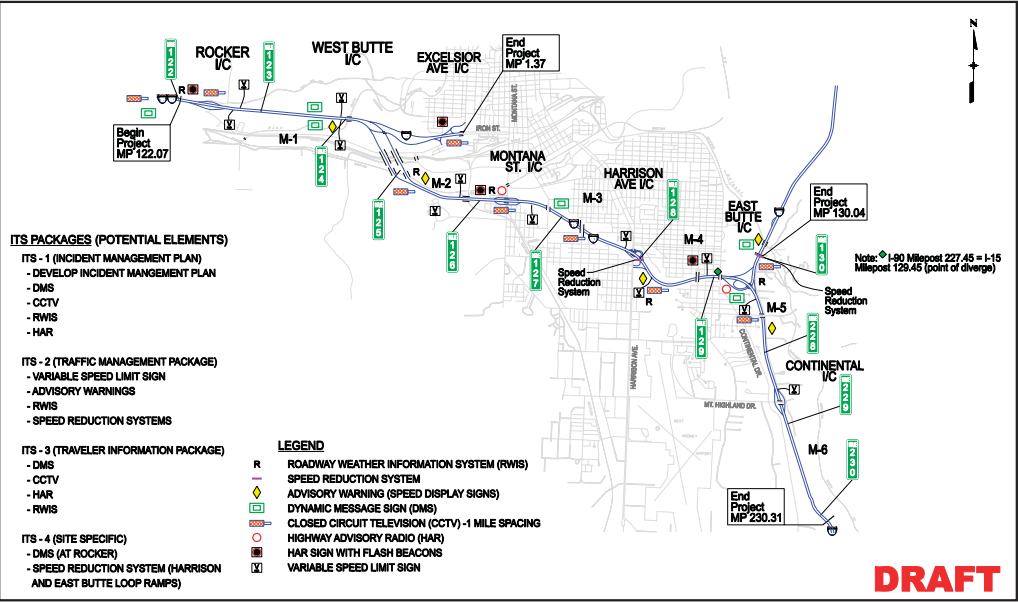


STUDY AREA MAP

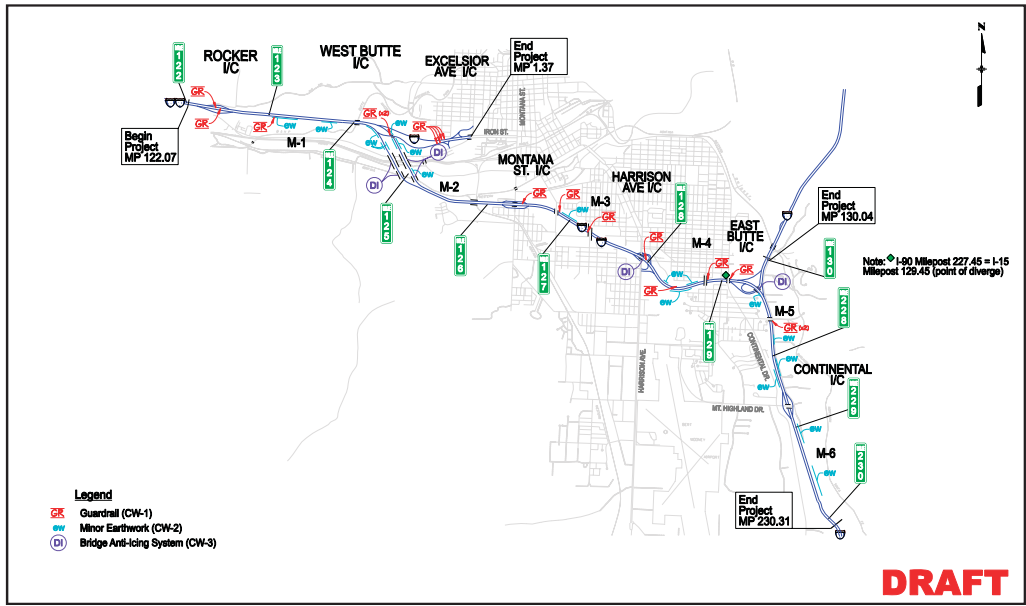


Corridor Wide Options

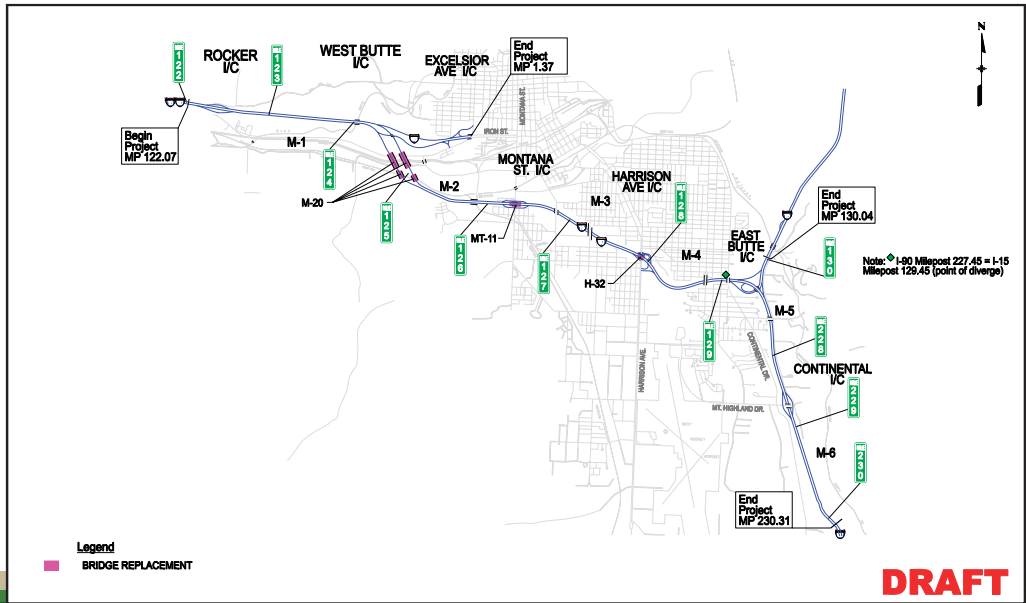
ITS Options



Corridor Safety Improvements



Bridge Replacements

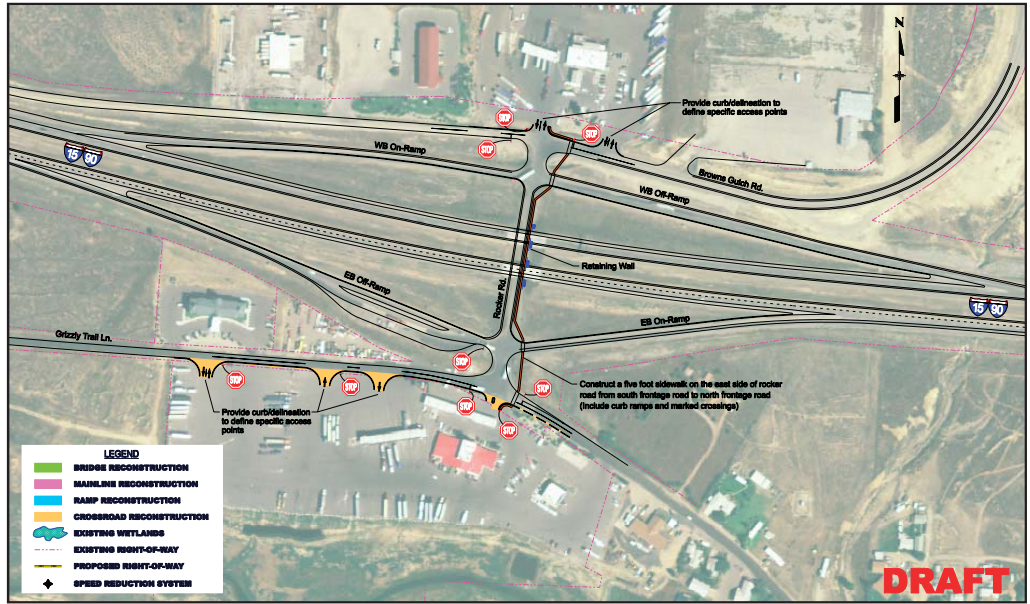


Near Term Options

Rocker Interchange

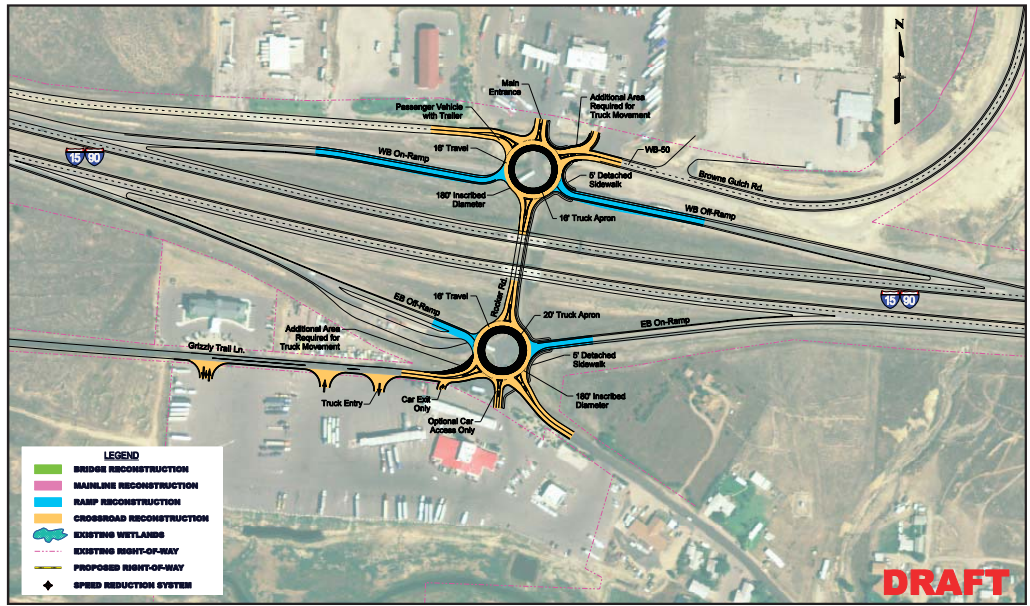
Near Term Options

Rocker Minor Improvements



Long Range Options

Rocker Roundabout Option



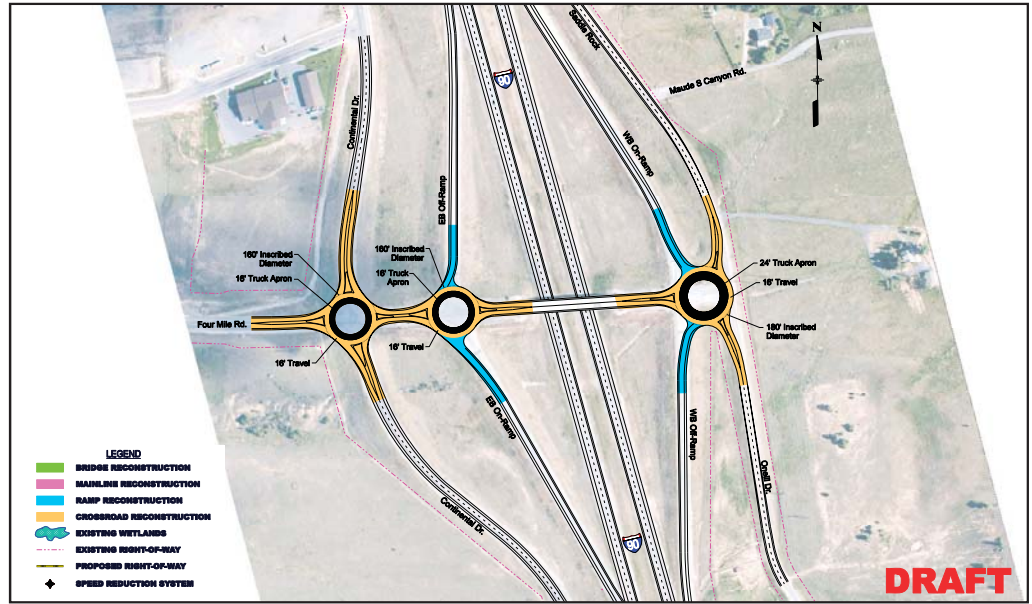
Eastbound Acceleration Lane



Continental Interchange

Long Range Options

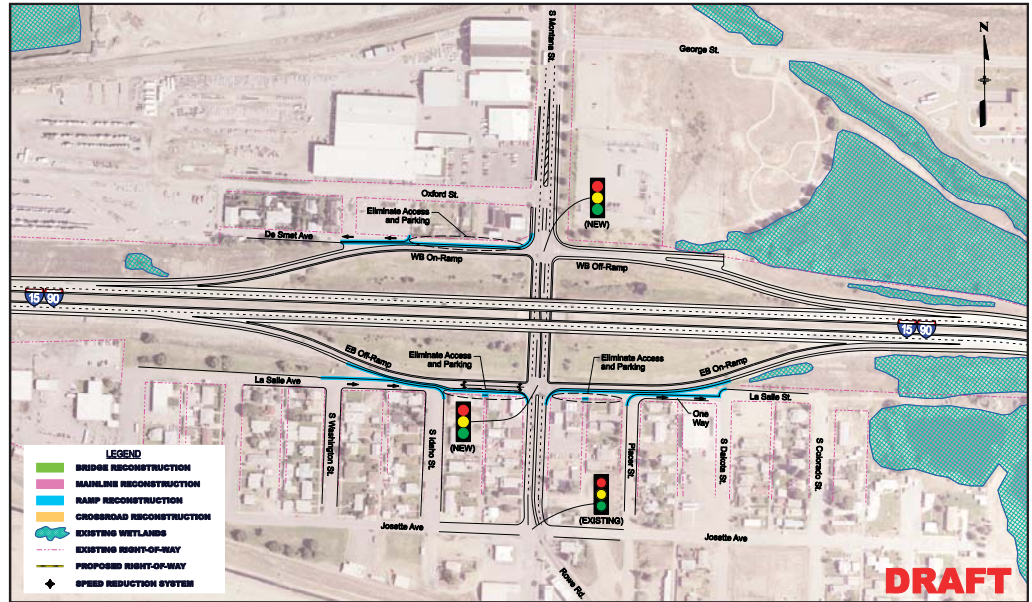
Roundabout
Option



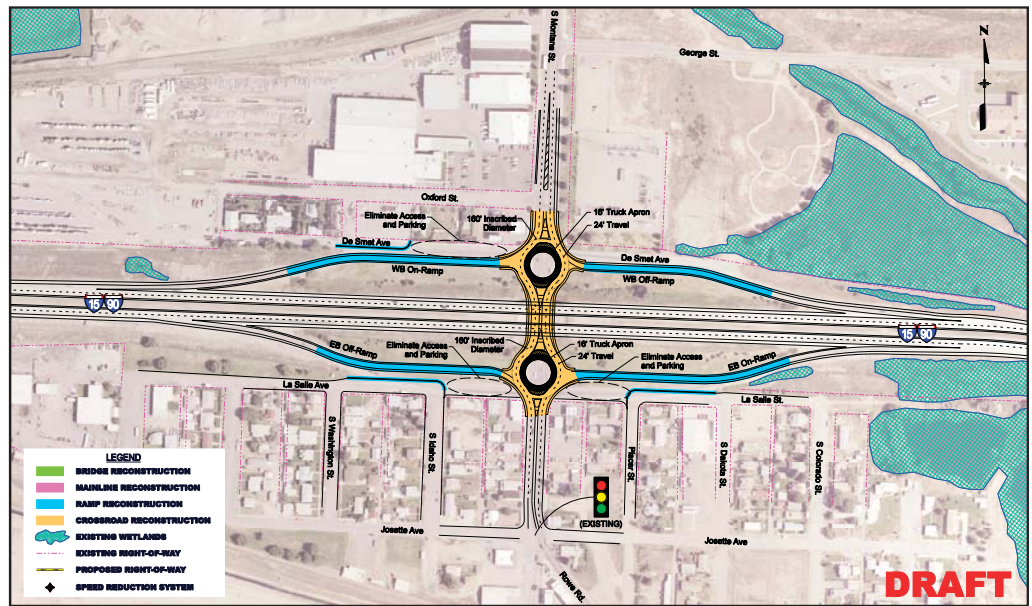
Montana Street Interchange

Near Term Options

Traffic Signal Option



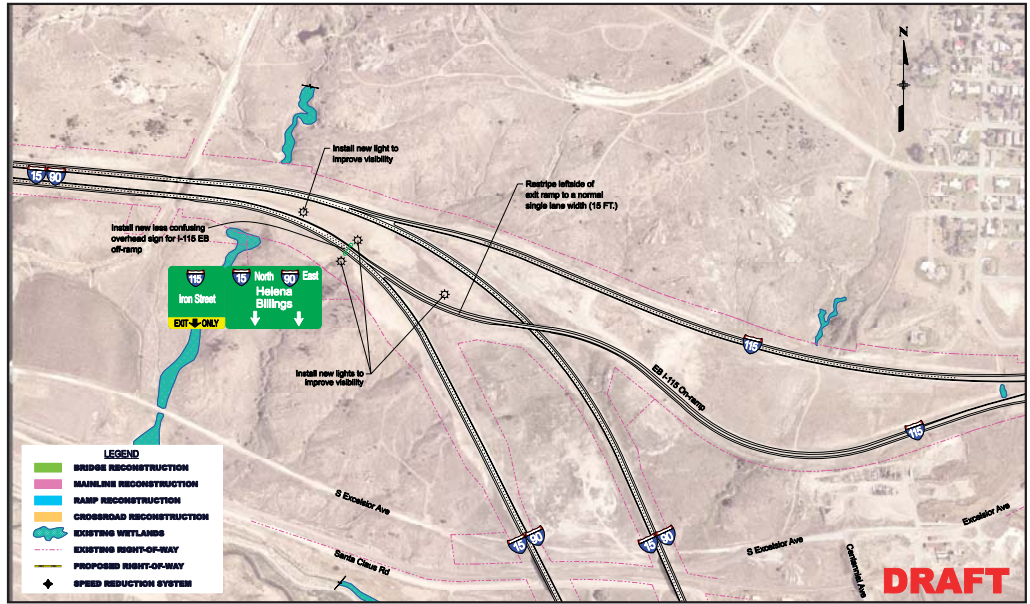
Roundabout Option



West Butte Interchange

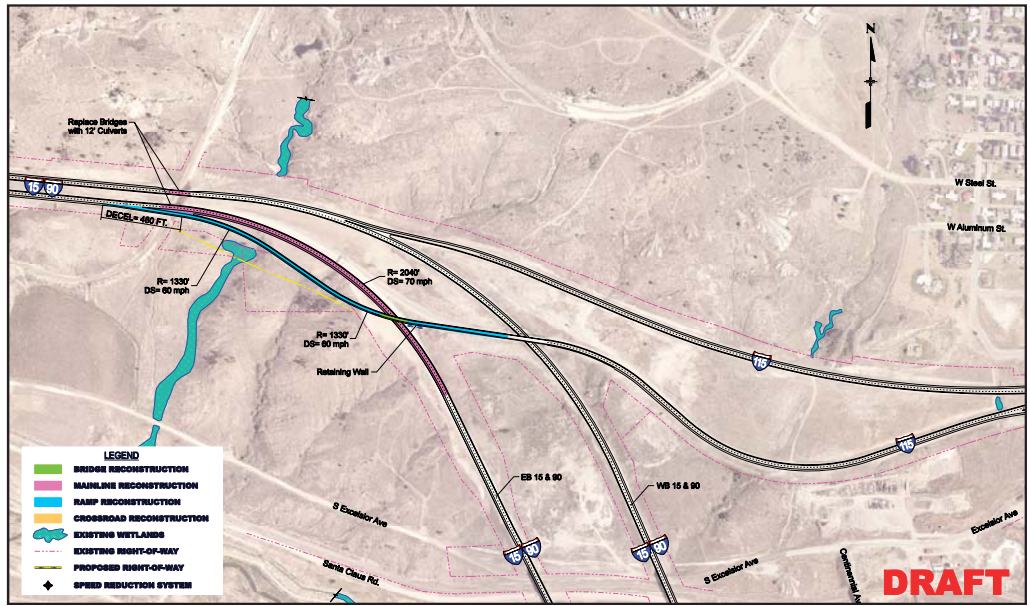
Near Term Options

West Butte
Minor
Improvements



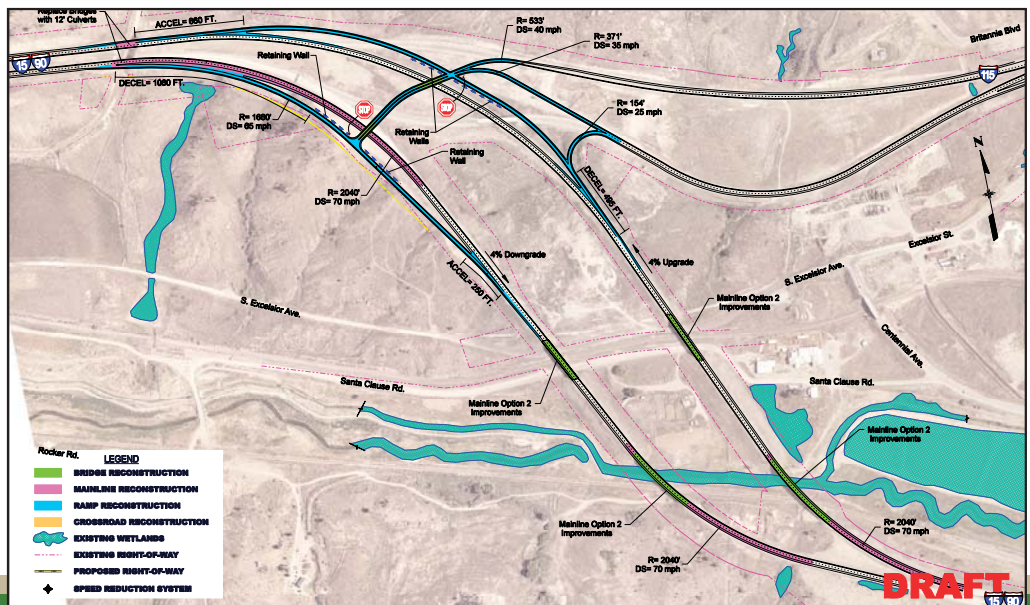
Long Range Option

Eastbound
Off-ramp
Option



Ultimate Option

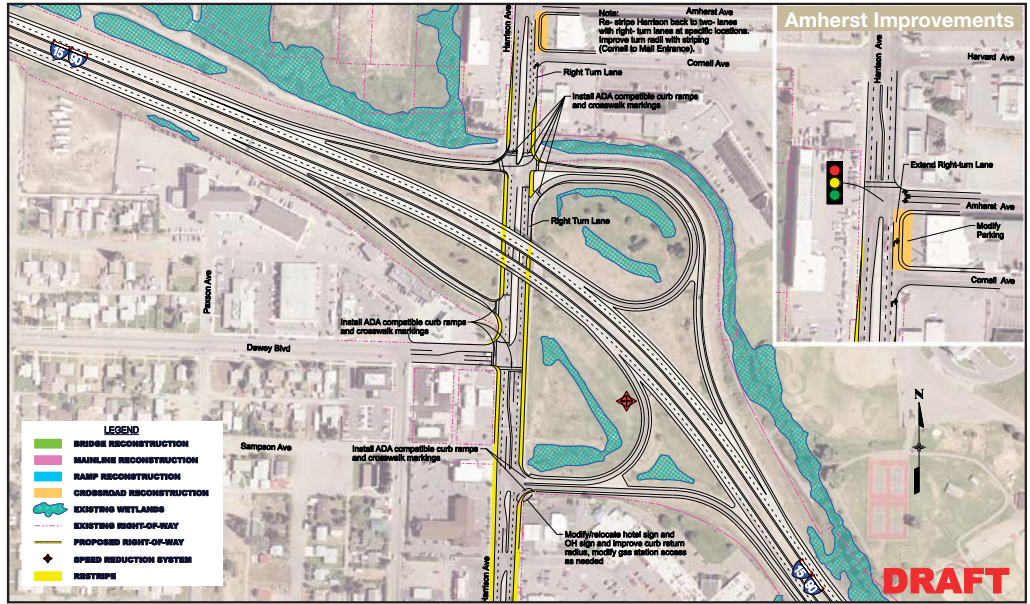
Diamond
Interchange
Option



Harrison Avenue Interchange

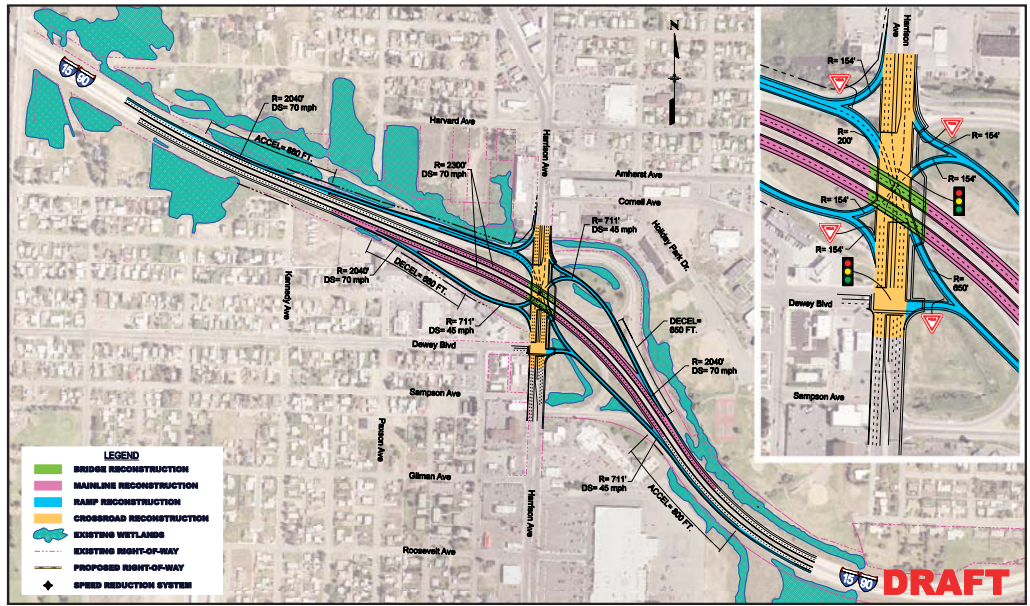
Near Term Options

Harrison
Minor
Improvements

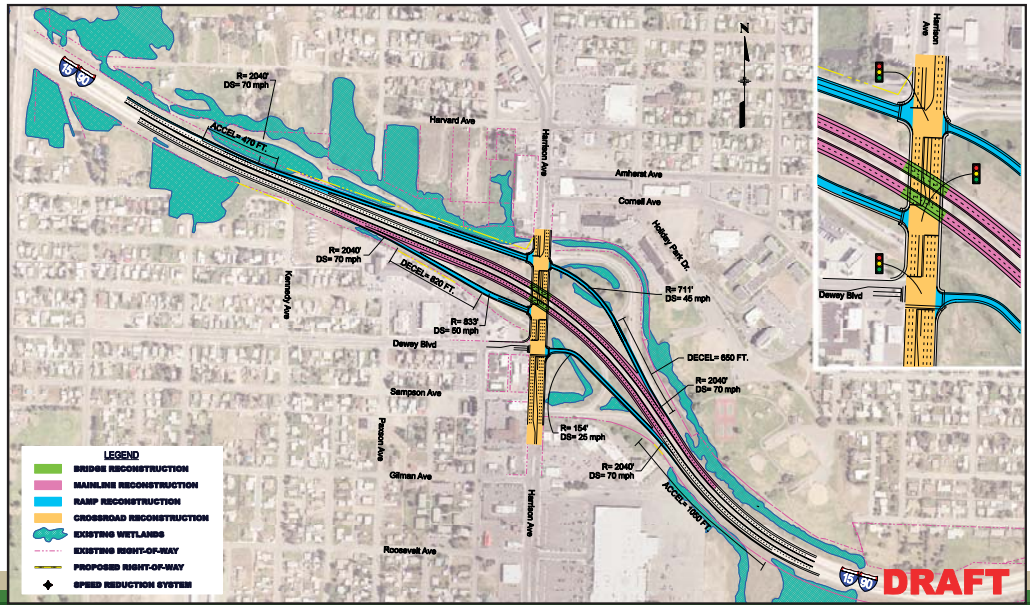


Long Range Option

Single-point
Urban
Interchange
Option



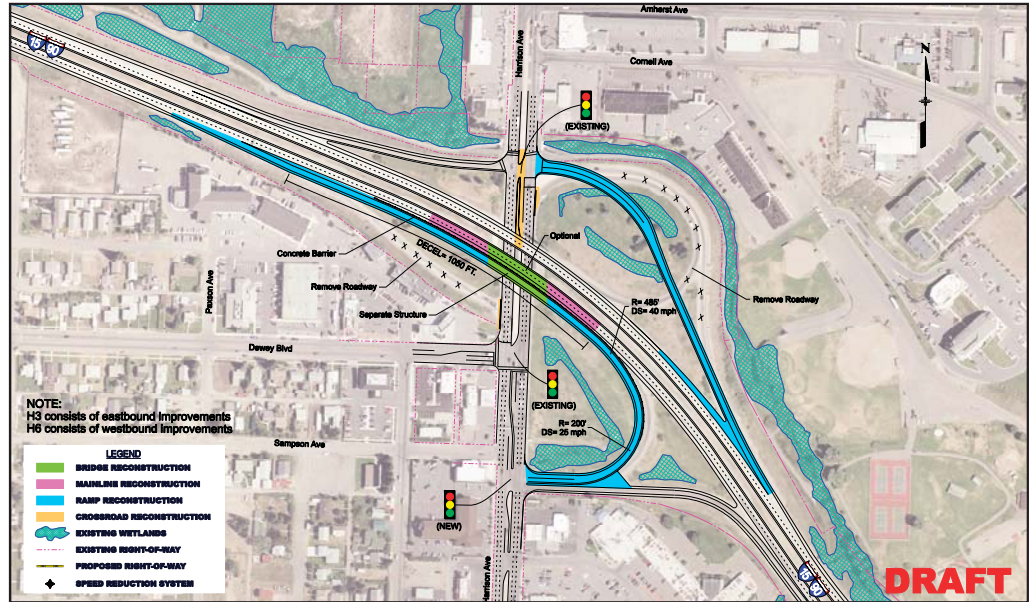
Diamond
Interchange
Option



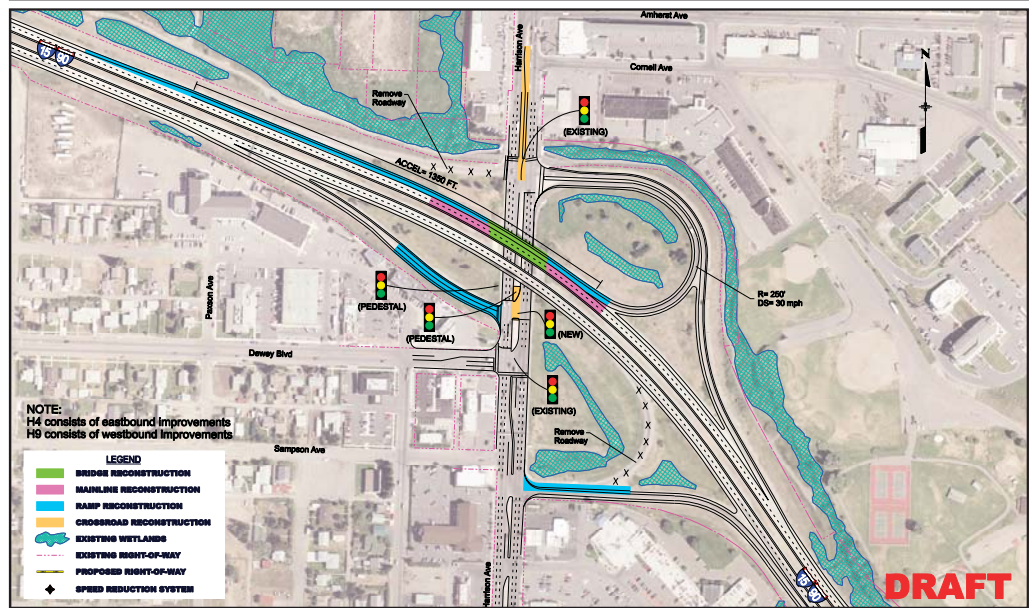
Harrison Avenue Interchange

Long Range Option

Combination Option



Combination Option

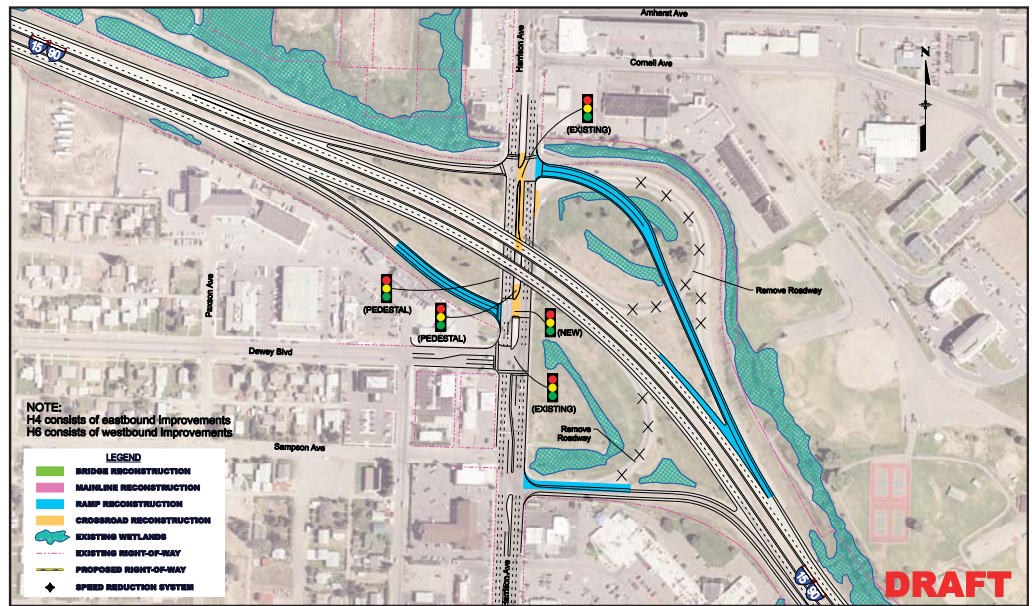
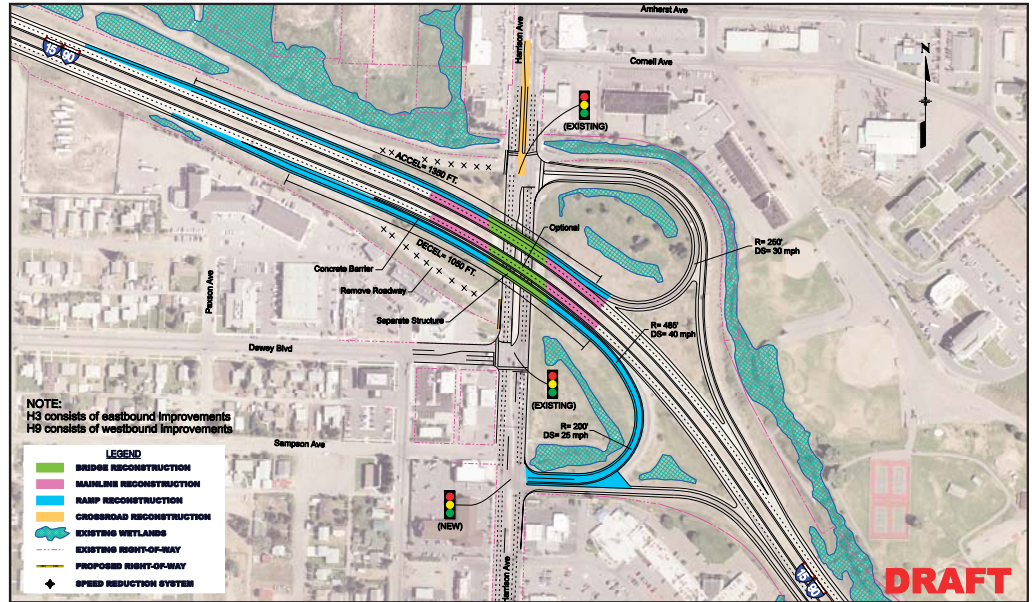


Harrison Avenue Interchange

Long Range Option

Improve Loop Ramp Option

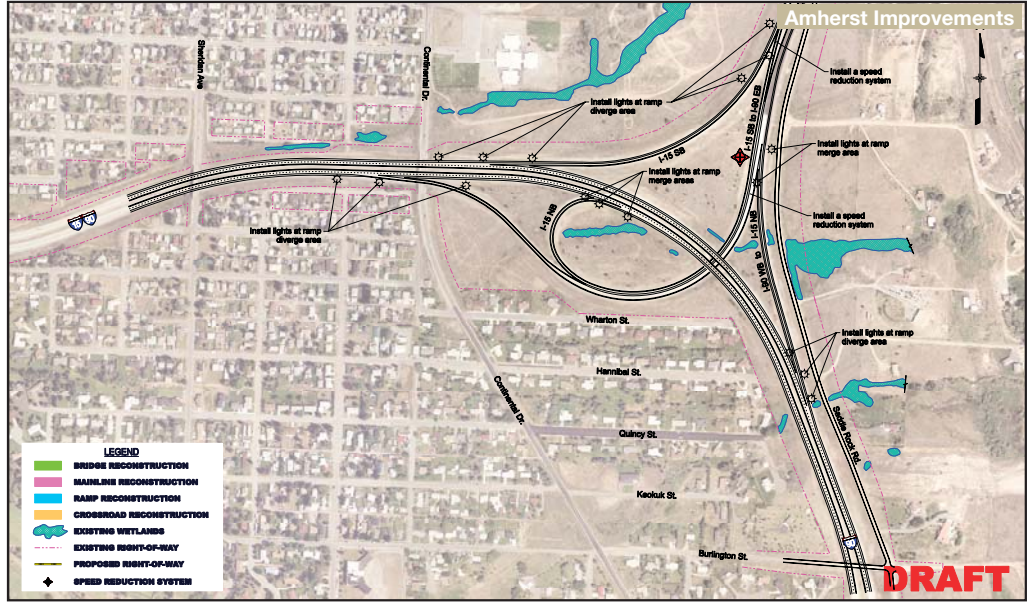
Remove Loop Ramp Option



East Butte Interchange

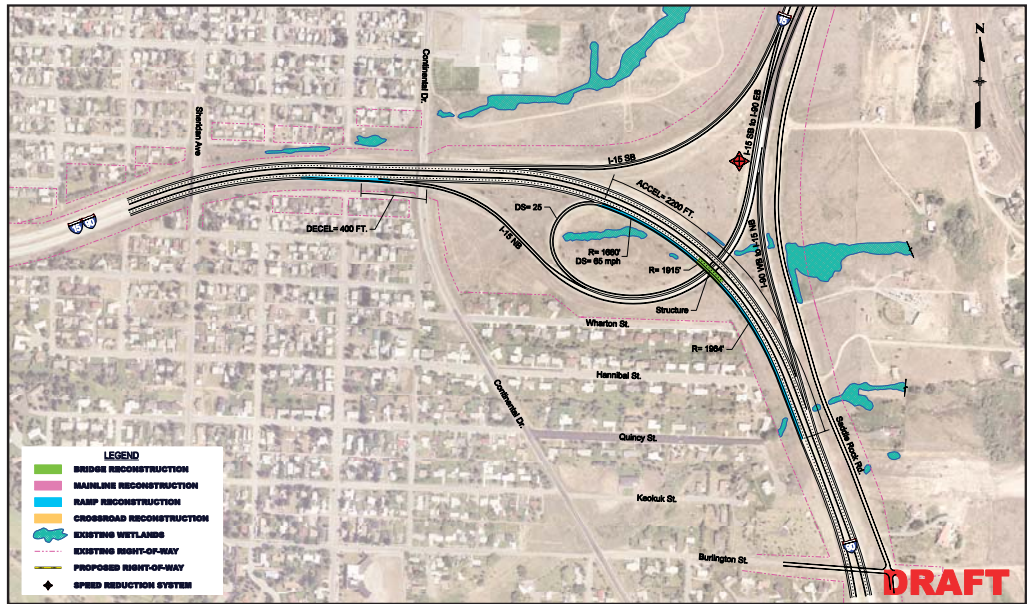
Near Term Options

East Butte
Minor
Improvements
Option



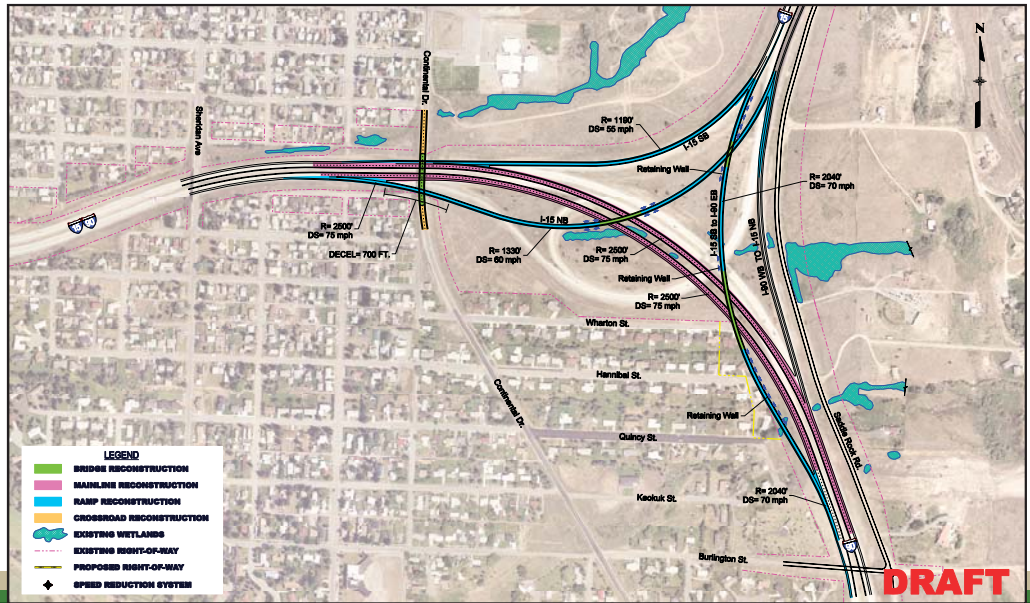
Long Range Option

Improve
Loop Ramp
Option



Ultimate Option

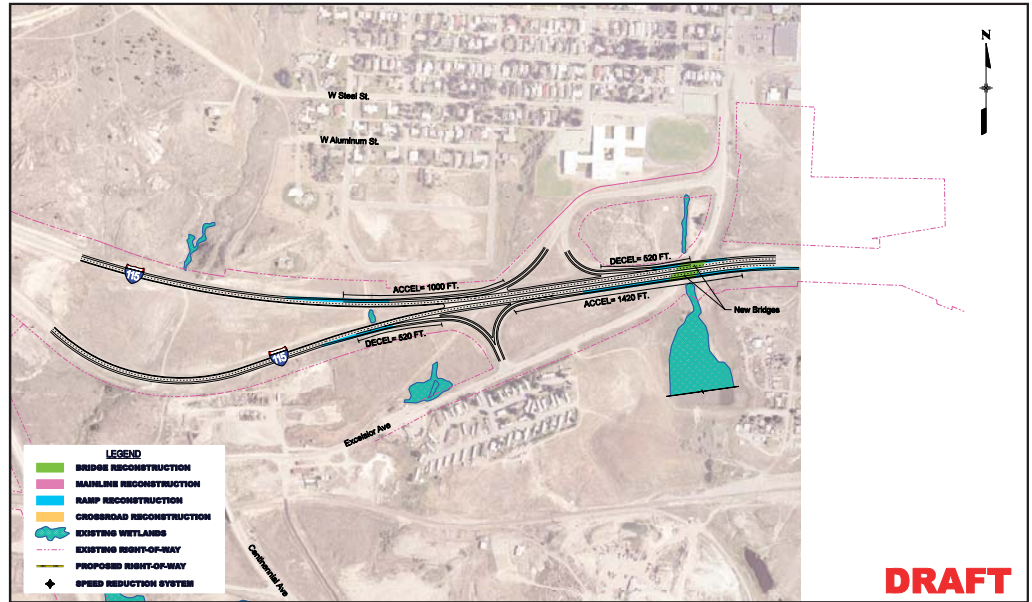
High Speed
System Level
Interchange
Option



Excelsior Interchange

Long Range Option

Improve Ramps Option





THANK YOU

Please fill out a comment form.

For additional information contact:

MDT

Jeff Ebert

District Administrator

MDT's Butte district office

PO Box 3068

Butte, MT 59702

(406) 494-9600

PBS&J

Corey Lang, P.E

Project Manager

3810 Valley Commons Drive

Suite 4

Bozeman, MT 59718

406-599-1479

http://www.mdt.mt.gov/pubinvolve/butte_traffic