



APPENDIX H

INTERCHANGE AND INTERSECTION CONCEPTS



APPENDIX H

INTERCHANGE AND INTERSECTION CONCEPTS

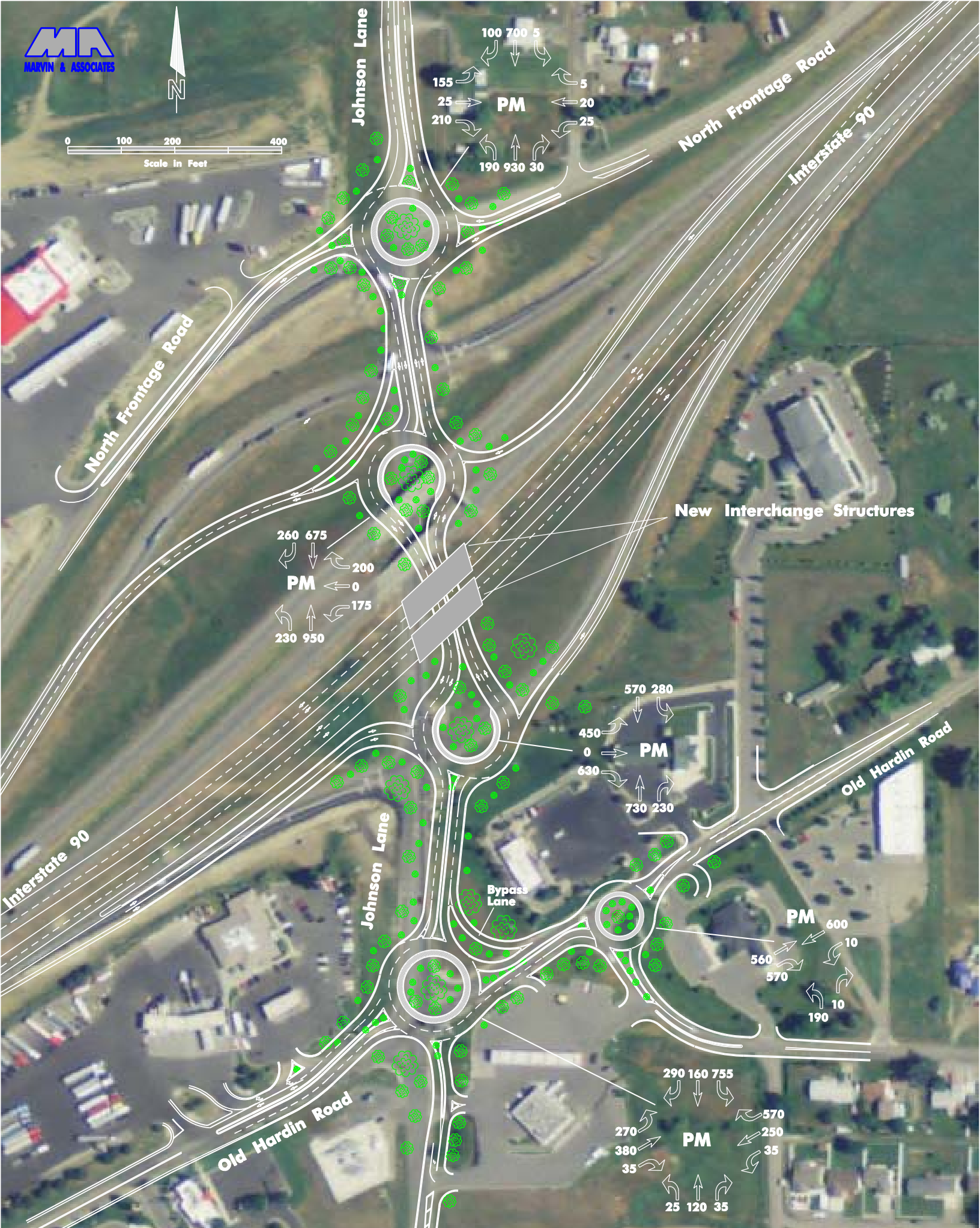
FULL BUILDOUT



BILLINGS BYPASS EIS
NCPD 56(55)CN 4199

FINAL ENVIRONMENTAL IMPACT STATEMENT – MARCH 2014

I-90 / JOHNSON LANE INTERCHANGE CONCEPTS

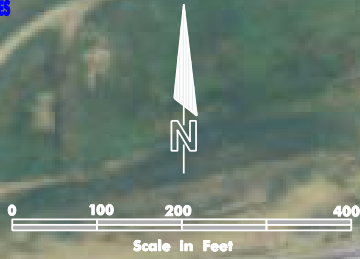


New Interchange Structures

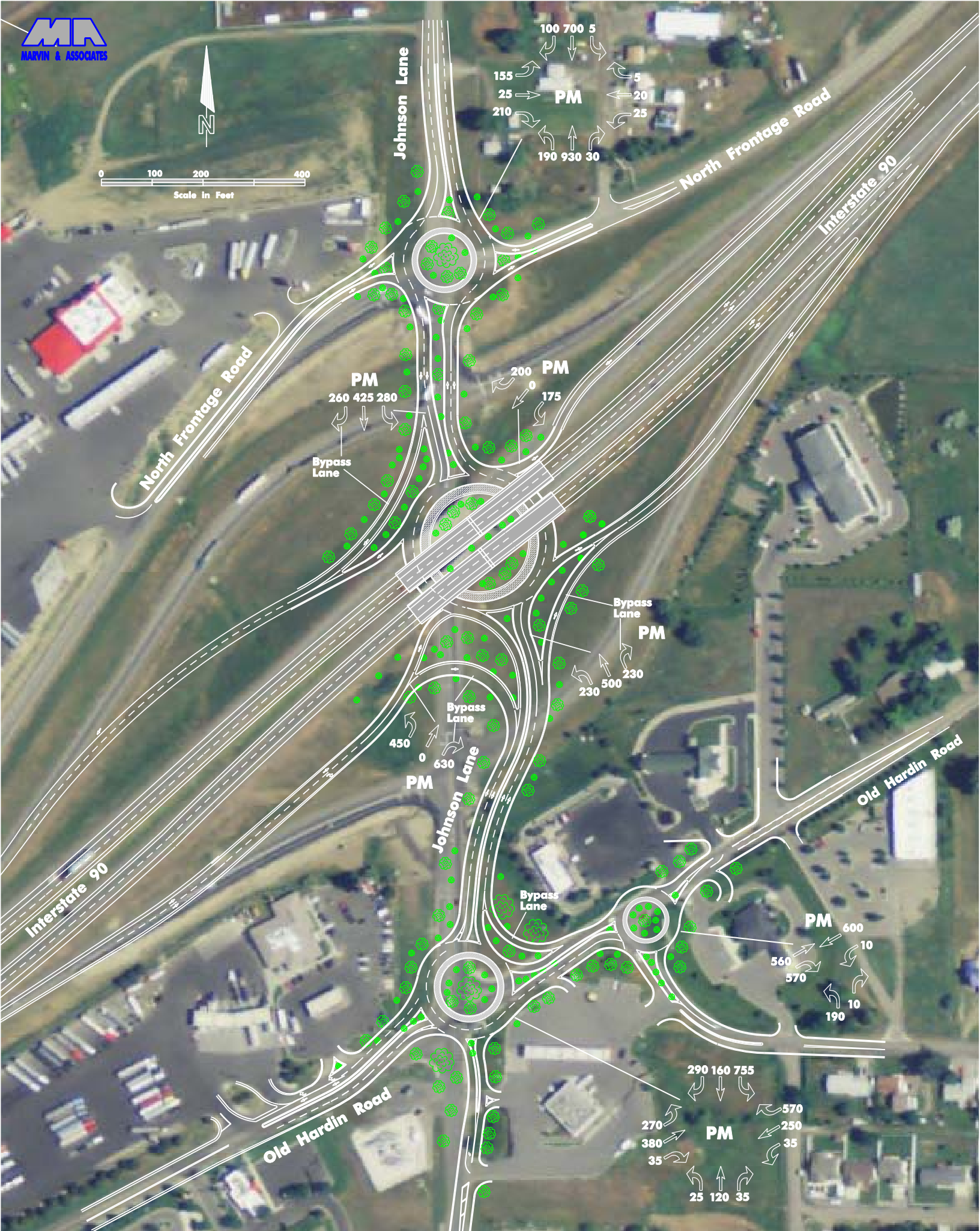
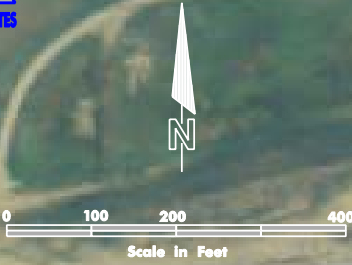
Bypass Lane

Old Hardin Road

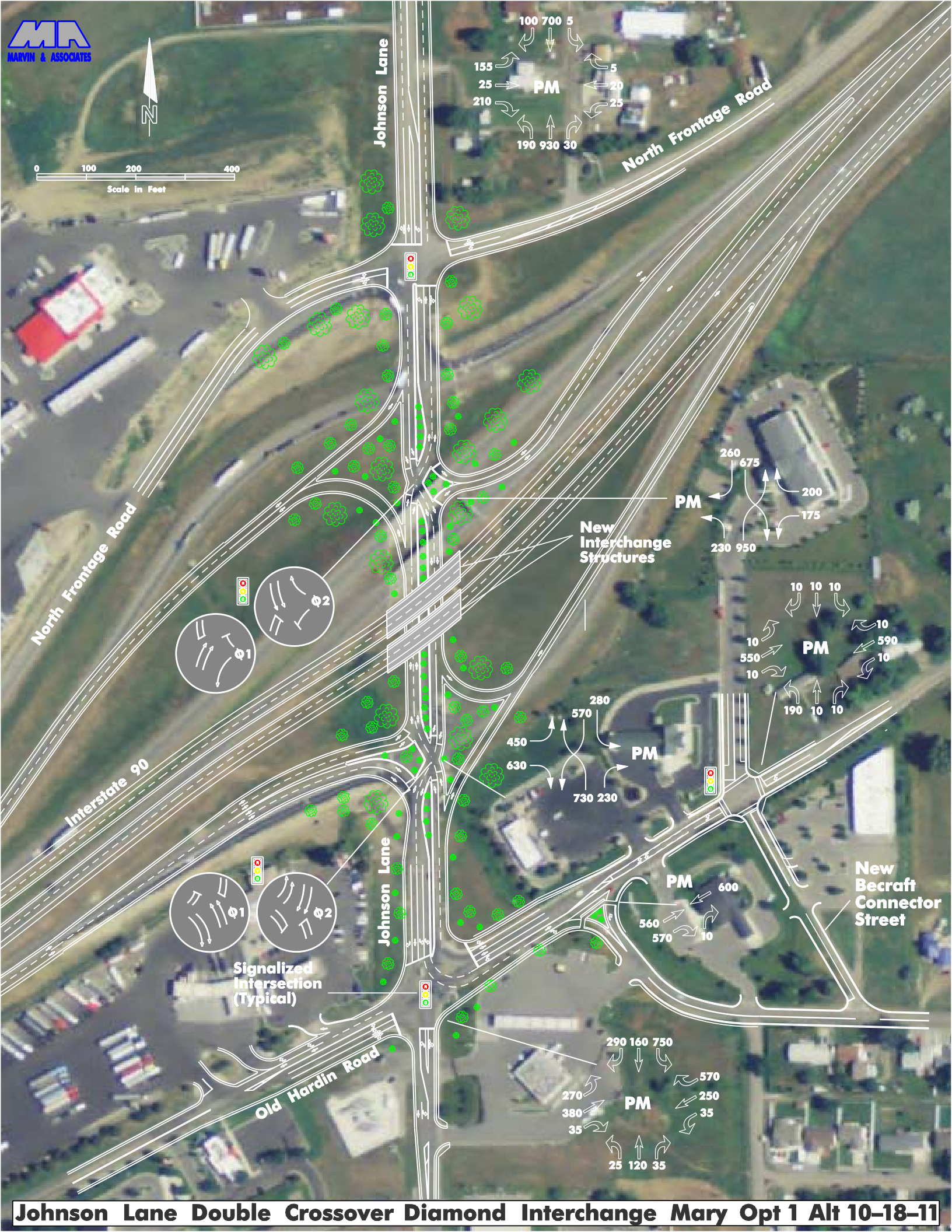
Johnson Lane Interchange Roundabouts Mary Option 1 Alternative 10-18-11



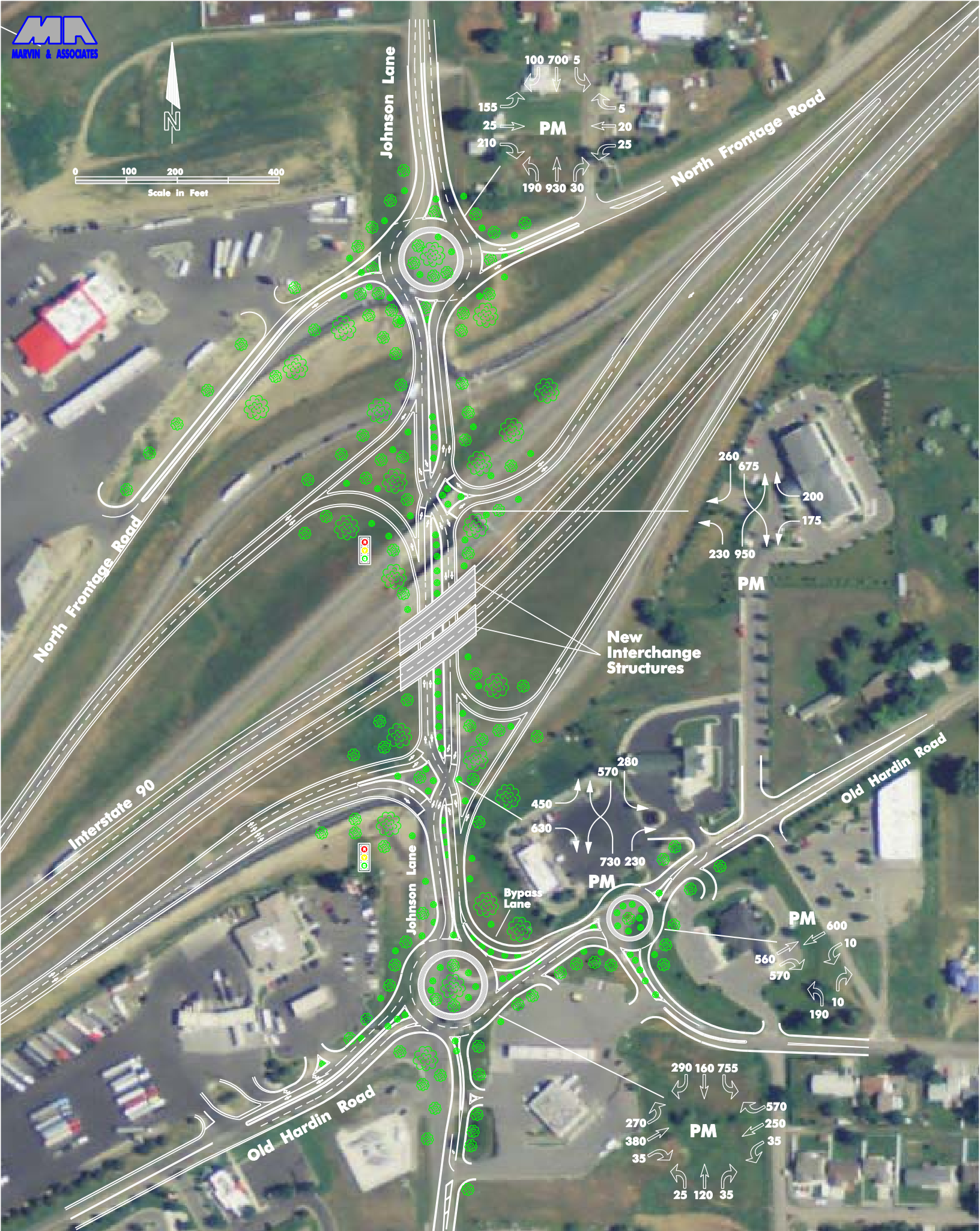
Johnson Lane SPUI Interchange Mary Option 1 Alternative 10-18-11



Johnson Lane SPUI Interchange with Roundabouts Mary Opt 1 Alt 10-17-11



Johnson Lane Double Crossover Diamond Interchange Mary Opt 1 Alt 10-18-11



Johnson Lane Double Crossover Option2 Mary Opt. 1 Alt. 10-20-11



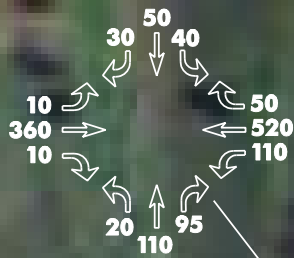
BILLINGS BYPASS EIS
NCPD 56(55)CN 4199

FINAL ENVIRONMENTAL IMPACT STATEMENT – MARCH 2014

MARY STREET / BITTERROOT DRIVE INTERSECTION CONCEPTS



Bitterroot Drive

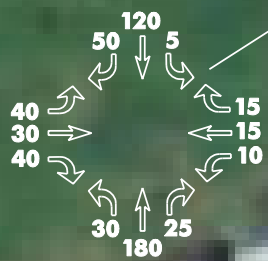


Additional RW



Mary Street Alignment

New House



Mary Street Option 1 Alignment Bitterroot Road Alternative A



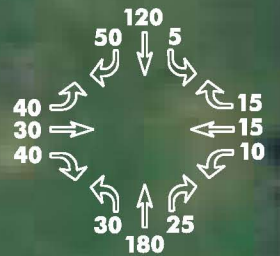
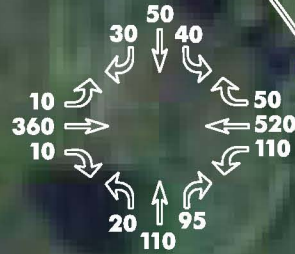
Bitterroot Drive

Additional RW

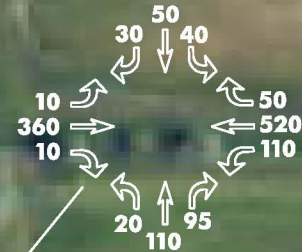
Mary Street Alignment

Existing Mary Street

New House



Mary Street Option 1 Alignment Bitterroot Drive Intersection Alternative B Roundabout

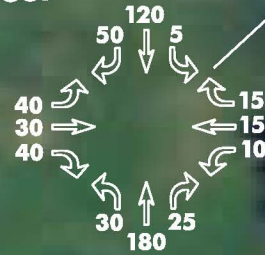


Additional RW



Mary Street Alignment

Existing Mary Street



Mary Street Option 1 Alignment Bitterroot Drive Intersection Alternative C Signal



BILLINGS BYPASS EIS
NCPD 56(55)CN 4199

FINAL ENVIRONMENTAL IMPACT STATEMENT – MARCH 2014

**MARY STREET / OLD HWY 312 /
MAIN STREET / US 87 / BENCH BLVD
INTERSECTION CONCEPTS**



Figure I-1. Option 1 – Main Street Roundabouts with Access to Mary St/Bench Blvd. T-intersection



Figure I-3. Option 3 - Dual Roundabouts

US 87 (Roundup Road)

PM Design Hour Traffic Typical

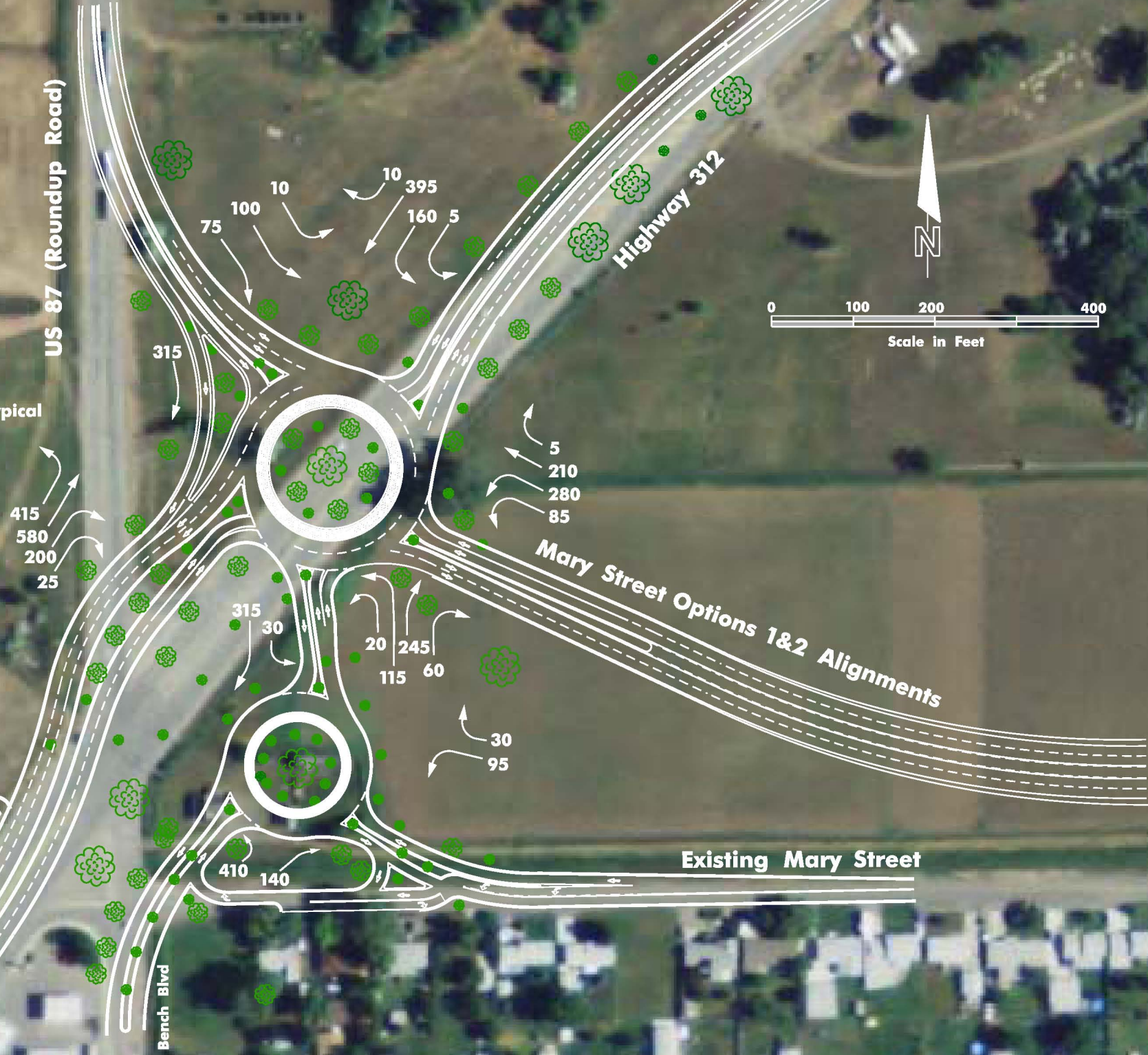


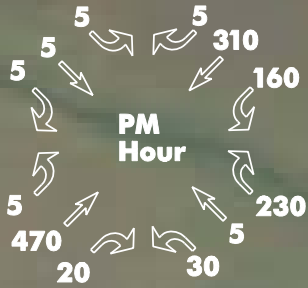
Figure I-2. Option 2 - Primary & Secondary Roundabouts



FIVE MILE ROAD / OLD HWY 312 INTERSECTION CONCEPTS



Scale in Feet



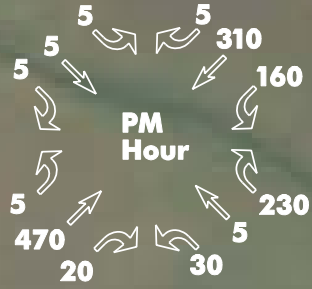
Highway 312

5 Mile Road Alt Alignment Option 1

HWY 312 - 5 Mile Road Alignment Intersection Option 1 Signal



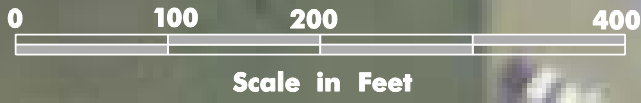
Scale in Feet



Highway 312

5 Mile Road Alt Alignment Option 1

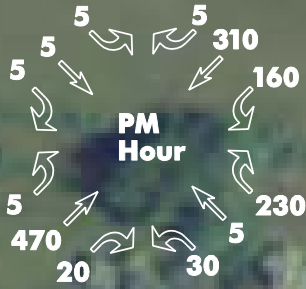
HWY 312 – 5 Mile Road Alignment Intersection Option 1 Roundabout



Highway 312

5 Mile Road Alt Alignment Option 2

HWY 312 – 5 Mile Road Alignment Intersection Option 2 Signal



Highway 312

5 Mile Road Alt Alignment Option 2

HWY 312 – 5 Mile Road Alignment Intersection Option 2 Roundabout



APPENDIX H

INTERCHANGE AND INTERSECTION CONCEPTS

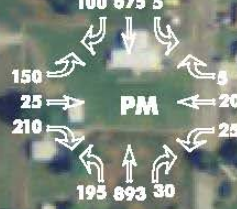
PHASE 1



0 100 200 400
Scale in Feet

Johnson Lane

Mary Street Opt 2 Alignment
2035 PM Design Hour
Traffic (Typical)



North Frontage Road

Interstate 90



New Becraft
Connector
Street

Old Hardin Road

Figure 7. Mary Street Option 2 Phase 1 Johnson Lane Design Concept



Figure 8. Mary Opt 2 Johnson Lane – Coulson Road Intersections Phase 1



Phase 1 Year 2035
PM Design Hour Traffic



Five Mile Road

Mary Street Alignment Option 1

Mary Street (Frontage Rd)

Mary Street Alignment Option 1

Figure 9. Mary Street Option 1 – Five Mile Road Intersection Phase 1

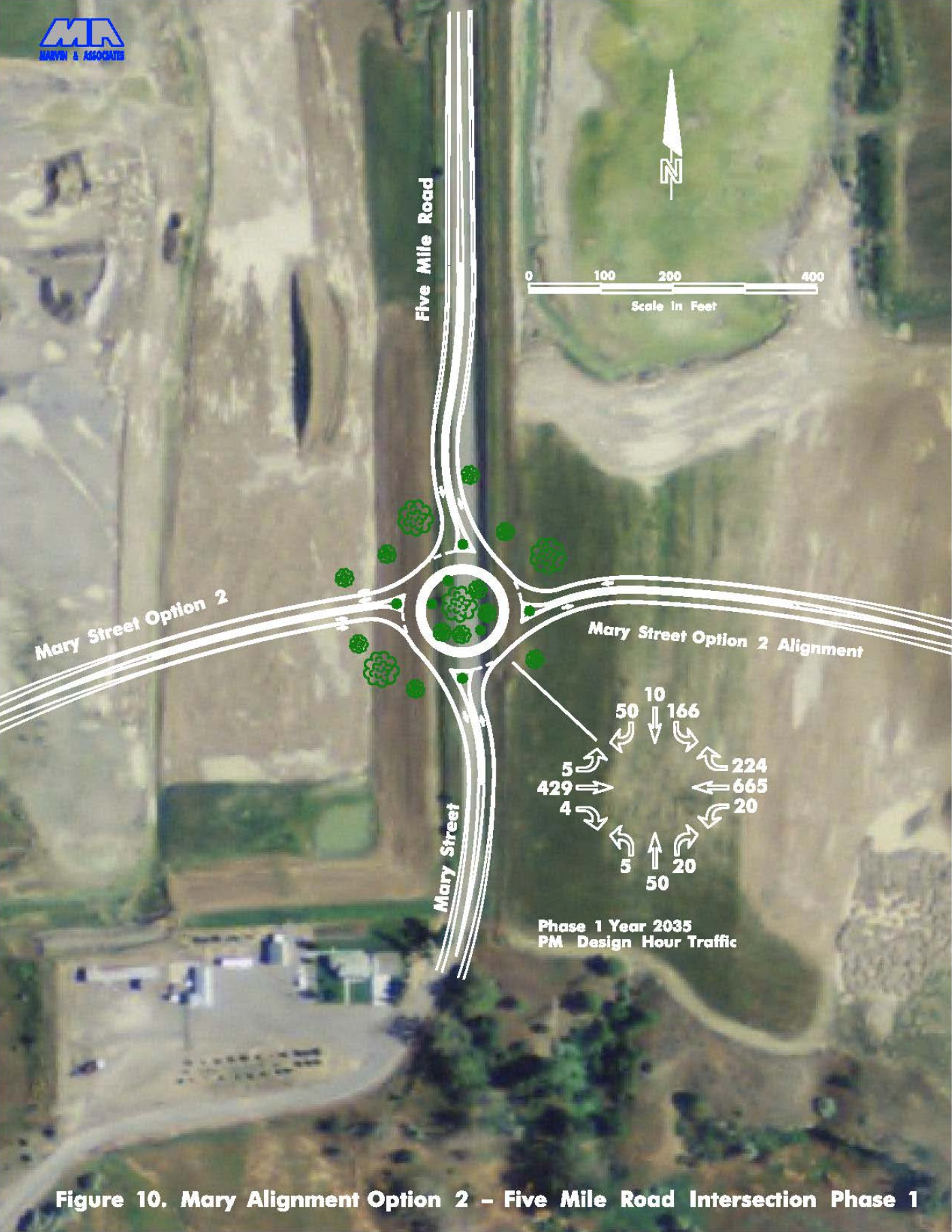


Figure 10. Mary Alignment Option 2 – Five Mile Road Intersection Phase 1



Bitterroot Drive

Mary Street Alignment



**Phase 1 year 2035
PM Design Hour Traffic**

Existing Mary Street

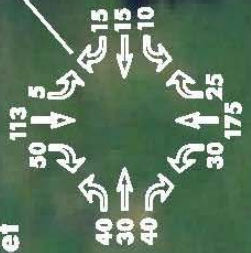


Figure 11. Mary Option 2 Alignment & Bitterroot Phase 1

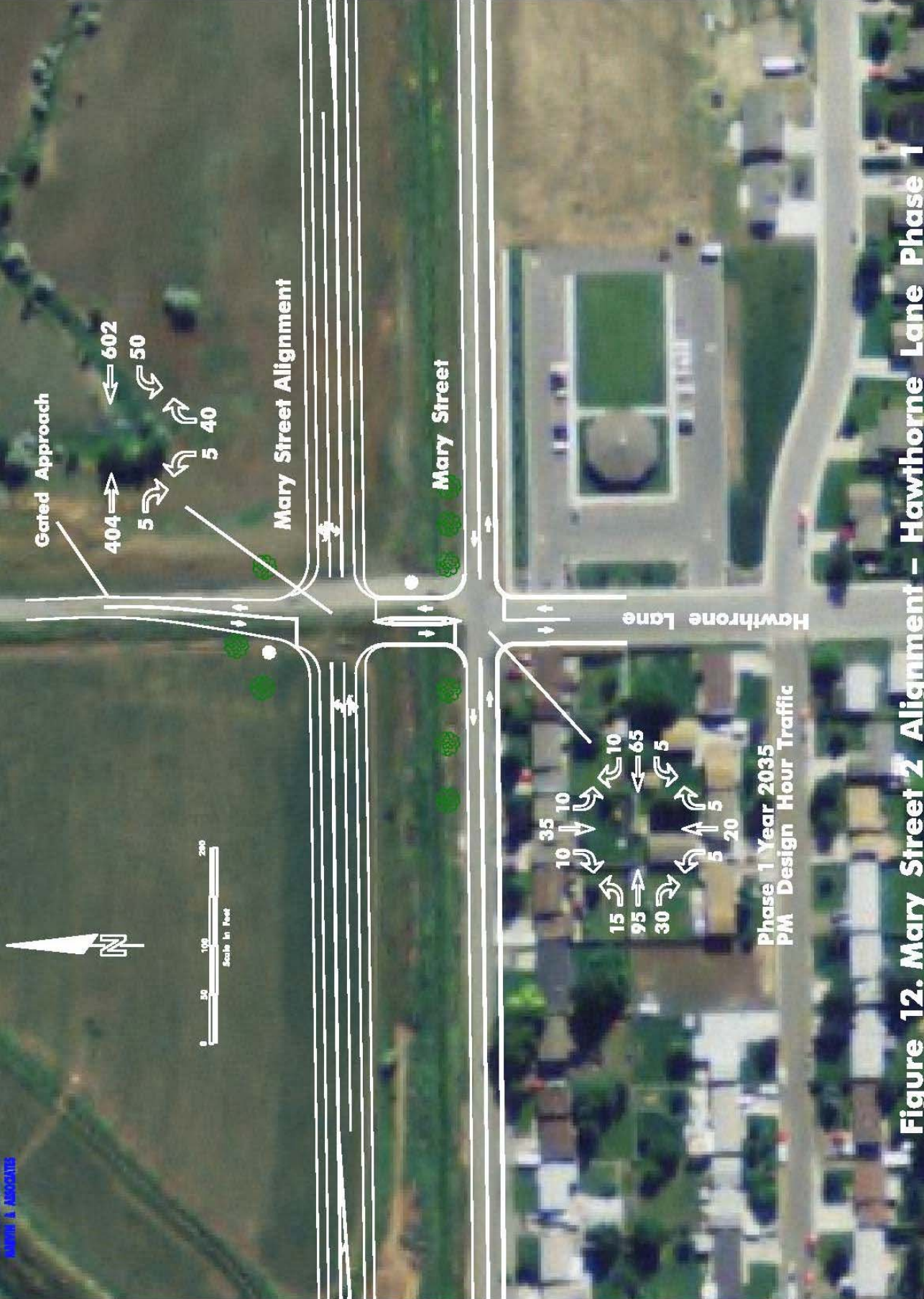


Figure 12. Mary Street 2 Alignment - Hawthorne Lane Phase 1



Future Signal



Phase 1 Year 2035
PM Design Hour Traffic



Highway 312

5 Mile Road Alt Alignment

Figure 13. Five Mile Road Alternative & Old Hwy 312 Phase 1



Figure 14. Five Mile Road Alignment – Mary Street Phase 1

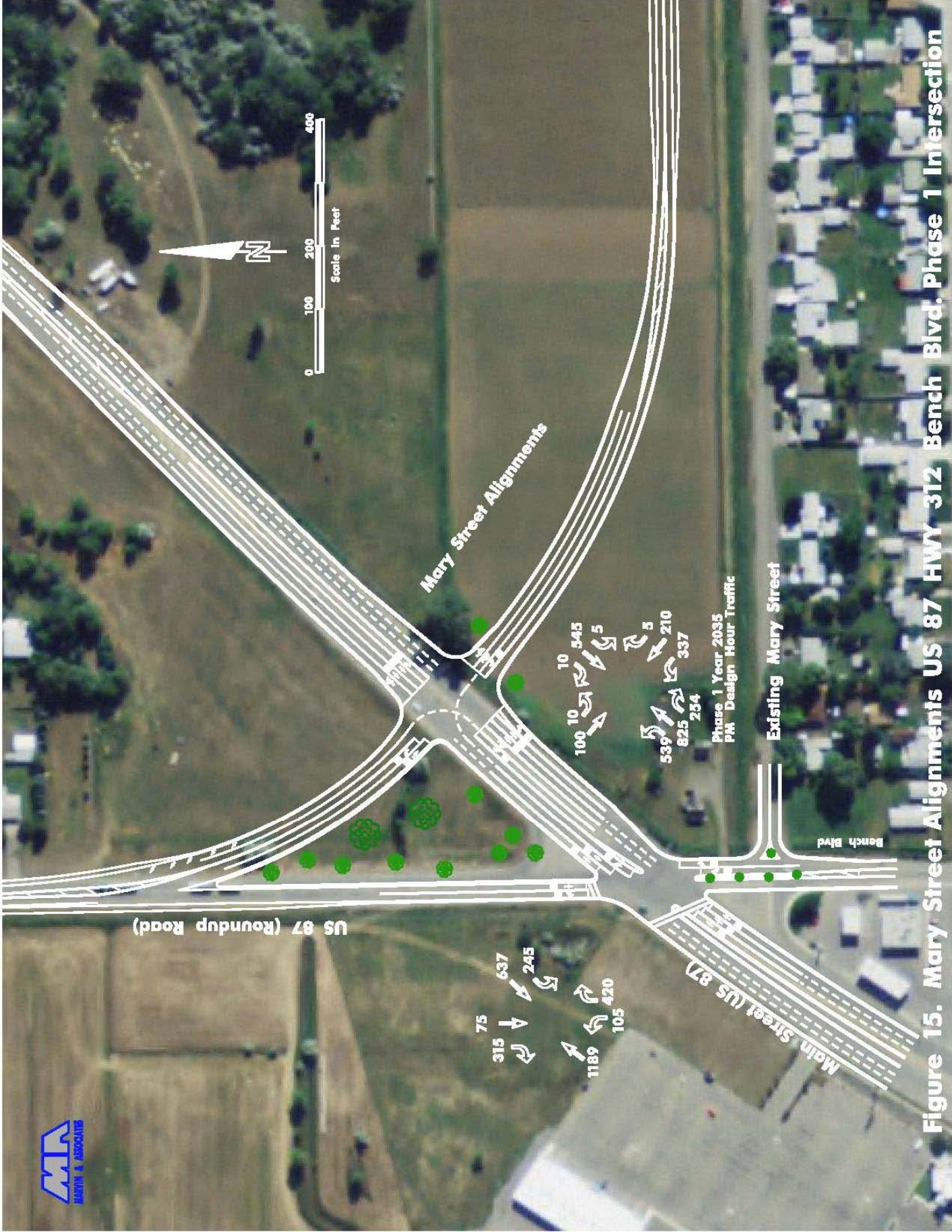


Figure 15. Mary Street Alignments US 87 HWY 312 Bench Blvd. Phase 1 Intersection

