

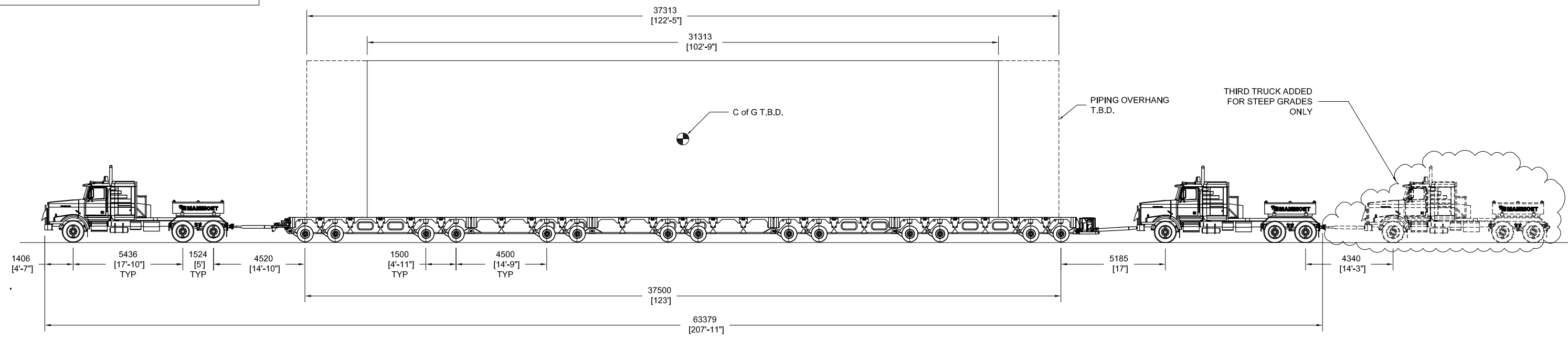


APPENDIX 7 – Table of Contents – Transport Configuration

PRELIMINARY
NOT INTENDED FOR USE
 THE INFORMATION CONTAINED IN THIS DRAWING
 SHALL BE CONSIDERED PRELIMINARY AND IS SUBJECT
 TO CHANGE PRIOR TO FINAL (IFC) ISSUE.

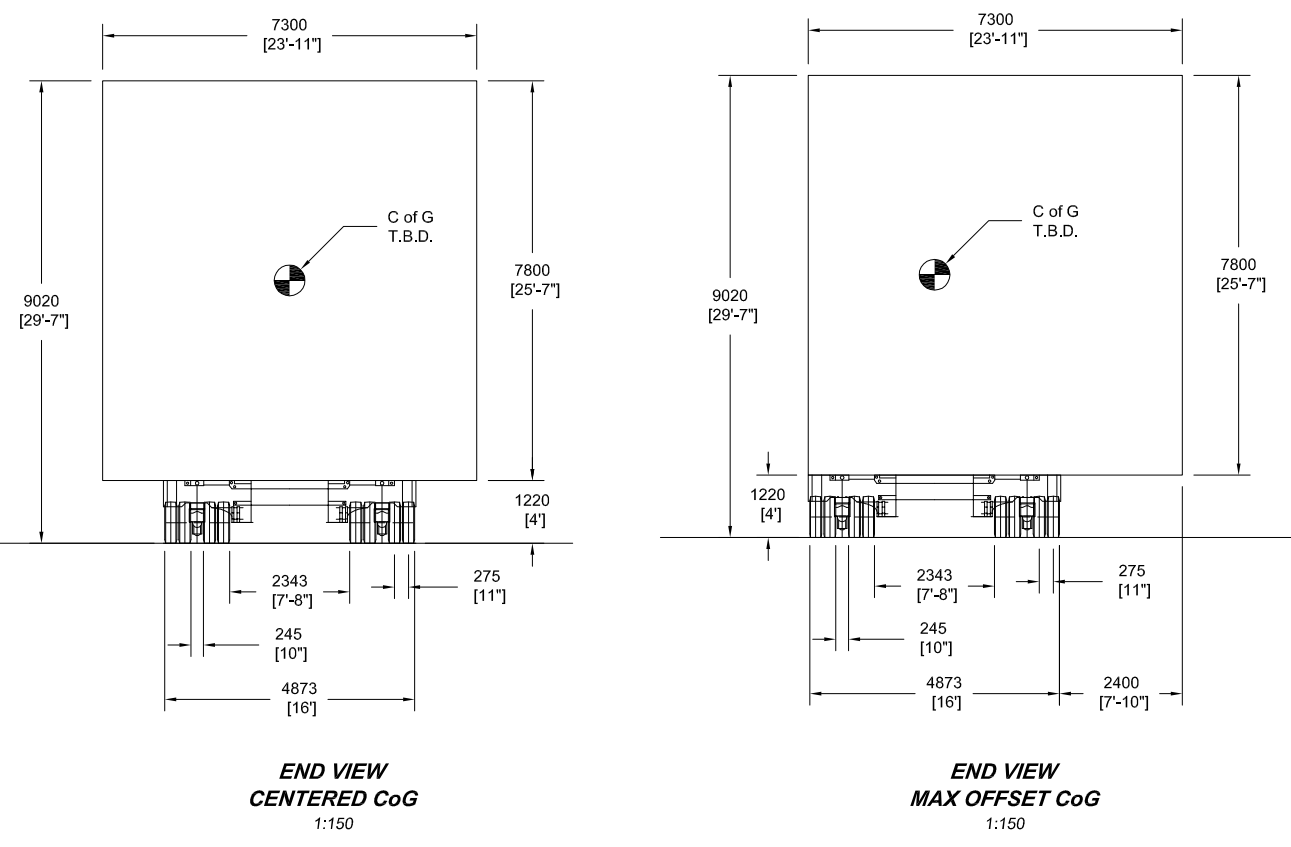
OVERALL WEIGHTS (HIGHWAY)

	KGS	LBS
TWO TRACTORS:	56,244	124,000
TRAILERS AND EQUIPMENT:	78,900	173,945
TARE WEIGHT:	135,144	297,945
LOAD:	156,000	343,921
GROSS VEHICLE WEIGHT:	291,144	641,866



ELEVATION VIEW
 1:200

THIS DRAWING PRODUCED UNDER
 MAMMOET CANADA WESTERN
 APEGGA PERMIT #P07433



END VIEW
CENTERED CoG
 1:150

END VIEW
MAX OFFSET CoG
 1:150

TRACTOR(S)	TRACTOR STEERING AXLE		TRACTOR DRIVE AXLES	
	KGS	LBS	KGS	LBS
COMPONENTS				
TARE WEIGHT	7,257	16,000	5,897	13,000
COUNTERWEIGHT	-	-	14,968	33,000
GROSS WEIGHT	7,257	16,000	20,865	46,000
WEIGHT PER AXLE LINE	7,257	16,000	10 430	23,000
WEIGHT PER UNIT OF TIRE WIDTH	8.5 KGS/MM	478 LBS/IN	11.3 KGS/MM	523 LBS/IN
TIRE SIZE	2 TIRES @ 425mm x 572mm [16.73in x 22.5in]		8 TIRES @ 280mm x 620mm [11.0in x 24.5in]	

TRAILER	14-LINE INTERCOMBI ROADSTYLE SPLIT-FILE SCHEUERLE TRAILER	
	KGS	LBS
COMPONENTS		
TARE WEIGHT	78 900	173,945
TRANSPORT EQUIPMENT	-	-
LOAD DISTRIBUTION	156 000	343,921
GROSS WEIGHT	234 900	517,866
WEIGHT PER 8-TIRE AXLE LINE	16 779	36,990
WEIGHT PER UNIT OF TIRE WIDTH	8.9 KGS/MM	500 LBS/IN
TIRE SIZE (APROX. 125 psi PER TIRE) (8.6 bar)	112 TIRES @ 235mm x 445mm [9.25in x 17.5in]	

- NOTES:**
- MODULE WEIGHT IS 156,000 kgs (343,921 lbs) AND IS ASSUMED FOR PERMITTING.
 - CENTRE OF GRAVITY ASSUMED.
 - LOAD LENGTH AS PER FLUOR EMAIL CORRESPONDENCE DATED JUNE 2, 2010. LOAD WIDTH AND HEIGHT AS PER AMEC DWG 074-0040-090-064-001 01.
 - PUSH TRUCK TO BE REMOVED PRIOR TO CROSSING ARROW BRIDGE.
 - NOT ALL LOAD INFORMATION IS PROVIDED THEREFORE O/A HEIGHT, O/A WIDTH AND AXLE LOADINGS ARE PRELIMINARY.
 - GENERAL INTEGRITY OF LOAD, BASED ON SUPPORT ARRANGEMENT SHOWN, IS THE RESPONSIBILITY OF THE CLIENT.

- GENERAL NOTES:**
- ENSURE LOAD IS SECURELY FASTENED TO TRAILER DURING TRANSPORTATION.
 - ENSURE TRANSPORT ROAD IS CLEAR OF OBSTACLES.
 - TRAILER SHALL BE MAINTAINED AND OPERATED IN ACCORDANCE WITH MANUFACTURERS' PROCEDURES AND ALL OTHER APPLICABLE CODES, STANDARDS, GUIDELINES, ETC.
 - ALL TONNES ARE METRIC (1Te = 2,205lbs).

REV	DESCRIPTION	DATE	DWN	CHKD
07	REVISED MAX MODULE SIZE	JUN 02, 10	SRB	
06	GENERAL REVISION	APR 19, 10	SJG	
05	GENERAL REVISION	APR 19, 10	SJG	
04	GENERAL REVISION	APR 19, 10	SRB	
03	GENERAL REVISION	APR 14, 10	SRB	
02	REVISED TRAILER WIDTH	APR 13, 10	SRB	
01	ADDED 2ND PUSH TRUCK	DEC 21, 09	WLB	
00	PRELIMINARY RELEASE	OCT 20, 09	WLB	MT

CLIENT: **FLUOR - IORVL**
 PROJECT: **KEARL OIL SANDS PROJECT**
 TITLE: **TRANSPORTATION DRAWING OF A 156,000 kgs MODULE ON A 14 LINE 16' WIDE HYDRAULIC PLATFORM TRAILER**

MAMMOET
 MAMMOET CANADA Western Ltd.
 12920-33rd Street N.E., Edmonton, Alberta
 CANADA, T6S 1H6
 Tel. +1 (780) 449-0552 / Fax. +1 (780) 417-9623

THIS PUBLICATION REMAINS THE PROPERTY OF THE PUBLISHER AND SHALL BE TREATED AS CONFIDENTIAL, UNLESS CONTRACTUALLY SPECIFIED OTHERWISE. NO PART OF IT MAY BE REPRODUCED, STORED IN A RETRIEVAL SYSTEM OR TRANSMITTED IN ANY FORM OR BY ANY MEANS, WITHOUT THE PRIOR WRITTEN PERMISSION OF THE PUBLISHER.
 © 2000 MAMMOET [COSP-02-01-01]

SAP No:	SCALE:	SIZE:	PROJECT No:	OFFICE:	DOC:	PART:	REV:
7000048911	NOTED	B	10039355 -P042	-D	T040	-07	