

# Greater Helena Area Transportation Safety Summit

*presented to*

**Greater Helena Area Community**

*presented by*

**Cambridge Systematics, Inc.**

**Audrey Wennink**

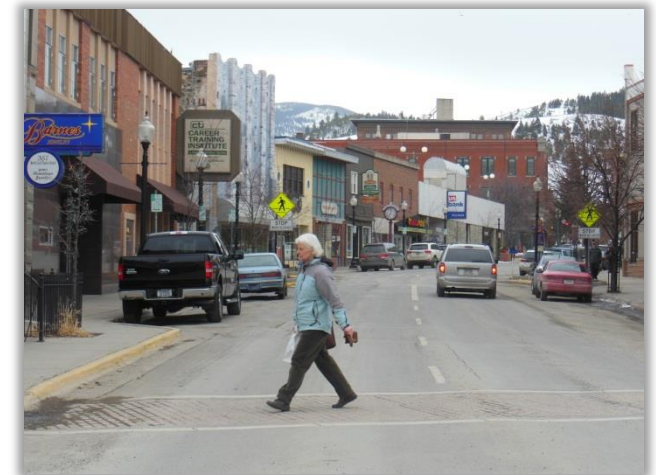
**May 21, 2013**

Transportation leadership you can trust.



# Agenda

- **Welcome and Introductions**
- **Overview of the Community Transportation Safety Plan (CTSP)**
- **Assemble into Emphasis Area Discussion Groups**
- **Break**
- **Emphasis Area Safety Strategies Team Reports**
- **Next Steps and Schedule**



# Desired Summit Outcomes

- **Confirm Goals & Emphasis Areas**
- **Discuss Greater Helena Area crash characteristics and existing programs**
- **Identify safety strategies for the plan, including:**
  - » **Activities/Action steps**
  - » **Implementation Stakeholders/Partners**
  - » **Resources/Funding Needs**



# Local Project Team

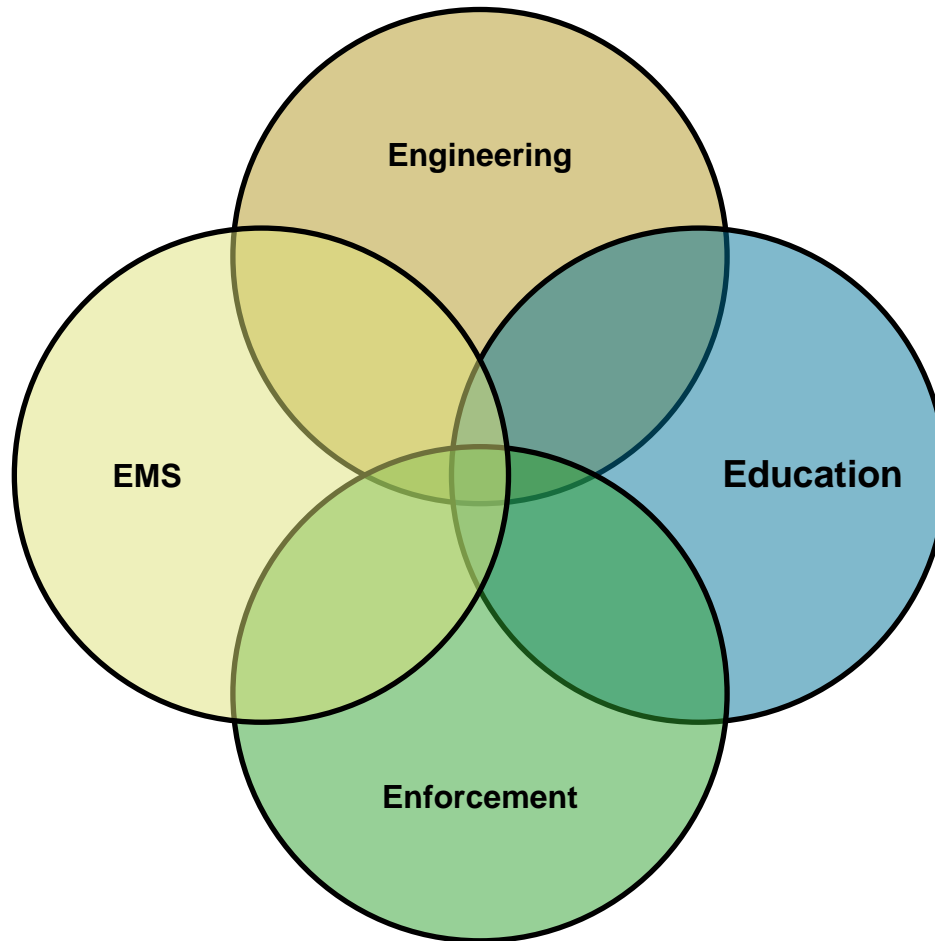
- **Transportation Safety Advisory Committee Chairs**
  - » John Rundquist City of Helena Public Works
  - » Dave Knoepke, City of Helena, Engineering Department
- **Alcohol/Drug Impaired Crashes: Sgt. Jay Nelson, MT Highway Patrol**
- **Occupant Protection/Safety Belt Use: Tracie Kiesel, Tri-County Buckle Up Coordinator**
- **Bicycle/Pedestrian Crashes: Dave Knoepke, City of Helena Engineer**

# CTSP Support Team

- **Montana Department of Transportation**
  - » **Carol Strizich**
  - » **Pam Langve-Davis**
- **Consultant Team from Cambridge Systematics, Inc.**
  - » **Audrey Wennink – Senior Analyst**



# 4Es of Transportation Safety



# Transportation Safety Advisory Committee Membership

- **City of Helena Public Works**
- **Helena Police Department**
- **Lewis & Clark County Sheriff's Office**
- **Montana Highway Patrol**
- **Helena Fire Department**
- **Helena School District**
- **Non-Motorized Transportation Advisory Committee (NMTAC)**
- **Helena College**
- **City of Helena Community Development**
- **Tri-County Buckle Up MT**
- **Lewis & Clark County Public Works**
- **Lewis & Clark County Community Development**
- **Montana Department of Transportation**
- **Lewis & Clark Rural Fire District**
- **BikeWalk Montana**



# Purpose of Transportation Safety Plan

- **Target fatal and injury crashes based on locally identified safety problems**
- **Devise safety strategies that can be carried out at the local level**
- **Customize strategies based on local priorities, organizational structures, programs, leadership**

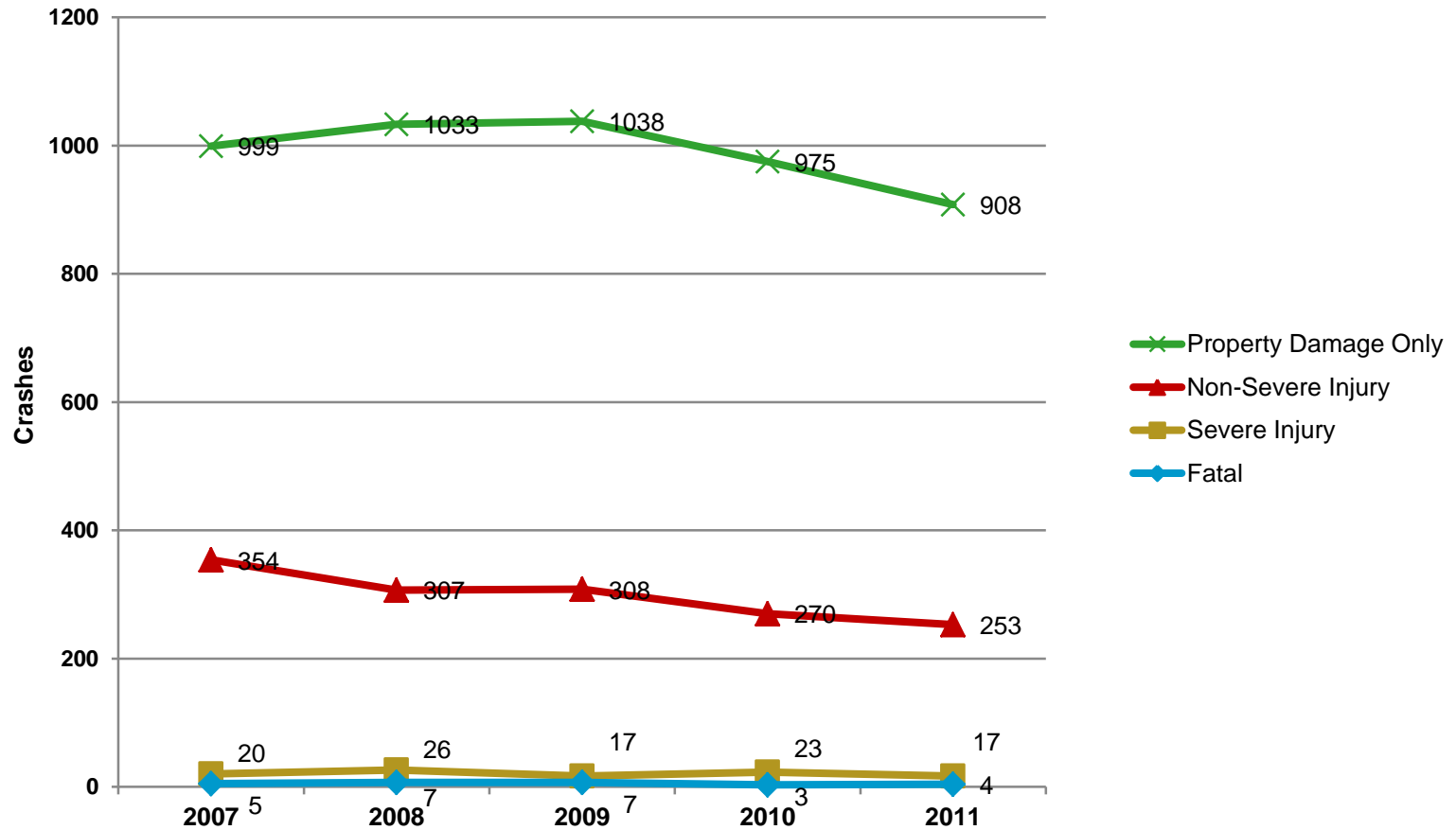




## TSAC Mission Statement

To provide guidance on the development of the Community Transportation Safety Plan and participate in and provide direction on plan implementation.

# Greater Helena Transportation Safety Problem Crashes - 2007-2011



Source: MDT-Safety Management System, 2013

# Greater Helena Area Annual Crash Averages

## Urban Area Annual Crashes (2007-2011)

Fatal Crashes	Incapacitating Injury Crashes	Non-Severe Injury Crashes	Property Damage Only Crashes	Total Crashes
5	21	298	991	1,315

## Urban Area Annual Fatalities/Injuries (2007-2011)

Fatalities	Incapacitating Injuries	Non-Severe Injuries
6	24	367

*Source: MDT-Safety Management System, 2013*

# Vision and Goal

## *Vision*

**The Greater Helena Area will have the safest motorized and non-motorized transportation system in Montana**

## *Goal*

**Zero Fatalities**

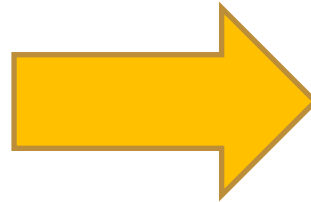
# Interim Goal

*Reduce crashes in the Greater Helena Area by 25 percent by 2018*

1,315 Crashes

Five year annual average: 2007-2011

- 5 Fatal Crashes
- 21 Incapacitating Injury Crashes
- 298 Non Severe Injury Crashes
- 991 Property-Damage Only Crashes

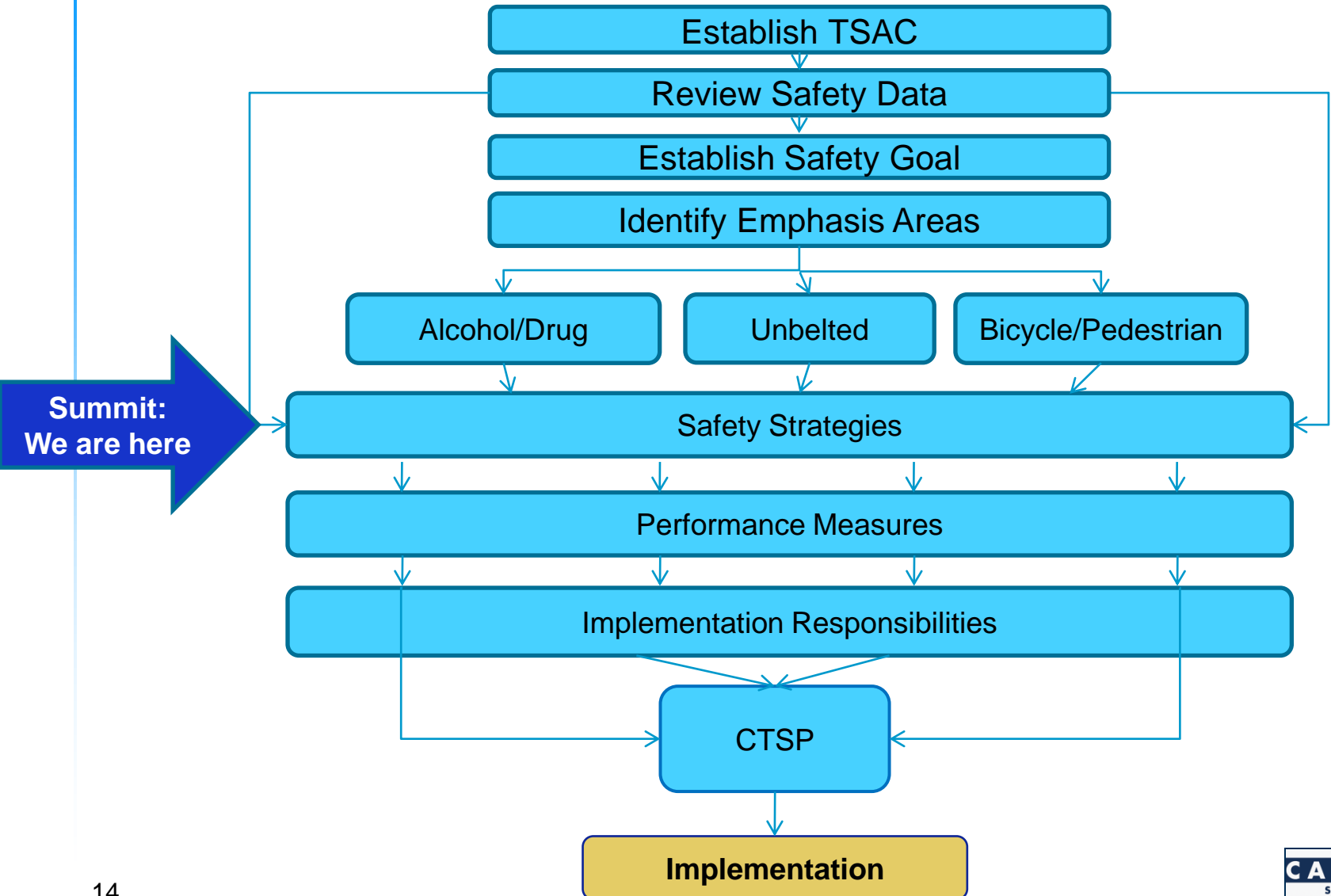


986 Crashes

Five year annual average: 2013-2017

- <5 Fatal Crashes
- <21 Incapacitating Injury Crashes
- <298 Non Severe Injury Crashes
- <991 Property Damage Only Crashes

# The CTSP Process



# What is an “Emphasis Area?”

- A priority safety issue for the Greater Helena Area based on data and community input
- A safety issue for which community focus and resources will be applied
- Can change over time – to reflect progress and changing conditions or needs
- Selected based on data and community input

## Greater Helena Area Emphasis Areas

- Alcohol/Drug Impaired Crashes
- Seatbelt Use/ Occupant Protection
- Bicycle and Pedestrian Crashes

# Emphasis Area Crashes

## 2007-2011



- 27 severe impaired crashes
- 131 non-severe injury impaired crashes



- 68 people unbelted in severe injury crashes
- 211 people unbelted in non-severe injury crashes

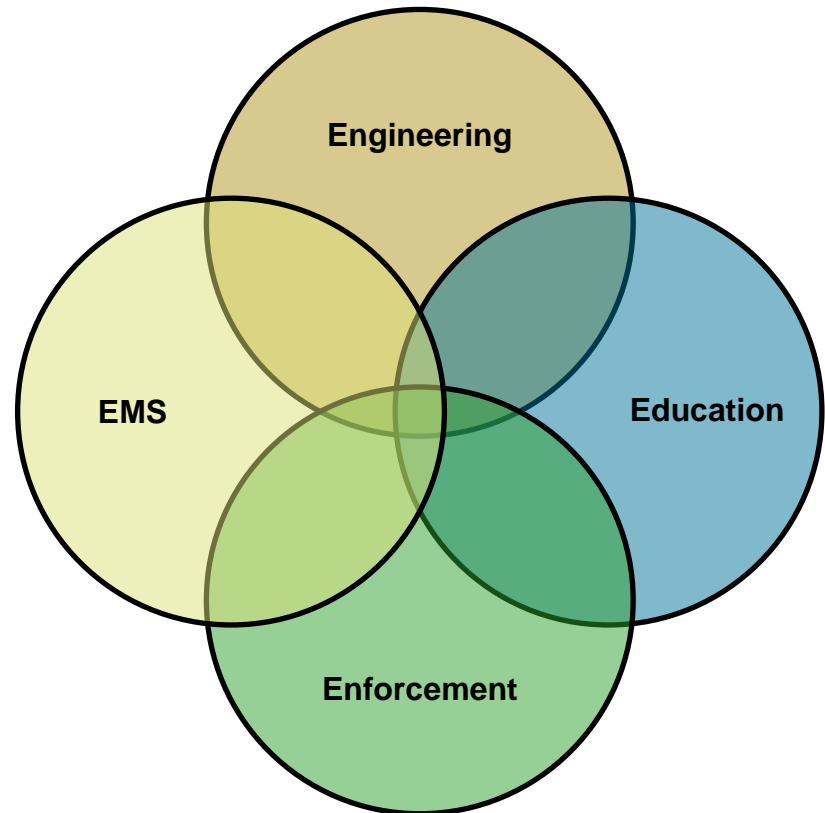


- 7 severe bicycle crashes; 41 non severe bicycle crashes
- 20 severe pedestrian crashes; 38 non-severe pedestrian crashes



# Greater Helena Area CTSP Strategies

- Consider the 4Es
- How can we maximize resources?
- How can we best work together?



# Selection of Emphasis Areas Strategies

- **Consider what is already being done – what can be done better?**
- **What strategies are working elsewhere? What will work in the *Greater Helena Area*?**
- **Feasibility is Key**
  - » **What can you realistically accomplish in the next 5 years?**
  - » **Do you have or can we obtain the necessary technical expertise?**
  - » **Will you have stakeholder support?**
  - » **Will you have public support?**

# Breakout Discussions

- Drug/Alcohol Impaired Crashes
- Seat Belt Use/ Occupant Protection
- Bicycle & Pedestrian Crashes



# Objectives of Emphasis Area Group Discussions

- Review crash data relevant to the three CTSP emphasis areas
- Discuss strategies to and reduce crashes in the 3 focus areas in the Greater Helena Area
- Reach consensus on the most feasible and effective strategies
- Discuss responsibilities for implementing strategies



# Breakout Session Activities

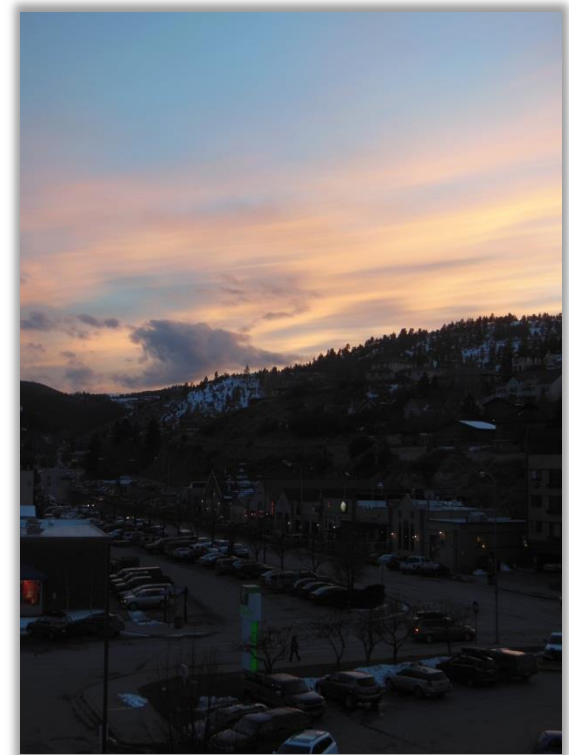
- Review Data on Emphasis Area
- Review Existing Greater Helena Area Safety Programs
- Review Potential Proven Safety Strategies
- Identify Strategies for the Plan, including:
  - » Action steps
  - » Stakeholders
  - » Resources

# Report Out



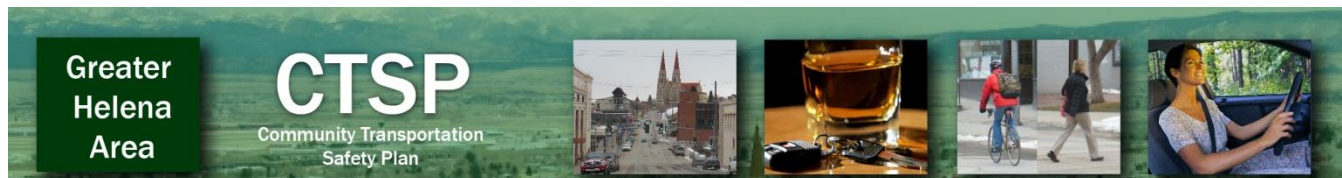
# CTSP Development Next Steps and Schedule

- **Draft safety strategies for Community Transportation Safety Plan based on Summit input: June 2013**
- **Present draft CTSP to TSAC for review and comment: July 2013**
- **Finalize Plan and Present to City-County Commissioners**



# CTSP Implementation/Results Tracking

- **Strategies defined today will form Community Transportation Safety Plan strategies**
- **Emphasis Area Teams will implement CTSP strategies**
- **TSAC Point of Contact and Emphasis Area Chairs will coordinate regular team meetings**
- **Track and report safety performance measures, e.g.**
  - » **Number of implementation meetings/activities**
  - » **Annual number of severe injury, non-severe injury, and overall crashes in the Greater Helena Area**
  - » **Number of injury crashes in each Emphasis Area**





Thank you --  
buckle up and  
drive home  
safely!

