



SEPT 10, 2020

5:30 PM

VIA ZOOM

FOYS LAKE ROAD/US 93 ALT INTERSECTION MDT PROJECT

VIRTUAL OPEN HOUSE



VISION ZERO
zero deaths · zero serious injuries
MONTANA DEPARTMENT
OF TRANSPORTATION



PROJECT OVERVIEW

- The current roundabout on Foys Lake Road will be replaced with a full interchange.



- 1** Completed Kalispell Bypass
- 2** Kalispell Bypass - Foys Lake Road Interchange
- 3** Kalispell Bypass - US 93 to Airport Road



ROUNDAABOUTS

- The roundabouts will allow both residents and recreationalists to safely use Foys Lake Road while also providing access to the Bypass.



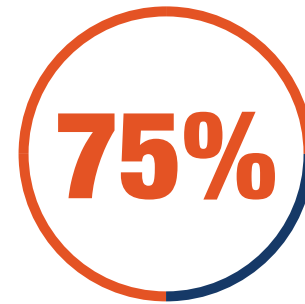


ROUNDABOUTS: THE SAFEST OPTION

- The Insurance Institute for Highway Safety found that on average, roundabouts reduce fatalities by 90%, serious injury crashes by 75%, and all kinds of crashes by 37%.



**FATALITY
REDUCTION**

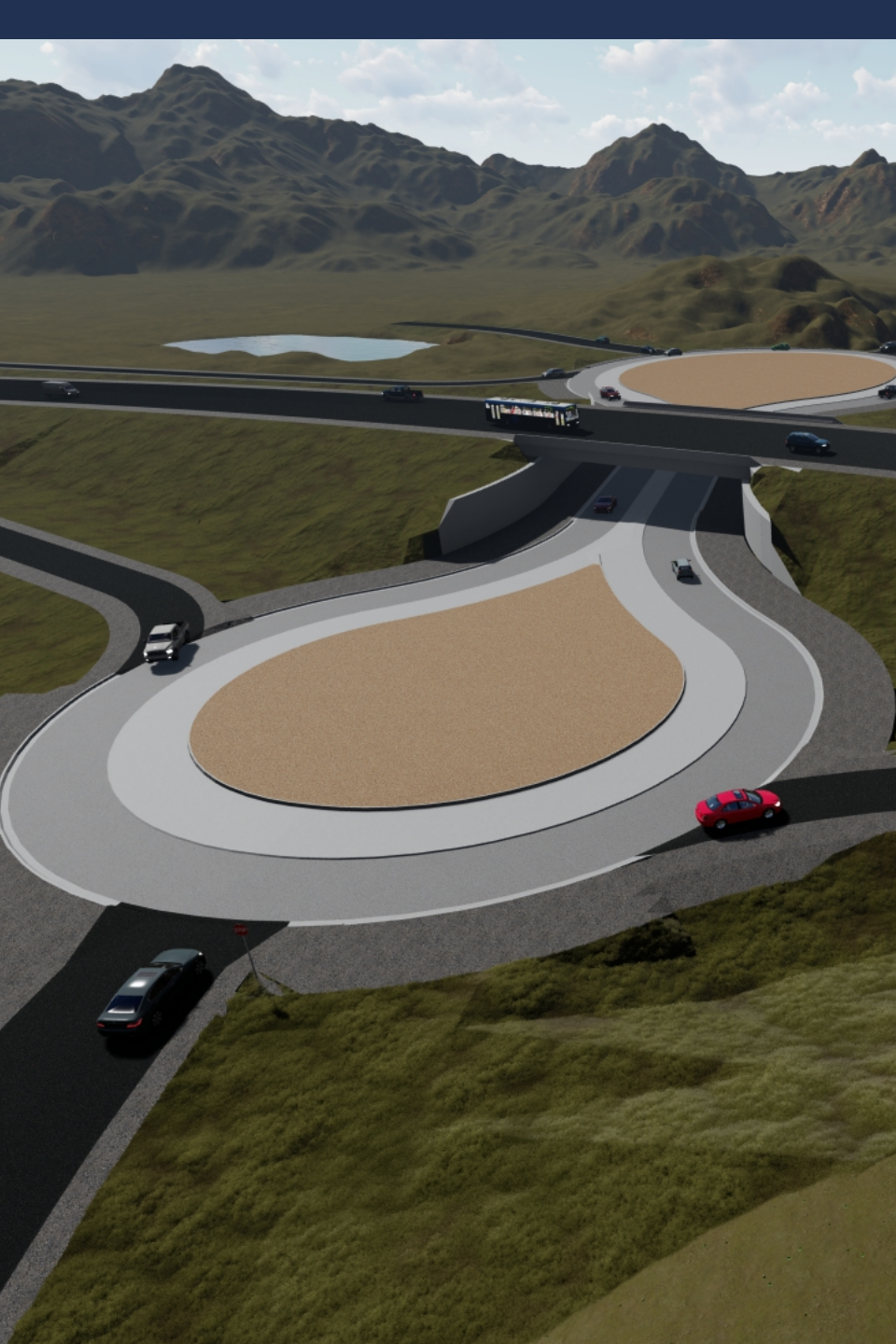


**SERIOUS INJURY
CRASHES**



**ALL KINDS OF
CRASHES**





ROUNDABOUTS: SAFETY

- By splitting traffic between the added roundabouts and the Bypass, travelers will see significantly reduced congestion and safer transition points on all accounts.




PHASE 1

TRAFFIC

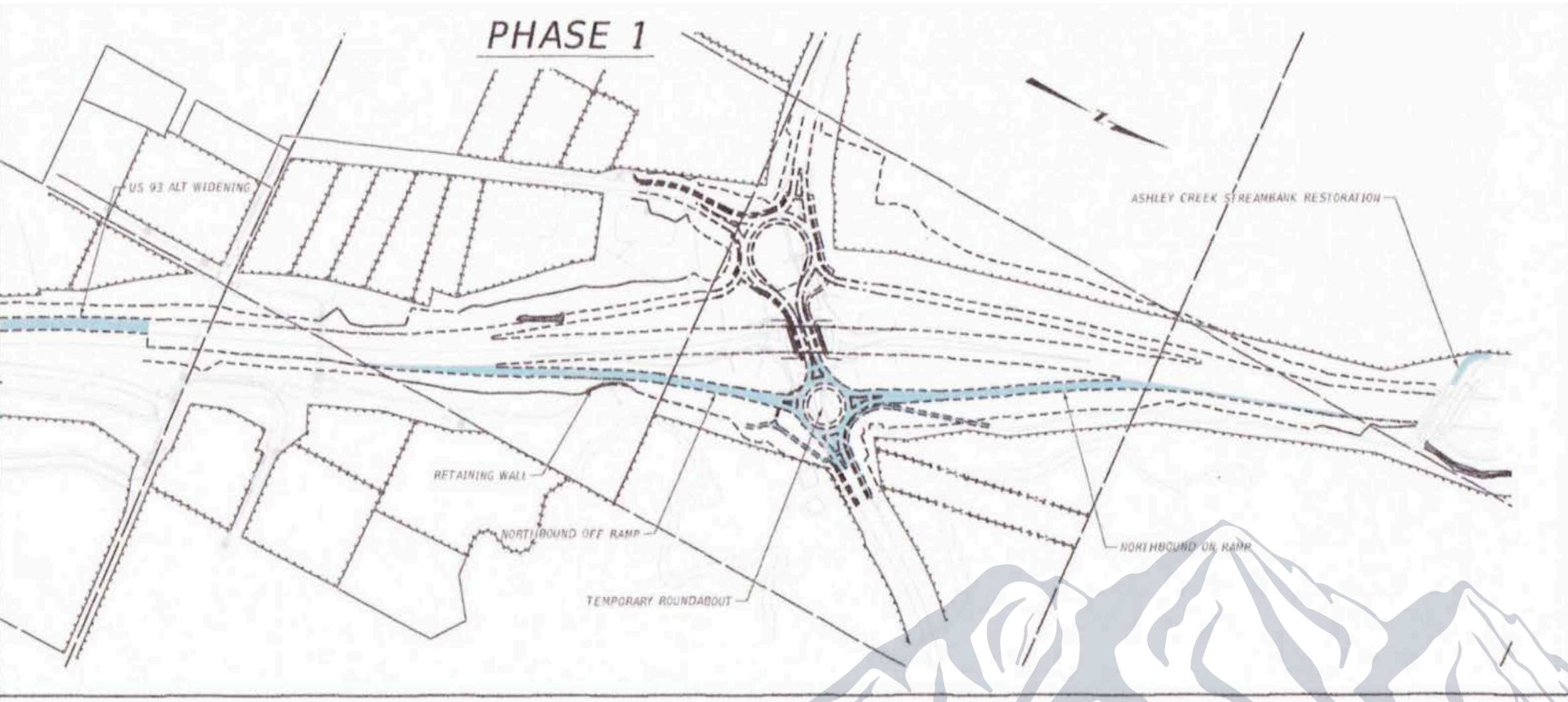
1. Place advance warning signs 10 days prior to construction activity.
2. Maintain traffic on existing roadway alignments.
3. Utilize single-lane closures and weekend closures in Foys Lake Road to construct temporary roundabout.
4. Maintain shared-use path access throughout entire phase.
5. Maintain access to residential and commercial property at all times.

CONSTRUCTION

1. Place erosion control devices prior to construction.
 2. Relocation of utilities required for overhead power and underground gas.
 3. Relocate City of Kalispell water main and sanitary sewer force main.
 4. Construct temporary shared-use path and sidewalk.
 5. Complete Ashley Creek streambank rehabilitation.
 6. Construct precast gravity block retaining wall.
 7. Construct northbound off and on ramps.
 8. Construct temporary roundabout in final configuration at the intersection of northbound ramps and Foys Lake Road.
 9. Install traffic control for temporary roundabout.
 10. New drainage at Meridian roundabout and ramps.
 11. Construct US 93 widening roadway south of Foys Lake Road.
 12. Construct roadway sections on Bypass and southbound ramps.
- 

PHASE 1

TRAFFIC PLAN



PHASE 2

TRAFFIC

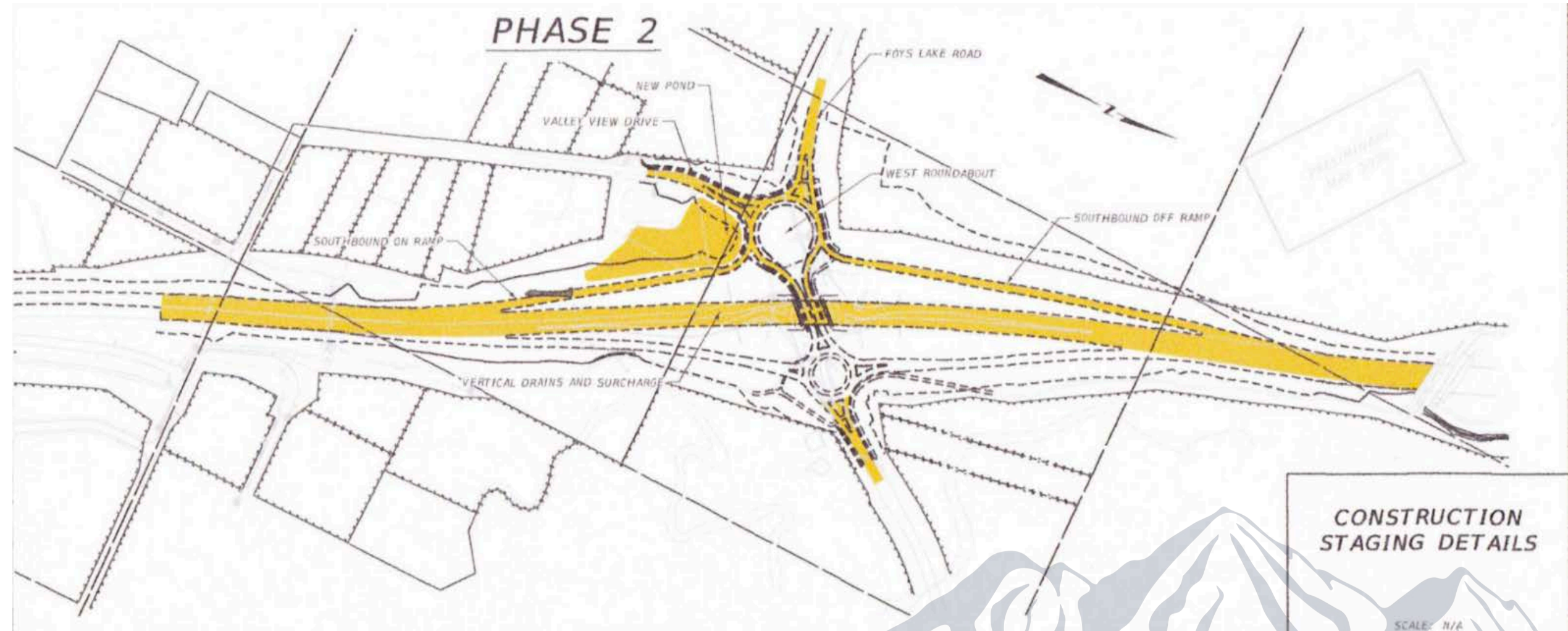
1. Bypass traffic detoured onto northbound ramps and temporary roundabout.
2. Utilize single lane and weekend closures for Foy's Lake road reconstruction.
3. Maintain shared-use path access throughout entire phase.
4. Maintain access to residential and commercial property at all times.

CONSTRUCTION

1. Maintain and expand erosion control devices as required.
2. Construct new storm water treatment pond in SW quadrant.
3. Construct remaining elements of storm sewer system, Foy's Lake road reconstruction, southbound ramp embankments, and Valley View Drive.
4. Construct MSE walls for new bridge on US 93 over Foy's Lake road and bridge embankment.
5. Install vertical drains, embankment, surcharge, and start settlement on US 93 near new bridge and SB on ramp.



PHASE 2 TRAFFIC PLAN



12.7 MILLION IN FEDERAL BUILDING GRANT FUNDING



MDT's NATIONAL HIGHWAYS
FUNDING PROGRAM

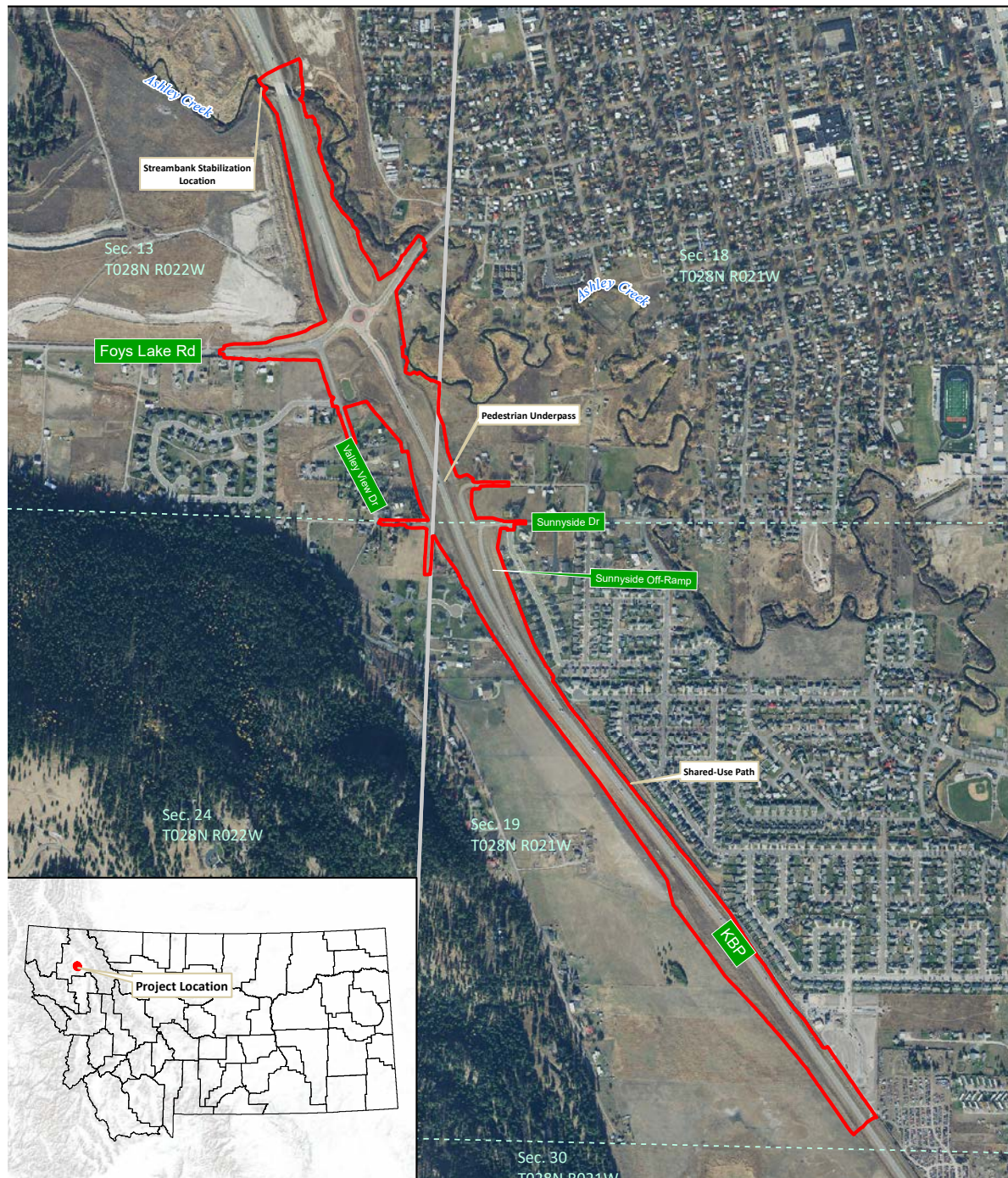
BUDGET & MAINTENANCE

- The interchange is anticipated to be a long-term solution for the growing Flathead Valley communities.
- This project was awarded to LHC/KLJ design-build team for \$14.7 million.
- The federal BUILD Grant will cover \$12.7 million of project expenditures.



ENVIRONMENTAL CONSIDERATIONS

- Review 2006 document
- New review of environmental impacts
 - Wetlands
 - Streambanks
 - Social (*traffic volumes, traffic noise, etc.*)
- Ashley Creek streambank
- Construction permits



VISION ZERO



VISION ZERO ★

zero deaths · zero serious injuries

**MONTANA DEPARTMENT
OF TRANSPORTATION**

- Vision Zero is a multipronged initiative with the ultimate goal of eliminating deaths and injuries on Montana highways.
- The proposed interchange and roundabout plan has been designed to facilitate safer travel for all.





PUBLIC INVOLVEMENT

- MDT is working on an accelerated schedule to complete this project in alignment with the BUILD grant restrictions and timeline.
- MDT welcomes any feedback on project plans.





EMAIL BECCA AT:

Becca@BigSkyPublicRelations.com



CALL THE PROJECT HOTLINE:

Monday-Friday from 9 a.m. to 5 p.m.
at (406) 207-4484



VISIT:

[https://www.mdt.mt.gov/pubinvolve/
kalispellbypass/](https://www.mdt.mt.gov/pubinvolve/kalispellbypass/)

STAY IN THE KNOW

- Please reach out with any questions.
- MDT welcomes any feedback on project plans.

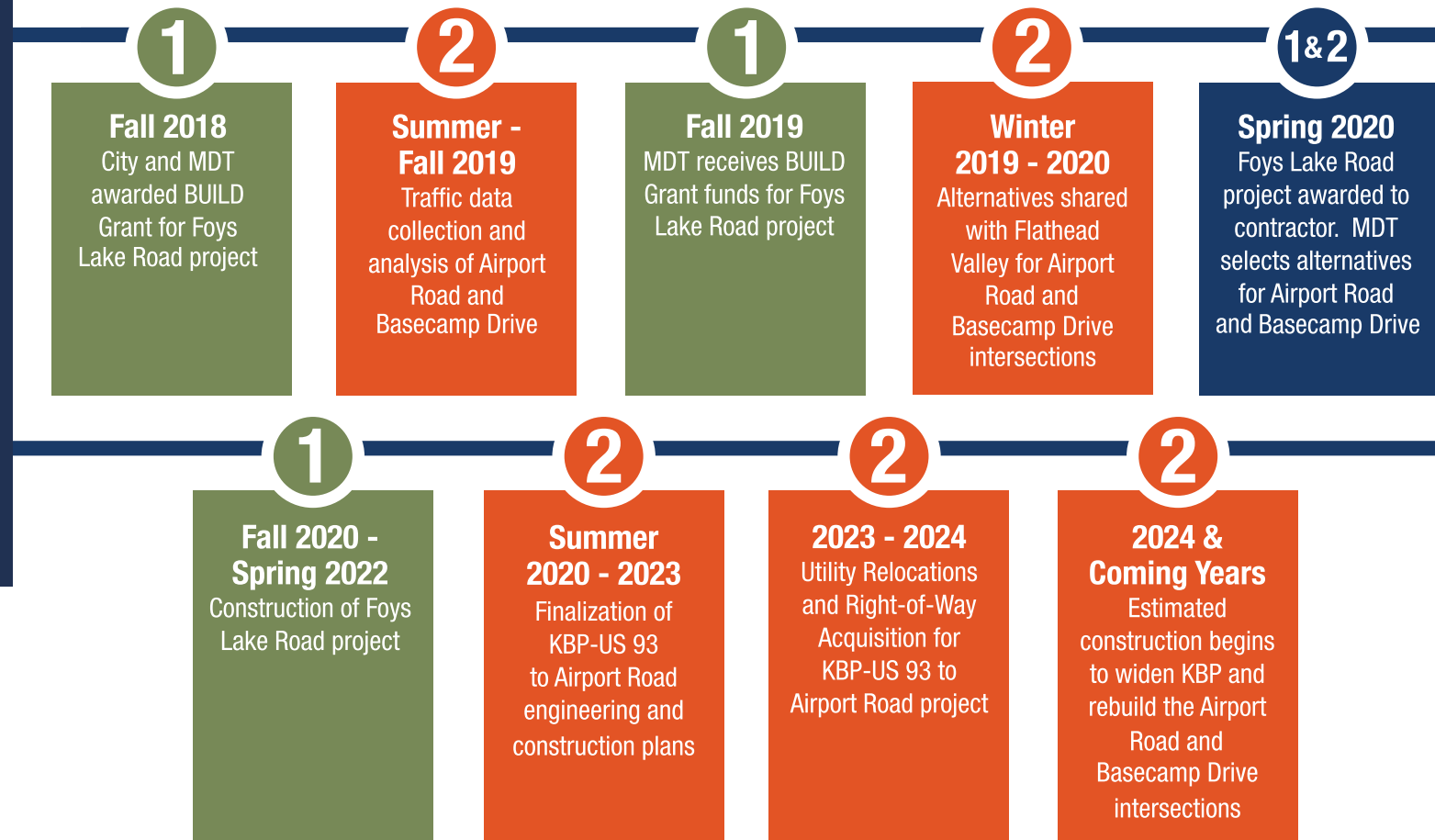


CONSTRUCTION WILL BEGIN IN **SPRING OF 2021**



RESIDENTS MAY EXPERIENCE SOME DRIVING DELAYS AS CONSTRUCTION IS OCCURRING DURING DAYLIGHT HOURS

CONSTRUCTION TIMELINE + ROUTE DETAILS



- Completed Kalispell Bypass
- 1** Kalispell Bypass - Foys Lake Road Interchange
- 2** Kalispell Bypass - US 93 to Airport Road