



Montana Department of Transportation
Russell Street – Broadway to Dakota Update
City Council Chambers
Wednesday, November 14 at 2:30 p.m.

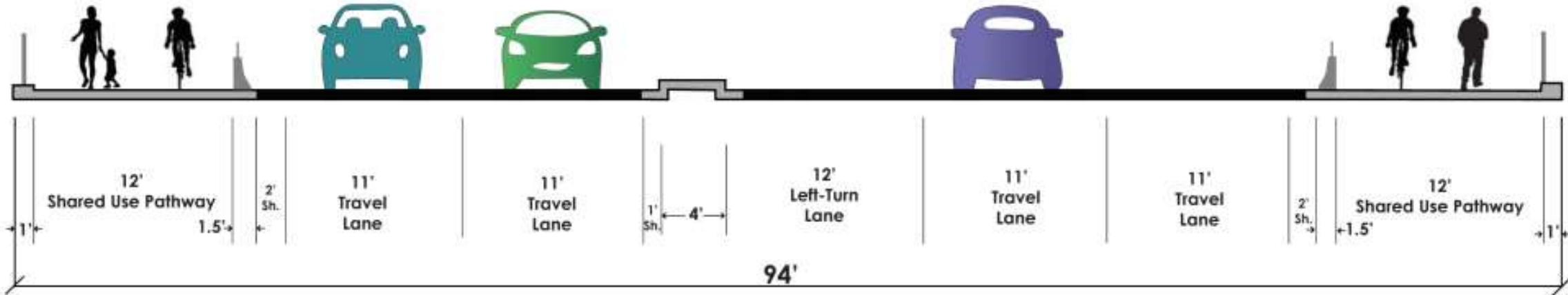
Russell Street Bridge Design



Russell Street Bridge rendering looking north



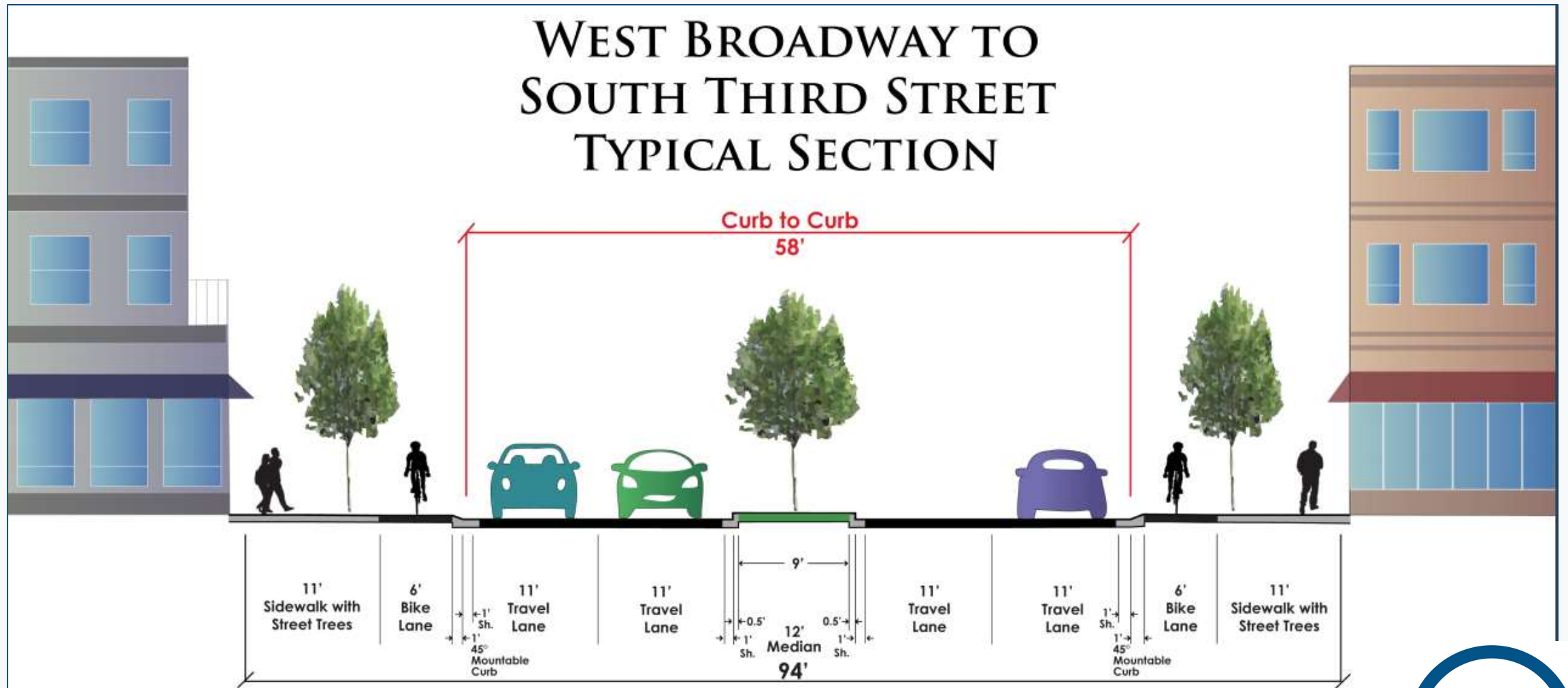
RUSSELL STREET BRIDGE TYPICAL SECTION



5/1/14



WEST BROADWAY TO SOUTH THIRD STREET TYPICAL SECTION



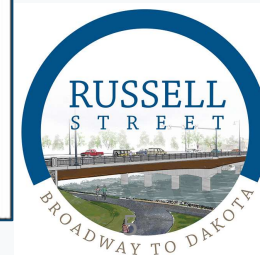


Russell Street
Bridge
rendering
looking north

Russell Street Bridge - Looking North

North Abutment - Custom Stained Rock Pattern

PRELIMINARY





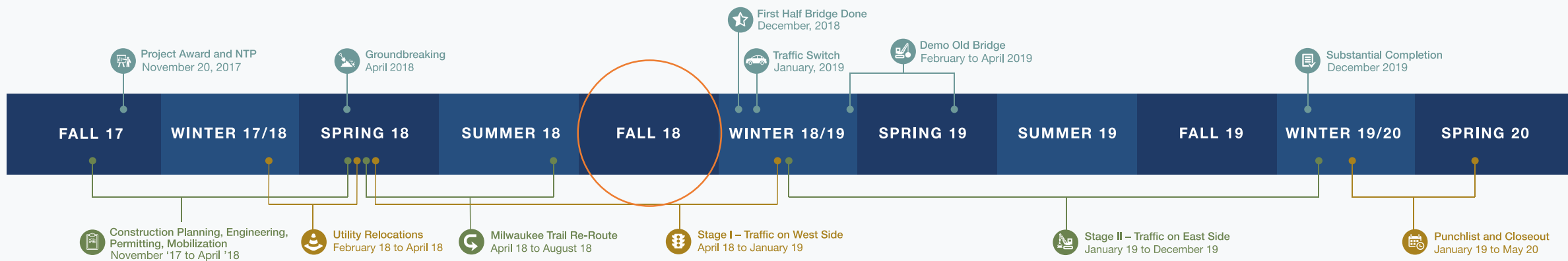
Milwaukee Trail underpass rendering looking east

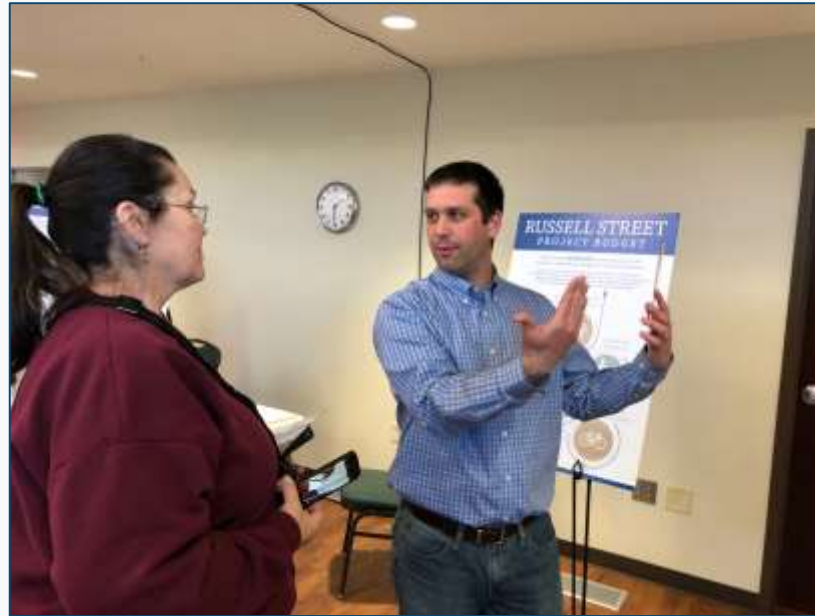
Russell Street - Milwaukee Trail - Looking East

PRELIMINARY



RUSSELL STREET TIMELINE





Open House held at the Salvation Army with more than 300 in attendance.

March 14, 2018

\$29 million Russell Street project underway; officials caution about delays

DAVID DYCKSON, david.dyckson@houserdaily.com | Mar 24, 2018

TRY 3 MONTHS FOR \$10



RECOMMENDED





Knife River begins shoring operations for the new Russell Street Bridge

April 2018





Roadway excavation
efforts in full swing

April 2018





Utility work near
Idaho Street

May 2018





Construction update
with local elected
officials

May 2018





Footing for retaining wall near Missoula Car and Truck

May 2018





Temporary work
bridge erected and
operational

June 2018





South bridge
abutment formwork

June 2018



Milwaukee Trail pedestrian underpass construction

July 2018







Sidewalk
construction and
median work begins

September 2018





Milwaukee Trail
construction on the
west side of Russell
Street

October 2018





Girder installation on Russell Street Bridge

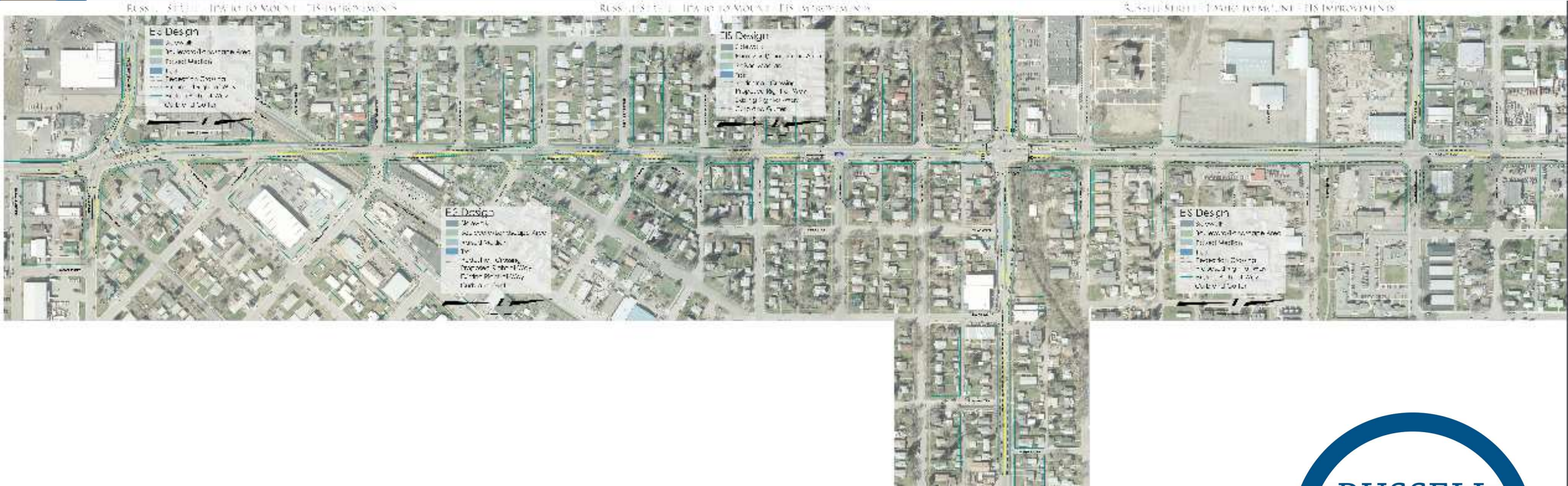
November 2018



Broadway to Dakota



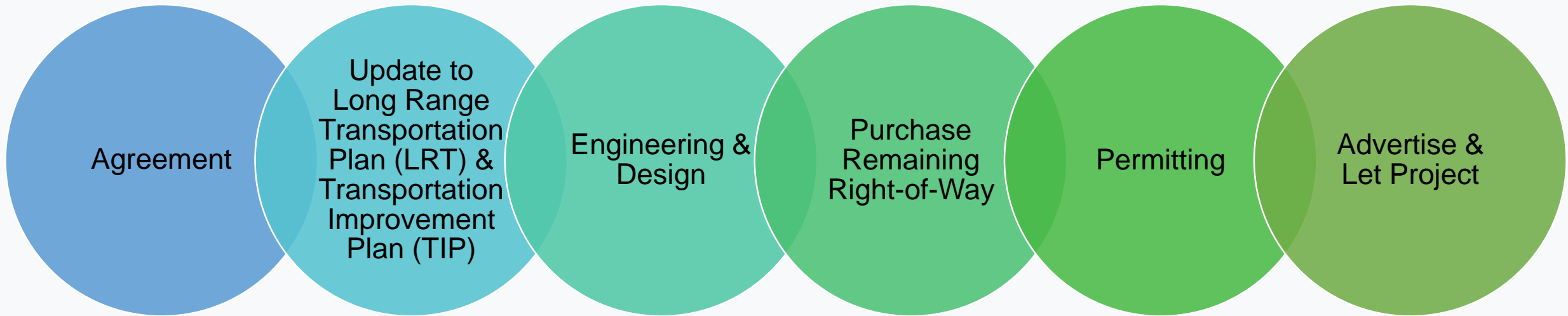
What's Next?



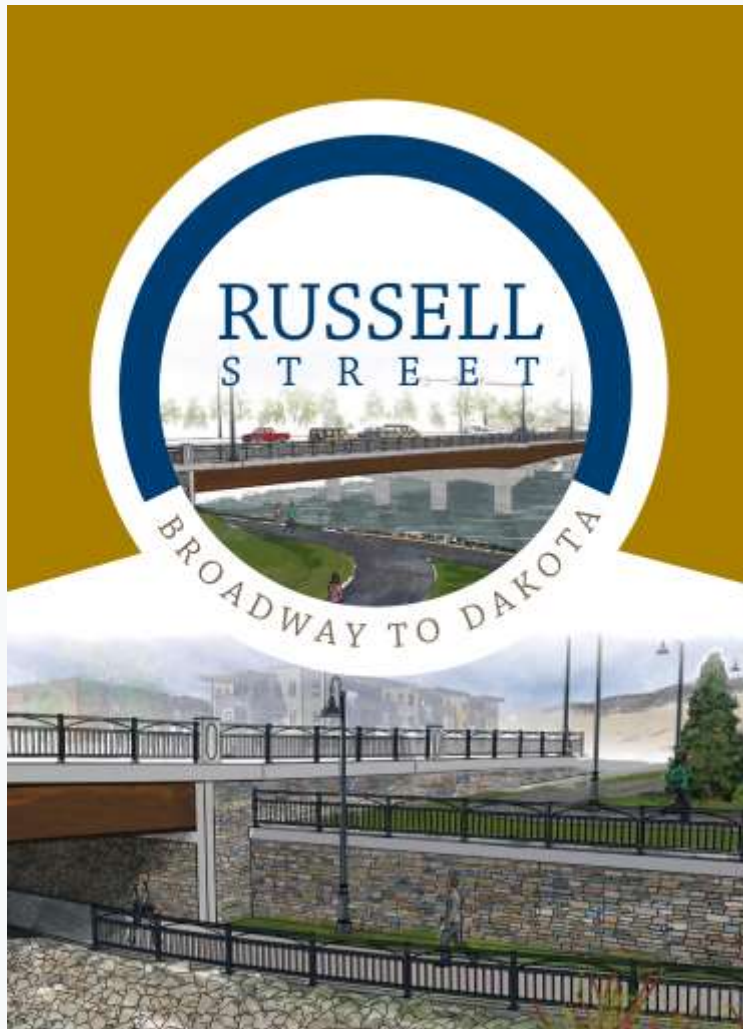
Idaho Street to Mount Street



Future Phases



Questions?



STAY IN THE KNOW



To subscribe for weekly emails contact
Katie at katie@bigskypublicrelations.com



To subscribe for SMS text updates,
text "Russell" to 41411



Call 406-207-4484 during business hours



Visit us online at
www.mdt.mt.gov/pubinvolve/russell



Listen for radio updates on these local channels:

- Mountain Broadcasting (KMSO) 102.5 FM
- The Blaze (KBAZ) 96.3 FM
- The Trail (KDTR) 103.3 FM
- Montana Public Radio 89.1 FM

*Msg & data rates may apply. 1 msg/week. Reply STOP to opt-out anytime. Reply HELP for help. Visit mdt.mt.gov/mdt/security_policy.shtml for terms and privacy policy.