

Z:\GIS\Public\DOT\Toston\MXD\StudyArea\8x11_20100201.mxd



- Toston Missouri River Crossing Corridor
 - Study Area Boundary
 - Land Outside of Study Area
 - Mile Post Reference Marker
 - Fishing Access Site
 - S-285
 - US-287
 - Off System Route
 - Railroad
- Land Ownership within Study Area**
- Private Land
 - State of Montana
 - Original Toston Townsite
 - Missouri River

Sources: Base map information from the Natural Resource Information System (<http://nr.is.mt.gov/>). NAIP color aerial photography from 2005. Cadastral (land ownership) data from 11/8/2009. On system and off system routes and mile reference markers provided by the Montana Department of Transportation.

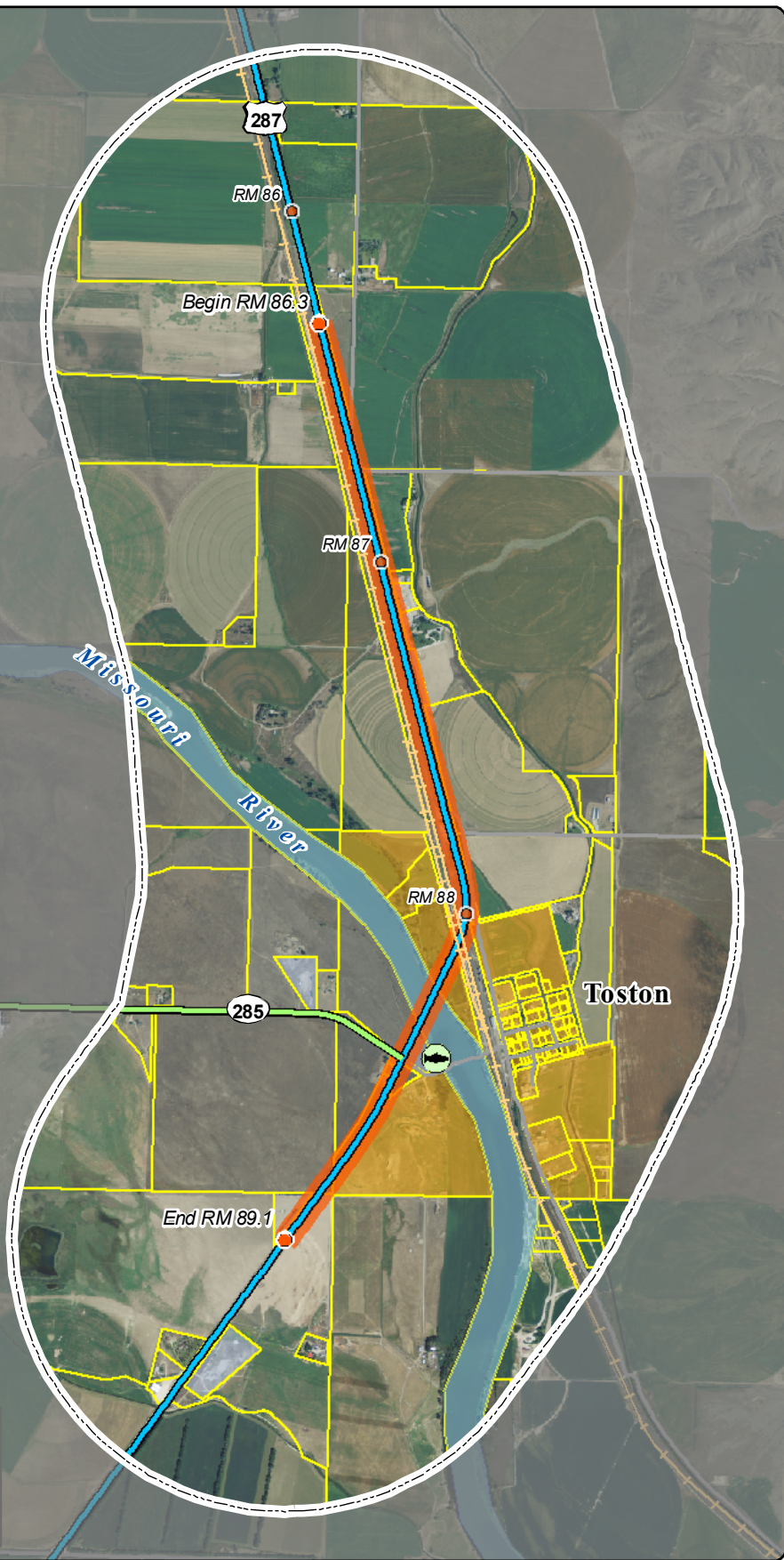


Figure 1-1
Project Study Area
Toston Missouri River Crossing Corridor



N

February 1, 2010
DRAFT

**Toston Missouri River
Corridor Planning Study**