



Toston Missouri River Corridor Planning Study

Public Informational Meeting No. 1

February 16, 2010



Purpose of this Meeting

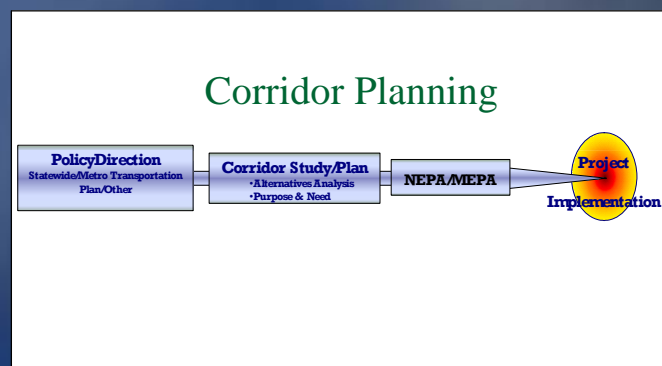
- ◆ Introduce the *Toston Missouri River Corridor Planning Study*
- ◆ Identify partners & stakeholders
- ◆ Explain public involvement process
- ◆ Describe initial work completed on study and scope of remaining tasks
- ◆ Solicit comments and concerns from the public in attendance
- ◆ Informal discussions after the presentation

Outline of Presentation

- ◆ **Goals and Purpose**
- ◆ **US 287 Corridor Overview**
- ◆ **Corridor Planning vs. NEPA/MEPA**
- ◆ **Stakeholders / Public Involvement / Schedule**
- ◆ **Existing Conditions in the Corridor**
- ◆ **Conclusions, Questions and Comments**

Goals and Purpose of Study

- ◆ Engage the public early!
- ◆ Identify constraints
- ◆ Identify short-range and long-range improvements
- ◆ Develop planning level cost estimates
- ◆ Develop information and data to be forwarded into the environmental process as a project moves forward from the study



US 287 Corridor Overview



Z:\gis\Public\DOT\Toston\MXD\StudyArea\Area8\1_20100201.mxd



- Toston Missouri River Crossing Corridor
 - Study Area Boundary
 - Land Outside of Study Area
 - Mile Post Reference Marker
 - Fishing Access Site
 - S-285
 - US-287
 - Off System Route
 - Railroad
- Land Ownership within Study Area**
- Private Land
 - State of Montana
 - Original Toston Townsite
 - Missouri River

Sources: Base map information from the Natural Resource Information System (<http://nris.mt.gov/>). NAIP color aerial photography from 2005. Cadastral (land ownership) data from 11/8/2009. On system and off system routes and mile reference markers provided by the Montana Department of Transportation.

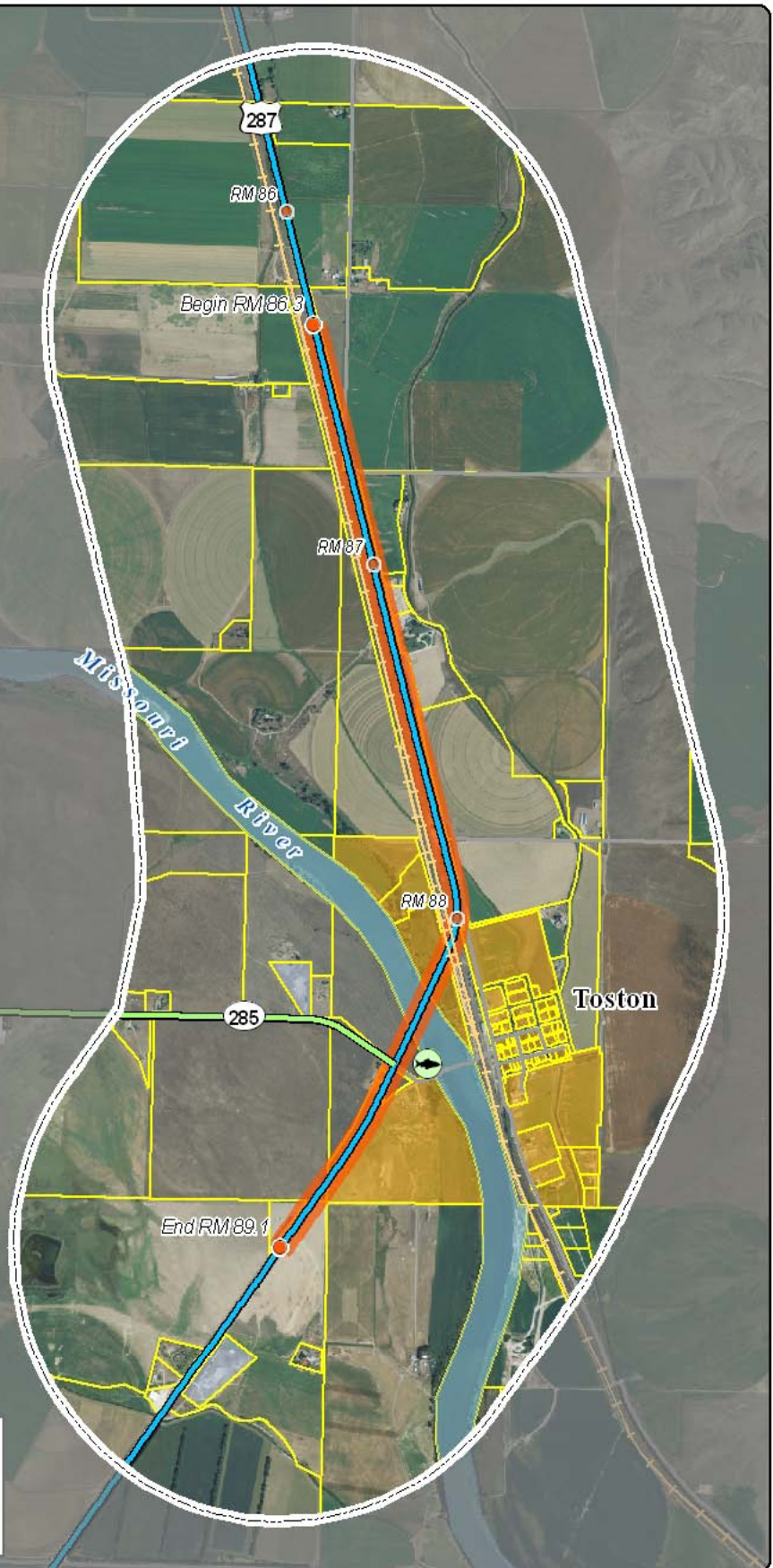


Figure 1-1
Project Study Area
Toston Missouri River Crossing Corridor



N
February 1, 2010
DRAFT

Toston Missouri River
Corridor Planning Study

Proposed Improvements for US 287 Within Corridor Study Area

- ◆ Toston – North
 - ◆ Pavement Preservation Project
- ◆ Toston – South
 - ◆ Reconstruction
- ◆ Townsend – South Passing Lanes
 - ◆ Reconstruction

Corridor Planning

VS.

NEPA/MEPA



What is a Corridor Planning Study?

- ◆ Pre-NEPA/MEPA Corridor Study
 - ◆ Not a NEPA/MEPA* Study or Environmental Study
 - ◆ Not a Preliminary or Final Design Project
 - ◆ Not a Construction or Maintenance Project
 - ◆ Not a Right of Way Acquisition project

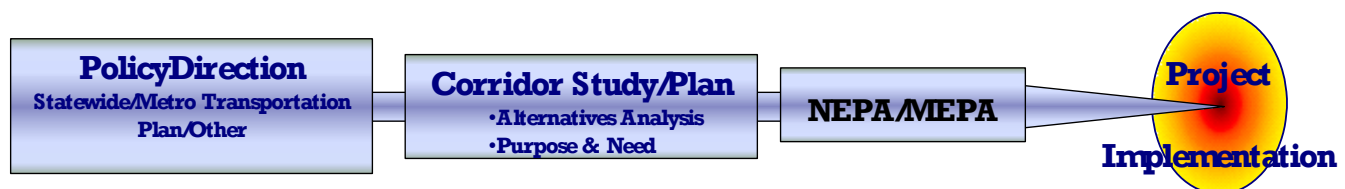
* The National Environmental Policy Act (NEPA) / Montana Environmental Policy Act (MEPA) is a policy for the protection of the natural environment and human health and welfare and is carried out by promoting efforts to prevent or eliminate damage to the environment.

Corridor Planning and Corridor Studies

Corridor Study

A detailed evaluation of an existing transportation system within a designated corridor including factors and issues affecting the system and recommendations for how the system should be changed to meet long-term transportation needs

Corridor Planning



Corridor Planning Approach

- ◆ A corridor is identified for analysis
- ◆ Corridor studies:
 - ◆ Are a “high level scan”
 - ◆ Define transportation issues/problems
 - ◆ Assesses a broad range of options
 - ◆ Considers social, economic, and environmental effects at an early stage
 - ◆ Provides a level of analysis that can support informed and sustainable decisions

Corridor Planning Approach

- ◆ **Corridor studies:**
 - ◆ **Identify cost-effective and feasible strategies**
 - ◆ **Consider community concerns and values**
 - ◆ **Fosters greater cooperation among agencies and other stakeholders**
 - ◆ **Extends the participation of these parties through the NEPA/MEPA process**
 - ◆ **Can streamline the overall process**

Corridor Planning Approach

- ◆ **Corridor planning:**
 - ◆ **Informs the NEPA/MEPA process**
 - Issues Identification
 - Purpose and Need
 - Alternatives Development
 - Technical Analyses
 - Information on Impacts
 - ◆ **Reduces the cost of environmental process**
 - ◆ **Speeds project delivery**

Corridor Planning Approach

- ◆ **Corridor planning:**
 - ◆ **Provides early and continuous involvement**
 - ◆ **Prioritize future transportation improvements based on financial feasibility**
 - ◆ **Identifies corridor management strategies**

Stakeholders

Public Involvement

Schedule



Stakeholders

- ◆ **Study Planning Team**
 - ◆ **MDT**
 - ◆ **FHWA**
 - ◆ **Broadwater County**
 - ◆ **Consultant**
- ◆ **Stakeholders**
 - ◆ **City of Townsend**
 - ◆ **Broadwater County**
 - ◆ **Montana Rail Link**
 - ◆ **BNSF Railway**
 - ◆ **Economic Development Corporations**

Stakeholders

◆ Stakeholders

- ◆ Townsend School District
- ◆ US 287 User's Group
- ◆ Water User's Group (Missouri River)
- ◆ Toston Irrigation District
- ◆ Pat Barnes Chapter of Trout Unlimited
- ◆ County Fire Departments and Emergency Medical Personnel
- ◆ County Sheriff and Montana State Highway Patrol
- ◆ Landowners in the Corridor
- ◆ Resource and Regulatory Agencies

Public Involvement Activities

- ◆ Three public informational meetings
- ◆ Presentations to Broadwater County Commission
- ◆ One-on-one outreach to select landowners and project stakeholders
- ◆ Other Outreach Efforts
 - ◆ Project newsletters
 - ◆ Website/Toll Free line
 - ◆ Informal meetings

Project Schedule

- ◆ **Project Kick-off Meeting Held
December 16, 2009**
- ◆ **Draft Corridor Study Document
(~ August 2010)**
- ◆ **Final Corridor Study Document
(~October 2010)**

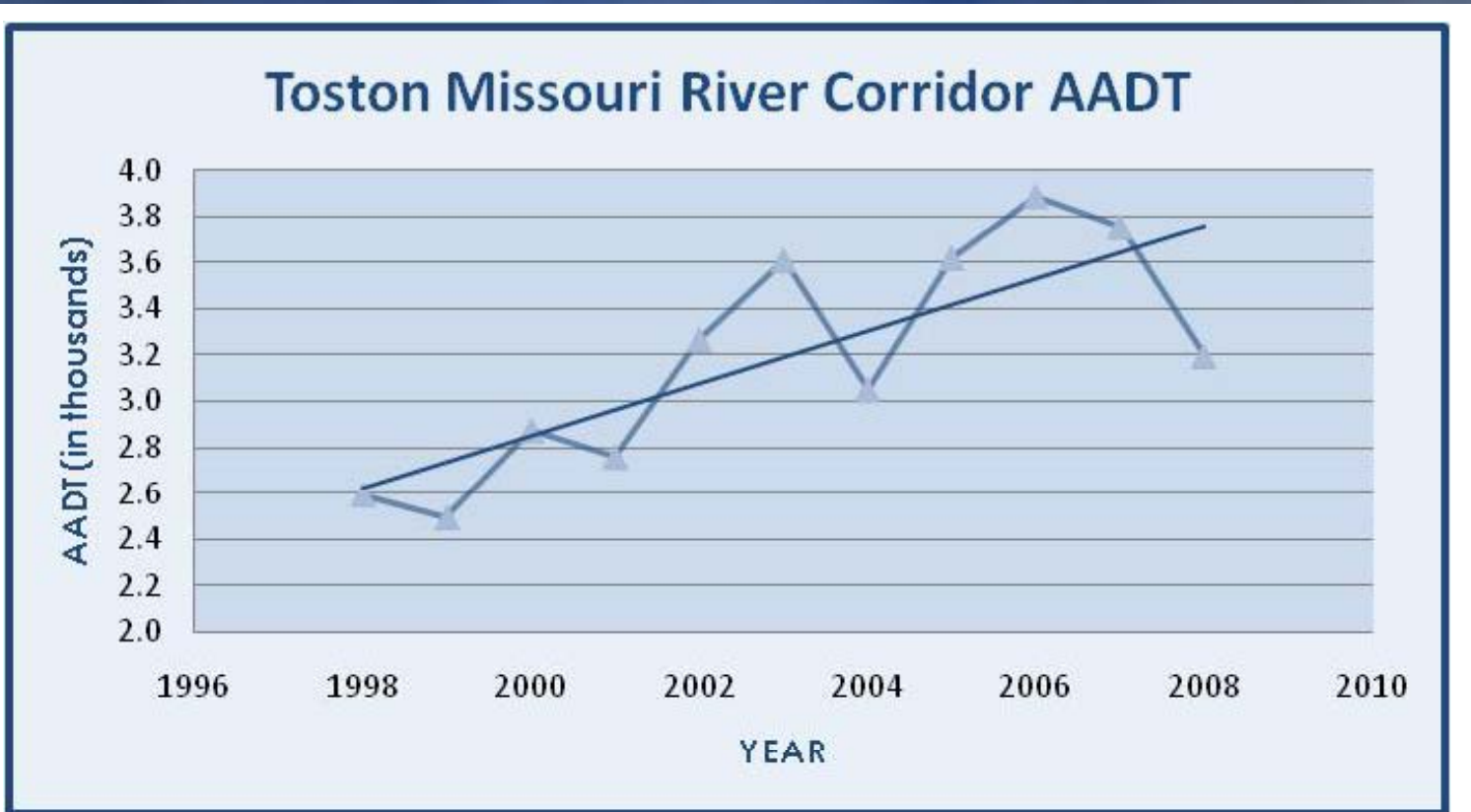
Existing Conditions in the Corridor



Corridor Overview

- ◆ **Rural Principal Arterial – Non-Interstate National Highway System (NHS) route**
- ◆ **Predominant route between major cities and towns**
- ◆ **Significance to interstates**
- ◆ **Functional classification determines design speed and associated highway geometrics**

Existing Traffic Volumes



Existing Crash Trends

- ◆ Safety issues are a significant concern
- ◆ A 10-year period of crash data was analyzed (01/01/1999 – 12/31/2008)
- ◆ 59 total crashes in the 10-year period
 - ◆ 26 occurred on bridge near MP 88
 - ◆ 45 were single vehicle crashes (76.3 %)
 - ◆ 10 involved wild animals (17.0 %)
 - ◆ 14 involved guardrail (23.7%)
- ◆ Rumble strips installed 2006

US Highway 287 Crash Statistics (MP 86.1 – 89.1)

(from January 1, 1999 – December 31, 2008)

Statewide Average	NINHS Routes	Study Area
All Vehicles Crash Rate	1.07	1.32
All Vehicles Severity Index	2.20	2.64
All Vehicles Severity Rate	2.36	4.28
Total Recorded Crashes		59

Source: MDT Traffic and Safety Bureau, 2009.

Railroad Bridge Crossing

- ◆ US 287 bridge crossing over the MRL track (MP 88.05)
- ◆ Existing bridge structure is ~386 feet in length
- ◆ Bridge rail was retrofitted with concrete barrier
- ◆ Horizontal separation and vertical clearance criteria exists
- ◆ Important for this study's conceptual improvement option(s)



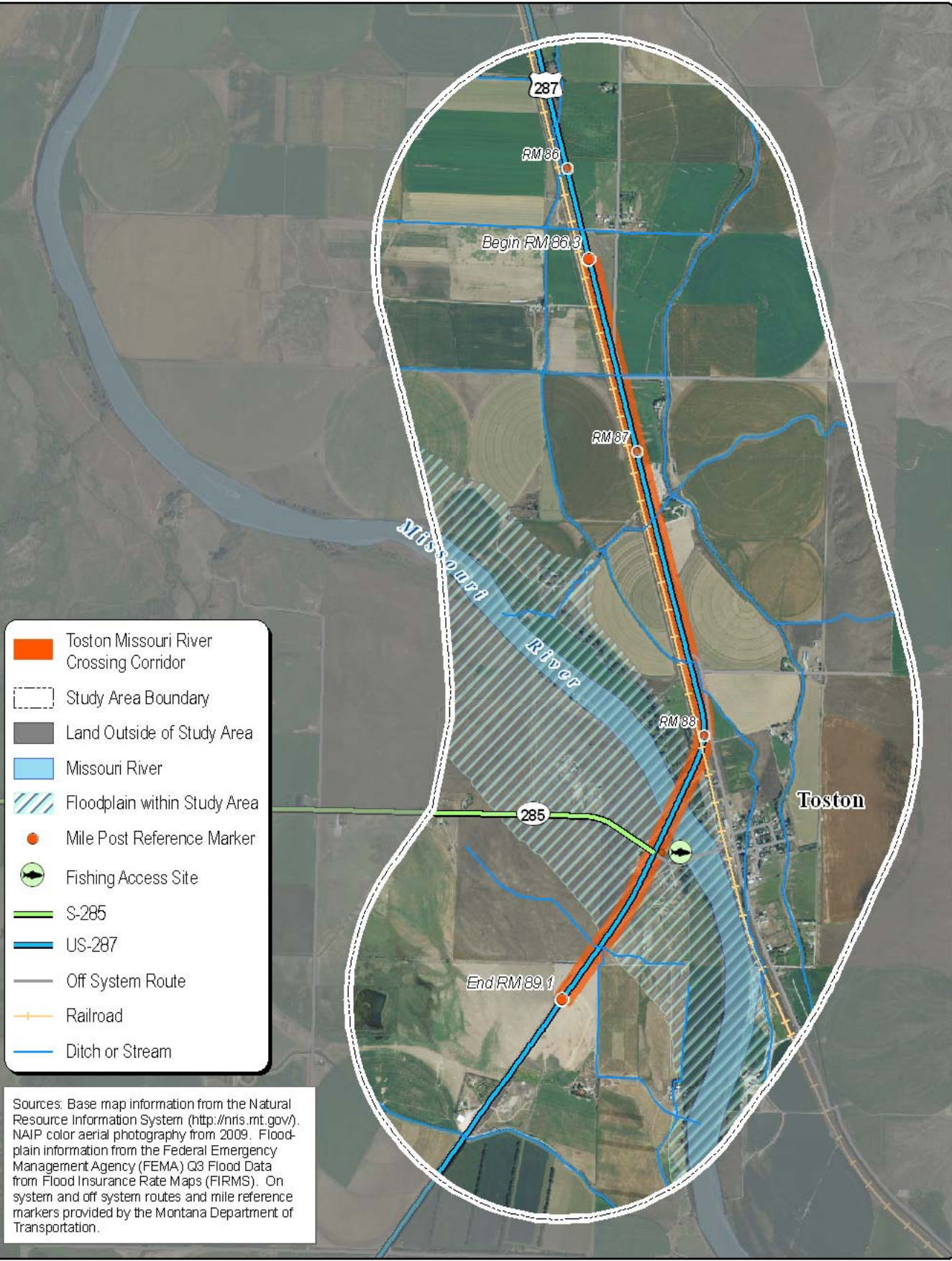
Missouri River Bridge Crossing

- ◆ Existing bridge structure is ~690 feet in length
- ◆ 28 feet in width
- ◆ Bridge rail was retrofitted with concrete barrier
- ◆ Continuous steel girders (main span)
- ◆ Concrete T-beam for end spans



Environmental Resources

- ◆ Surface Waters
- ◆ Floodplain
- ◆ Irrigation Systems
- ◆ Threatened and Endangered Species
- ◆ Species of Special Concern
- ◆ Wetlands
- ◆ Wildlife
- ◆ Fisheries
- ◆ Cultural Resources
- ◆ Recreation
- ◆ Prime Farmland
- ◆ Hazardous Waste Sites
- ◆ Noise
- ◆ Air Quality
- ◆ Noxious Weeds
- ◆ Geology
- ◆ Private Development




-  Toston Missouri River Crossing Corridor
-  Study Area Boundary
-  Land Outside of Study Area
-  Missouri River
-  Floodplain within Study Area
-  Mile Post Reference Marker
-  Fishing Access Site
-  S-285
-  US-287
-  Off System Route
-  Railroad
-  Ditch or Stream

Sources: Base map information from the Natural Resource Information System (<http://nris.mt.gov>). NAIP color aerial photography from 2009. Floodplain information from the Federal Emergency Management Agency (FEMA) Q3 Flood Data from Flood Insurance Rate Maps (FIRMS). On system and off system routes and mile reference markers provided by the Montana Department of Transportation.

Figure 3-1
Surface Waters and Floodplain
Toston Missouri River Crossing Corridor

0 2,000 4,000 6,000
Feet

N
February 1, 2010
DRAFT



Toston Missouri River
Corridor Planning Study

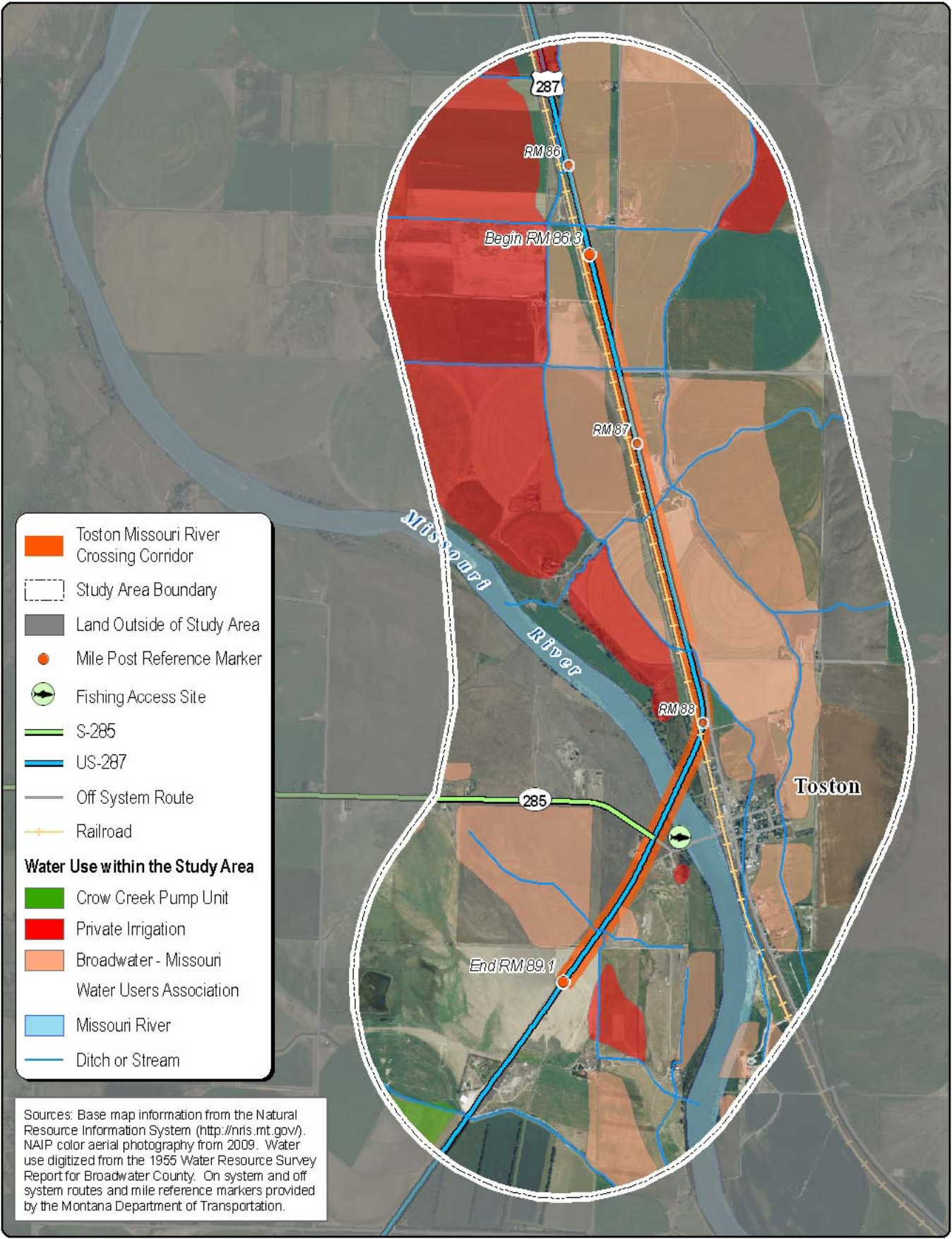



Figure 3-2
Irrigation Systems
Toston Missouri River Crossing Corridor




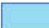






0 2,000 4,000 6,000
Feet

N
February 1, 2010
DRAFT



Toston Missouri River
Corridor Planning Study

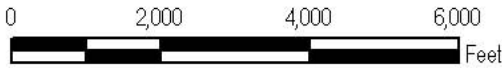
Site No.	Site Description	Status
24BW499	Broadwater - Missouri Canals	Eligible
24BW814	Toston Bridge	Registered
24BW818	Montana Rail Link (historically named Old Northern Pacific Railroad)	Eligible
24BW836	Big Springs Ditch	Eligible
24BW887	Radersburg Historic Mining District	Eligible

-  Toston Missouri River Crossing Corridor
-  Study Area Boundary
-  Land Outside of Study Area
-  Missouri River
-  Eligible Historic Site from SHPO
-  Registered Historic Site from SHPO
-  Fishing Access Site
-  Mile Post Reference Marker
-  S-285
-  US-287
-  Off System Route
-  Railroad


Sources: Base map information from the Natural Resource Information System (<http://nris.mt.gov/>). NAIP color aerial photography from 2009. Historic Sites from the State Historic Preservation Office (SHPO). On system and off system routes and mile reference markers provided by the Montana Department of Transportation.




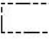






Figure 3-3
Cultural Resources and Recreation
Toston Missouri River Crossing Corridor



N
February 9, 2010
DRAFT



**Toston Missouri River
Corridor Planning Study**

-  Toston Missouri River Crossing Corridor
 -  Study Area Boundary
 -  Land Outside of Study Area
 -  Missouri River
 -  Mile Post Reference Marker
 -  Fishing Access Site
 -  S-285
 -  US-287
 -  Off System Route
 -  Railroad
- Habitat within Study Area**
-  Antelope Habitat
 -  Turkey Habitat
 -  Winter Mule Deer Range
 -  Winter Elk Range
 -  General Wildlife Habitat (See NOTE.)

Sources: Base map information from the Natural Resource Information System (<http://nris.mt.gov/>). NAIP color aerial photography from 2009. Habitat information from Fish, Wildlife and Parks. On system and off system routes and mile reference markers provided by the Montana Department of Transportation.

NOTE: The Missouri River is a Blue Ribbon Fishery from Toston Dam to Canyon Ferry. Black Bear, Blue Grouse, Gray Partridge, Mountain Lion, Mule Deer, Ruffed Grouse, Spruce Grouse, White Tailed Deer, Wolf and Pheasant are found throughout the study area.

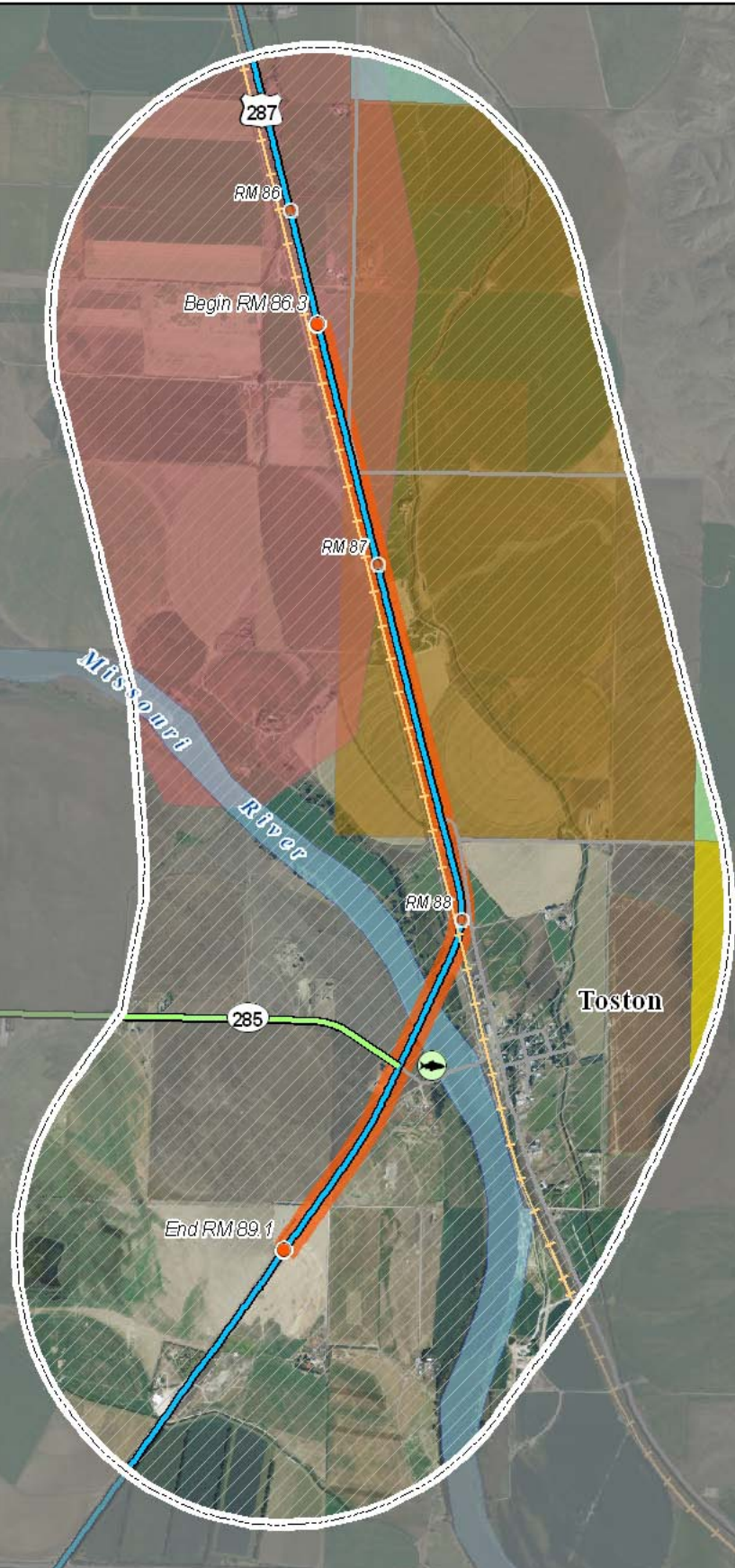



Figure 3-4
 Wildlife Corridor Areas
 Toston Missouri River Crossing Corridor

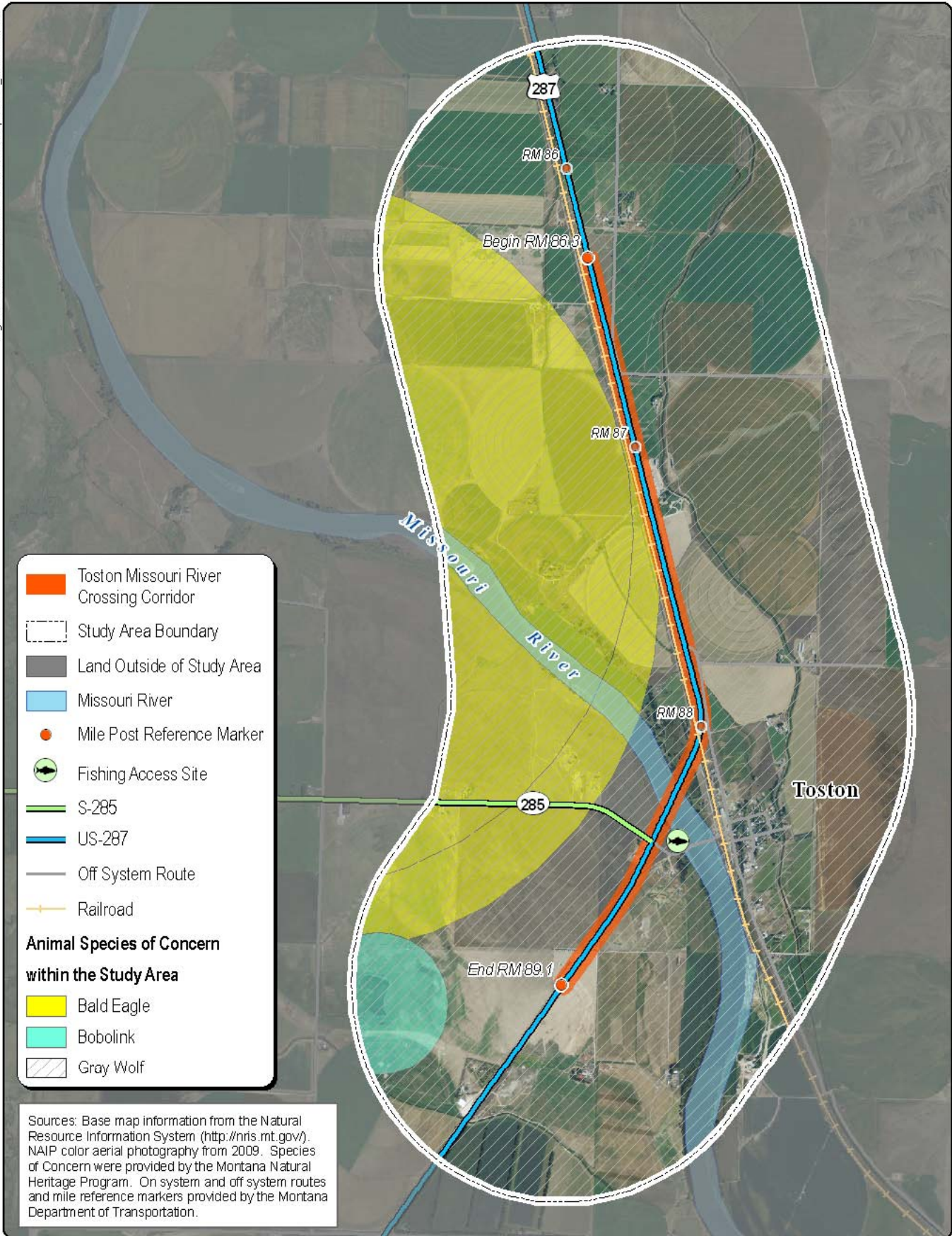


N

 February 1, 2010
DRAFT



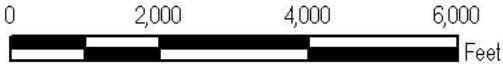
**Toston Missouri River
 Corridor Planning Study**



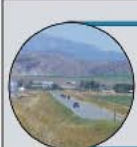
- Toston Missouri River Crossing Corridor
 - Study Area Boundary
 - Land Outside of Study Area
 - Missouri River
 - Mile Post Reference Marker
 - Fishing Access Site
 - S-285
 - US-287
 - Off System Route
 - Railroad
- Animal Species of Concern within the Study Area**
- Bald Eagle
 - Bobolink
 - Gray Wolf

Sources: Base map information from the Natural Resource Information System (<http://nris.mt.gov/>), NAIP color aerial photography from 2009. Species of Concern were provided by the Montana Natural Heritage Program. On system and off system routes and mile reference markers provided by the Montana Department of Transportation.




















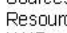
Figure 3-5
 Animal Species of Concern
 Toston Missouri River Crossing Corridor



February 1, 2010
DRAFT



**Toston Missouri River
 Corridor Planning Study**

-  Toston Missouri River Crossing Corridor
 -  Study Area Boundary
 -  Land Outside of Study Area
 -  Reference Marker Mile Post
 -  Fishing Access Site
 -  S-285
 -  US-287
 -  Off System Route
 -  Railroad
- Land Use within the Study Area**
-  Exempt Property
 -  Commercial Urban
 -  Residential Urban
 -  Vacant Land Urban
 -  Industrial Rural
 -  Commercial Rural
 -  Agricultural Rural
 -  Farmstead Rural
 -  Residential Rural
 -  Vacant Land Rural
 -  Missouri River

Sources: Base map information from the Natural Resource Information System (<http://nris.mt.gov/>). NAIP color aerial photography from 2009. Cadastral (land use) data from 11/8/2009. On system and off system routes and mile reference markers provided by the Montana Department of Transportation.




Figure 3-8
Land Use
 Toston Missouri River Crossing Corridor

0 2,000 4,000 6,000
 Feet

N

 February 1, 2010
DRAFT



**Toston Missouri River
 Corridor Planning Study**

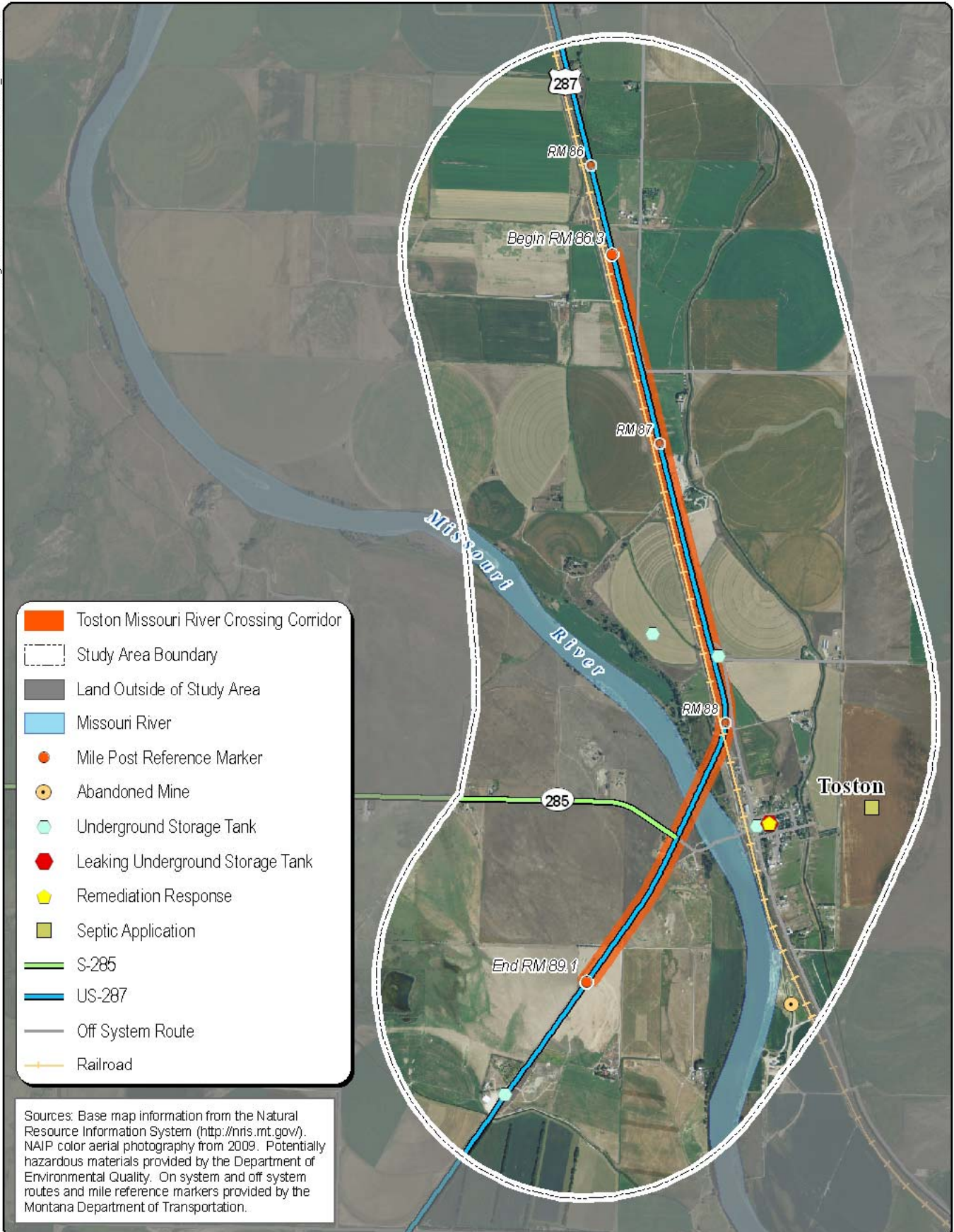


Figure 3-9
 Hazardous Material in the Project Study Area
 Toston Missouri River Crossing Corridor




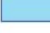



0 2,000 4,000 6,000
 Feet



February 1, 2010
DRAFT



Toston Missouri River
 Corridor Planning Study

-  Toston Missouri River Crossing Corridor
-  Study Area Boundary
-  Land Outside of Study Area
-  Missouri River
-  Prime Farmland (P)
-  Prime Farmland if Irrigated (PI)
-  Reference Marker Mile Post
-  S-285
-  US-287
-  Off System Route
-  Railroad

Sources: Base map information from the Natural Resource Information System (<http://nris.mt.gov/>). NAIP color aerial photography from 2009. Farmland from the Natural Resources Conservation Service (NRCS) 1:24,000 Scale Soil Survey Geographic (SSURGO) database. The following soils were identified by NRCS as being Prime Farmland (P) or Prime Farmland if Irrigated (PI):
 P BsA Brocko silt loam, 0 to 2 percent slopes
 PI Fa Fairdale silt loam
 PI Fb Fairdale-Lothair silty clays (if irrigated)
 P Ha Havre loam
 P Lt Lothair silty clay
 P MsA Mussie loam, 0 to 2 percent slopes
 P Te Thess silt loam
 P Vd Villy silty clay loam, drained
 On system and off system routes and mile reference markers provided by the Montana Department of Transportation.

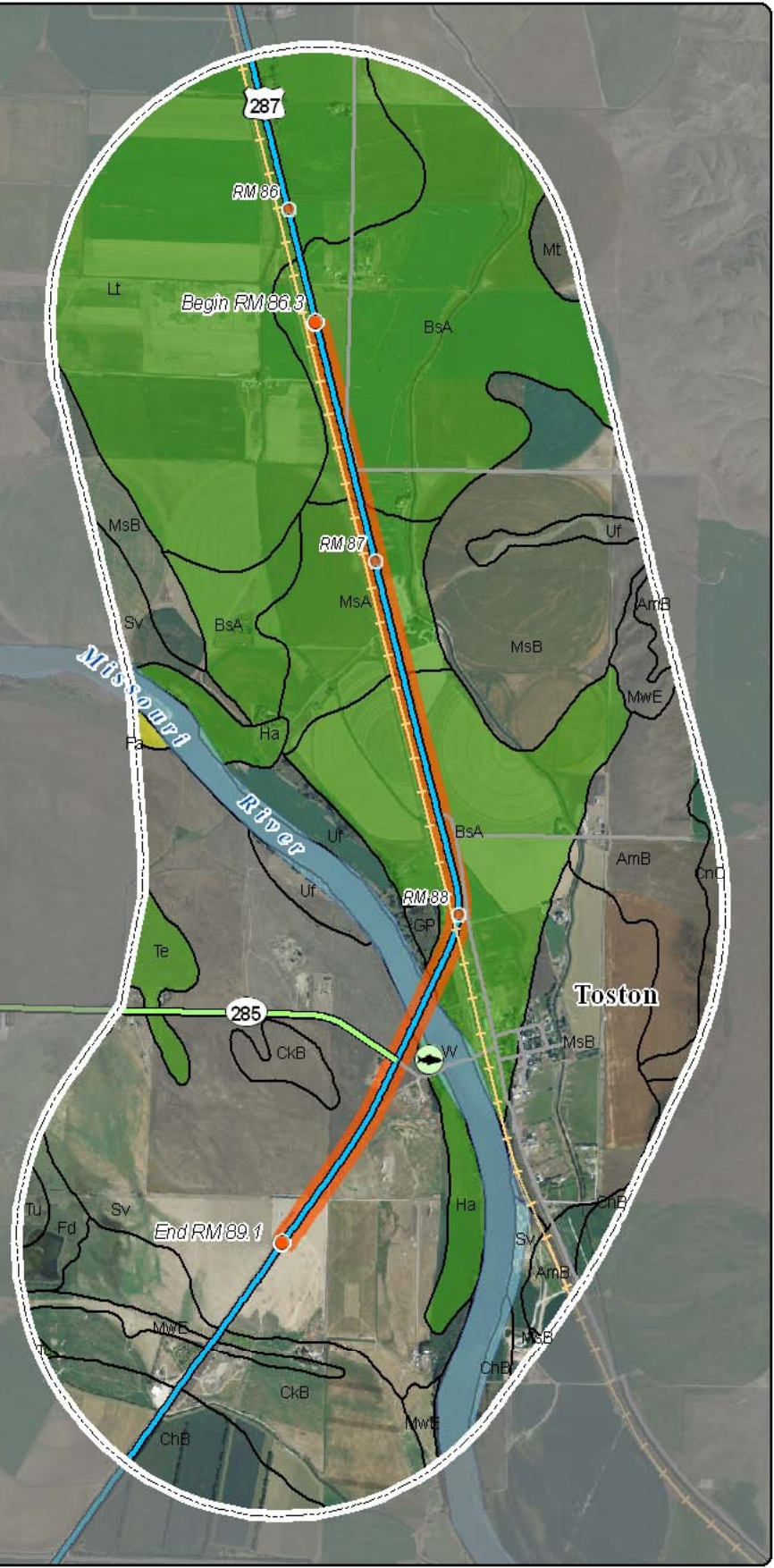



Figure 3-10
 Farmland and Soils
 Toston Missouri River Crossing Corridor




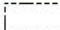
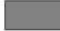





N

 February 1, 2010
DRAFT

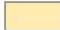

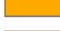




**Toston Missouri River
 Corridor Planning Study**

Toston Missouri River Crossing Corridor

-  Toston Missouri River Crossing Corridor
-  Study Area Boundary
-  Land Outside of Study Area
-  Reference Marker Mile Post
-  S-285
-  US-287
-  Off System Route
-  Railroad

Geology within the Study Area

-  Qa - Alluvium (Holocene)
-  Qoa - Old alluvium (Holocene & Pleistocene)
-  MiOGsc - Sedimentary rock (see NOTE)
-  Qt - Terrace gravel (Holocene & Pleistocene)
-  Open Water

Sources: Base map information from the Natural Resource Information System (<http://nris.mt.gov/>), NAIP color aerial photography from 2009. On system and off system routes and mile reference markers provided by the Montana Department of Transportation. Geology from the "Preliminary Geologic Map of the Townsend 30' x 60' Quadrangle, Montana" produced by Mitchell W. Reynolds and Theodore R. Brandt in 2006. Acquired via the Montana Bureau of Mines and Geology in cooperation with the U.S. Geological Survey (<http://www.mbm.gmt.mtech.edu/gmr/gmr-statemap.asp>).

NOTE: Full explanation of "Sedimentary rock" from Legend is, "Sedimentary rocks, undivided (Miocene and Oligocene), covered with discontinuous veneer of gravel, sand, and loess."

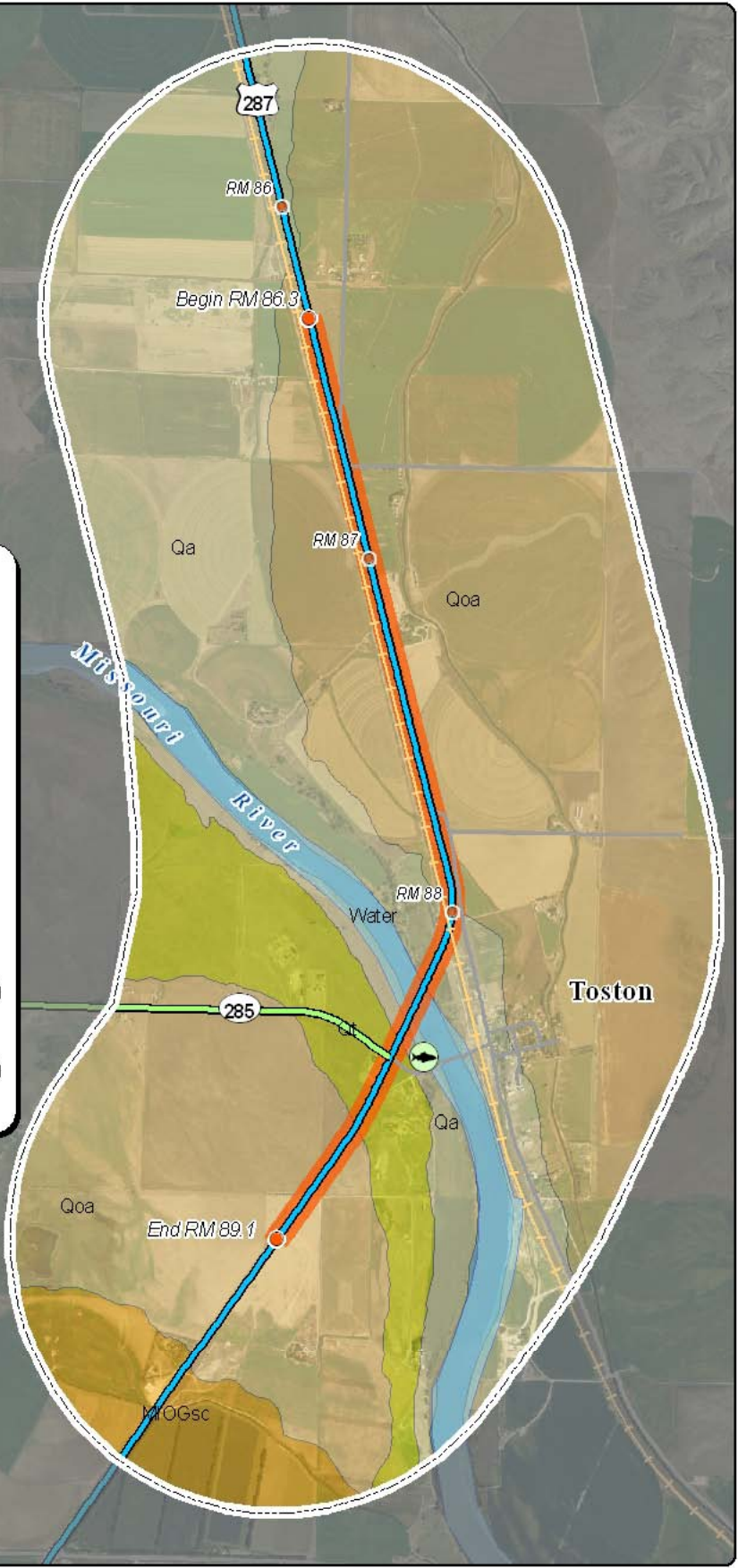



Figure 3-11
 Geology
 Toston Missouri River Crossing Corridor



N

 February 8, 2010
DRAFT



**Toston Missouri River
 Corridor Planning Study**

Environmental Scan

- ◆ Environmental scan will be completed in short term
- ◆ Helps provide sufficient information to compare conceptual improvement options
 - ◆ Fatal flaws?
 - ◆ Greater or lesser impacts
 - ◆ Can impacts be avoided, minimized or mitigated – and at what cost?
 - ◆ Procedural hurdles?
 - ◆ Environmental resource & regulatory agencies input

Next Steps

- ◆ **Continue study coordination and outreach**
- ◆ **Complete existing conditions and data gathering efforts**
- ◆ **Begin analysis of transportation needs**
- ◆ **Begin identification of potential improvement options for the corridor**

Next Steps

- ◆ Solicit comments from the public
- ◆ Review the displays - comment/edit preliminary information
- ◆ Areas of concern
- ◆ Known constraints
- ◆ General perception / ideas about the corridor

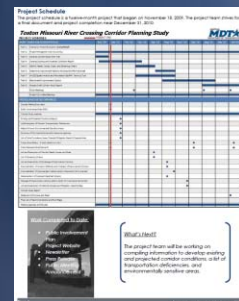
Conclusion

Questions, answers and/or comments?

Study Website:

<http://www.mdt.mt.gov/pubinvolve/toston/>

Study Newsletters:



Study Contact:

CDM Helena, ATTN: Jeff Key, P.E.

keyja@cdm.com

**50 West 14th Street, 2nd Floor
Helena, Montana 59601**

Tel: 406-441-1400 Fax: 406-449-7725