

# Urban Crashes and Community Transportation Safety Plans

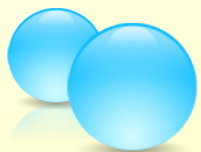
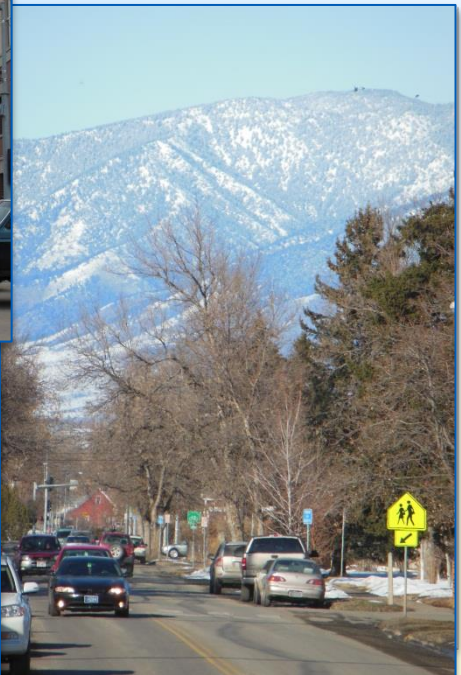
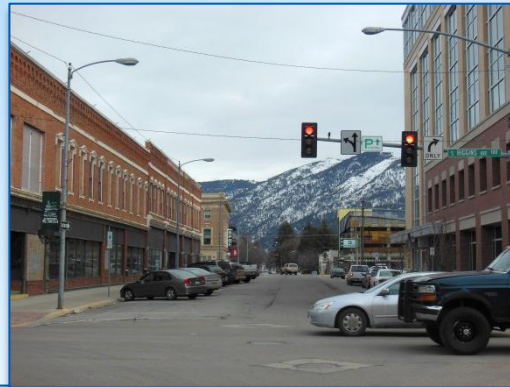
*presented to*

## 2013 Annual Transportation Safety Meeting

*presented by*

**Cambridge Systematics, Inc.**  
**Audrey Wennink**

**October 17, 2013**



# Urban Crashes

## Approach

- **In 2010 MDT established a pilot program for individual communities to request technical and financial support to develop Community Transportation Safety Plans (CTSP)**
  - » **Communities submit a written request including**
    - **Problem statement**
    - **Letters of Community Support**
    - **Local sponsor**
  - » **Technical and financial support is provided**
  - » **Local sponsor is responsible for coordinating plan development and overseeing implementation and tracking and reporting progress**

# Urban Area

## Targets

- **Reduce the five-year average number of fatalities and incapacitating injuries resulting from crashes occurring in urban areas from 306 in 2010 to 269 by 2015.**
- **Reduce the annual urban fatality rate per 100 million vehicle miles traveled from 0.43 in 2010 to 0.33 by 2015.**

# Community Transportation Safety Plans



## Bozeman Community Transportation Safety Plan



prepared by  
Cambridge Systematics, Inc.



June 2013



## Butte-Silver Bow Community Transportation Safety Plan



prepared by  
Cambridge Systematics, Inc.



October 2012



## Missoula Area Community Transportation Safety Plan

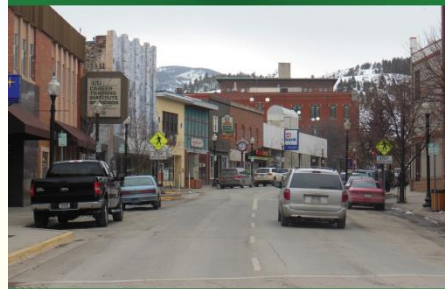


prepared by  
Cambridge Systematics, Inc.

September 2013

CTSP

## Greater Helena Area Community Transportation Safety Plan



prepared by  
Cambridge Systematics, Inc.

September 2013




# Previous CTSPs

- **Shelby-Toole County**
- **City of Hamilton**

*"Preserve and enhance the quality of life by improving transportation safety for all users."*


HAMILTON COMMUNITY  
TRANSPORTATION  
SAFETY PLAN




Prepared For:  
City of Hamilton

Prepared By:  
Camp Dresser and McKee


With Funding and Technical  
Assistance Provided By:  
Montana Department of  
Transportation



March 23, 2011

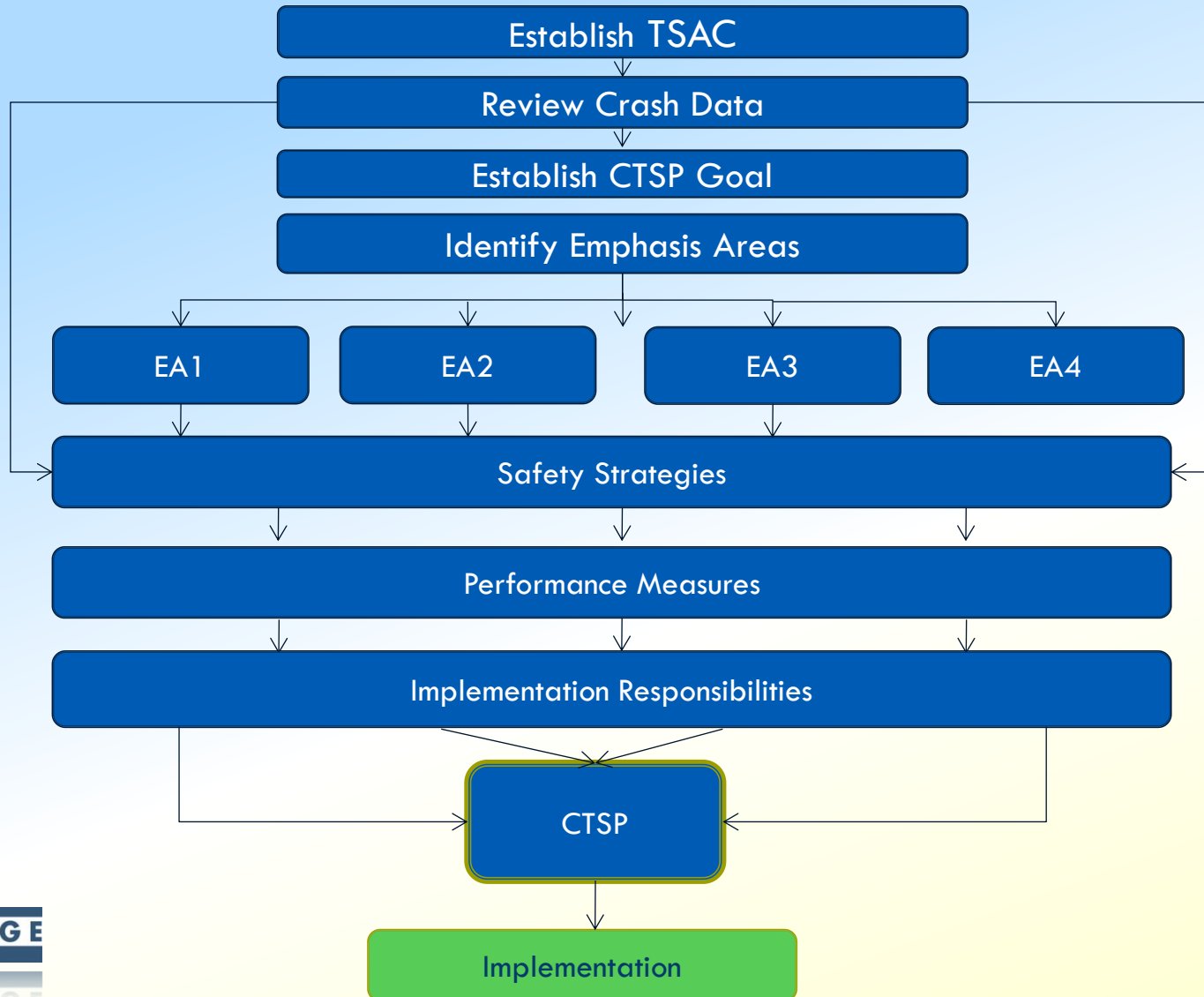


**Shelby-Toole County  
Community Transportation Safety  
Plan**



**February 2011**

# CTSP Development Process



# Community Benefits of CTSPs

- **Inform long-range planning**
- **Engage new stakeholders in safety**
- **Boost efficiency of existing resources**
- **Raise the profile of safety as a component of community quality of life**
- **Engage community leadership in safety**
- **SAVE LIVES!**



# Goals – 5 years

## **BUTTE-SILVER BOW**

*Reduce the five-year average of all crashes in BSB by 20% by 2018 (from an average of 671 crashes per year to an average of 537 crashes per year)*

## **HELENA**

*Reduce crashes in the Greater Helena Area by 25 percent by 2018, from 1,315 to  $\leq 986$*

## **BOZEMAN**

*Reduce annual fatalities and injuries by 25 percent between 2013 and 2018, from 213 to 160 fatalities and injuries.*

## **MISSOULA**

*Reduce the five-year average of fatal and severe injuries by 25 percent by 2018, from 143 to 107 fatal and severe injuries*



<b>EMPHASIS AREAS</b>	<b>Butte-SB</b>	<b>Bozeman</b>	<b>Helena</b>	<b>Missoula</b>
Safety Belt Use	X	X	X	X
Drug/Alcohol Impaired Crashes			X	X
Native American Crashes				
S.V. Run-Off-Road Crashes				
Traffic Records Mgmt.				
Young Driver Crashes	X			
High Crash Corridors/Locations	Intersections			Intersections
Large Vehicle/Bus Crashes				
EMS Delivery				
Urban Area Crashes				
Motorcycle Crashes				
Older Driver Crashes				
		Bicycle/Pedestrian	Bicycle/Pedestrian	
	Inattentive	Inattentive		

# Community Safety Summits



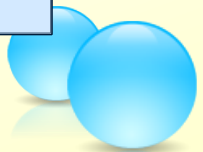
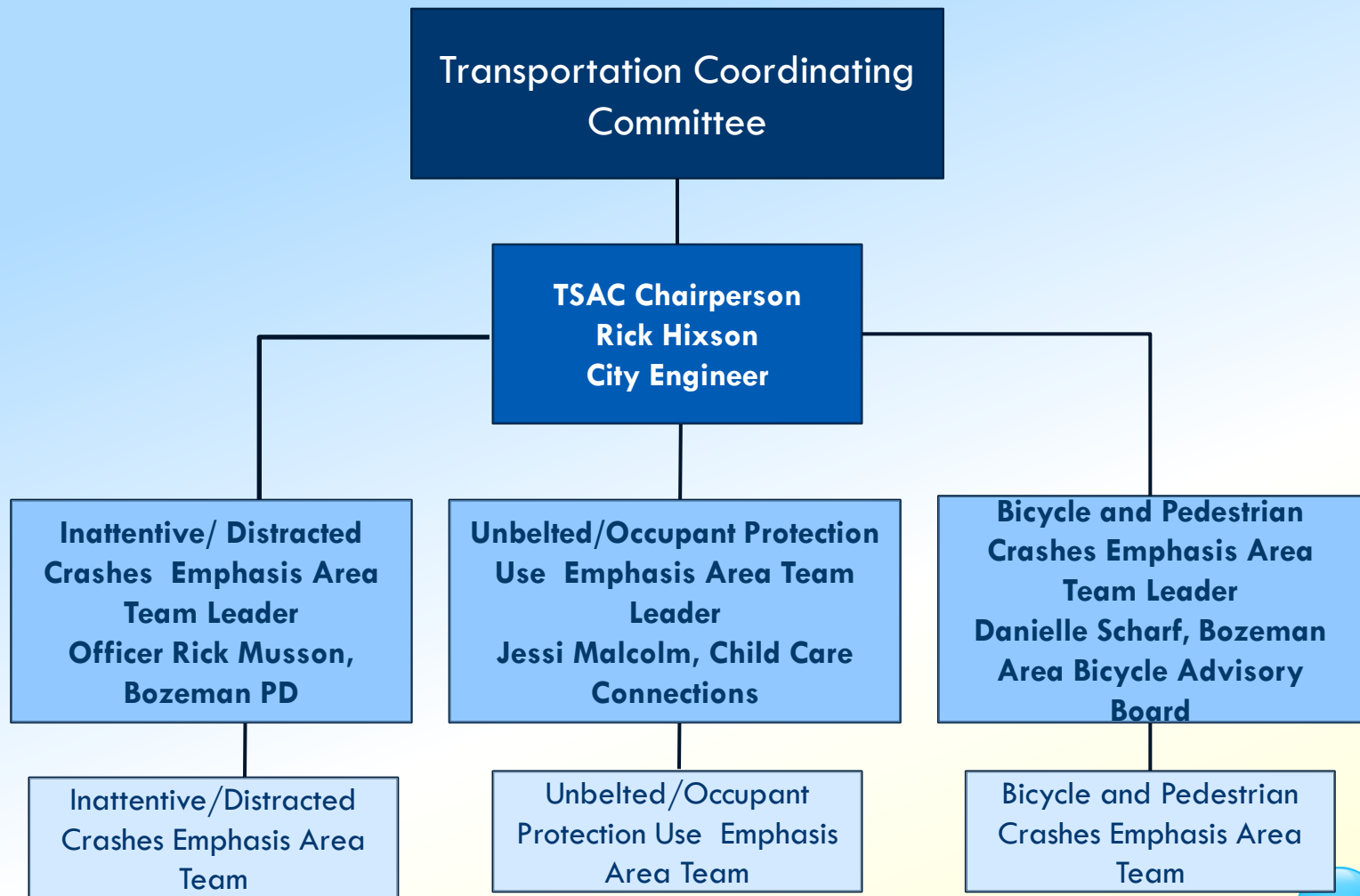
BOZEMAN DAILY  
CHRONICLE



 Independent Record

CAMBRIDGE  
SYSTEMATICS  
2 2 2 1 2 1 2 1 2

# Bozeman CTSP Implementation Structure



# CTSP Results – Shelby-Toole County

## Action Steps Implemented in 2012 - Impaired

- **Toole County Sheriff's Department training to improve prosecution of DUI offenders and monitoring**
- **RASS training sessions held throughout the year including "Train the Trainer"**
- **Letters and posters distributed to each tavern prior to New Year's Eve 2012 to encourage promotion of non-alcoholic beverages, designated drivers and responsible serving**
- **Toole County Sheriff's Dept. established a 24/7 sobriety program that monitors subjects every 12 hours once they have been convicted of a DUI or are out on bond for a DUI**

# Urban Area Crashes

## Moving Forward

- **CTSP Implementation**
  - » **Emphasis Area team meetings**
  - » **Ensure continuity of safety plan coordination if staff changes**
  - » **Tracking of Progress**
  - » **Reporting results annually to MDT**
  - » **For Community Transportation Safety Plan (CTSP) information**
    - <http://www.mdt.mt.gov/safety/plans-programs/community-plans.shtml>



# Questions and Discussion