

3D Intelligent Models

Mike Dyrdaahl

Engineering Operations Bureau Chief

Who is this guy
and
what does he do?

Change is inevitable



12/1/2016

2016 Preconstruction Conference

3

3D Workflow Study and Implementation plan (Gap Analysis)

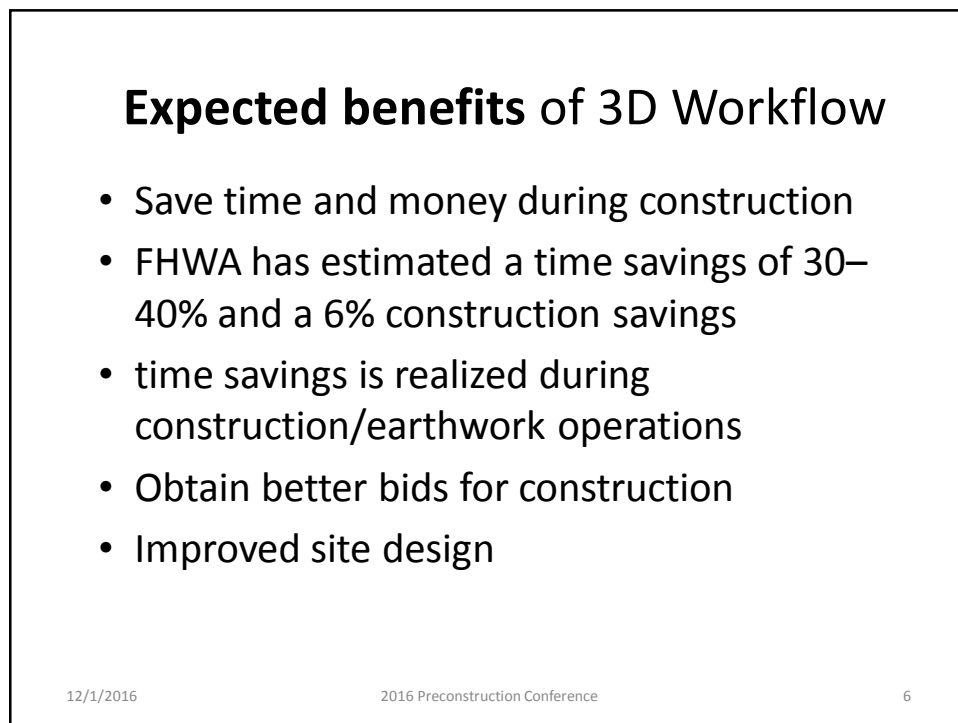
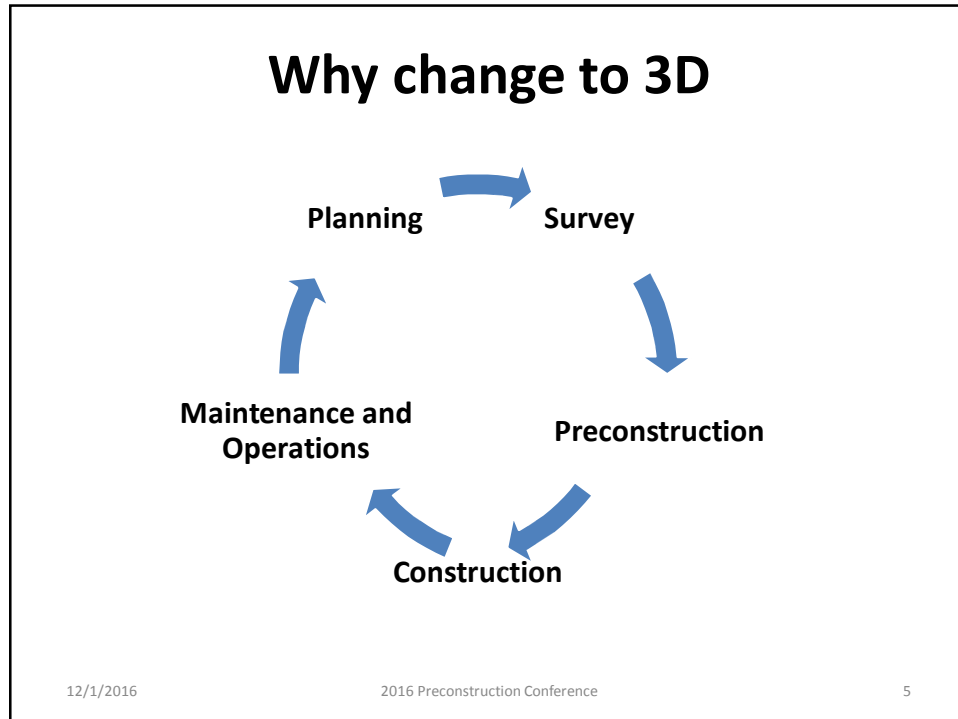
- Hired Bentley Systems
- Completed Feb 2016
- Objective

Identify changes/impacts to MDT's organizations, business processes, practices and standards required to implement 3D model workflows into MDT's highway program.

12/1/2016

2016 Preconstruction Conference

4



Expected benefits of 3D Workflow

- Accelerate developing a culture of interdisciplinary teams collaborating throughout the lifecycle to develop better designs
- Supports the use of 3D intelligent models when implementing Transportation Asset Management plans

12/1/2016

2016 Preconstruction Conference

7

Key Questions addressed by 3D workflow Gap Analysis

- What are the key issues that has kept MDT in the paper world?
- What are the high level challenges that need to be addressed moving forward?
- Full report found at:
 - <http://mdtinfo.mdt.mt.gov/eiss/>
 - Three documents under INFO section

12/1/2016

2016 Preconstruction Conference

8

3D workflow Gap Analysis

Preconstruction Program
 Bridge
 Consultant Design
 Eng. Info Services (CADD/EPS/PPMS)
 Right of Way
 Traffic & Safety

Highways Bureau
 Cost Estimating
 Design Visualization
 Hydraulics
 Photogrammetry & Survey
 Road Design
 Tort Claims

Professional
 Audit Servi
 Legal
 Civil Rights

Public Info,
 MDT Outrea

Rail, Transi
 Environmer
 State Highv

INFO
 3D Study & Implementation
 Plan Report
 Bridge Specials
 Detailed Drawings
 Docuplot User's Guide
 Geotechnical Specials
 Project Charge Numbers
 Project Work Codes
 Project Work Codes Defined
 Road Design Manual
 Term Contract Procedures
 Traffic Specials
 CADD Help

Intranet Home MINE **Departments** Internet Home

Full report found at:
<http://mdtinfo.mdt.mt.gov/eiss/>
 Three documents under INFO section
Report & two appendices

12/1/2016 2016 Preconstruction Conference 9

Workflow Study **Vision Statement**

- Utilize **intelligent** 3D CAD models to support the lifecycle of transportation projects that provides:
 - More economical and efficient project delivery
 - Improved public safety
 - A focus on benefits to the tax payer
- “A Journey”

Initial 3D Project Objectives

The workflow study focused on these project delivery business processes:

- Preconstruction
- Procurement
- Construction
- Emphasis on Automated Machine Guidance (AMG) for roadways

12/1/2016

2016 Preconstruction Conference

11

A call to action

- A “Vision”
- Dedicated team
- Organizational change plans
- An implementation plan
- Management commitment to the change

12/1/2016

2016 Preconstruction Conference

12

Requires Organizational Transformation

- **Creating a Climate of Change**
 - Increase Urgency
 - Build Guiding Teams
 - Get the Vision Right
- **Engaging and Enabling the Whole Organization**
 - Communicate for Buy-In
 - Enable Action
 - Create Short Term Wins
- **Implementing and Sustaining the Changes**
 - Don't let up – monitor and measure progress
 - Make it stick – “the way we do business here”

12/1/2016

2016 Preconstruction Conference

13

Discovery Sessions for Pre-Construction

- Survey Section
- Road Design Section
- Bridge Design Section
- Consultant Design Bureau
- Engineering Information Services Section
- Hydraulics Section
- Materials Bureau – Pavement Analysis Section, Physical Testing Section, Geotechnical Section, Non-Destructive Testing Unit, Pavement Engineering Unit
- Right-of-Way – Acquisition Section, Lands Section, Utility Section
- Traffic and Safety Bureau – Geometrics Section, Safety Section, Traffic Section

12/1/2016

2016 Preconstruction Conference

14

Discovery Sessions for Construction, Contracting and Contractors

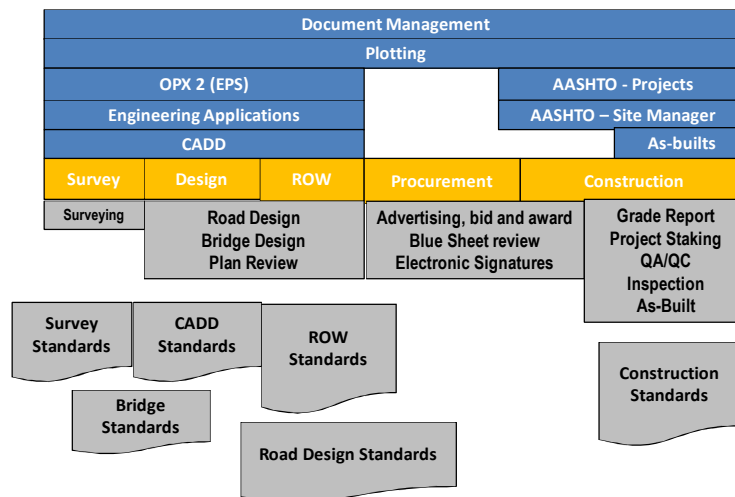
- Procurement Section
- Legal
- Maintenance MMS System
- IT
- Field Construction
- Environmental
- Contractors
- Construction Reviewer and Constructability Review
- Construction Administration
- As-Built

12/1/2016

2016 Preconstruction Conference

15

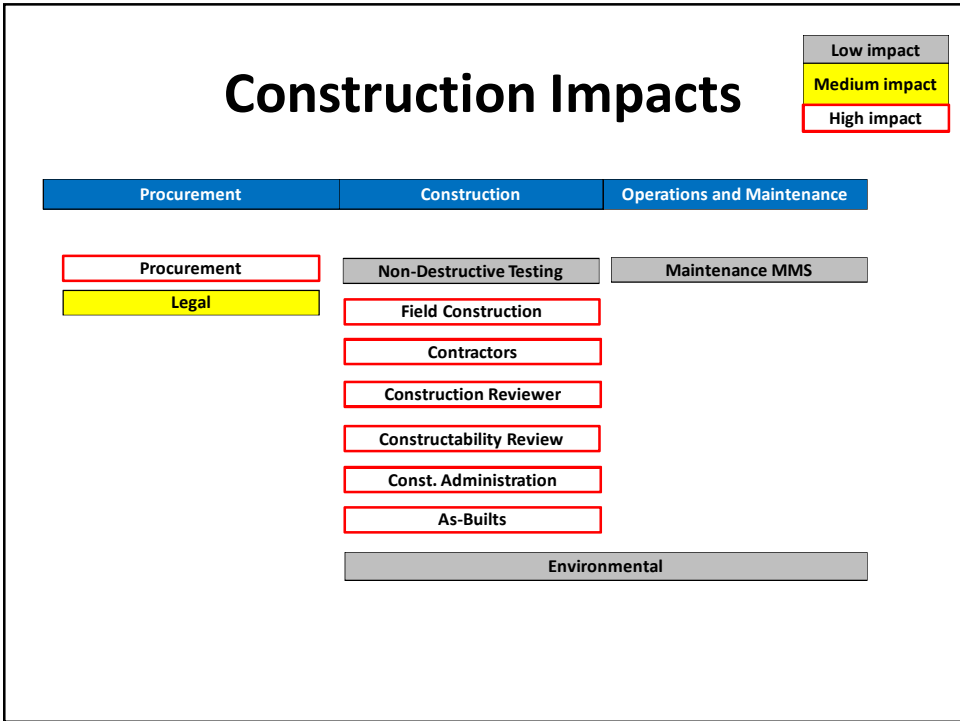
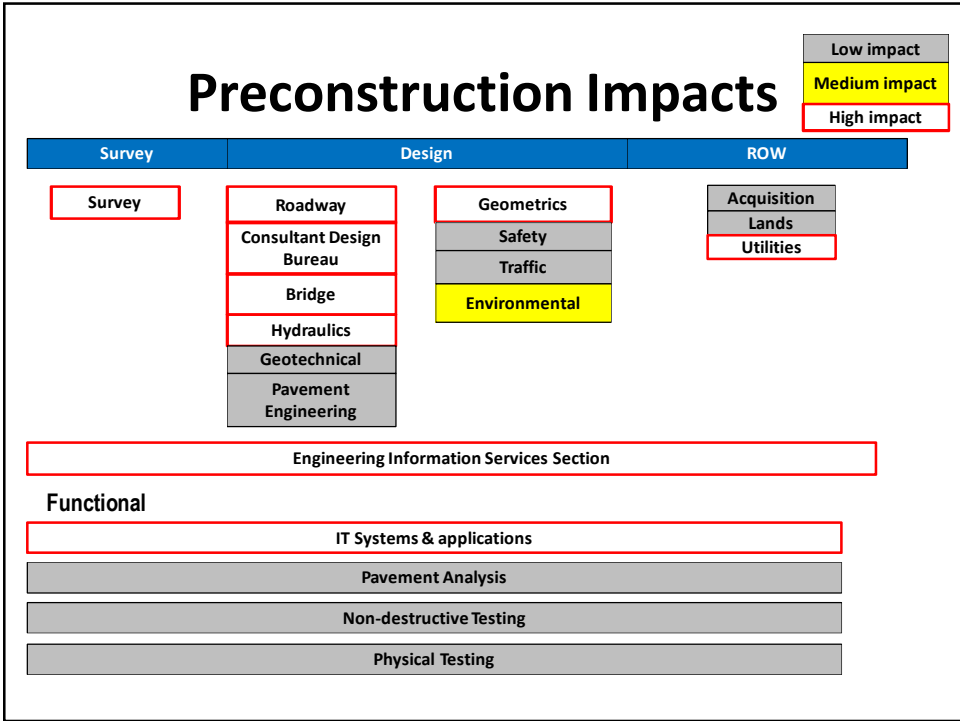
Project Delivery Impacts 2D to 3D



12/1/2016

2016 Preconstruction Conference

16



Recommendations - Survey

- Field Survey
- Point Cloud Features
- Photogrammetry
- Construction Project Survey
- Survey Standards
- Lidar Point Clouds
- Aerial Imagery

12/1/2016

2016 Preconstruction Conference

19

Field Survey Recommendation

The current MDT practice is capturing survey shots at a 25 feet grid and any breaks in between. Surveys design files are currently delivered in 2D or 3D based upon requests from Design.

Decrease the maximum distance between points (point density) of some survey shots. Since the 3D design models should be processed at a fine interval, field surveys need to increase accuracy with respect to point density. For tie-ins to existing sewers, curbs, culverts, pavements, utility covers, bridge elements, use a 5 foot maximum distance between points. For minimum grades on pavements or ditches, existing pavements that will be modified, use a 10 foot maximum distance between points.

12/1/2016

2016 Preconstruction Conference

20

Recommendations – Design

- Field Reviews
- 3D Modeling – Road Design Section
- Electronic Deliverables
- 3D Modeling and Design - Hydraulics Section
- 3D Modeling - Utilities Section
- 3D Modeling - Geometrics Section, Safety Design, Consultant Design Bureau, and Lands Section
- 3D Modeling - Geotechnical Section
- 3D Modeling – Bridge Design

12/1/2016

2016 Preconstruction Conference

21

Electronic Deliverable Recommendation

Contractors are currently using different software for 3D modeling and AMG vendors that use different input files.

Deliver a full selection of electronic 3D model files to construction bidders. A standard list of deliverables needs to be developed. Delivering LandXML files (.xml), MicroStation Design files (.dgn), and Infrastructure Construction Models files (.icm) is recommended.

12/1/2016

2016 Preconstruction Conference

22

Recommendations

- Communication Between Design and Construction Staff
- Design / CADD Standards
- Training
- Legal
- Contracting

12/1/2016

2016 Preconstruction Conference

23

Implementation Risks and Barriers

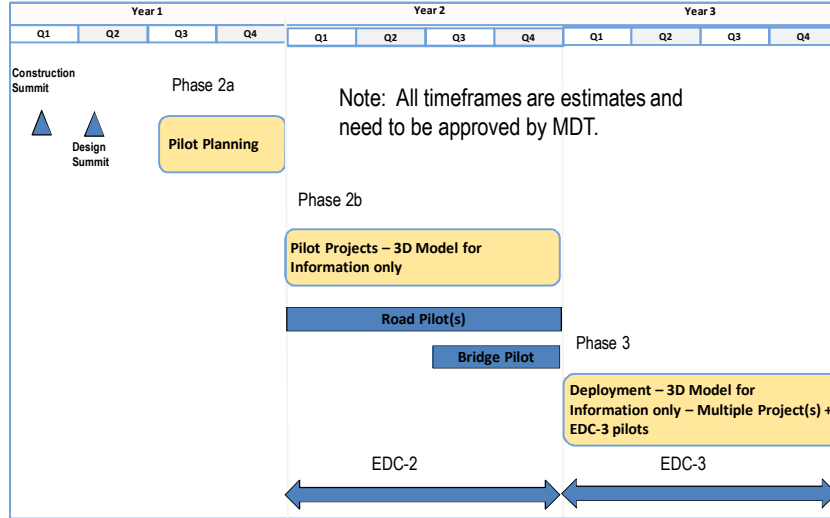
- Other DOTs have performed a workshop to identify risks for the implementation plan
- Need to develop a collaborative project delivery process when using 3D models
- Learning curve
- Impact on design taking more time to create 3D models
- Significant changes for DMS and Docuplot
- Budget

12/1/2016

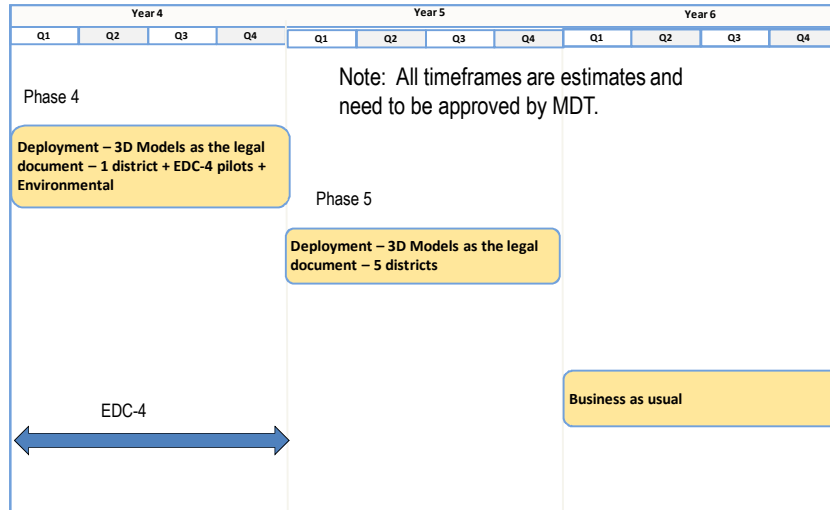
2016 Preconstruction Conference

24

Proposed Implementation Plan



Proposed Implementation Plan



Moving forward with 3D Guiding Teams

- 3D Models for Bidding & Specifications
- 3D Model Review
- 3D Roadway Design
- 3D Bridge Design
- 3D Survey & Real Time Verification
- **3D IT infrastructure**
- **3D As-Built & Asset Management**

12/1/2016

2016 Preconstruction Conference

27

3D CADD Implementation

Delivery of MicroStation SS4 (Open Roads)

- Currently in test phase
- Full install by end of 1st quarter 2017
- Will allow both Geopak & Open Roads
- Critical Workspace development
- Training program

12/1/2016

2016 Preconstruction Conference

28

How will 3D effect your work?

Guiding teams will influence transition to 3D design.

- What type of training
- Project conversion from 2D to 3D
- What type of projects are 3D candidates
- What information is in a 3D model
- How to check 3D model
- How to transfer 3D data to construction
- What does MDT Construction need
- What does the contractor need

12/1/2016

2016 Preconstruction Conference

29

IT Challenges

- New Microstation technology
- Dept of Admin Convergence Directive
- DMS at end of life
- Docuplot at end of life
- Cost of data storage
- Connectivity and transfer speed
- Budget

12/1/2016

2016 Preconstruction Conference

30

Change is inevitable

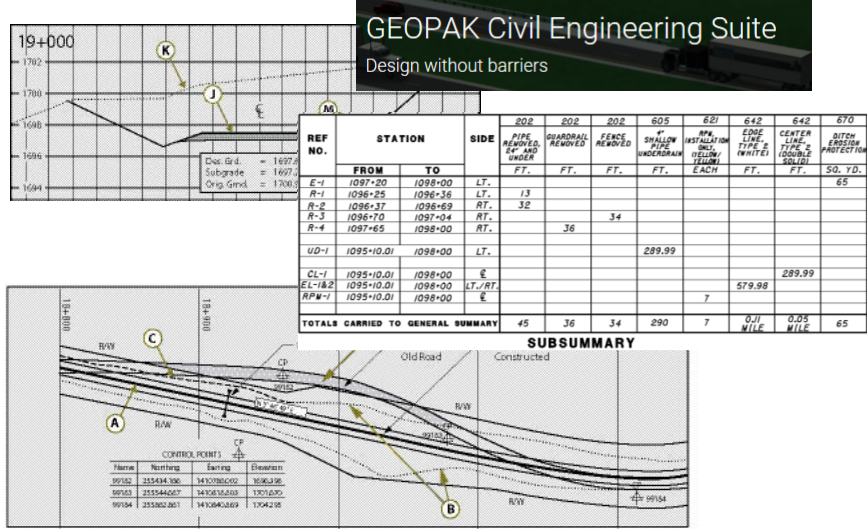


12/1/2016

2016 Preconstruction Conference

31

Change is inevitable



12/1/2016

2016 Preconstruction Conference

32

Questions

$$(x + a)^n = \sum_{k=0}^n \binom{n}{k} x^k a^{n-k}$$