

SALMON LAKE



**HIGHWAY
RECONSTRUCTION**

Welcome!

Vision Zero



Eliminate all traffic fatalities
and serious injuries

Increase safe and healthy
mobility for all

WE NEED EVERYONE TO DO THEIR PART:

- Drive attentively.
- Drive sober.
- Drive to the conditions and do not speed.
- Eliminate distracted driving, including cell phone use.
- Wear your seatbelt.

Together, we can save lives!

Learn more about Vision Zero at
www.mdt.mt.gov/VisionZero



SLOW FOR THE ZONE.
GIVE WORKERS A BRAKE.



Stay alert.
Better roads ahead!



Project Overview

The Montana Department of Transportation (MDT) will reconstruct about four miles of Montana Highway 83 (MT 83) along the east side of Salmon Lake. Roadway and safety enhancements will increase visibility and:

- Widen the highway to include 4 ft paved shoulders.
- Straighten curves and flatten the roadway profile.
- Improve existing cut slopes to reduce rock fall hazards.
- Improve drainage.
- Install new signage and guardrail, as necessary.

Construction will start March of 2023, with final activities wrapping up in the spring of 2024.



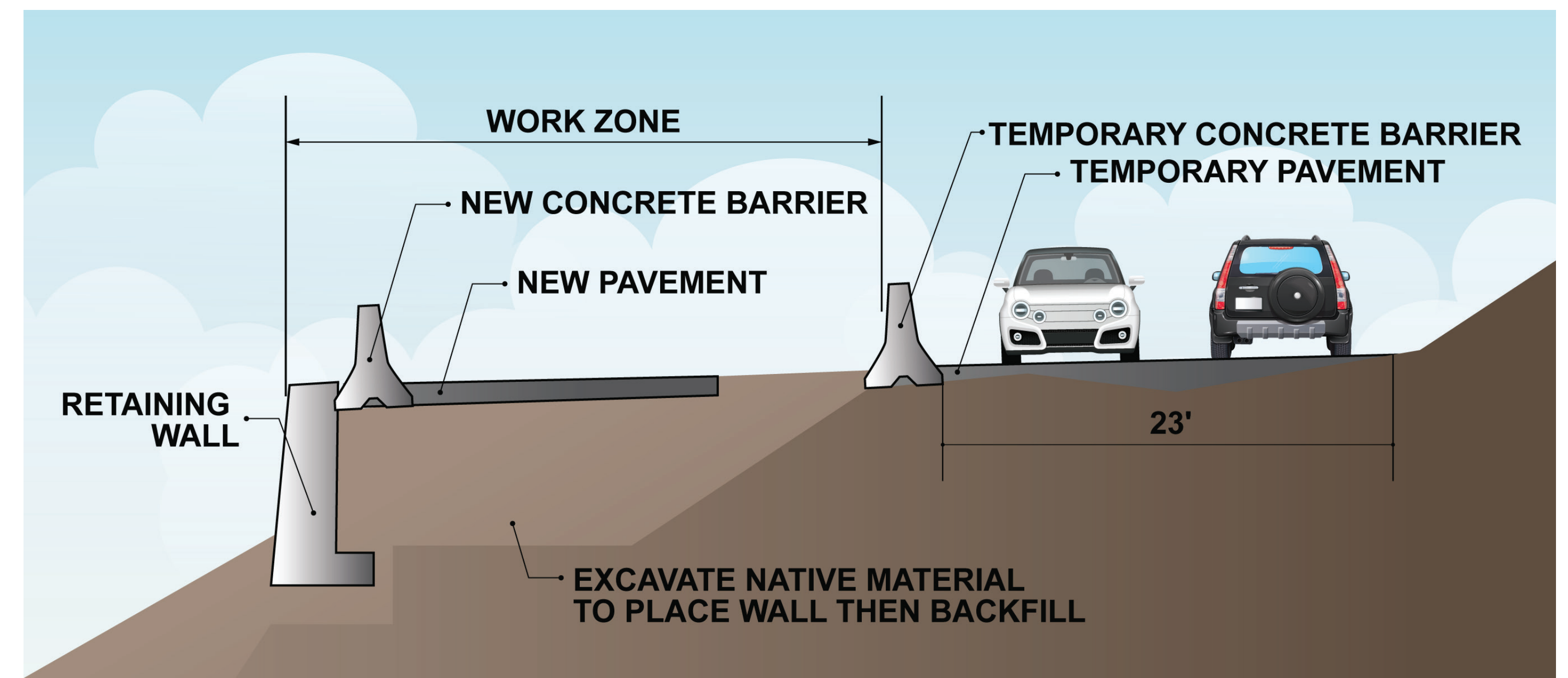
General Design Features

ROADWAY DESIGN

- Design includes two, 12 ft travel lanes with 4 ft shoulders.
- Roadway curves have been improved to meet current design standards.
- Existing pullouts will be maintained and paved to 18-24 ft wide.
- Woodworth Road: Realign to create a more perpendicular intersection for improved sight distance.

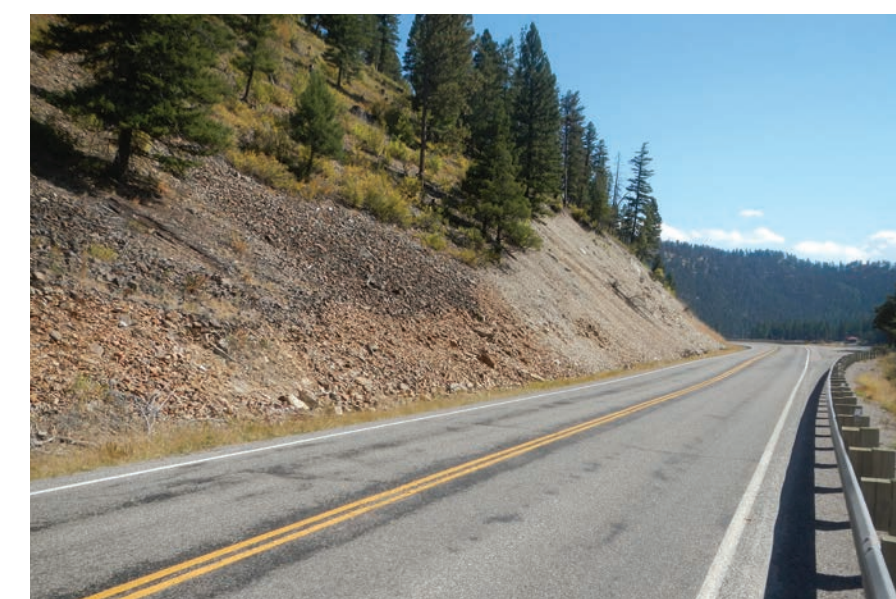
REDESIGNS of private approaches primarily includes:

- Better sight distance in both directions.
- Clearing of obstructions such as trees and small brush within the roadway right-of-way.



RETAINING WALLS

- Used to widen the road along the lakeside.



CUT SLOPE TREATMENT OR CATCHMENT DITCH

- Treatments help keep rock off the road.



What to Expect During Construction



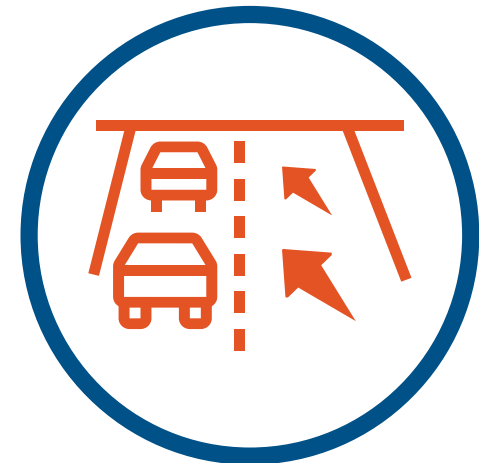
SPRING 2023 THROUGH SPRING/SUMMER 2024



WORK HOURS primarily will occur six days/week from 7 a.m. – 7 p.m. Generally, no construction work on Sunday. Nighttime work and use of construction lights will be announced in advance.



LAKE ACCESS will be maintained throughout construction.



TEMPORARY LANE CLOSURES — During work hours, expect pilot cars to provide two-way traffic on one travel lane. Shoulders will be limited due to placement of temporary concrete safety barriers. **Expect delays.**



WIDTH RESTRICTIONS — Expect permanent wide load restrictions at 12 ft and above. No wide load accommodations will be made.



SPEED LIMITS between 25 and 35 mph will be posted in construction zones. For the safety of our workers, please pay attention to changing speed limits.



DRIVERS ARE REMINDED to wear your seat belt, don't drive impaired, and put your phone down. For our safety and yours, please be alert to new traffic patterns.



Roadway Construction Elements



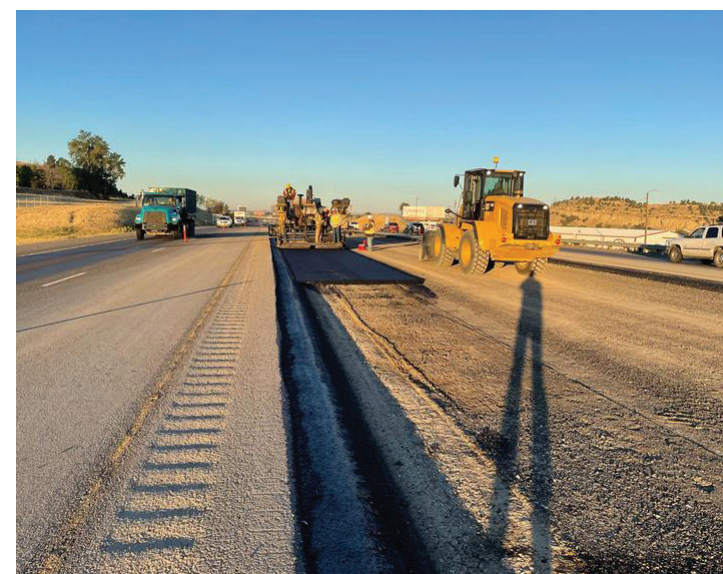
COORDINATE CONSTRUCTION TRAFFIC

Protecting drivers and workers while allowing traffic movement onto and off the roadway.



INSTALL BARRIER

Concrete barrier and guardrail to protect drivers and workers during construction.



REMOVE PAVEMENT

Remove existing pavement surface based on where the work is occurring.



CONSTRUCT RETAINING WALLS

Retaining walls constructed along Salmon Lake will provide additional shoulder width. Be aware of temporary traffic control in these areas.



ROAD AND DITCH GRADING

Grade roadside ditches and prepare the base through compaction.



INSTALL CULVERTS

Trenches and pipes will be installed to improve drainage.



CONSTRUCT APPROACHES Including Driveways

Grade and prepare the Woodworth Road intersection to tie into MT 83. Twenty-four-hour notice will be given to landowners before private driveway construction.



PAVE ROADWAY

After base is properly installed, a new asphalt surface is installed.



Construction Schedule



FALL 2022

Tree clearing in the project area took place August of 2022.

2023

Majority of construction, including:

- Widen and reconstruct roadway.
- Build retaining walls.
- Install rock fall treatments to help keep rocks off the road and enhance safety along the 3 large cut slopes.
- Build soil nail walls to retain unstable slopes along Woodworth Road (blasting not anticipated).
- Install new culverts.

SPRING/SUMMER 2024

Cleanup, pavement sealing, final signing, and striping.



Projects Nearby



PROJECTS IN DEVELOPMENT

CLEARWATER JUNCTION INTERSECTION — The intersection of Montana Highway 83 (MT 83) and Montana Highway 200 (MT 200), known as Clearwater Junction, was identified by the Highway Safety Improvements Program as needing improvements to alleviate traffic and safety concerns. The preliminary study phase was completed in the fall of 2021 and a wide range of intersection. For up-to-date information, follow us on the project's website.



Website:
Clearwater Junction Intersection
Montana Department of Transportation

SEELEY LAKE — SOUTH HIGHWAY RECONSTRUCTION — MDT will reconstruct MT 83 north of Salmon Lake starting about 1 mile south of Placid Creek Road and extending northerly about 4 miles, ending south of the town of Seeley Lake. The project will reconstruct the roadway surface and enhance roadway safety features by straightening the alignment where feasible, provide wider turn lanes, improve roadside slopes, and construct a new bridge. For specific improvements, see the project's website.



Website:
Seeley Lake — South Highway Reconstruction
Montana Department of Transportation



Projects Nearby



SUMMER 2023 CONSTRUCTION

BETWEEN MISSOULA AND KALISPELL — MDT is completing a roadwork project on US Highway 93 (US 93) between the Wye intersection and Big Arm in the spring of 2023. For more information: <https://mdt.mt.gov/pubinvolve/us93rumblestrips/>

GLOVER SAFETY — A safety project for a few weeks this summer, north of Pablo at Glover Road and the US 93 intersection. New chip seal, guardrail and signing will be added to the curves on Glover Road. A flasher will be installed to alert eastbound vehicles.

RONAN-NORTH — MDT is reconstructing about 1.5 miles of US 93 in Ronan from the Round Butte Road intersection north. The project is currently underway and expected to be completed in 2023. See <https://mdt.mt.gov/pubinvolve/ronanurban/>

SWAN LAKE — MDT is improving nearly 18 miles of MT 83 near Swan Lake beginning in April 2023, which will extend the life of the pavement and provide a smoother driving surface. Website upcoming.

SWAN LAKE SOUTH — About 11 miles of MT 83 will be improved through a thin asphalt overlay and sealant, pavement markings, signage, guardrail upgrades, centerline rumble strips, and bridge surface smoothing at Lion Creek. Website upcoming.



Sign Up for Weekly Construction Updates



SIGN UP FOR WEEKLY CONSTRUCTION UPDATES

OR

CHECK OUT THE PROJECT WEBSITE



EMAIL

SalmonLakeHWY83@hdrinc.com



CALL

Lisa Gray
HDR Public Involvement Lead
406-208-0551



CONTACT

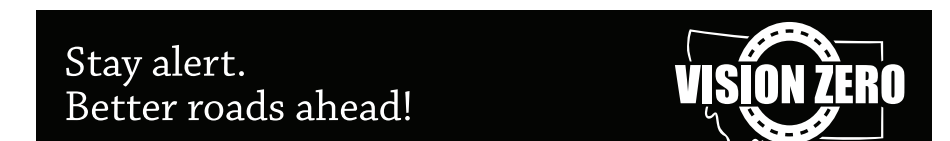
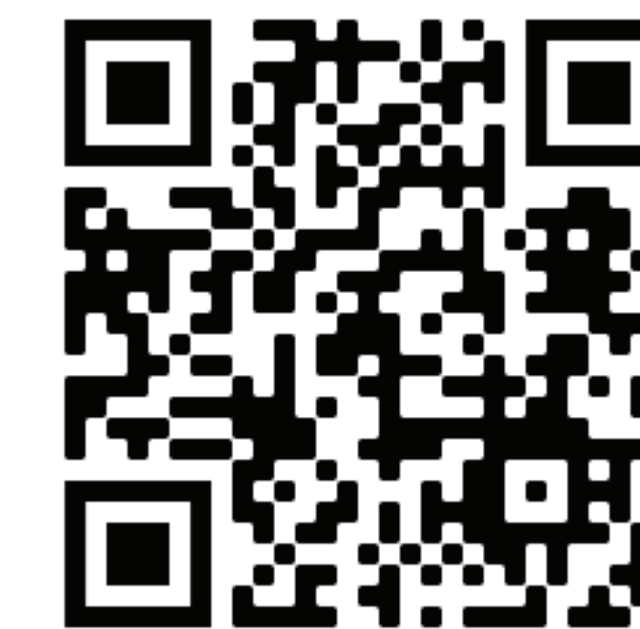
Matt Straub
MDT Engineering Project Manager
mstraub@mt.gov



Salmon Lake Highway Reconstruction

Montana Department of Transportation (MDT) (mt.gov) or

mdt.mt.gov/pubinvolve/salmonlake



SALMON LAKE



**HIGHWAY
RECONSTRUCTION**

Thank You!

Thanks to our great project team,
including MDT, HDR, Kiewit, and
many Montana workers.