

Montana Problem Identification Data Overview - FFY 2011 2009 Data



Statewide Overview

All highway users in Montana arriving safely at their destinations.

2009 Highlights

- Fatalities: 221 ↓8
- Injuries: 7,351 ↓1,114
- Severe injuries: 1,331 ↓234

- Fatal crashes: 198 ↓10
- Injury crashes: 5,227 ↓566
- Property damage only crashes: 15,538 ↓388

- Alcohol-related fatalities: 105 ↑1

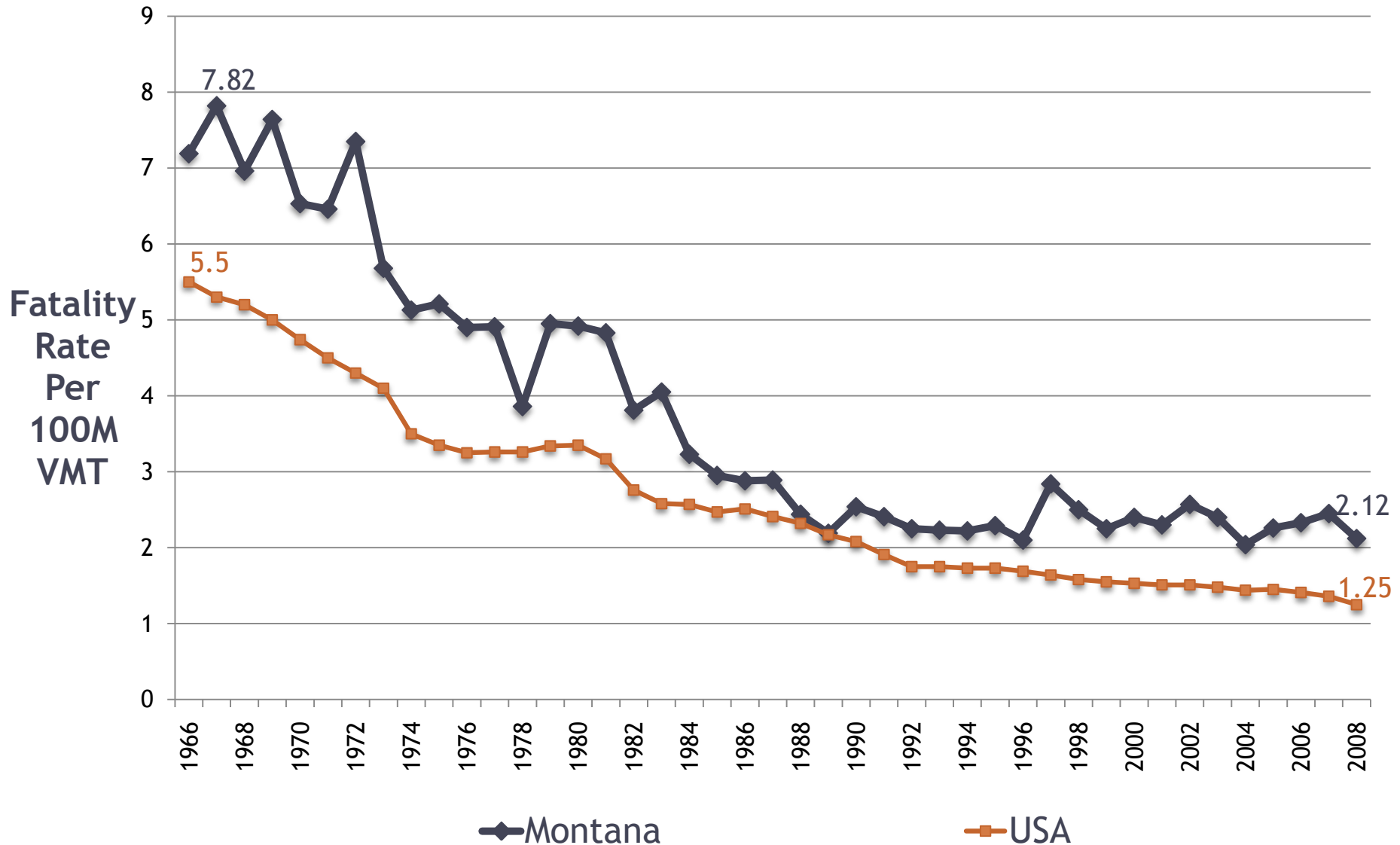
Current Year-to-Date Fatality Comparison

- January 1 - May 10: 2010 vs 2009
- Preliminary data, subject to results from further investigation

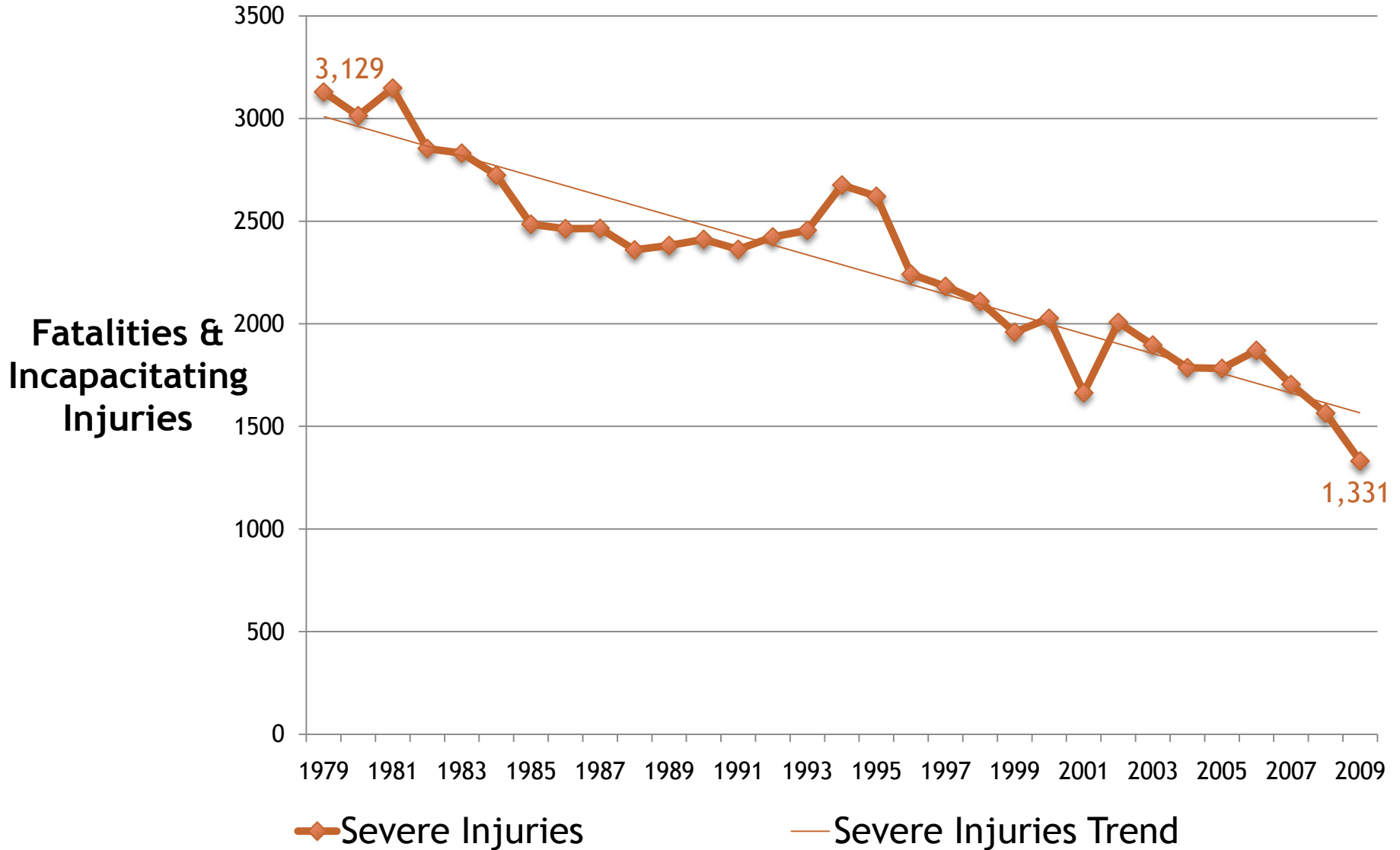
- Fatalities: ↓
- Fatal Crashes: ↓

- Alcohol-Related: ↓
- Occupants Not Using Seat Belts: ↑

Fatality Rate - Montana vs US

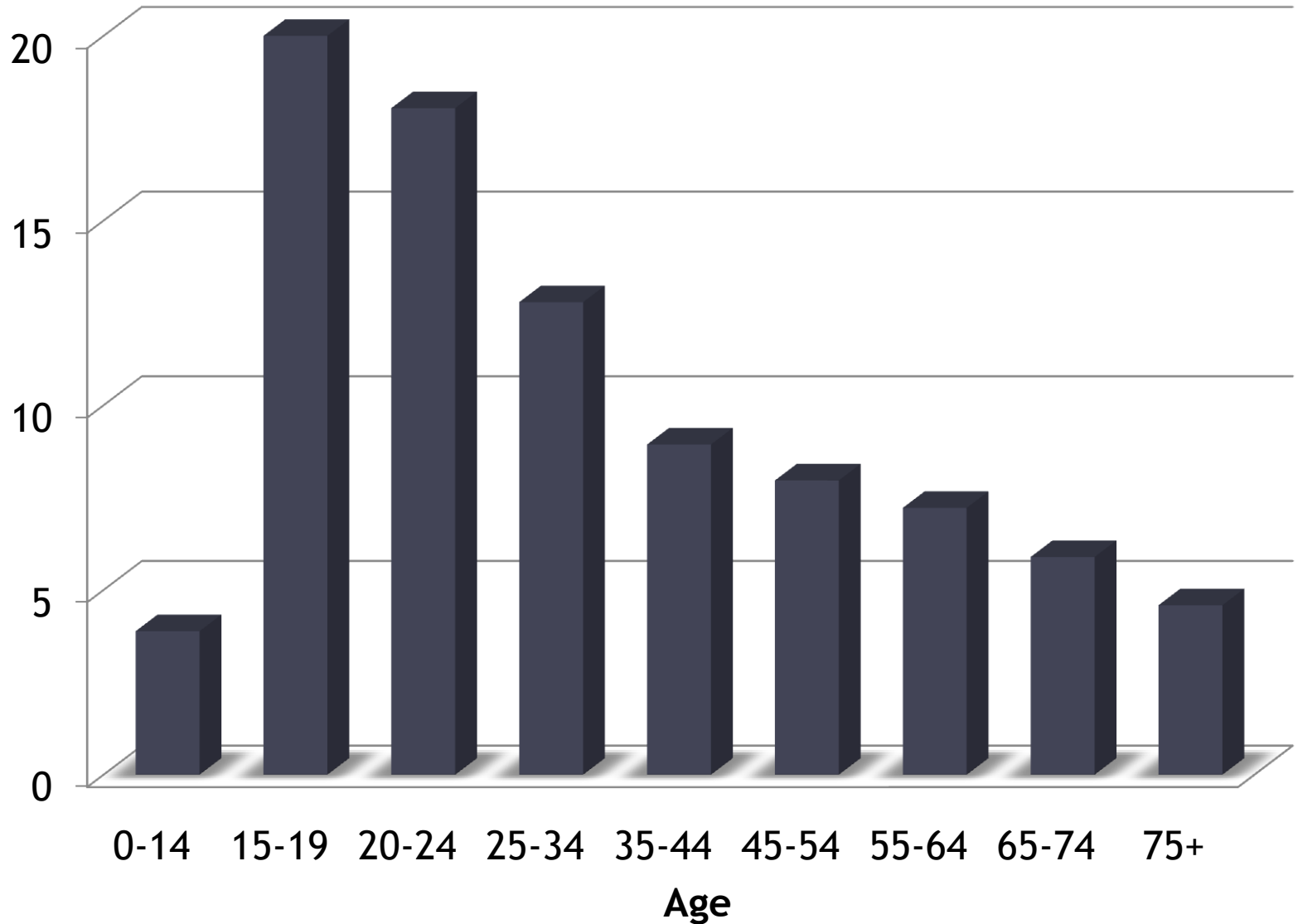


Montana Severe Injuries

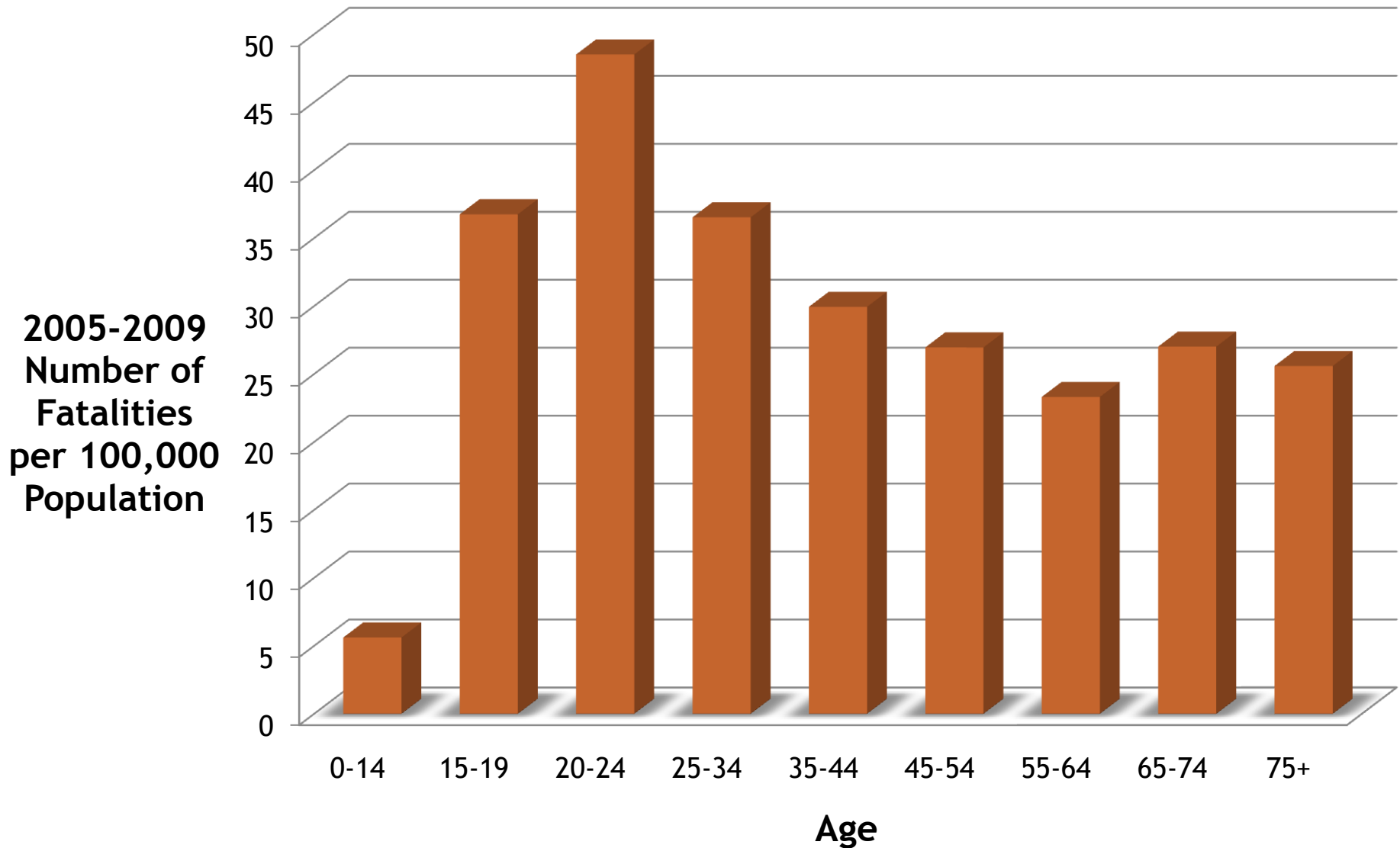


Injuries by Age for All Crashes

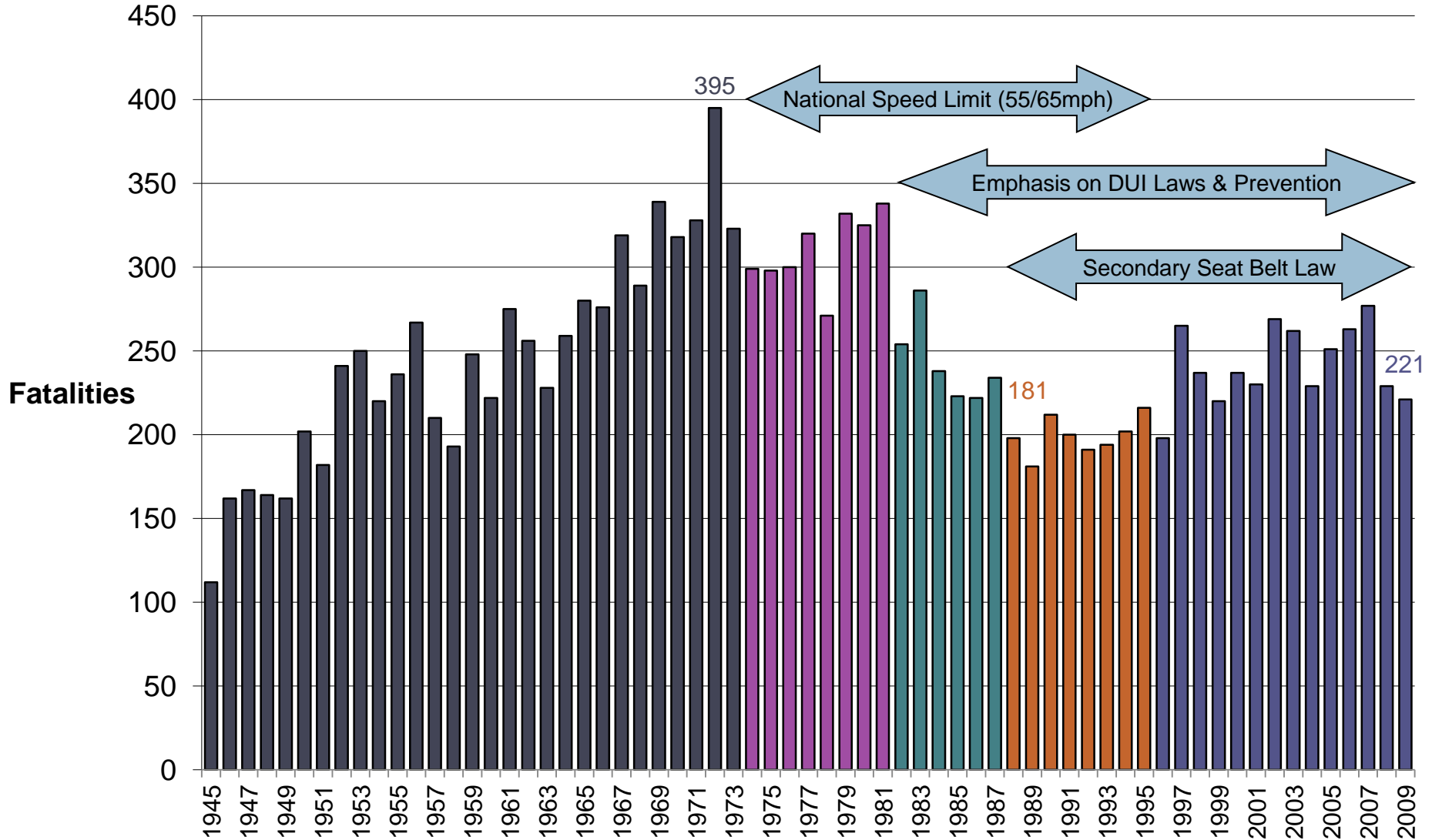
2005-2009
Number of
Injuries
per 1,000
Population



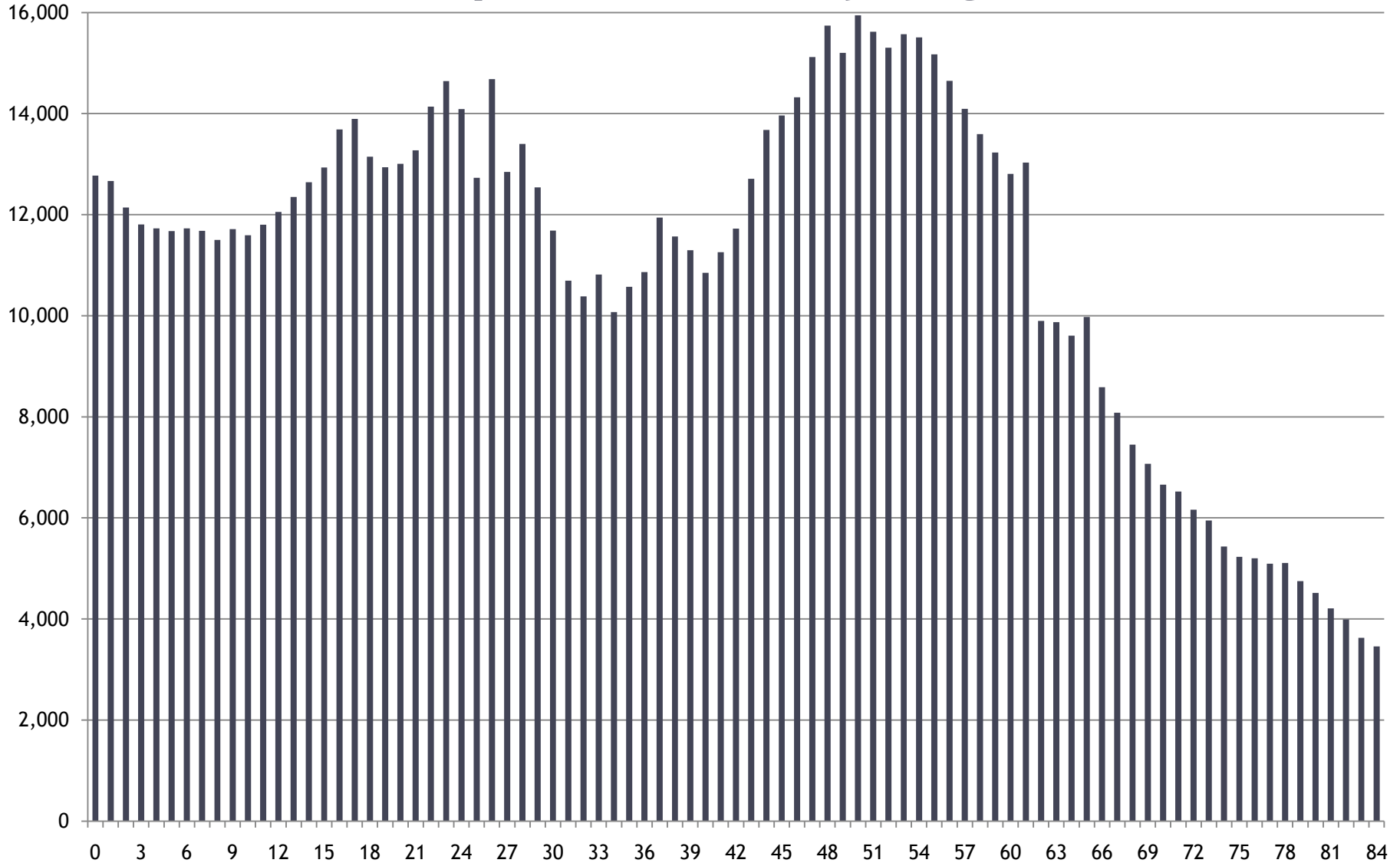
Fatalities by Age for All Crashes



Montana Traffic Fatalities



Montana Population by Age



Single Vehicle, Run-Off-The-Road Crashes, 2009 Summary

- Single Vehicle ROTR Crashes compared to All (Statewide) Crashes
 - All Crashes: 28.9% ↓
 - Fatal Crashes: 59.1% ↑
- Rural Single Vehicle ROTR Crashes compared to Rural Crashes
 - All Crashes: 51.0% ↓
 - Fatal Crashes: 56.1% ↓

MT Dept of Transportation Highway Traffic Safety Office

Danielle Murphy
(406) 444-3430
dmurphy@mt.gov

Native American

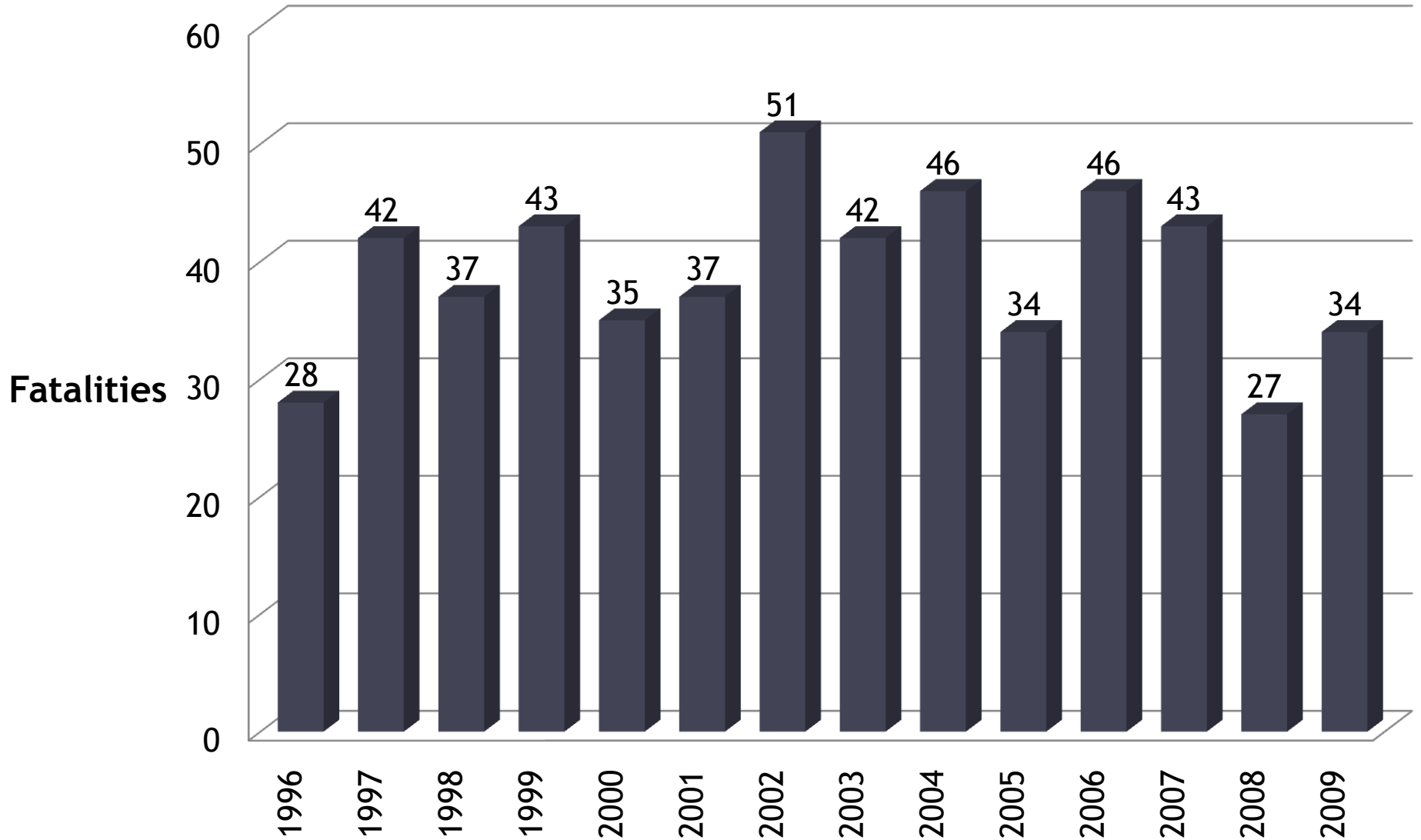
MT Problem ID

Native America Fatality Summary

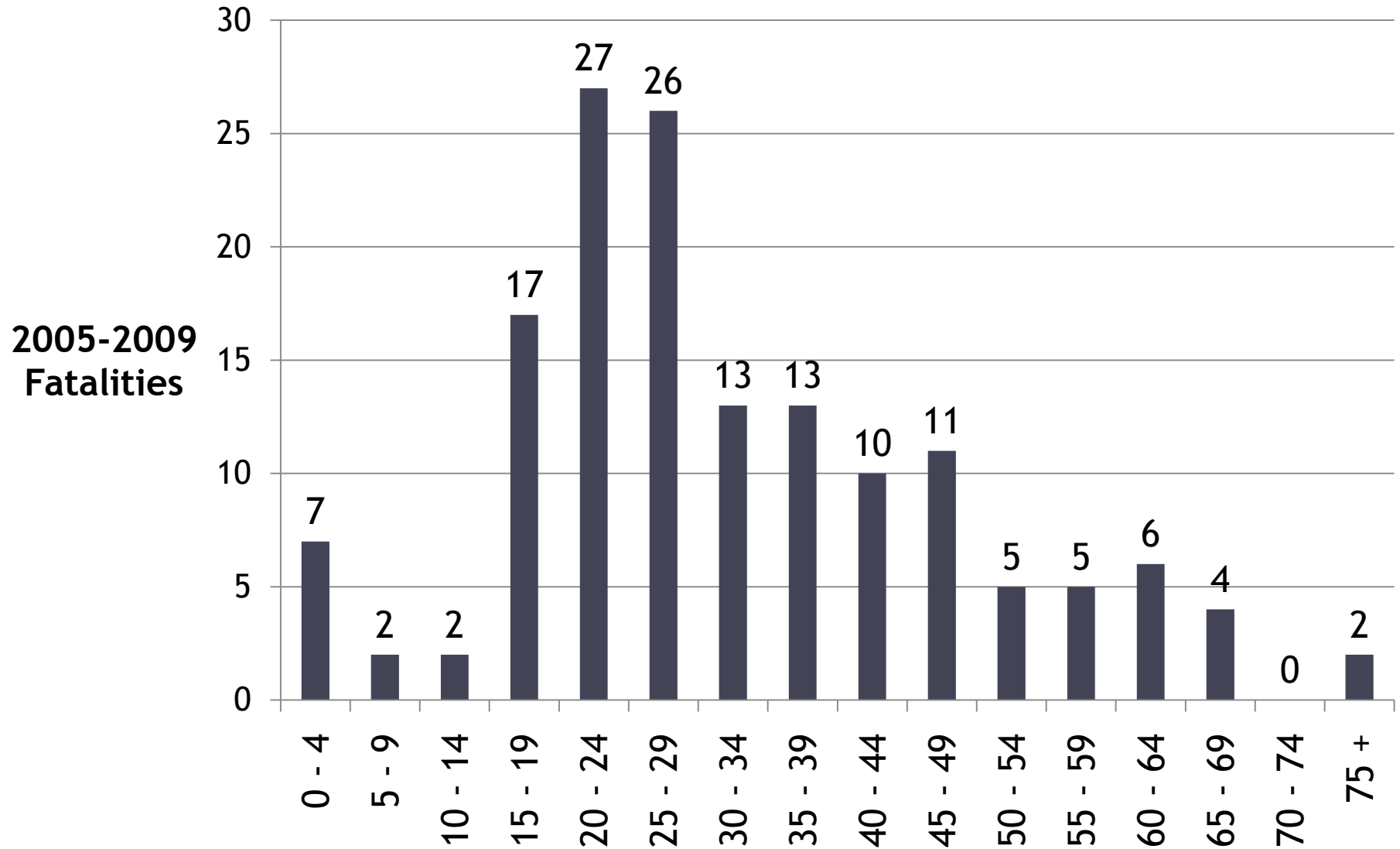
- Single Year Comparison

- Fatalities: 34 ↑
- Alcohol-Related: 22 ↑
- Occupants Not Using Seat Belts: 23 ↑
- On Reservation Fatalities: 16 ↑

Native American Fatalities



Native American Fatalities by Age









Young Drivers (Under 21)

MT Problem ID

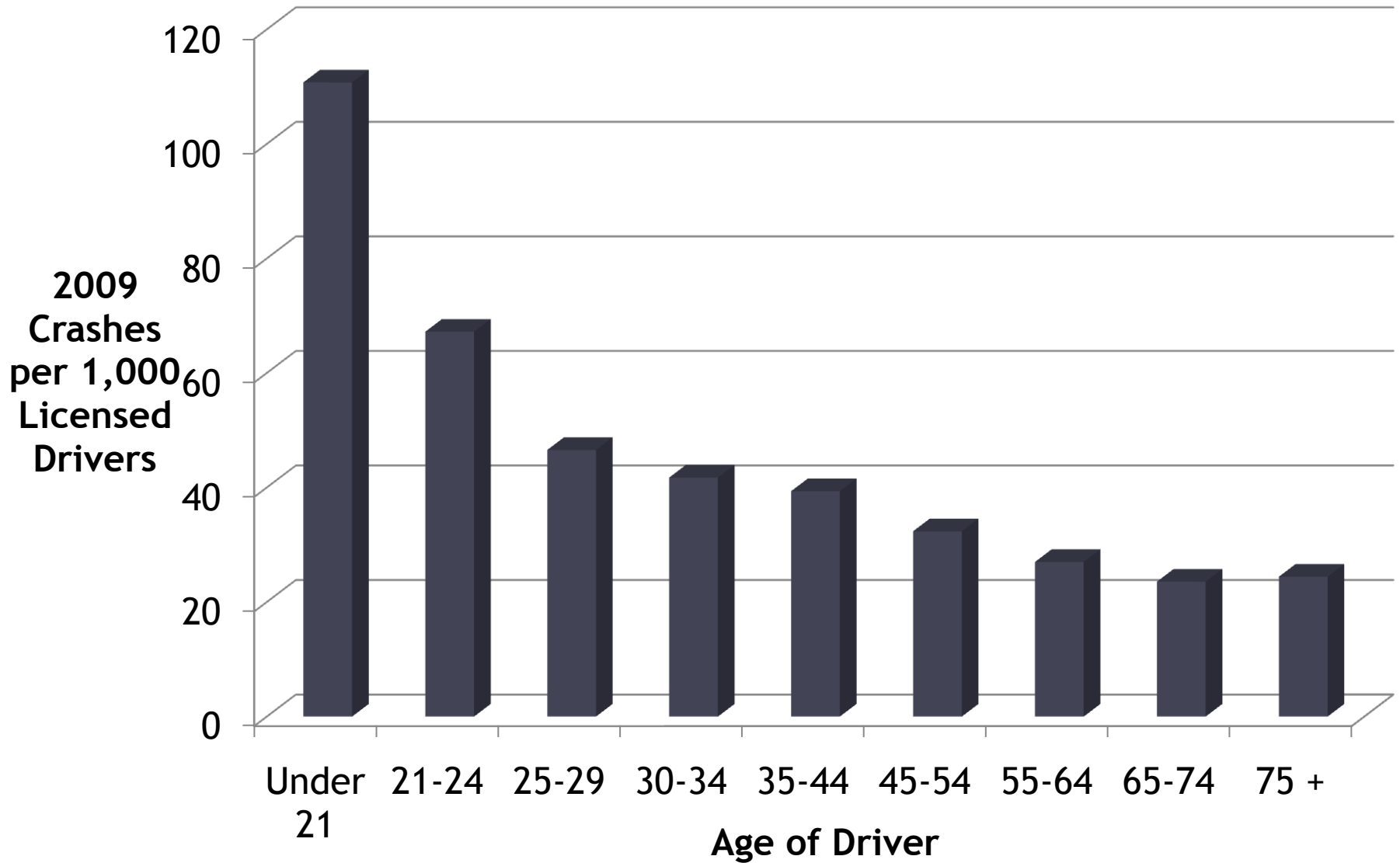
2009 Young Driver Involved Summary

- Young driver may not have been at fault & may not have suffered the injury.

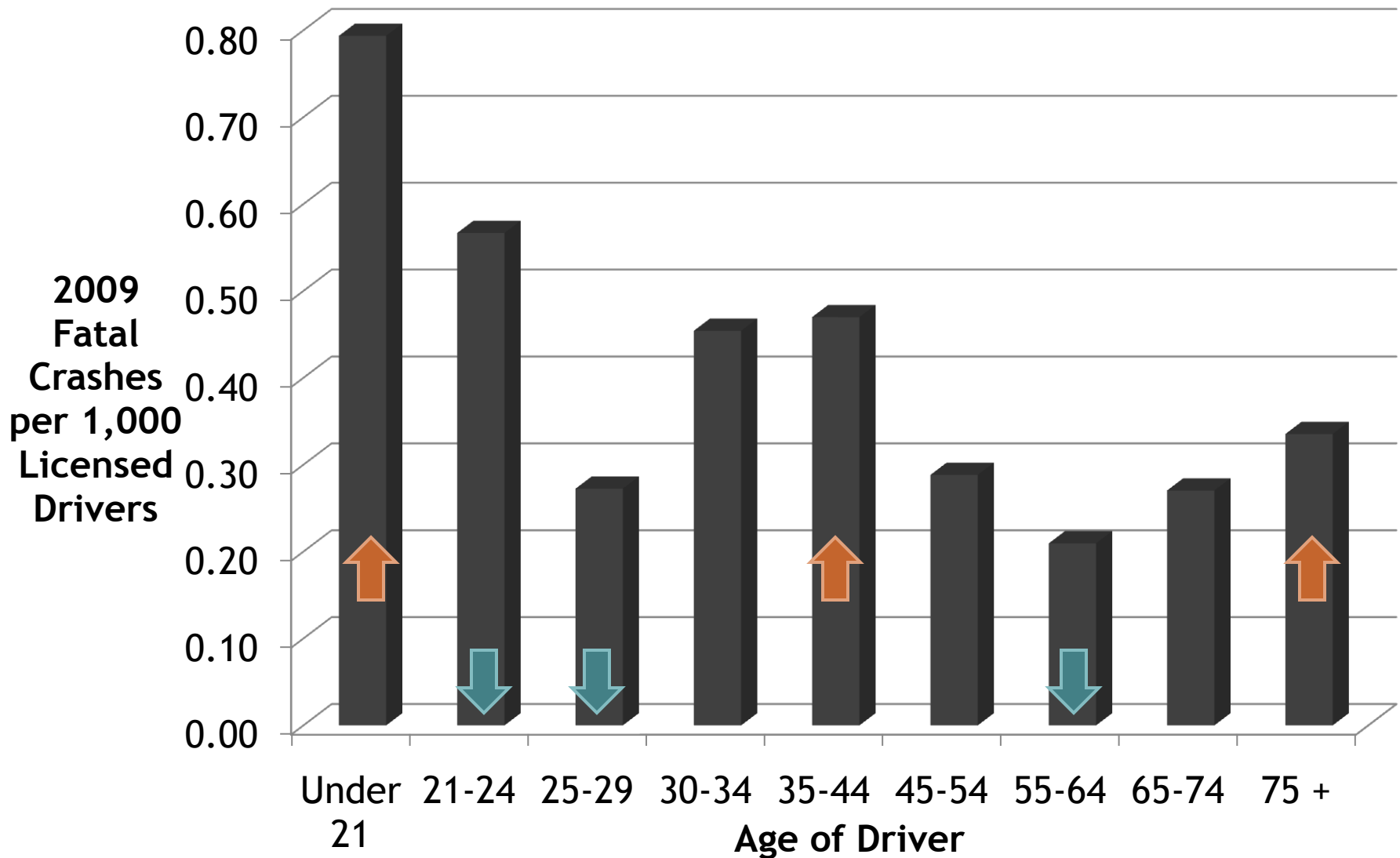
- Fatalities: 41  5
- Injuries: 2,153  300
- Severe injuries: 339  42

- Fatal crashes: 40  9
- Injury crashes: 1,435  185
- Property damage only crashes: 3,795  162

Crashes by Age of Driver



Fatal Crashes by Age of Driver



Traffic Records

MT Problem ID

Traffic Records Highlights

- Unifying State Traffic Records Systems
 - Systems: Crash, Roadway, Driver, Vehicle, Conviction/Adjudication, Injury Surveillance
 - Performance Areas: Accuracy, Completeness, Integration, Timeliness, Uniformity, Accessibility
- Traffic Records Strategic Plan
- MDT Traffic Safety Web Services

Traffic Records Highlights

- MCS PRISM & ECVISN Grants
- MHP Web-Based Crash Reporting
- EMS
- MDT Safety Information Management System

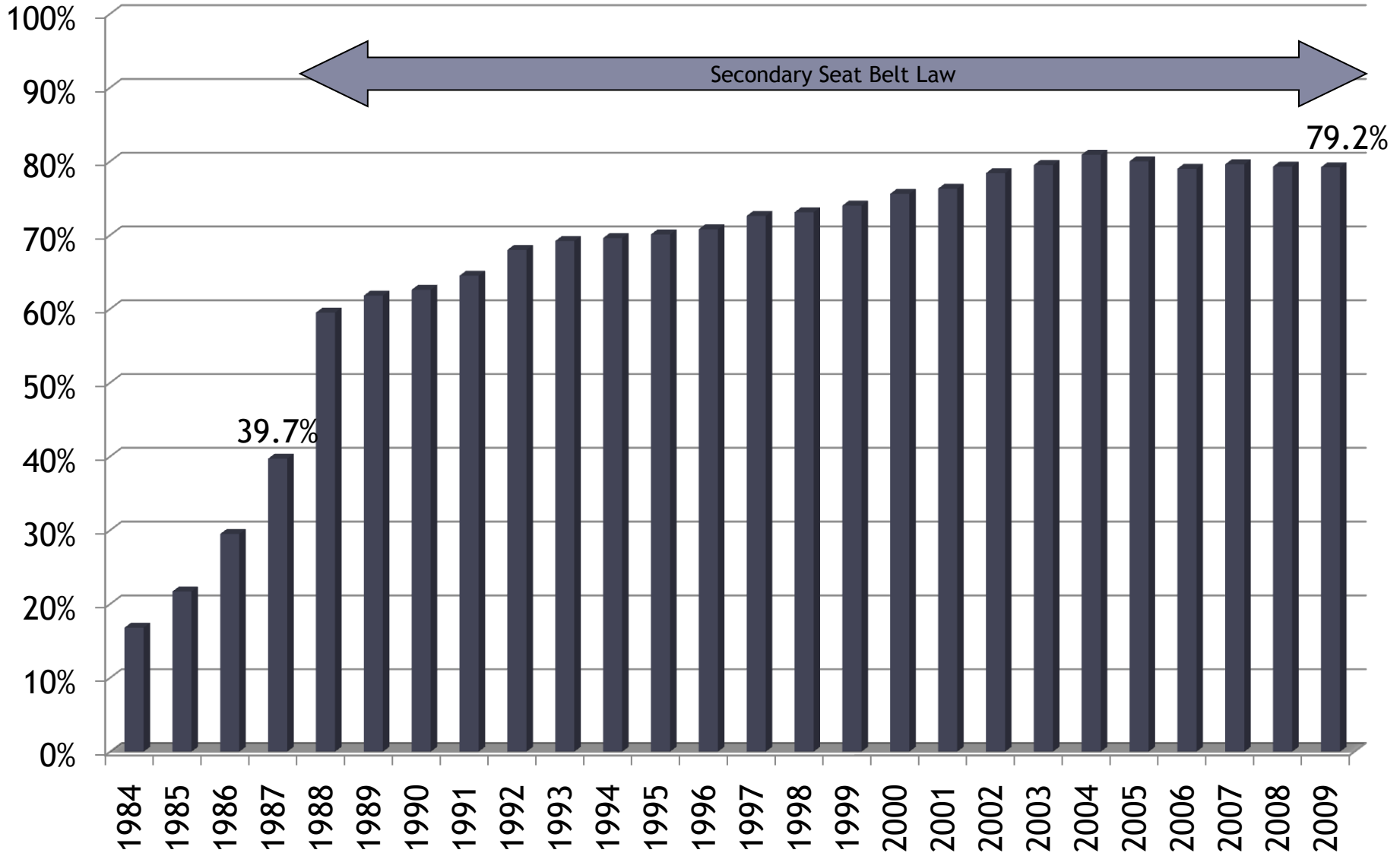
Seat Belts

MT Problem ID

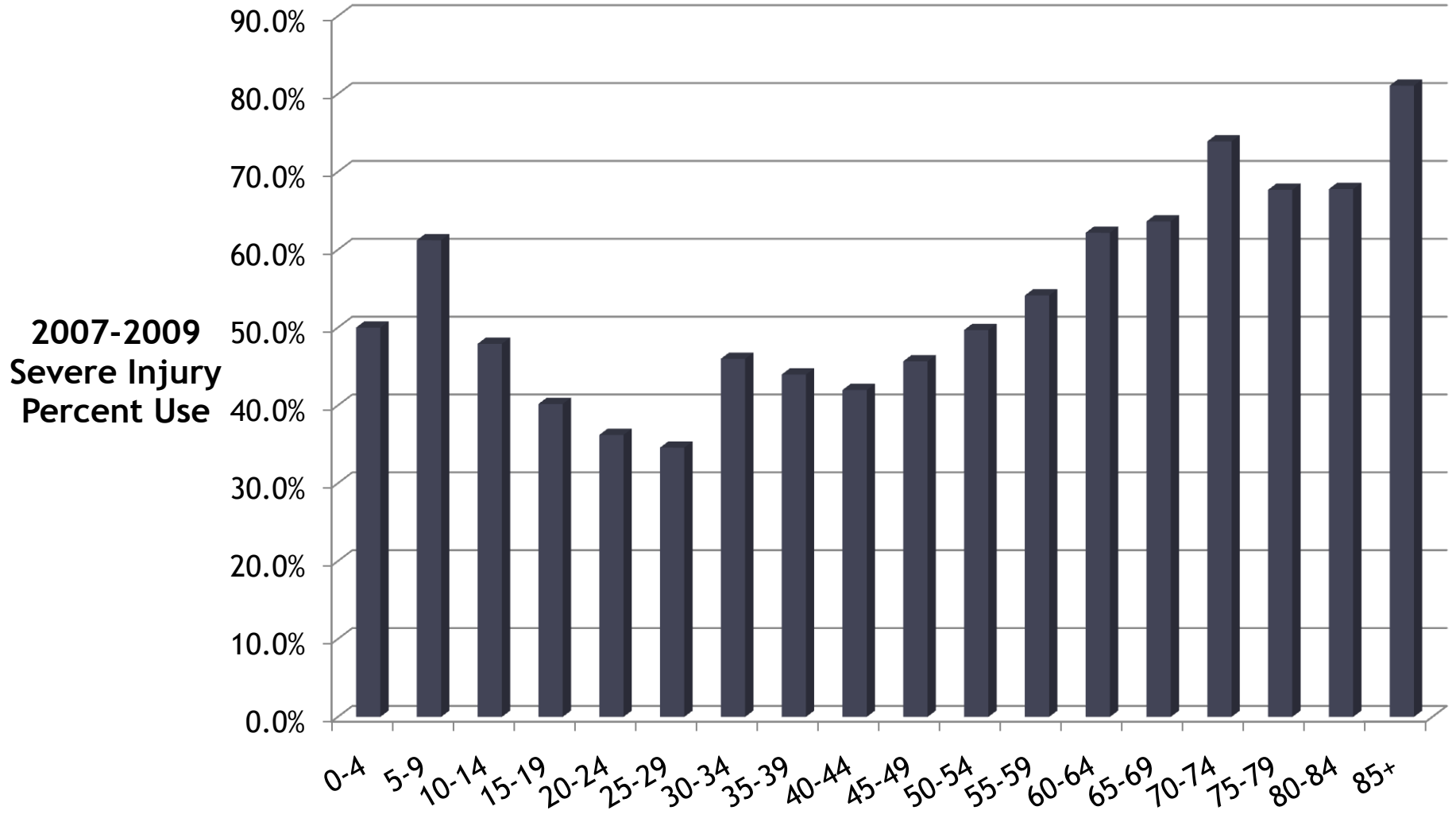
Safety Belt Use

- Increased Usage Could:
 - Save 20-30 lives with usage rate at 90%
 - Save 60-80 more lives if everyone wore their belt
- 2009 Severe Injuries Use
 - No/Improper Use: 487 (45.1%)
 - Proper Use: 527 (48.8%)
 - Unknown Use: 66 (6.1%)

Observed Seat Belt Use

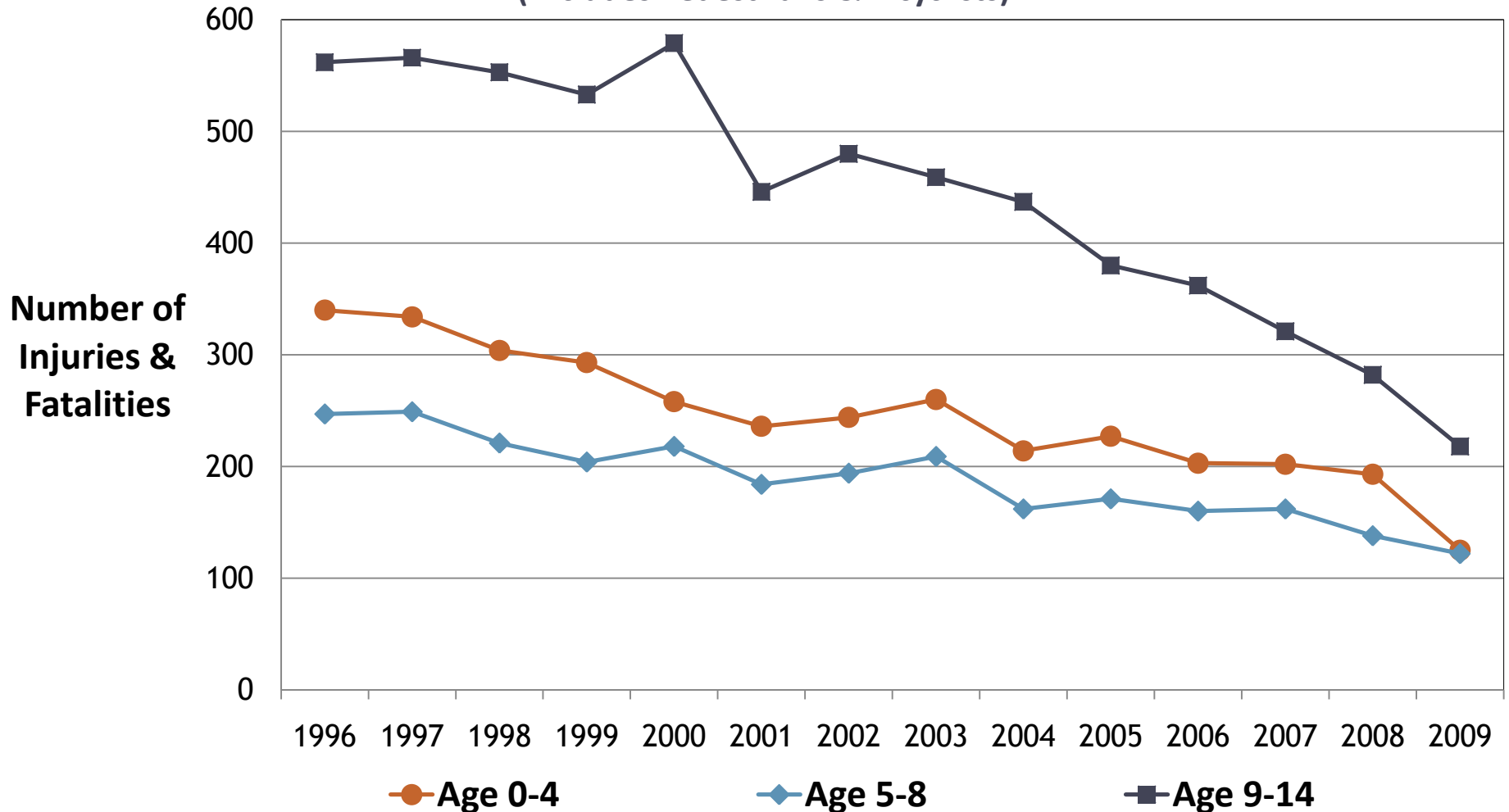


Restraint Use by Occupant Age for Fatal & Incapacitating Injuries



Young Occupant Injuries + Fatalities

Age Fourteen & Under
(Excludes Pedestrians & Bicyclists)



Motorcycles

MT Problem ID

2009 Motorcycle Summary

- Motorcyclists do not include ATV riders or snowmobilers.

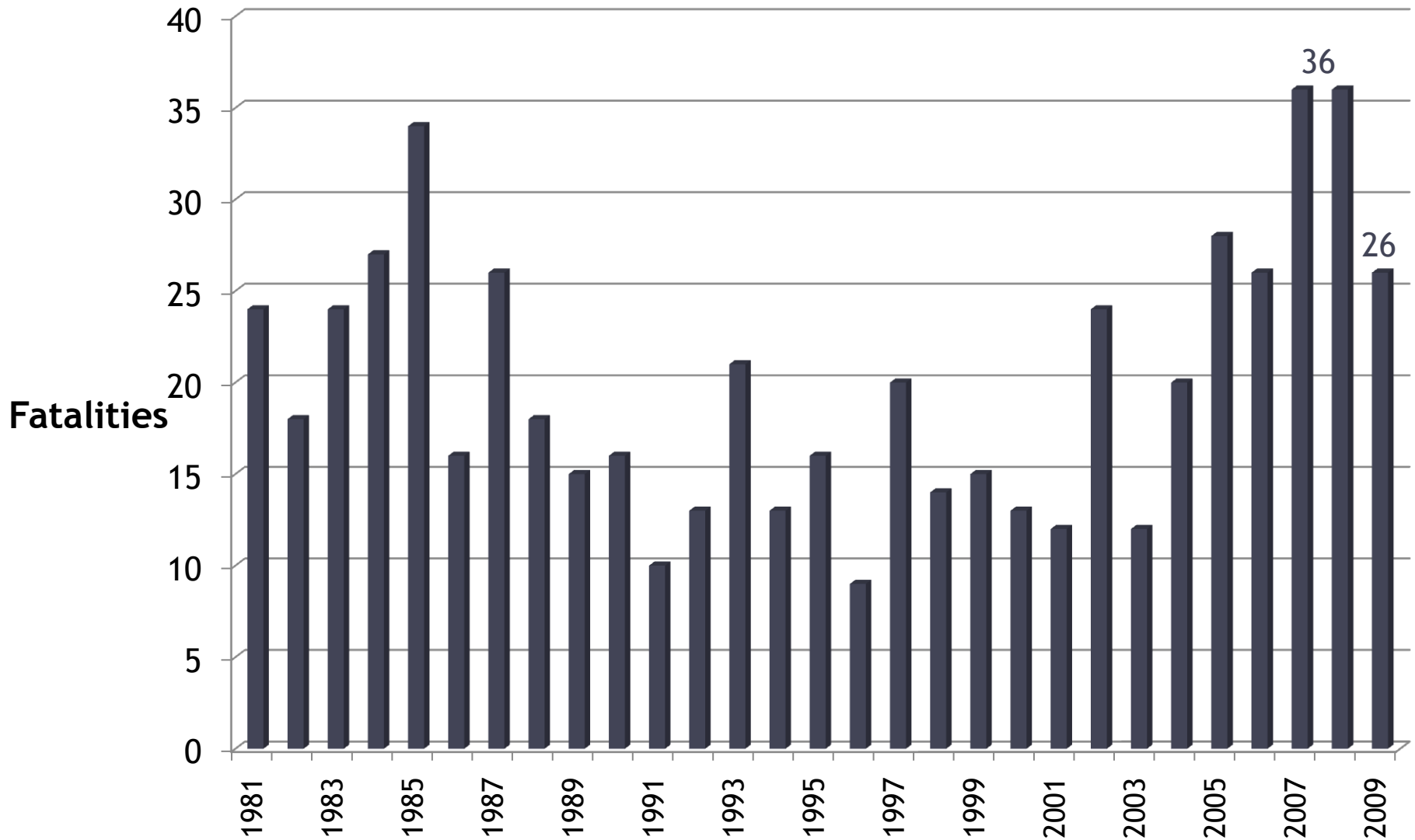
- Fatalities: 26 ↓10
- Injuries: 371 ↓57
- Severe injuries: 165 ↓43

- Fatal crashes: 25 ↓11
- Injury crashes: 333 ↓36
- Property damage only crashes: 77 ↓20

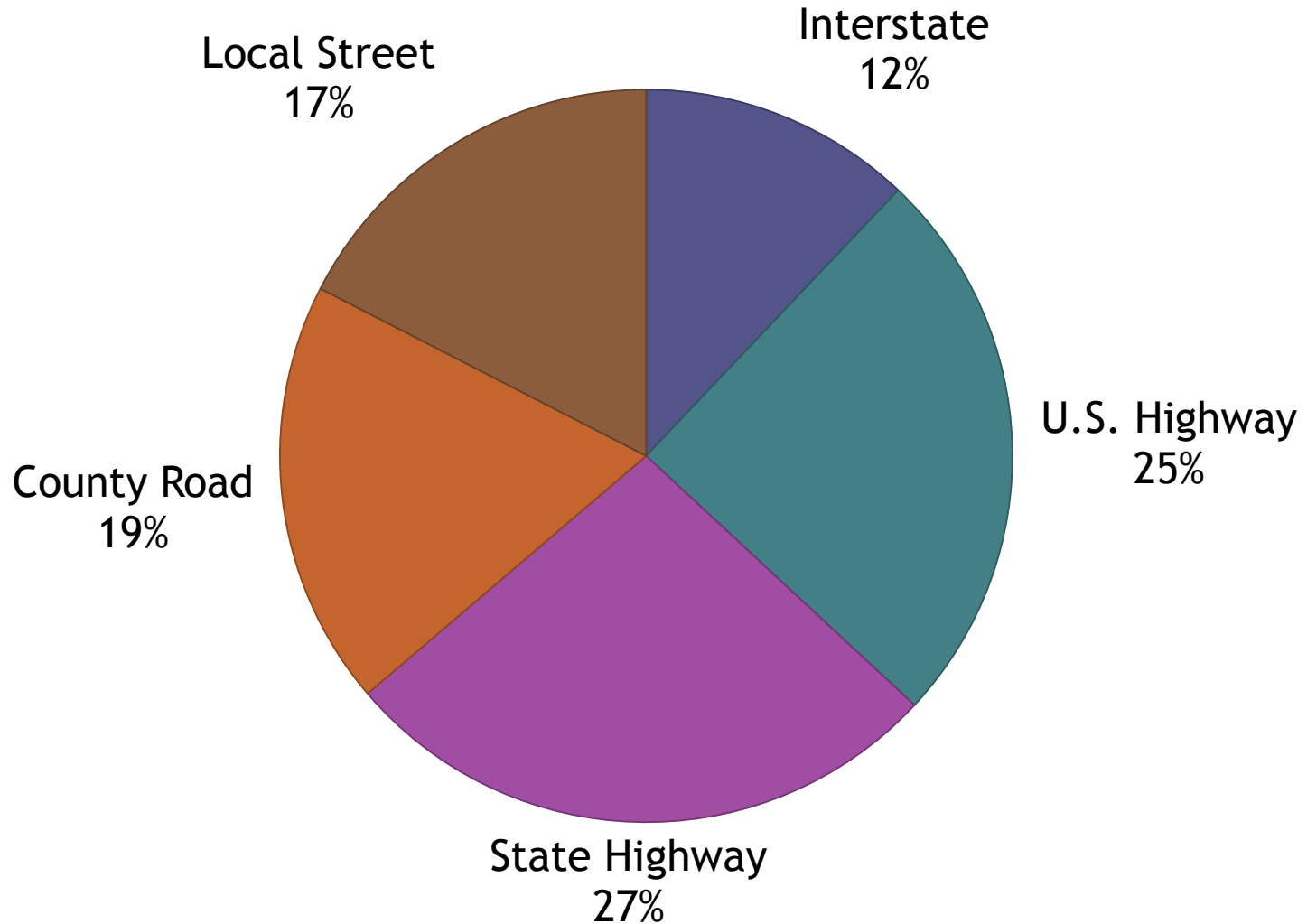
2009 Motorcycle Summary (cont.)

- Number of vehicles in severe motorcycle crashes:
 - Motorcycle only = 107
 - Motorcycle + other vehicle = 42
- Motorcyclists in crashes using a helmet: 12.3%
- Typical age of motorcyclist fatality: 45-64

Motorcyclist Fatalities



Severe Motorcycle Crashes By Road Type









Truck Crashes

MT Problem ID

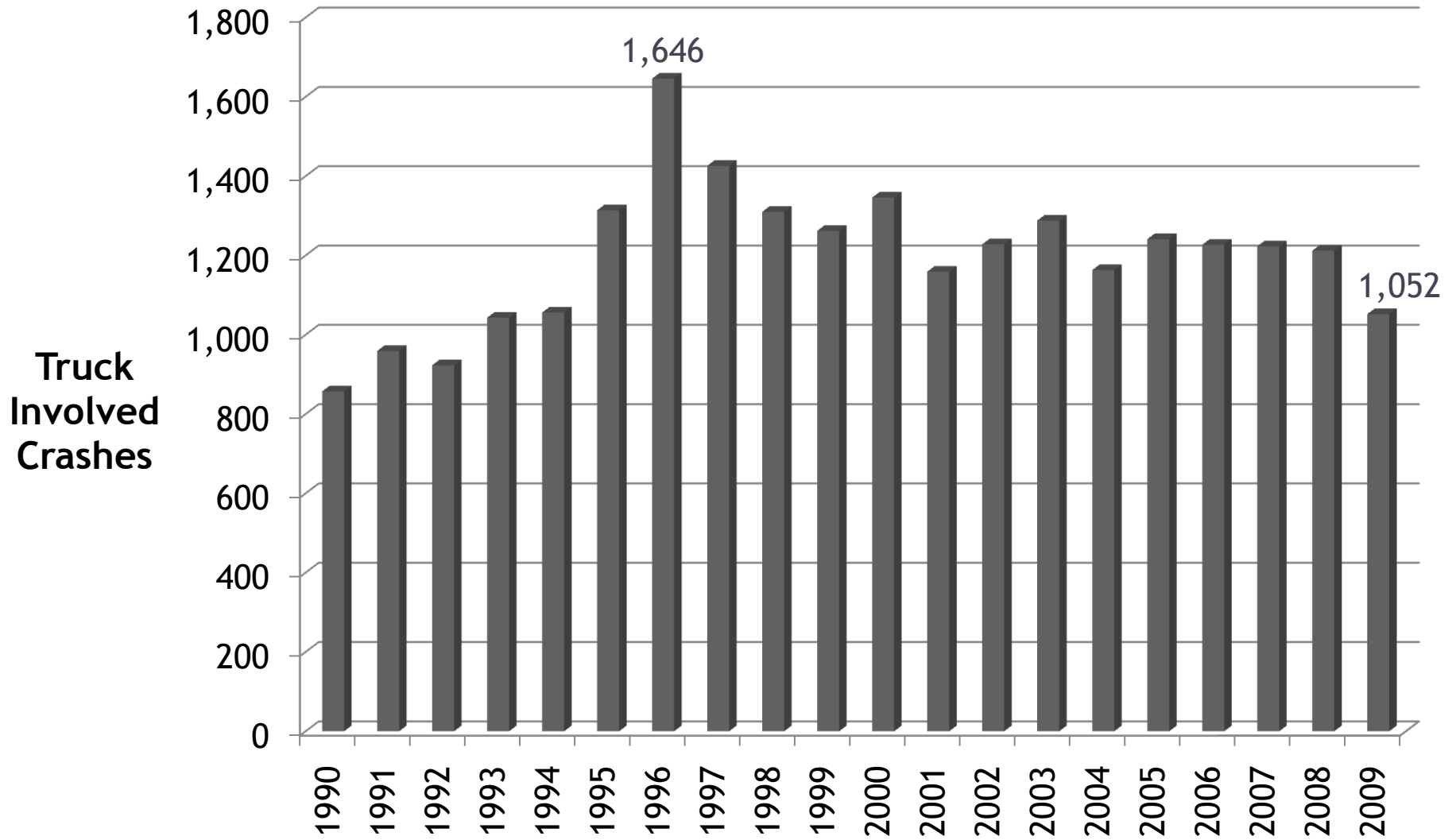
Truck Involvement in Crashes

- Truck drivers may not have been at fault & truck occupants may not have suffered the injury.

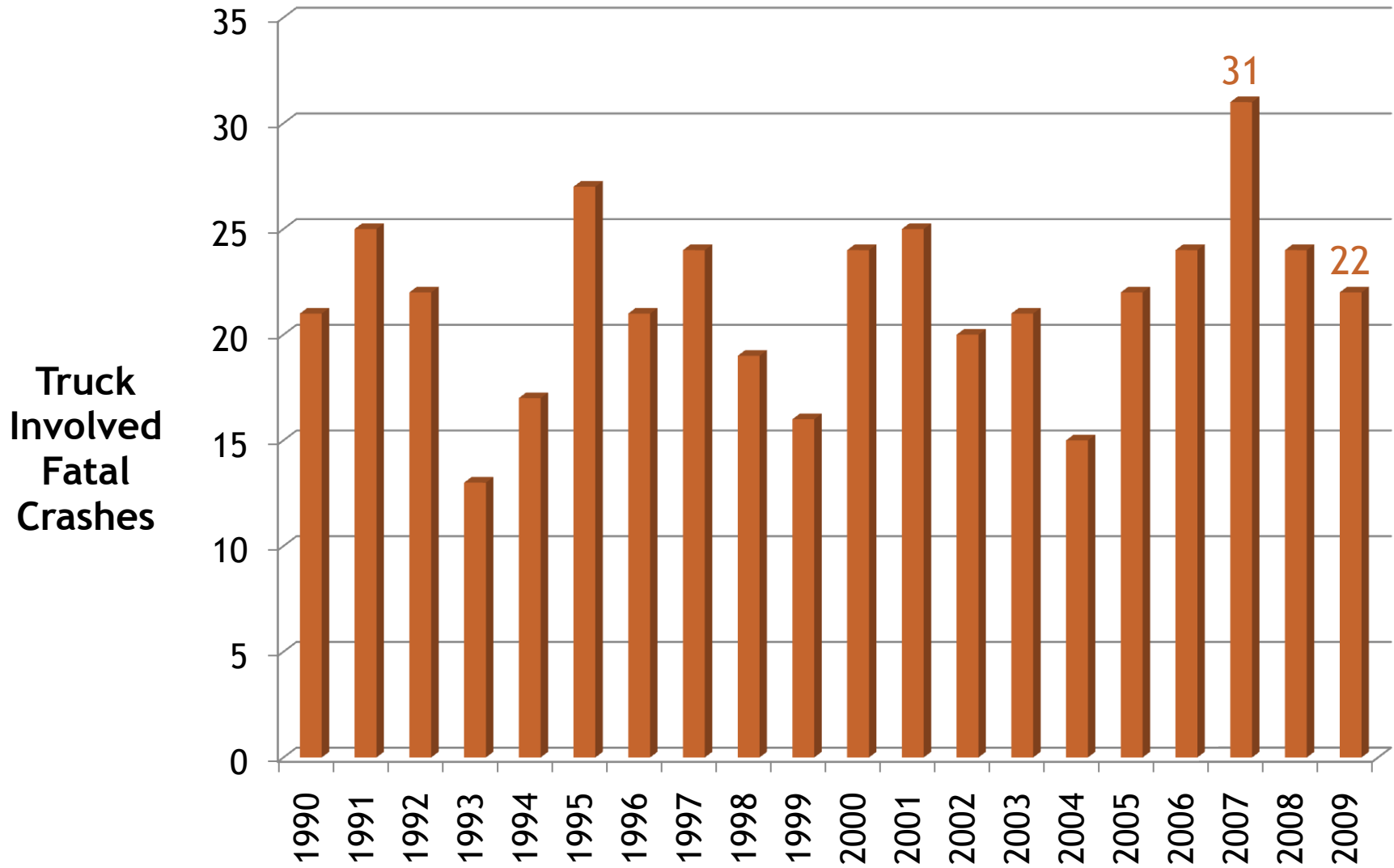
- Fatalities: 26  1
- Injuries: 256  144
- Severe injuries: 71  26

- Fatal crashes: 22  2
- Injury crashes: 205  69
- Property damage only crashes: 825  90

Truck Involved Crashes



Truck Involved Fatal Crashes



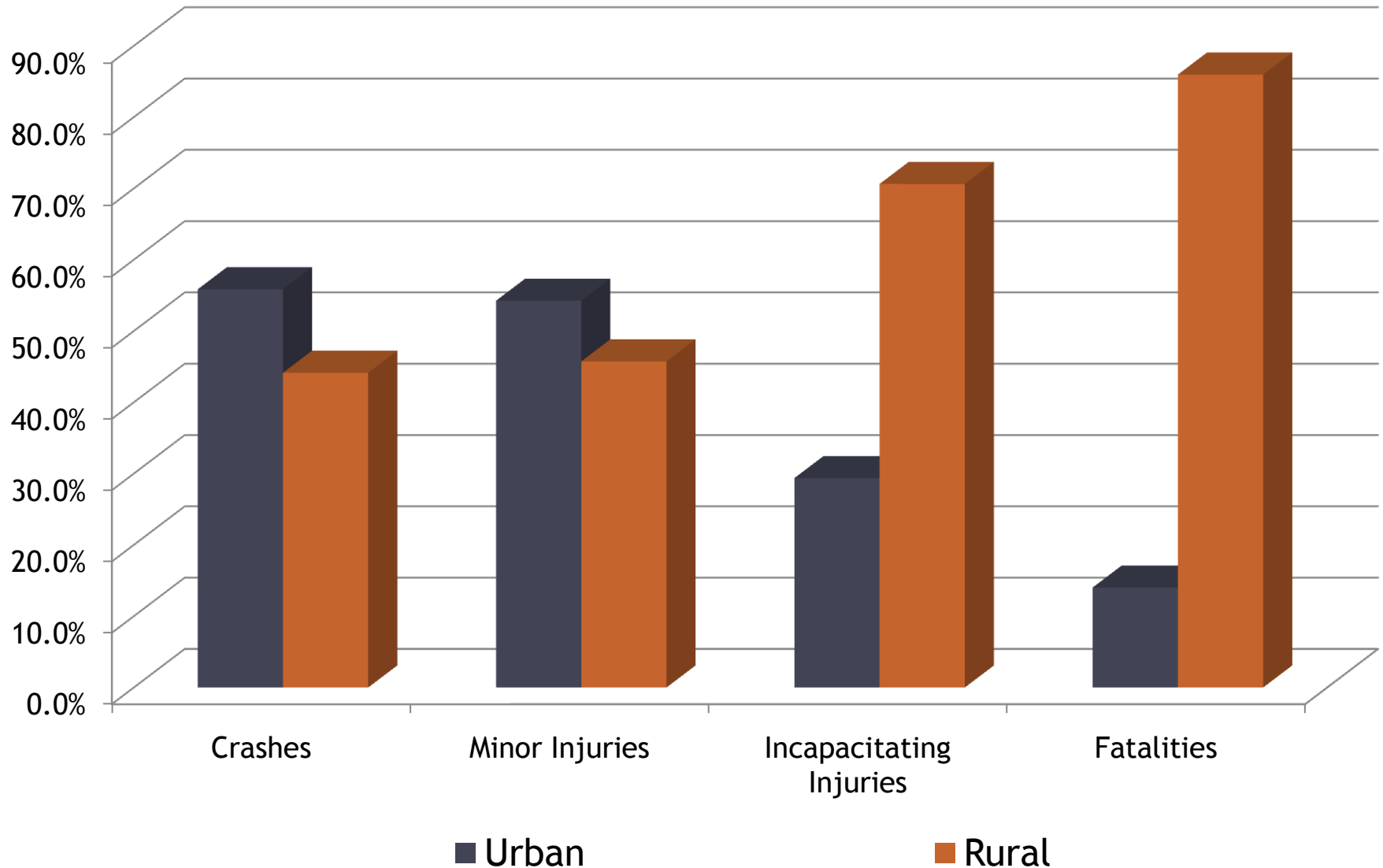
EMS - Emergency Medical Services

MT Problem ID

EMS Data

- HIRMS & OPHI - Health Information and Resource Management System & On-line Pre-Hospital Information
- Trauma Registry
- Advanced Crash Notification

Urban vs Rural Highlights









Older Drivers (65 & Over)

MT Problem ID

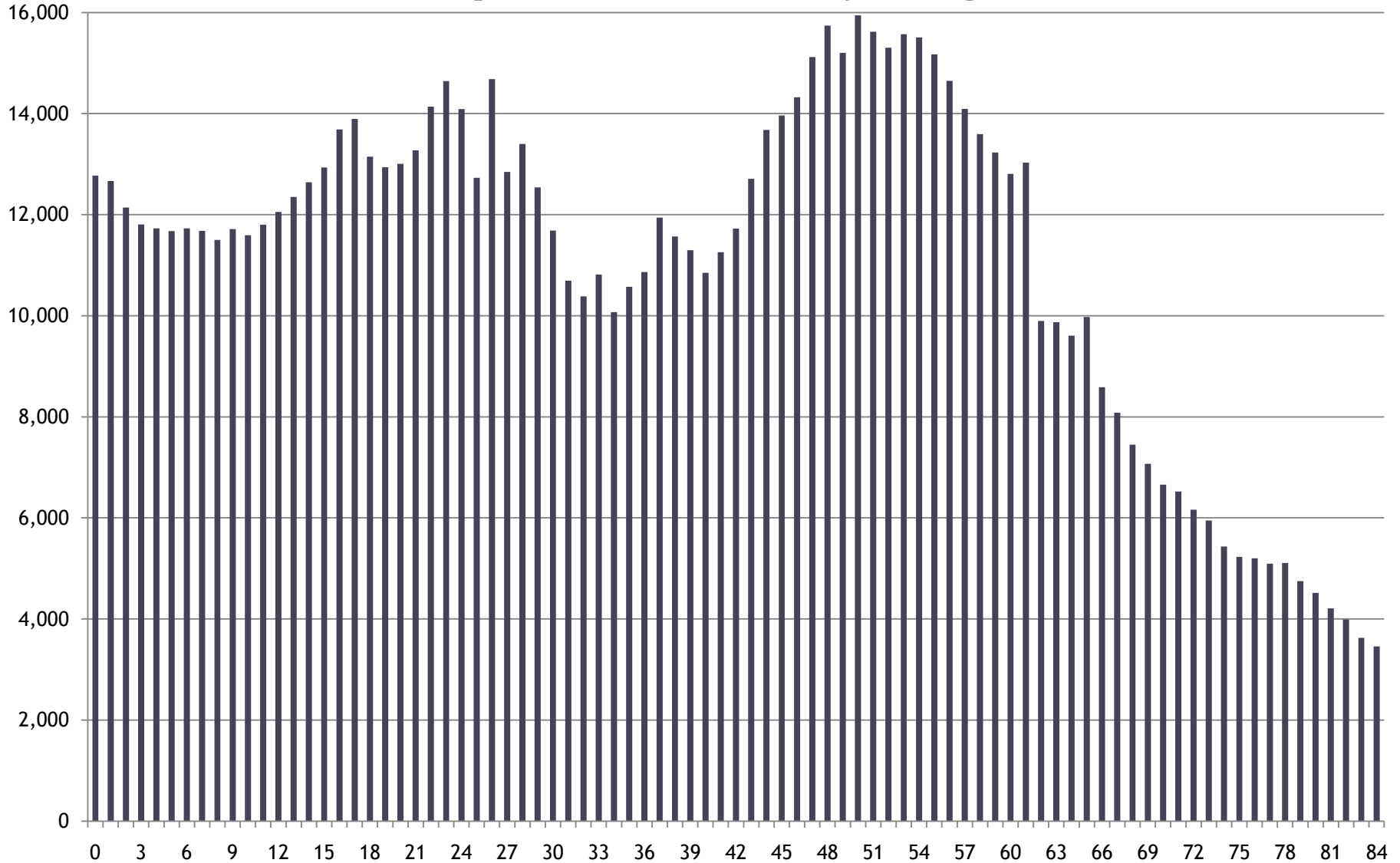
2009 Older Driver Involved Summary

- Older driver may not have been at fault & may not have suffered the injury.

- Fatalities: 38 4
- Injuries: 992 202
- Severe injuries: 164 35

- Fatal crashes: 35 3
- Injury crashes: 700 93
- Property damage only crashes: 2,090 74

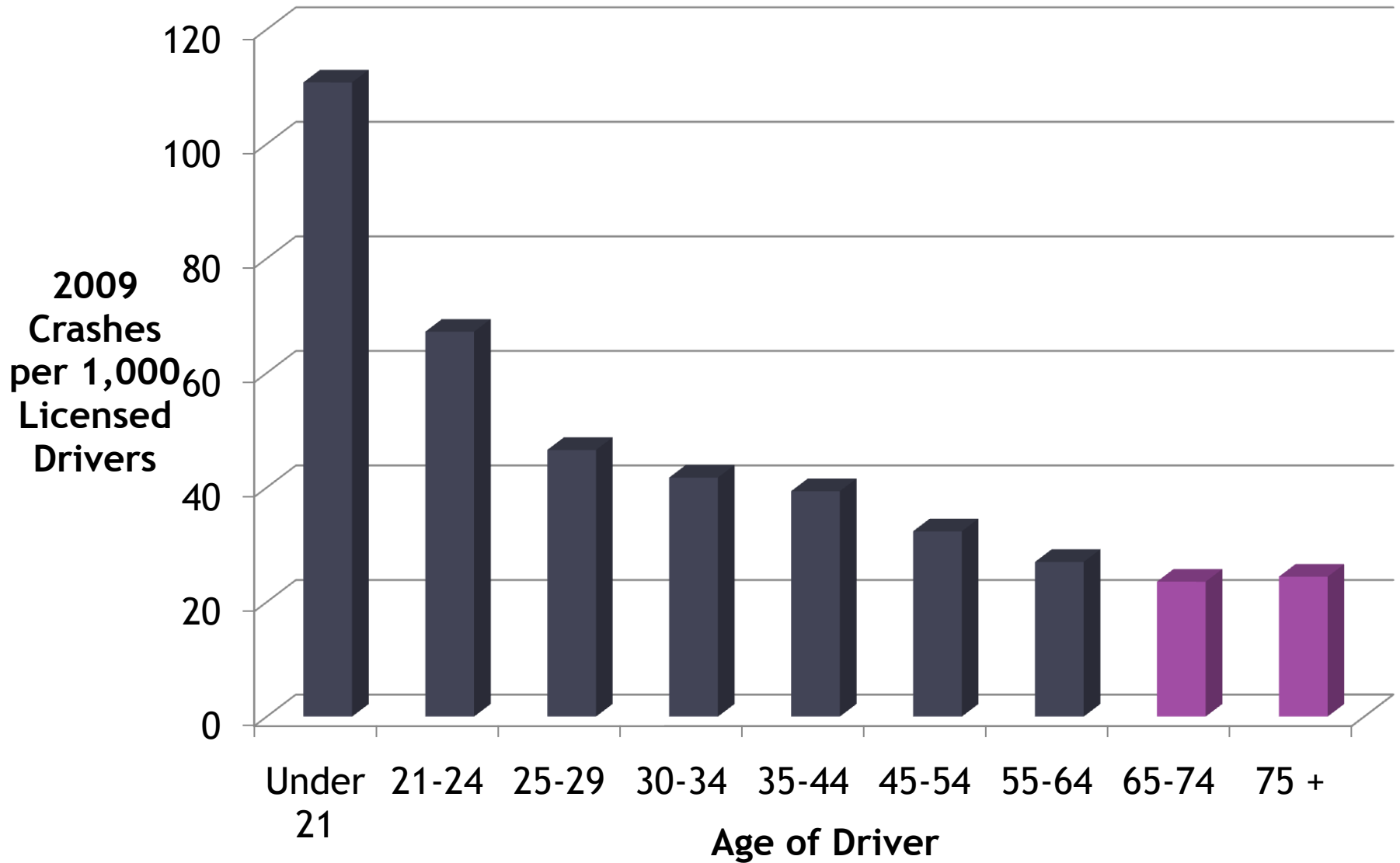
Montana Population by Age



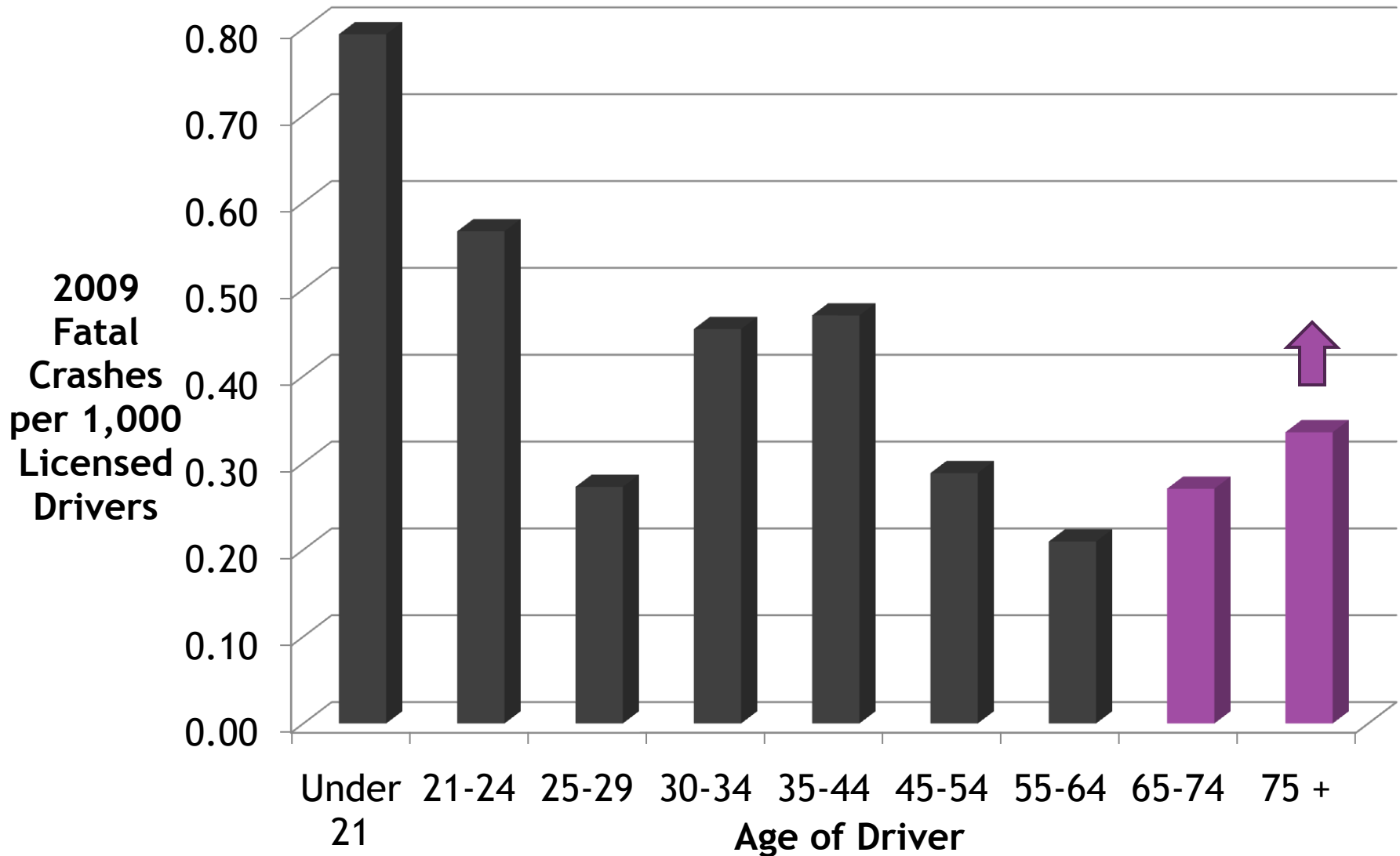
Older Driver Highlights

- Older drivers are typically safe drivers.
 - Not usually using new technology that distracts younger drivers.
 - More cautious.
- Older drivers typically have difficulty with:
 - Left turns
 - Vision - especially at night
 - Sign confusion

Crashes by Age of Driver



Fatal Crashes by Age of Driver








Alcohol and/or Drugs

MT Problem ID

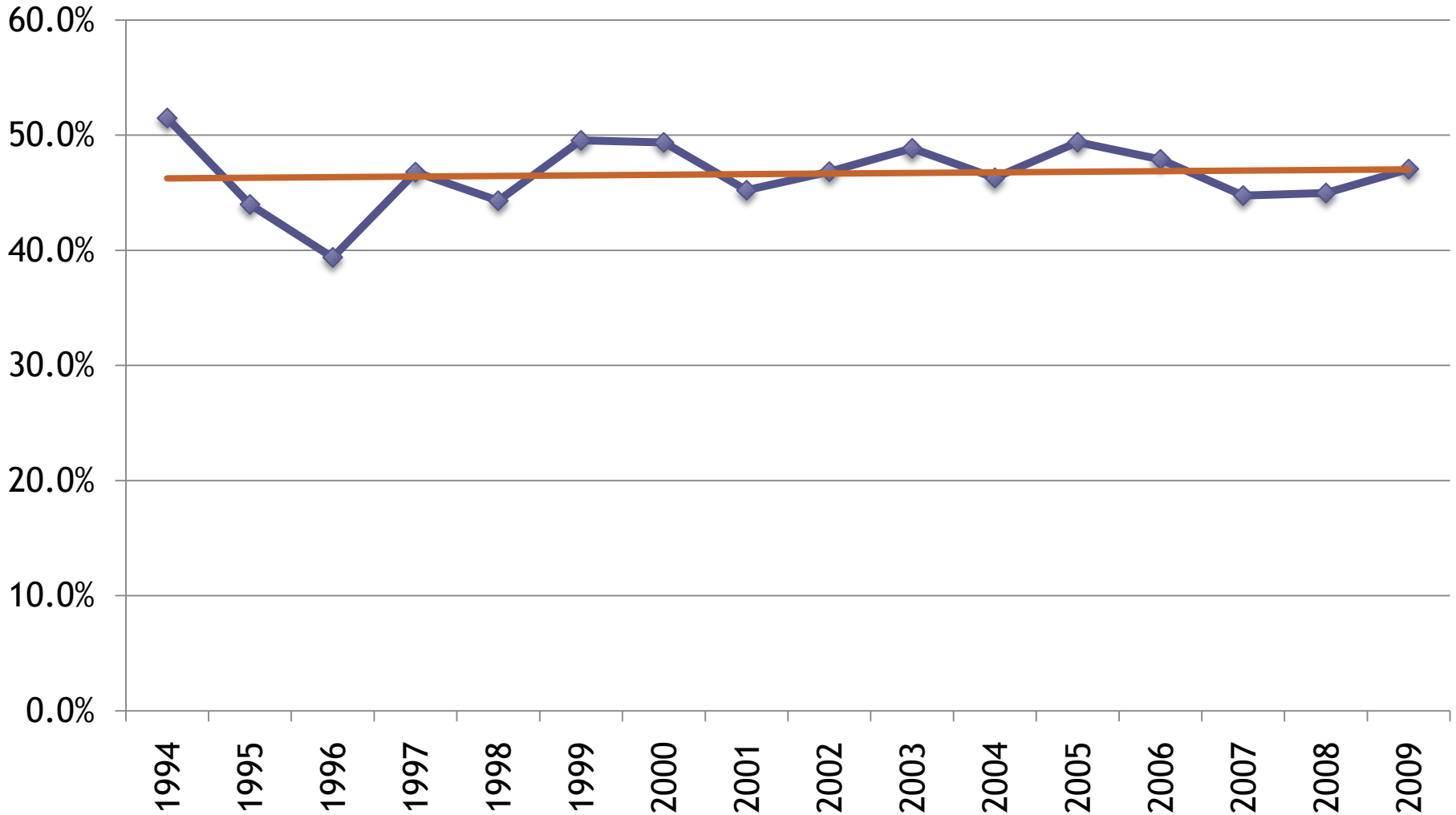
2009 Alcohol/Drug-Related Summary

- Alcohol-Related = BAC 0.01+ (if known) or law enforcement believes driver was using alcohol and/or drugs.

- Fatalities: 105 1 preliminary data
- Injuries: 1,319 326
- Severe injuries: 396 102

- Fatal crashes: 94 ~~~ preliminary data
- Injury crashes: 904 191
- Property damage only crashes: 1,148 14

Alcohol-Related Fatalities as a Percent of All Fatalities



Alcohol/Drug-Related Crashes by Age of Driver

