

# NATIVE AMERICAN CRASHES EMPHASIS AREA

---

2011 Annual Highway  
Safety Meeting  
June 8, 2011

# Native American Fatal Crashes

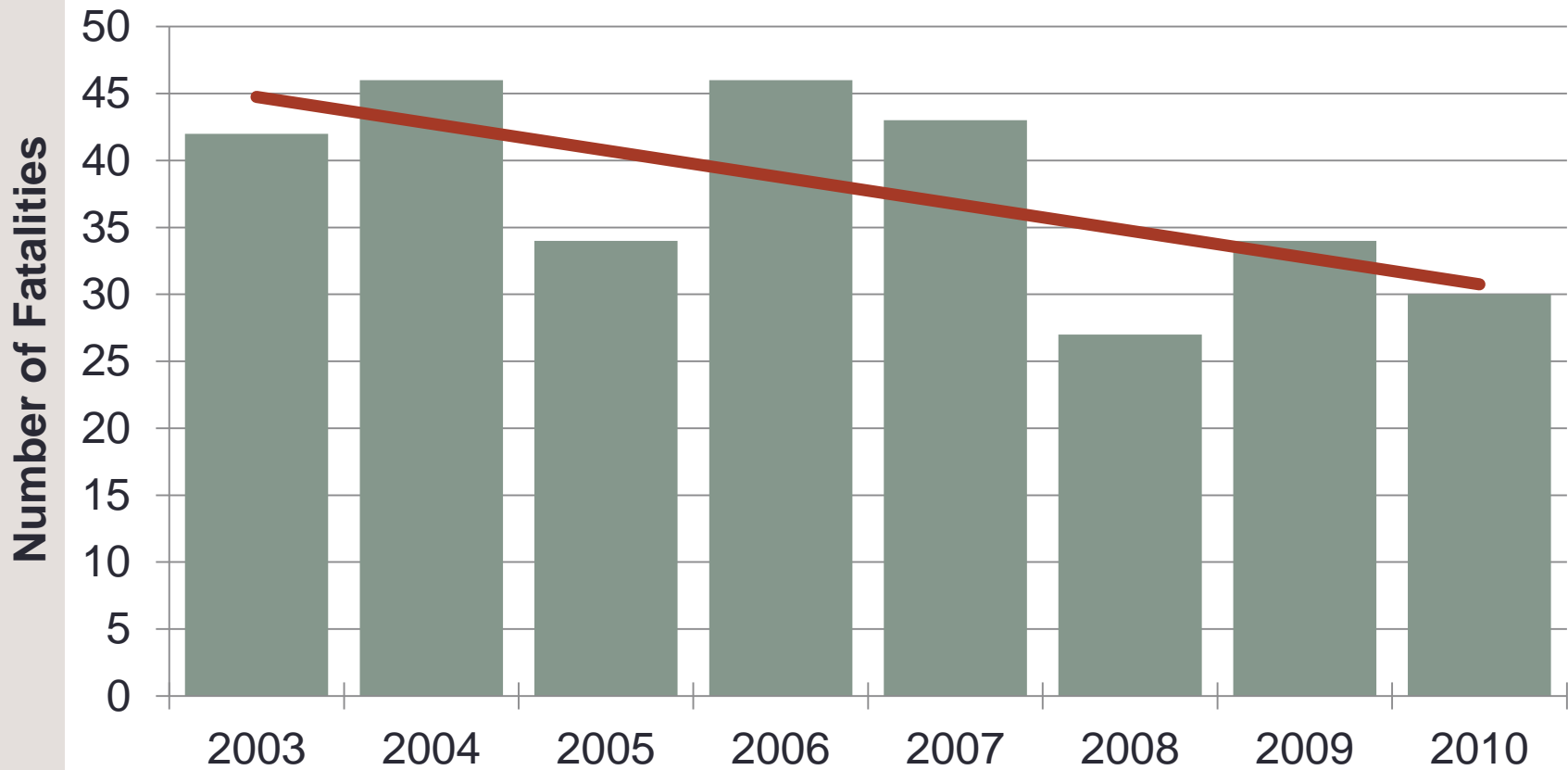


Historically Native Americans fatalities represented between 11.8% and 19.7% of all Montana fatalities

Native Americans make up only 6.2% of the population

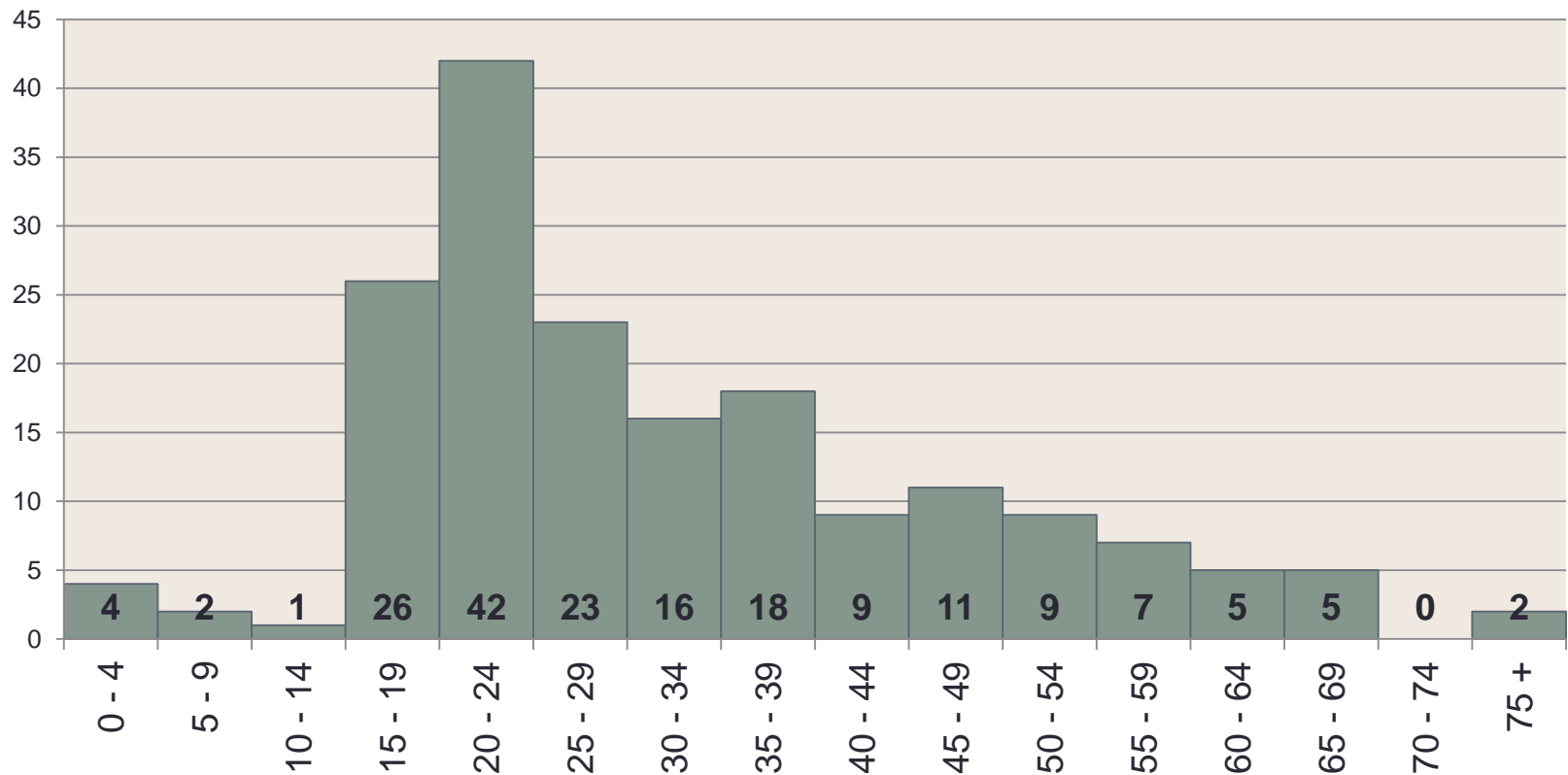
# Native American Fatalities

## Native American Fatalities



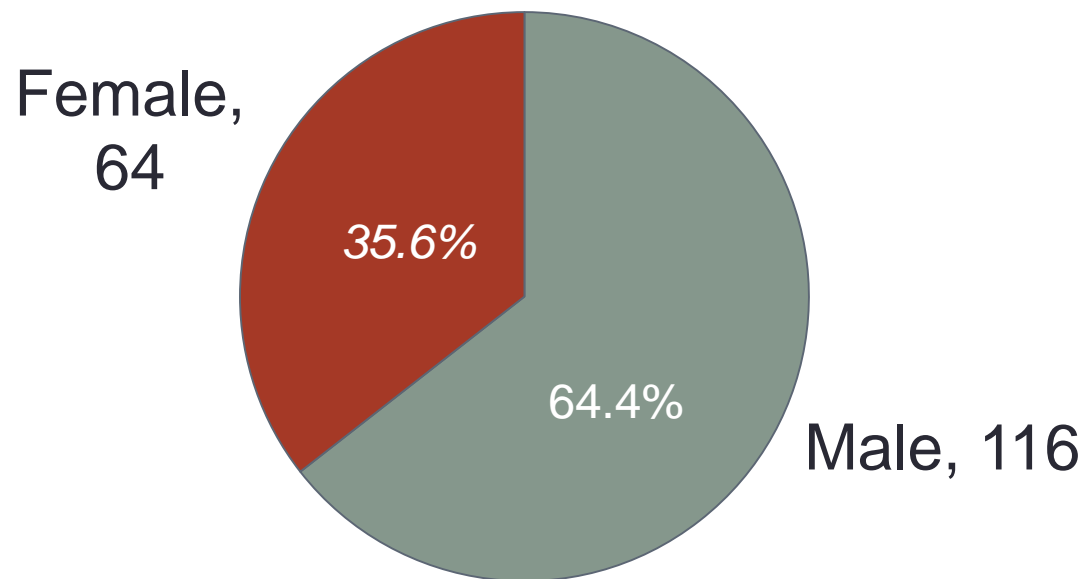
# Native American Fatalities by Age

**Age of Fatalities  
2006-2010**

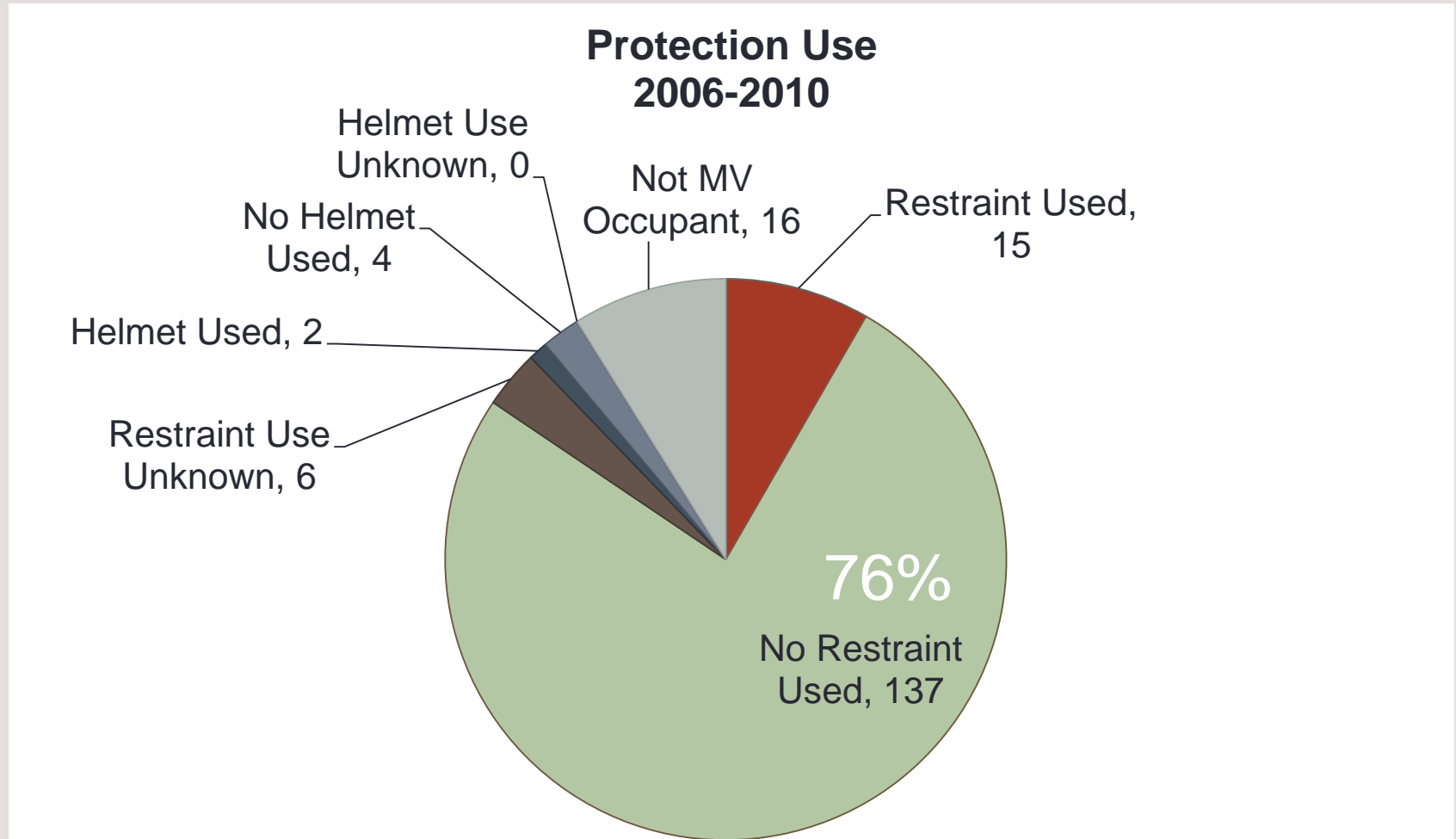


# Native American Fatalities by Gender

## Gender of Fatalities 2006-2010

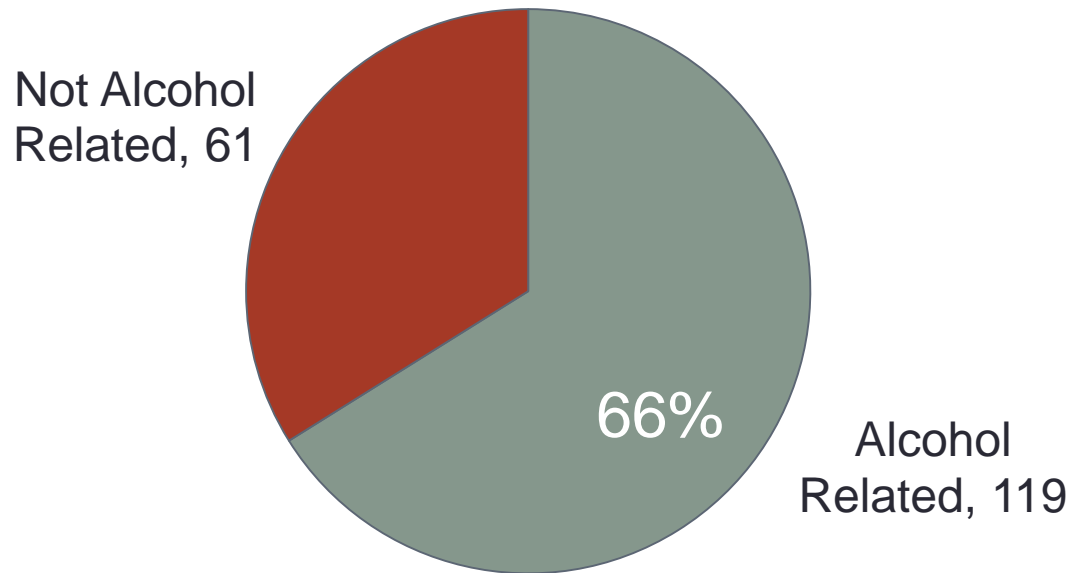


# Native American Fatalities – Protection Use



# Alcohol Related Fatalities

## Alcohol-Related Fatalities 2006-2010



# CHSP Strategies - Status

- NA-1: Pursue Systems/Policies to Support Data Sharing among Tribal, State and Local Governments
- NA-2: Support Development of Tribal Safety Plans for Each Reservation
- NA-3: Coordinate/Conduct a Tribal Transportation Safety Summit



# 2011 Tribal Summit

- Continue:
  - Work to address crash data needs and sharing
  - Annually conduct Tribal Safety meetings
  - Continue to support the development of tribal safety plans for reservations with interest
- New:
  - Support the development of safety countermeasures for safety issues faced on each reservation
  - Work to find solutions to engineering issues facing Tribal governments