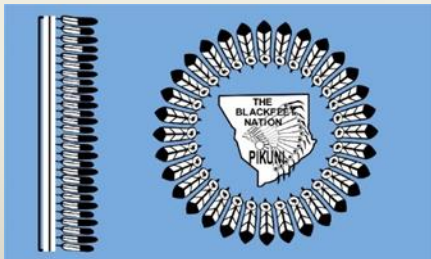


# 2014 Tribal Transportation Safety Summit



Blackfeet Safety Plan Development  
Don White, Tribal Transportation Planning Director  
October 14, 2014

# Purpose of Safety Plan

- To reduce deaths and injuries in tribal and other communities, and
- To coordinate and leverage resources to carry out safety strategies.

# Safety Committee

## Community Safety Representatives/Partners

- Blackfeet Transportation Planning
- Billings Area Indian Health Services
- Montana Highway Patrol
- Blackfeet EMS
- BIA
- MDT – GF District Traffic Engineer
- Browning Public Schools
- Blackfeet Law Enforcement
- Blackfeet Transportation
- Blackfeet SOAR Coordinator
- MDT SOAR Program Manager
- Glacier Co Maintenance/Co Commissioner
- NECI
- Tribal legislator
- Blackfeet Tribal Business Council
- MDT Planning

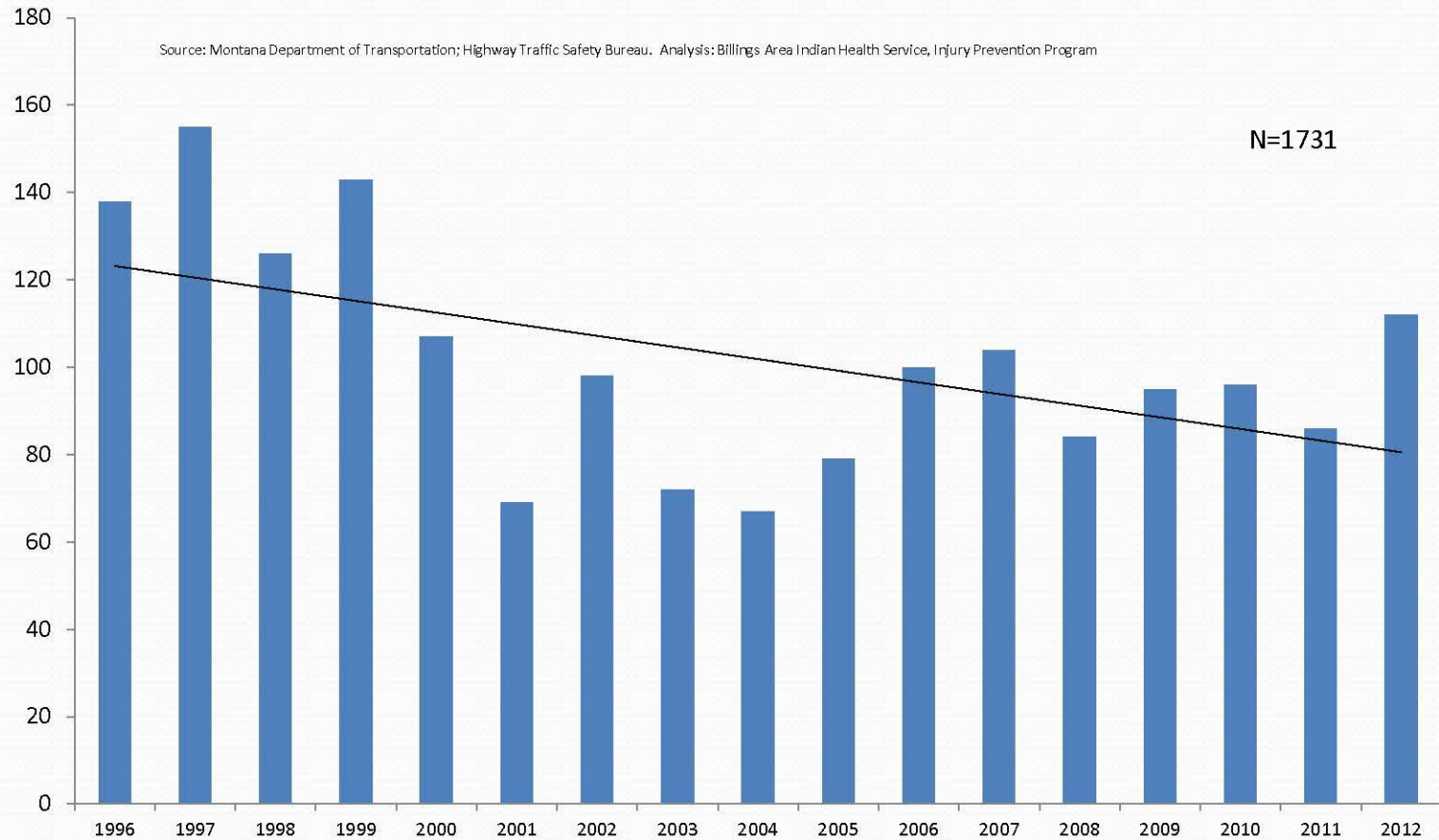
# Vision and Goal

To reduce crashes, injuries and deaths due to traffic crashes on the Blackfeet Reservation.

# Data Used

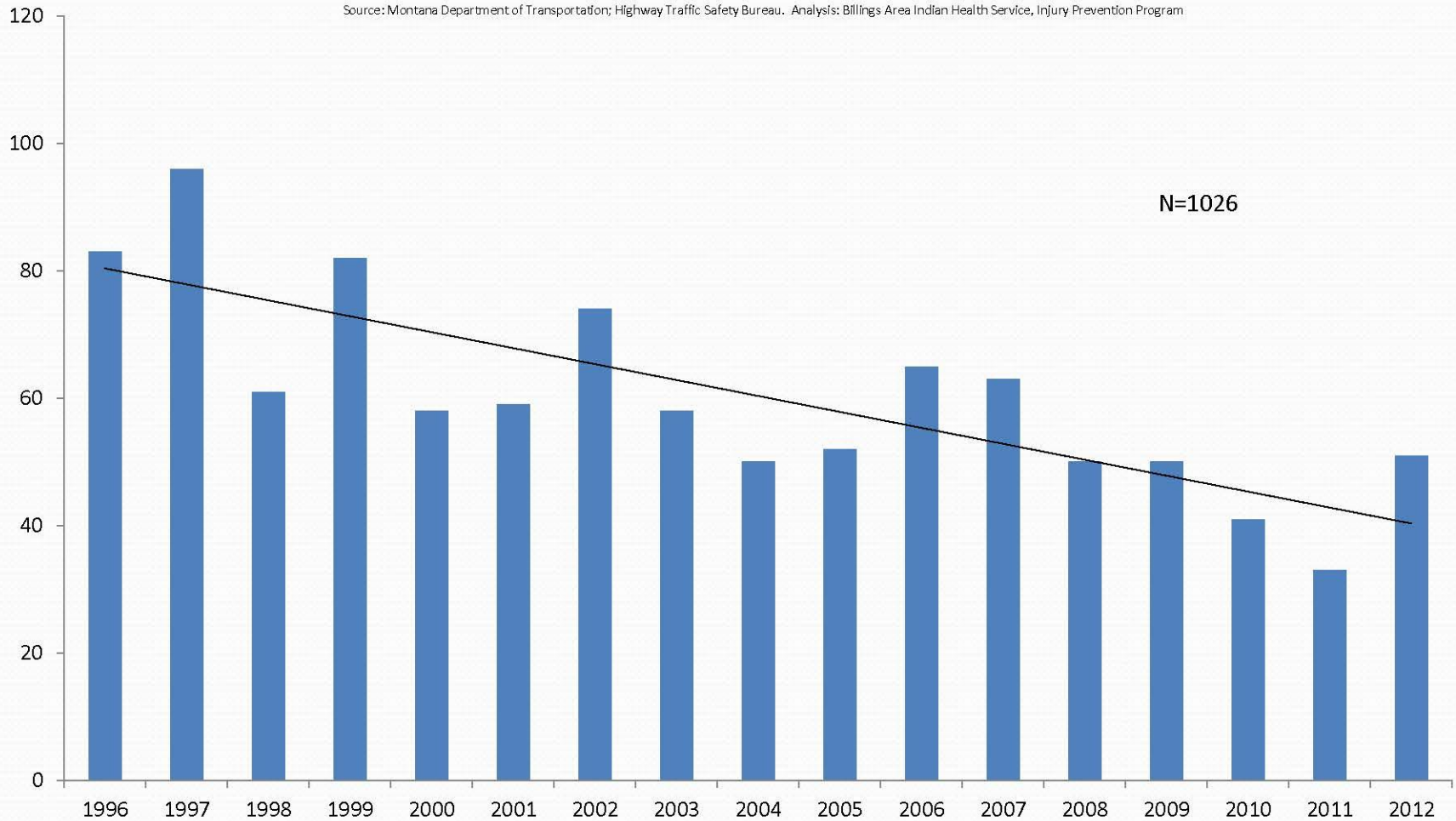
- Billings Area Indian Health
- MDT Crash data
  - reported to MHP
  - reported by MHP who are called out to investigate a fatal crash.

## Frequency of Motor Vehicle Crashes, by Year, Blackfeet Reservation, 1996-2012



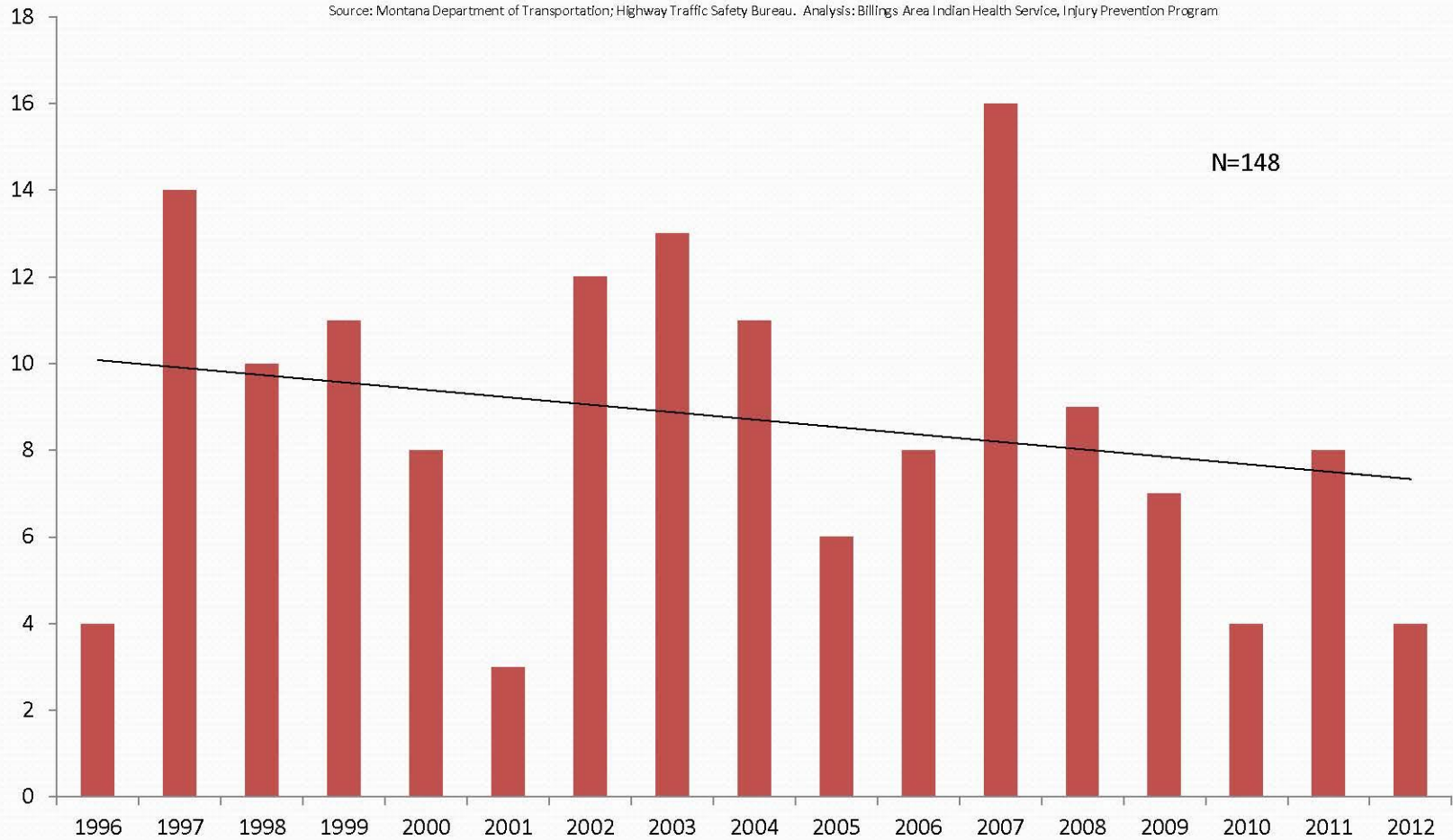
## Frequency of Injury-related Motor Vehicle Crashes, by Year, Blackfeet Reservation, 1996-2012

Source: Montana Department of Transportation; Highway Traffic Safety Bureau. Analysis: Billings Area Indian Health Service, Injury Prevention Program



## Frequency of Occupant Fatalities, by Year, Blackfeet Reservation, 1996-2012

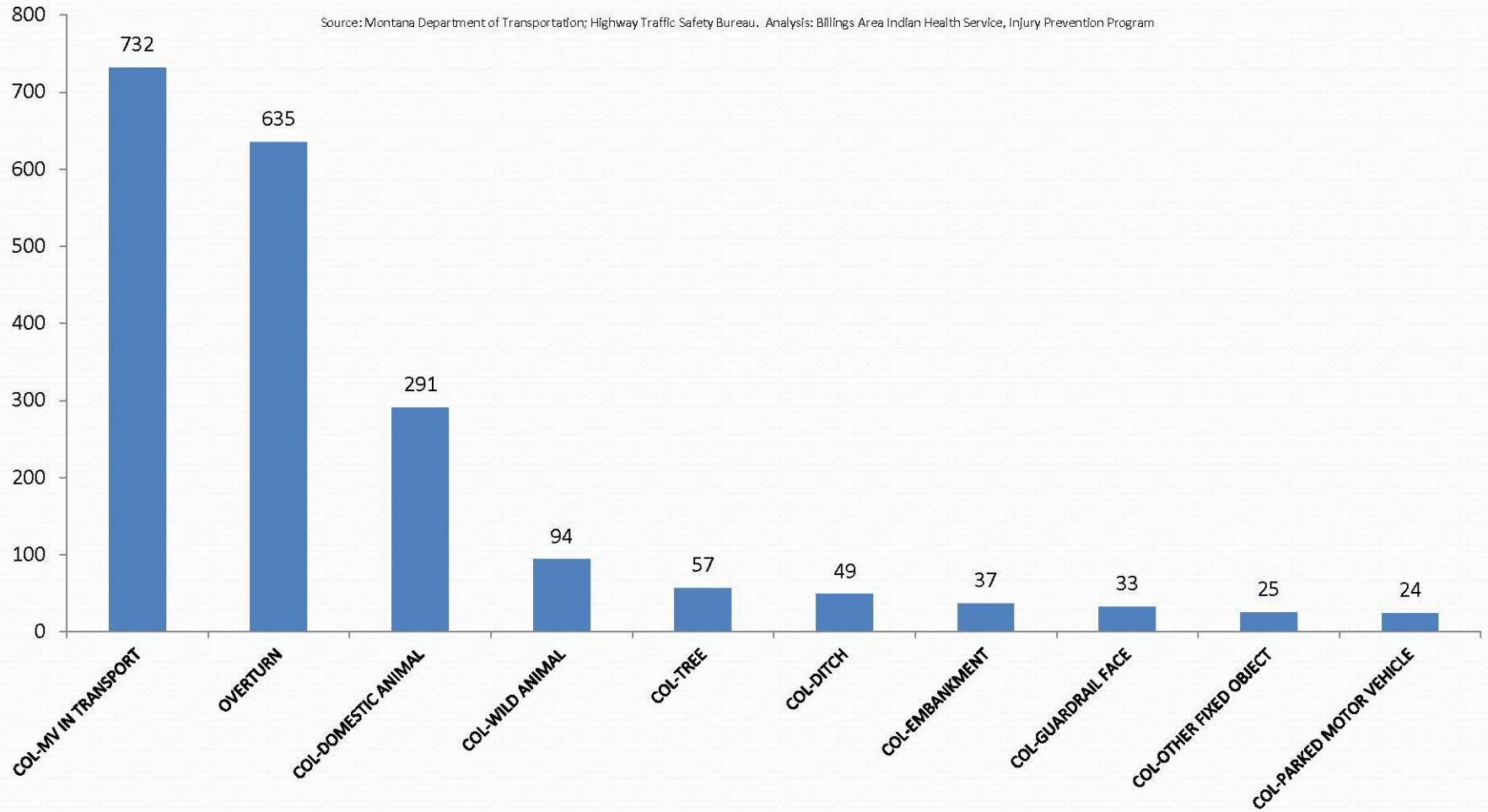
Source: Montana Department of Transportation; Highway Traffic Safety Bureau. Analysis: Billings Area Indian Health Service, Injury Prevention Program





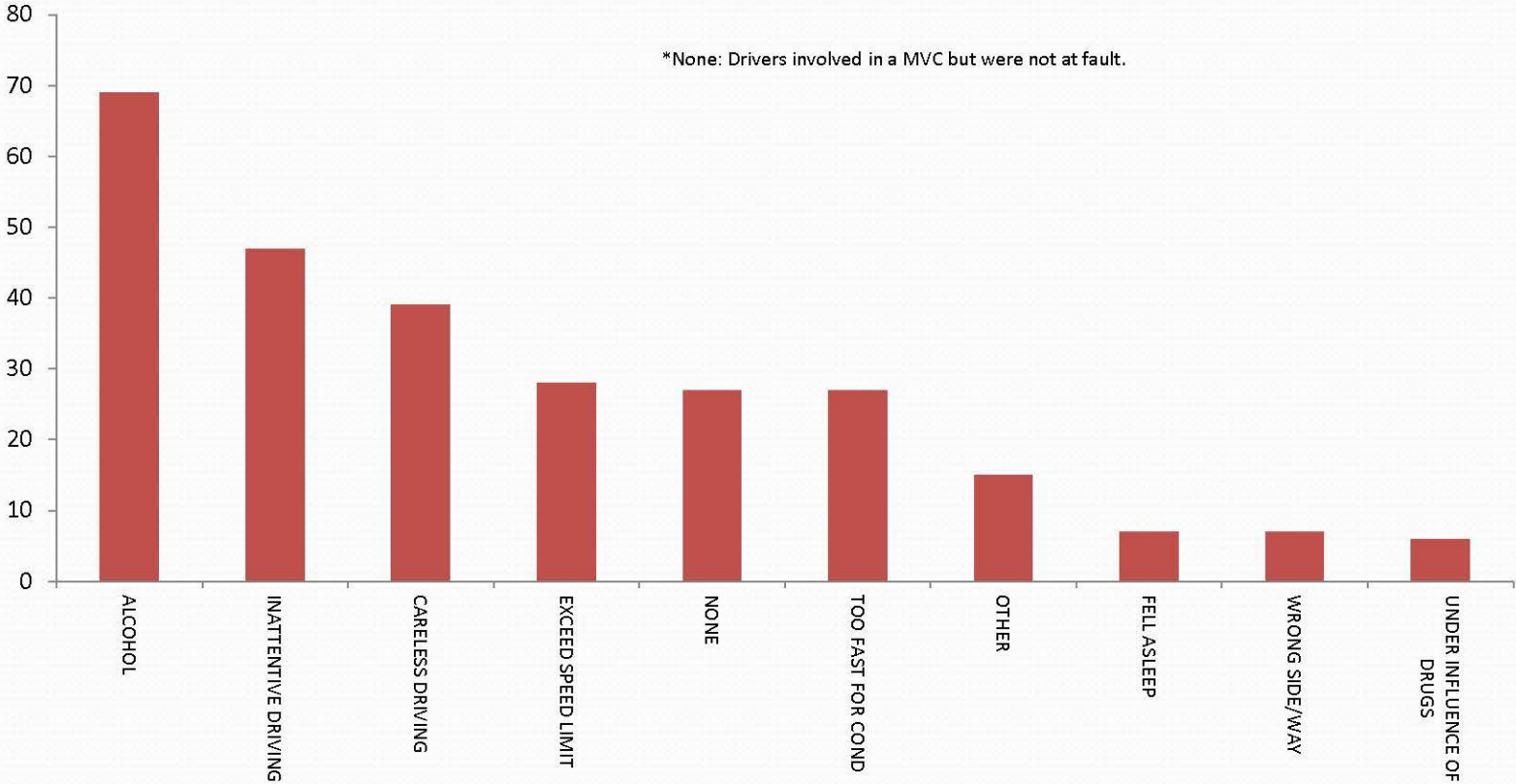
## Frequency of Motor Vehicle Crashes, by Top 10 Most Harmful Events, Blackfeet Reservation, 1996-2012

Source: Montana Department of Transportation; Highway Traffic Safety Bureau. Analysis: Billings Area Indian Health Service, Injury Prevention Program



# Frequency of Fatality-related Motor Vehicle Crashes, by Top 10 Contributing Circumstances, Blackfeet Reservation, 1996-2012

Source: Montana Department of Transportation; Highway Traffic Safety Bureau. Analysis: Billings Area Indian Health Service, Injury Prevention Program



# Existing Safety Programs

- Reconstruction US 89 to include roundabout & sidewalks/crosswalks
- Safe On All Roads program is active in community to educate on seatbelt use and dangers of impaired driving.
- RSA are being conducted on BIA routes
- TTP funds continue to be pursued for safety improvements, including striping and signing of BIA routes
- Received funding to develop a motor carrier safety program to address oversized/weight trucks
- Implemented a Primary seat belt on reservation.

# Safety Issues Identified

- Top contribution factors in injury crashes are:
  - Alcohol
  - Inattentive Drivers
  - Careless Drivers
  - Speeding
- Top most harmful events are:
  - Over turn vehicles,
  - Crashes with another vehicle or object
  - Crashes with domestic animals

# Emphasis Areas/ Strategies

## Education

- Develop video focused on impaired driving survivors/families
- Work to develop a Sober Behind the Wheel license plate
- Establish a youth driver education program
- Participate in a multi-tribe Arrive Alive program

# Emphasis Area/ Strategies

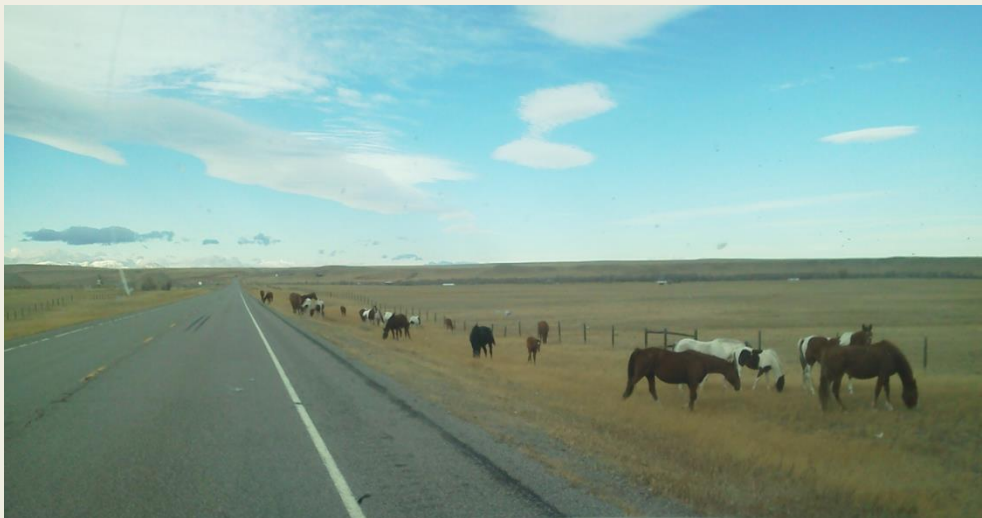
## Enforcement

- Implement an Electronic Crash record System
- Provide a Tribal Highway Safety Officer
- Establish a Social Host & Responsible Server Program
- Increase MHP Law Enforcement Presence
- Develop a cross jurisdictional agreement
- Develop an Enforcement team for livestock removal

# Emphasis Area/ Strategies

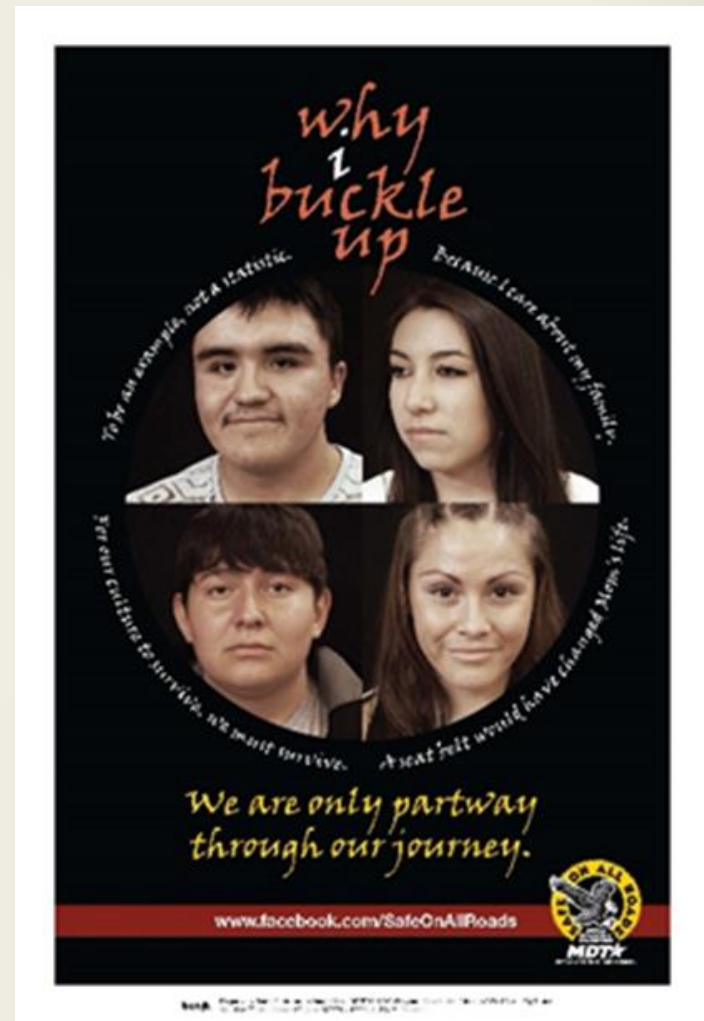
## Engineering

- Continue utilizing RSA on BIA Routes
- Install Livestock Fencing
- Install Mile Markers on BIA Routes



# Plan Evaluation

- Seat belt surveys
- Crash data monitoring





# Questions

- Don White, Blackfeet Transportation Director, 338-7445, [donywhite@yahoo.com](mailto:donywhite@yahoo.com)

