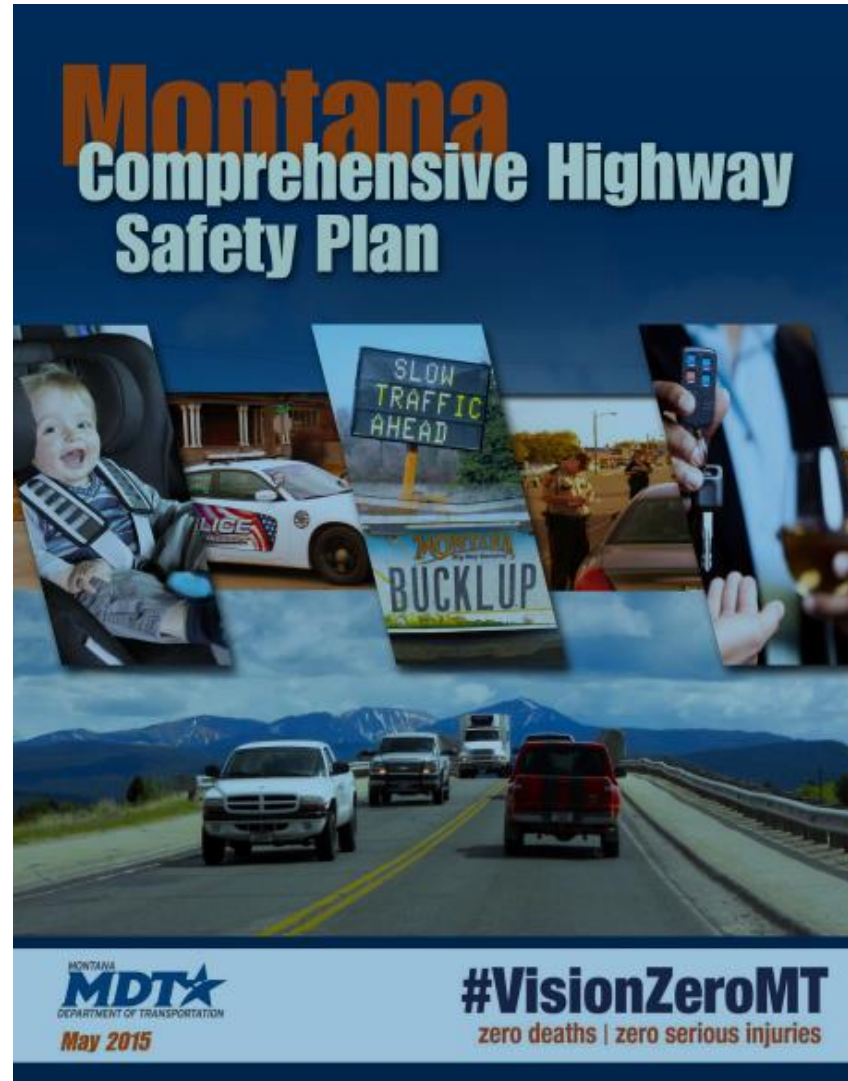


The logo features the text "VisionZeroMT" in a large, bold, white sans-serif font. Below it, the phrase "zero deaths | zero serious injuries" is written in a smaller, white sans-serif font. The text is centered on a dark, textured background that resembles asphalt, with two parallel yellow lines above and below the text, mimicking road lane markings.

VisionZeroMT
zero deaths | zero serious injuries

Impaired Driving Emphasis
Area Team Meeting
September 23, 2015

Montana's Comprehensive Highway Safety Plan (CHSP)



Implementation

Reaching Vision Zero calls for ***strong leadership & active engagement*** of all safety partners at all levels, from agencies, organizations, schools, and community members

Safety Targets

Reduction in:

- Number of Fatalities
- Fatalities rates
- Number of Serious Injuries
- Serious Injury rates

- No more than 172 annual fatalities by 2020, which is an annual reduction of 2.7 percent (5 fewer fatalities per year);
- Fatality rate of no more than 1.28 fatalities per 100 million vehicle miles traveled (VMT) by 2020, a reduction of 4.3 percent per year;
- No more than 796 serious injuries by 2020, a 3.6 percent annual reduction; and
- Serious injury rate of 5.9 serious injuries per 100 million VMT, a reduction of 5.1 percent per year.

Overarching Strategies

- Improve the accuracy, completeness, integration, timeliness, uniformity, and accessibility of data used in traffic safety analysis;
- Support the essential role of EMS in reducing the severity of injury outcomes and the technologies and systems necessary to advance collaboration with all safety partners; and
- Collaborate across agencies, organizations and with the public to improve the safety culture and promote the institutionalization of Vision Zero.

Emphasis Areas

- Roadway Departures and Intersection Crashes
- Impaired Driving Crashes
- Occupant Protection

Impaired Driving Strategies

1

Reduce impaired driving through improved processes and regulations

2

Reduce impaired driving through enforcement

3

Reduce impaired road users through prevention education

4

Continue to support and build collaborative partnerships to reduce impaired driving

1 *Reduce impaired driving through improved processes and regulations*

- Support stronger impaired driving laws that increase penalties and/ or arrest rates
- Support efforts to reduce the over-service of alcohol
- Support efforts to develop local and as statewide social host law
- Support efforts to allow sobriety checkpoints in statute

2

Reduce impaired driving through enforcement

- Sustain Drug Recognition Expert (DRE) and related training, and increase collaboration between DREs and law enforcement agencies
- Support targeted enforcement based on demonstrated crash patterns and/or high-risk rivers (i.e., Selective Traffic Enforcement Program)
- Support local and state law enforcement efforts that include, but are not limited to, High-Visibility Enforcement

2

Reduce impaired driving through enforcement

- Sustain Law Enforcement Liaison program
- Support and encourage law enforcement agencies to enforce the criminal violation of sellers or server of over-service of alcohol, and report violation of alcohol over service to the Department of Revenue (DOR) for administrative action on the liquor license holder
- Identify and support implementation of existing or new alcohol and drug detection technologies

3

Reduce impaired road users through prevention education

- Monitor the impact of marijuana legislation on roadway crashes and countermeasures in peer states
- Develop public education campaign of impaired driving topics
- Research underlying beliefs and behaviors of high-risk groups to better understand them; develop and implement strategies by using the appropriate proven and innovative educational materials and outreach communication channels

4

Continue to support and build collaborative partnerships to reduce impaired driving

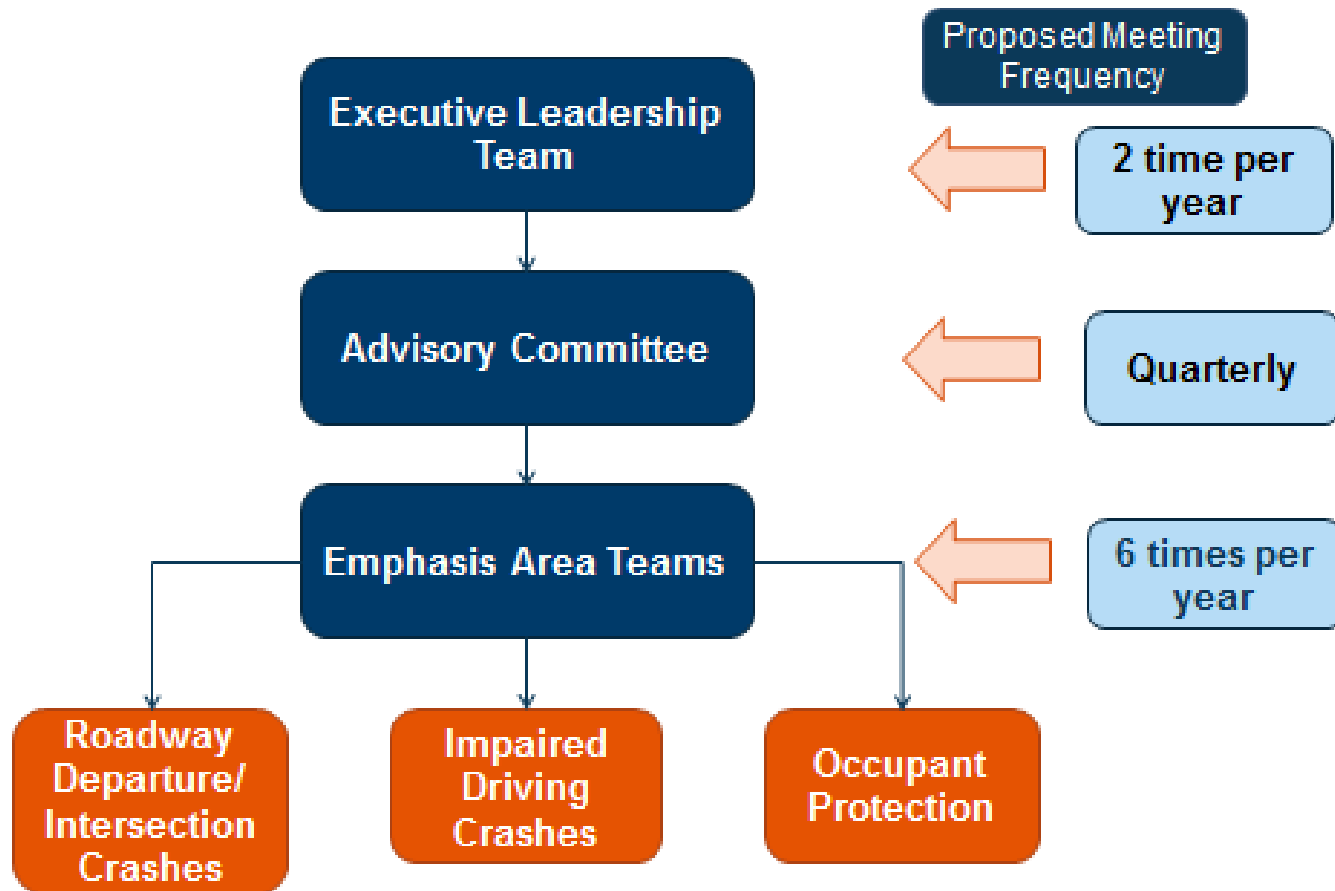
- Support increase of crime lab resources to improve crime lab capacity and speed
- Support increased compliance with mandatory alcohol/drug treatment, and an increase in alcohol and drug abuse treatment options, to prevent repeat DUI offenses
- Support and promote training for criminal justice professionals and medical staff

4

Continue to support and build collaborative partnerships to reduce impaired driving

- Improve MIP processes in Montana
- Increase the number of drug and alcohol courts and provide training to judges and court personnel
- Increase proven effective training for law enforcement, judges and prosecutors to ensure consistent adjudication of all traffic offenses, including impaired driving violations.
- Support development of a statewide DUI Task Force
- Increase usage of the 24/7 DUI monitoring program and other programs to prevent repeat offenses (i.e., ignition interlock)

Implementation Structure



Executive Leadership Team Role and Responsibilities

- Prioritize and institutionalize safety, Vision Zero, across agencies
- Commit revenue, personnel and technical resources to implement statewide safety initiatives
- Identify & remove barriers within and between agencies to achieve Vision Zero
- Incorporate common safety strategies and initiatives into agency plans and policies
- Provide leadership and collaboration addressing statewide safety needs
- Delegate appropriate staff to participate actively in the emphasis areas.

Executive Leadership Team Projected Members

- Governor's Office
- Legislative
- Transportation
- Attorney General
- Montana Highway Patrol
- DPHHS
- Public Instruction
- Revenue
- Corrections
- Court Administration
- County Attorney/Sheriff
- Public Defender
- City of Leagues and Towns (Local PD, City Attorneys, Municipalities)
- Montana Association of County Officials

Advisory Committee Role and Responsibilities

- Discuss implementation progress and coordinate next steps
- Provide guidance and direction to Emphasis Area Teams
- Provide oversight to ensure Emphasis Areas evaluate the effectiveness of strategies ensuring there are contributing to decreases in fatalities and severe injuries.
- Report out as appropriate to Executive Leadership Team.

Advisory Committee Members

- Montana Highway Patrol-Department of Justice
- Records & Licensing- Department of Justice
- EMS & Trauma Systems-DPHHS
- Erin Inman Training, LLC
- Billings Metropolitan Planning Organization
- Missoula Metropolitan Planning Organization
- Missoula Police Department
- Office of Public Instruction
- Confederate Salish & Kootenai Tribes
- Bike Walk Montana
- MDT- Engineering
- MDT- Planning
- MDT- Motor Carriers
- Federal Highway Administration

Impaired Driving Emphasis Area Team Role and Responsibilities

- Commitment time during and outside of scheduled meetings.
- Discuss current emphasis area strategies and specific implementation steps.
- Designate subcommittee with leads.
- Evaluate current efforts, gaps and needs.
- Set realistic priorities for implementation.
- Evaluate current funding and potential funding resources.
- Provide recommendations to Executive Leadership Team.
- With priorities set by the Executive Leadership Team, serve as the NHTSA required Statewide DUI Task Force on Impaired Driving.
- Provide ongoing communication to organization administration.

Impaired Driving Emphasis Area Team Representatives

- Representative(s) from agencies that also represent the Executive Leadership Team.
- More broad to include private and public organizations.
- Other. i.e. crime lab

Next Steps

- MDT will prepare formal presentation material to the Governor's Office.
- Annual Comprehensive Highway Safety
- Possible Executive Order establishing Executive Leadership Team for Comprehensive Highway Safety.
- Impaired Driving Emphasis Team continues to meet.
- First Formal Executive Leadership Team.

Information

Audrey Allums, Bureau Chief
Grants Bureau
Rail, Transit & Planning Division
Montana Department of Transportation
406-444-4210, allums@mt.gov

For information on being involved with Emphasis Areas Teams and the CHSP, please contact:

Pam Langve-Davis, CHSP Coordinator, 406-444-7646, plangvedavis@mt.gov

Comprehensive Highway Safety Plan <http://www.mdt.mt.gov/visionzero/plans/chsp.shtml>

