



Traffic Incident Management (TIM) Update

What's new for 2023

- TIM program is completely hands-on
- 2-Lane training video has been filmed, waiting on voiceover.
- Scene lighting addressed during training
- 2023 FHWA TIM Symposium in Emmitsburg, MD
- Marcee Allen, FHWA-Montana Division, retired

Move Over Law

- Updated to include utility workers and to move highway workers under the same MCA
- Clearer definition of expectations
 - Interstate:
 - Move over and reduce speed to 20 mph below the posted speed limit. If unable to move over, reduce speed by half of the posted speed limit
 - Or follow temporary posted speed limits

Move Over Law continued

- 2-lane road
 - If safe to do so, change lanes and reduce speed by 30 mph below posted speed limit
 - If unable to change lanes, move as far left as safe to do so and reduce speed by $\frac{1}{2}$ the posted speed limit

Move Over Law continued

- Public Education
 - Move Over Montana
 - <https://www.facebook.com/moveovermontana>
 - Grant money for targeted week(s) of law enforcement saturation?
 - Get it into the driver's ed curriculum
 - Have a couple of questions on the written exam
 - Billboards
 - Social media (DOT, MHP, MOMT, others?)

Montana Move Over Law

Effective October 1, 2023

www.facebook.com/moveovermontana

MONTANA'S MOVE OVER LAW REQUIRES

DRIVERS APPROACHING A STATIONARY EMERGENCY, TOWING, OR MAINTENANCE/CONSTRUCTION VEHICLE TO SLOW DOWN TO THE TEMPORARY POSTED SPEED LIMIT. IF NO TEMPORARY SPEED LIMIT IS POSTED THE DRIVER IS REQUIRED TO:

- SLOW BY 20 MPH BELOW THE POSTED SPEED LIMIT ON THE INTERSTATE IF ABLE TO MOVE LANES.
(OR HALF THE POSTED SPEED IF NOT ABLE TO MOVE LANES)
- SLOW BY 30 MPH BELOW THE POSTED SPEED ON A STATE HIGHWAY OR COUNTY ROAD IF ABLE TO MOVE LANES.
(OR HALF THE POSTED SPEED LIMIT IF NOT ABLE TO MOVE LANES)
- BY HALF THE POSTED SPEED LIMIT ON ANY OTHER ROADS.

- ON A MULTI LANE HIGHWAY, DRIVERS ARE REQUIRED TO MOVE TO A LANE NOT ADJACENT TO THE STATIONARY AUTHORIZED VEHICLE.
- OR MOVE OVER AS FAR AS SAFELY POSSIBLE UNDER THE CIRCUMSTANCES.



WHEN A DRIVER FAILS TO FOLLOW THE LAW, THEY COMMIT RECKLESS ENDANGERMENT OF PERSONNEL



HIGHWAY/UTILITY

FIRE

EMS

POLICE

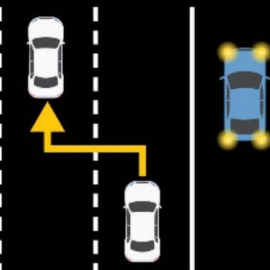
TOWING

WHAT TO DO when you see a stationary vehicle with flashing lights

1
SLOW DOWN



2
CHANGE LANES SAFELY



« SLOW DOWN MOVE OVER »
GIVE THEM ROOM



MAXIMUM FINES AND PENALTIES:



IMPRISONMENT
FOR
1 YEAR



**IT'S NOT A COURTESY
IT'S THE LAW**

www.facebook.com/moveovermontana

Montana TIM Steering Committee

- Meets quarterly via TEAMS
- We need more representation from all disciplines
- Current members please stand
- In addition, we are looking for more trainers across the state

Crash Responder Safety Week

- November 13th – 17th, 2023
- Governor's proclamation
 - Would like to have all disciplines there for the signing and make sure it's covered by media (TV & print)
- Social media posts each day

YTD National Responder Fatalities

As of October 11, 2023

- Tow Operators 13
- LEO 8
- Fire/EMS 6
- DOT/SSP 2
- Total 29



25th Anniversary of the Emergency Responder Safety Institute

25 years ago, two LODDs changed roadway incident response forever.

[Read More](#)



Training

To teach responder safety and traffic incident management to all disciplines.

[Online @ RSLN](#) | [Videos](#) | [Lesson Plans](#) | [Resources](#)



Information Sharing

Across disciplines, promote conversation, disseminate news, and break new ground.

[Reports](#) | [News](#) | [Practices](#) | [Public Education](#)



Data Gathering

To track emergency responder struck by incidents on the roadway so we can prevent future tragedies.

[Struck By](#) | [Near Miss](#) | [LODD Reports](#) | [LODD Map](#)

Questions?

Jerry Prete

406-461-2274

gerald.prete@montana.edu